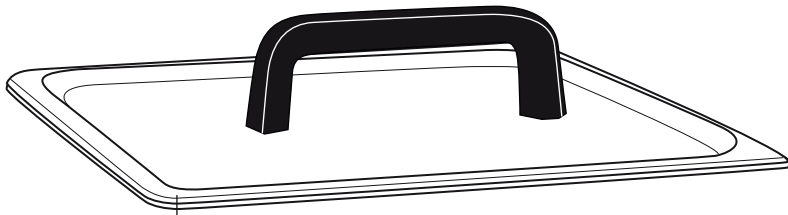
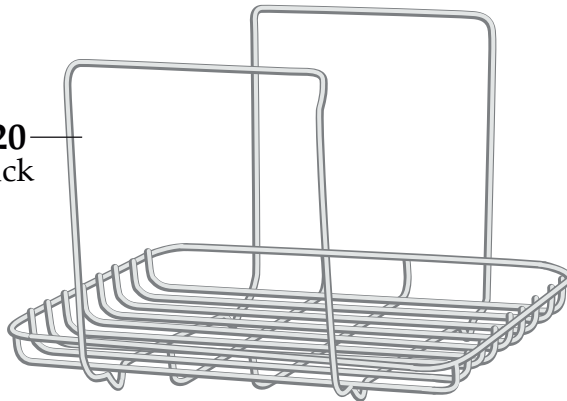




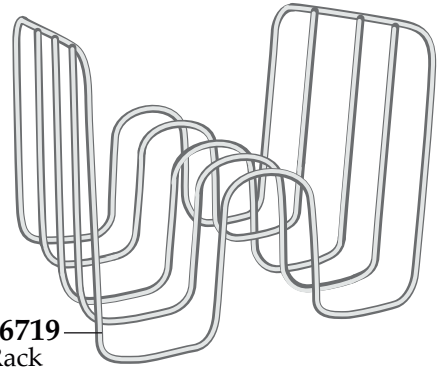
# Europe 16 Liter Thermal Circulator Intergrated Bath System WSV16E



036718  
Cover



036720  
Lift Rack



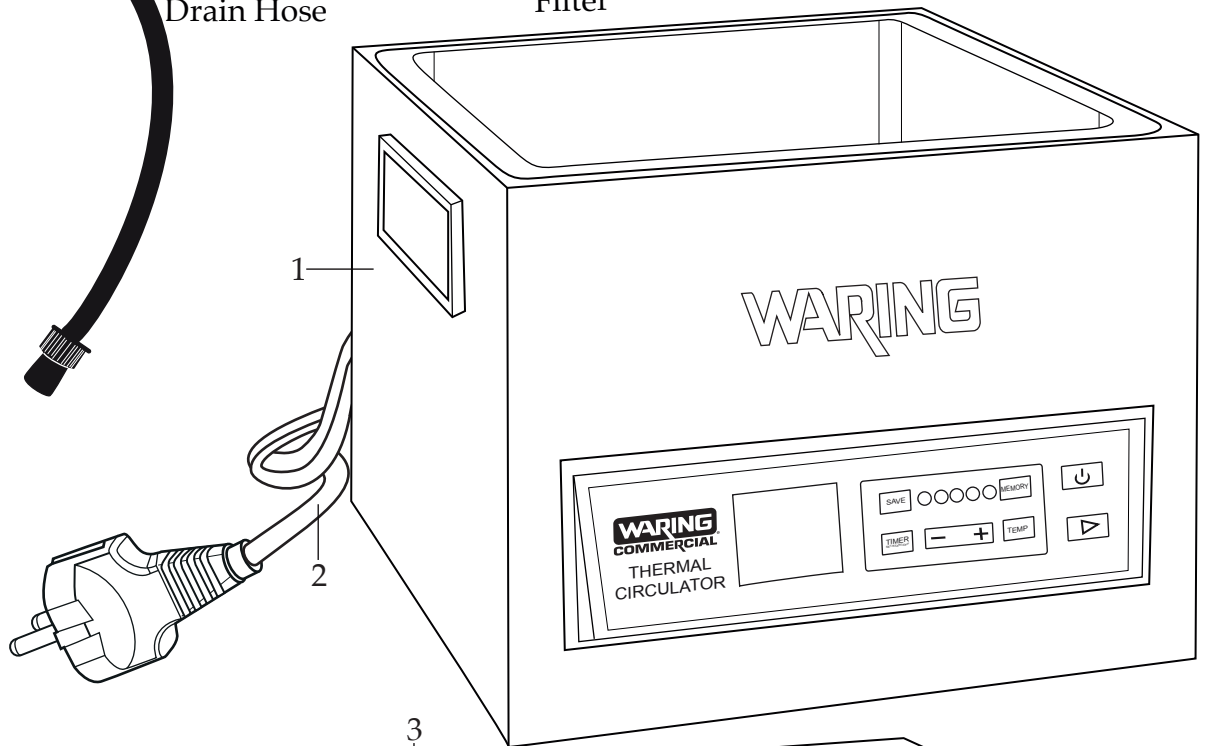
036719  
Rack



036721  
Drain Hose



038259  
Filter



1

2

3



Date Code Location  
WWYY  
(week week year year)

4

5

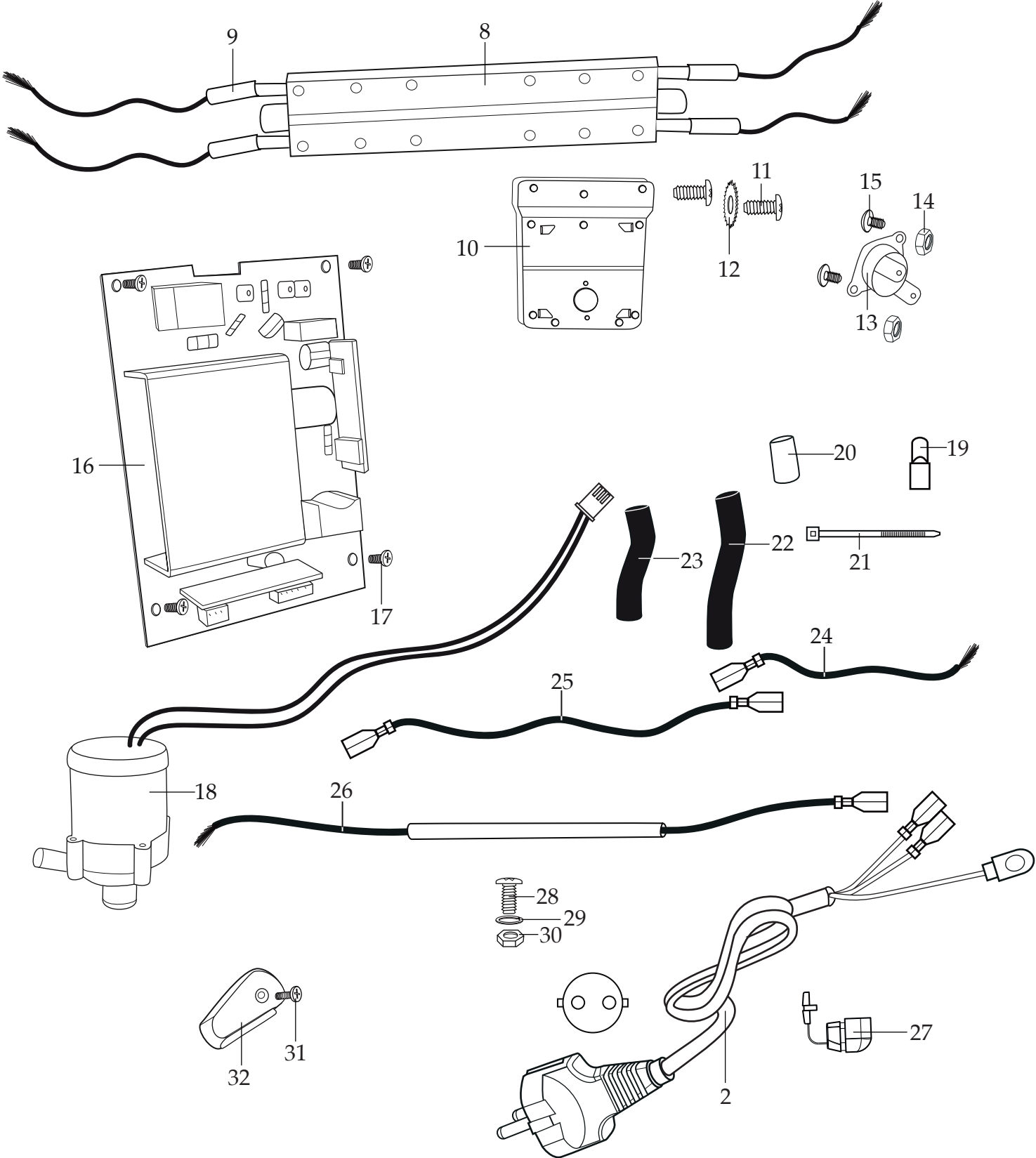
6

7

# WARING COMMERCIAL

Base Unit Components

## WSV16E



# Catalog/Model

WSV16E



| <b>Illustration#</b> | <b>Part#</b> | <b>Description</b>                    |
|----------------------|--------------|---------------------------------------|
| 1                    | 038135       | WSV16E Base Unit                      |
| 2                    | 038136       | Cord Set                              |
| 3                    | 038150       | Bottom Plate                          |
| 4                    | 035780       | Foot (4 required)                     |
| 5                    | 035779       | Foot Screw (4 required)               |
| 6                    | 035779       | Screw (18 required)                   |
| 7                    | 035785       | Screw                                 |
| 8                    | 038137       | Heater Assembly                       |
| 9                    | 038143       | Fiber Sleeve (8 required)             |
| 10                   | 038149       | Thermostat Bracket                    |
| 11                   | 035779       | Screw (2 required)                    |
| 12                   | 037158       | Lock Washer (2 required)              |
| 13                   | 038144       | Thermostat                            |
| 14                   | 037154       | Hex Nut (2 required)                  |
| 15                   | 038148       | Screw (2 required)                    |
| 16                   | 038141       | PCB Board                             |
| 17                   | 035790       | Screw (4 required)                    |
| 18                   | 038142       | Pump                                  |
| 19                   | 019123       | Large Crimp Connector (2 required)    |
| 20                   | 038140       | Clear Sleeve (2 required)             |
| 21                   | 013731       | Wire Tie (9 required)                 |
| 22                   | 038138       | 2.375" Black Hose                     |
| 23                   | 038139       | 1.5" Black Hose                       |
| 24                   | 038146       | 4.5" Yellow Lead                      |
| 25                   | 038145       | 9" Red Lead                           |
| 26                   | 038147       | Blue-Yellow Lead Assembly with Sleeve |
| 27                   | 035806       | Strain Relief                         |
| 28                   | 035800       | Screw                                 |
| 29                   | 032751       | Spring Washer                         |
| 30                   | 035802       | Hex Nut                               |
| 31                   | 038232       | Screw                                 |
| 32                   | 038231       | Drain Lever                           |