

Atosa WTY130L Classic Curved Refrigerated Countertop with Rear Sliding Door Access



The Atosa WTY130L offers a fantastic option to showcase your products in a refrigerated display. With sliding door easy access, it offers a great opportunity to present your goods in an aesthetically pleasing manner.

- ✓ Stainless Steel Interior and Exterior Structure
- ✓ Ventilated Cooling
- ✓ LED Interior Lighting
- ✓ Double Safety Glass at the Front
- ✓ Automatic Defrost
- ✓ Digital Thermostat
- ✓ Adjustable Feet
- ✓ Sliding Glass Rear Door
- ✓ Single Safety Glass at the Rear
- ✓ Stainless Steel Shelves

SPECIFICATIONS

Summary

Brand	Atosa	Annual Consumption	1577
Model	WTY130L	Voltage (V/HZ/PH)	220-240/50/1
Shelves (Excluding Base)	2	Power (W)	242

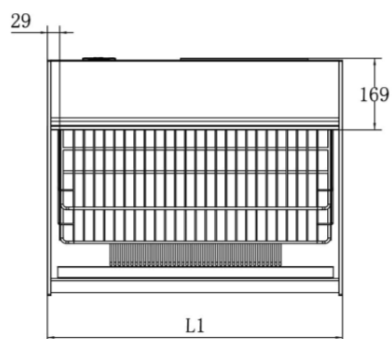
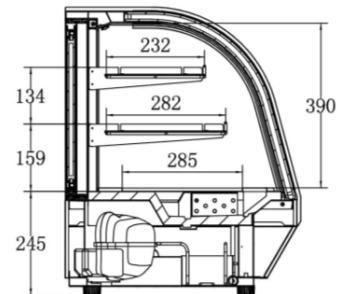
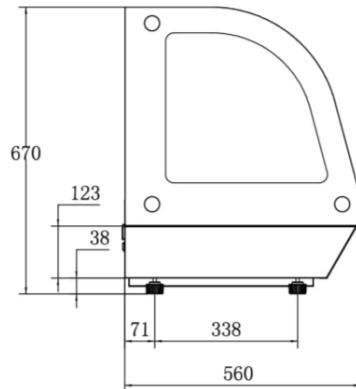
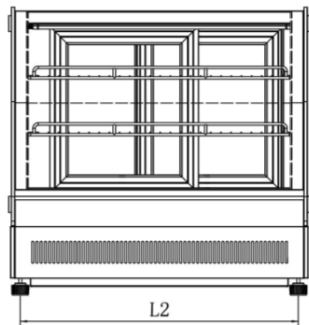
Power and Performance

Key Specifications

Gross Capacity (Litre)	130
Gas Refrigerant	R290
Climate Class	3
Energy Efficiency Class	C
Refrigerant Type	Ventilated
Temperature (°C)	+2° to +8°
Cooling Method	Air Defrost
Thermostat	Dixell / Carel
Compressor	Embraco

Weights and Dimensions

Exterior Dimension (WxDxH) mm	900 x 560 x 670
Packing Dimension (WxDxH) mm	784 x 641 x 790
Shelf Dimensions (mm)	650 x 288, 650 x 238
Insulation Thickness (mm)	20
Maximum Load Per Shelf (kg)	7
Net Weight (kg)	70
Gross Weight (kg)	91



4				
3				
2	WTY130L	900	850	
1	WTY110L	700	650	
		L1 (mm)	L2 (mm)	

ATO SA[®]
LEADING MANUFACTURING COMPANY