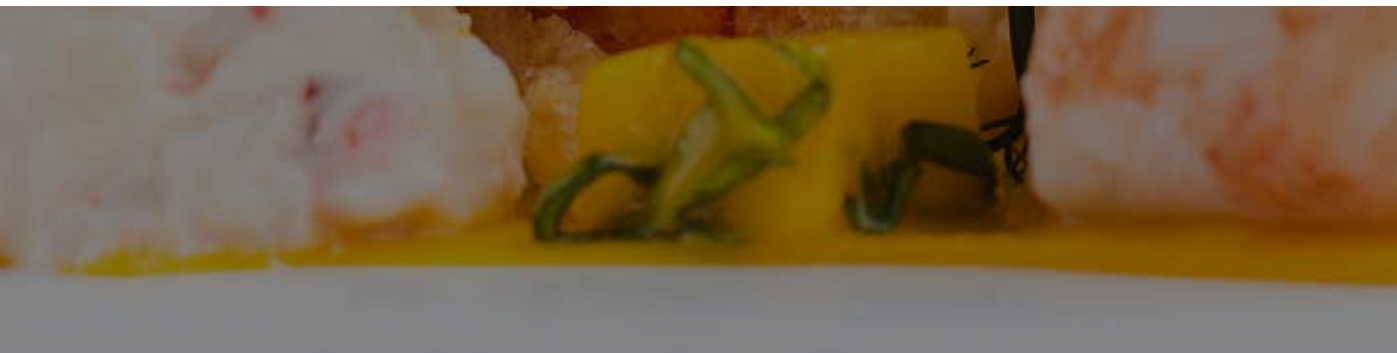


SOUSVIDETOOLS

FRESCO 300 VACUUM PACKING MACHINE



SVT-FRESCO300 PRODUCT SPECIFICATION



FRESCO 300 VACUUM PACKING MACHINE

SVT-FRESCO300



STANDARD SPECIFICATION

300mm sealing bar with 8m³/h SousVideTools Vacuum Pump providing high pressure and fast vacuum speed.

POWER SUPPLY

UK 3 pin plug or Schuko plug for Europe

WARRANTY

2 year warranty

The SousVideTools Fresco 300 is compact, easy to use and reliable. This vacuum packing machine provide the ideal solution for businesses that require an incredibly hygienic and cost-effective solution for, consistent, simple vacuum packing.

The SousVideTools Fresco 300 features a 8m³/h SousVideTools Vacuum Pump & a 300mm Sealing Bar. Full vacuum takes 20-35 seconds. The maximum bag size is 300mm x 400mm. It features an easy-to-use digital control panel & easy-to-read pressure indicator. It includes a free servicing pack & features a 2 year warranty.

The Fresco 300 is made entirely of a stainless steel construction, including the internal structure, vacuum chamber and bodywork, thus guaranteeing robust and reliable machines. They feature simple to use controls and a 8m³/h SousVideTools Vacuum Pump as standard, so it remains consistently powerful in operation.

The Fresco has been designed to reduce the work surface space required meaning that it can be used anywhere. With this vacuum packing machine hygiene was a key priorities so the machine was designed with rounded corners so no food debris can get stuck and a sealing bar that is simple to remove. When using this machine for sous vide cooking the double seam closure not only seals the pouch but prevents contamination of the water bath. This machine is a cost effective vacuum packaging solution.

FRESCO 300 VACUUM PACKING MACHINE

SVT-FRESCO300



KEY FEATURES

- + Sealing bar length of 300mm
- + SousVideTools vacuum pump 8m3/hr suction
- + Timer controlled vacuum
- + Machine cycle: 20-35 sec
- + Vacuum "quick-stop" as the push of a button
- + User friendly and low maintenance
- + AISI 304 stainless steel housing
- + Simple to use electronic control system
- + Convex lid for extra height
- + Easily removable sealing bar for cleaning
- + Extremely easy to clean
- + Deep chamber with round corners
- + Full CE approval
- + External Dimensions: 360(h) x 330(w) x 480(d)mm
- + Internal Dimensions: 130(h) x 300(w) x 350(d)mm



PRODUCT SPECIFICATION

| | |
|-------------|-----------------|
| MODEL | SVT-FRESCO300 |
| HxWxD (mm) | 360 x 330 x 480 |
| SEAL LENGTH | 300mm |

2 YEAR WARRANTY



sousvide tools.com

HEADQUARTERS

Central Barn, Claughton Business Park,
Hornby Road, Claughton, Lancaster, LA2 9JX

0800 678 5001

01524 770 060

enquiries@sousvidetools.com

www.sousvidetools.com