

Datasheets

UltraVent Plus - Type 6-1/1, 10-1/1



Article number

60.75.142

Description

It is also equipped with special filter technology which reduces lingering smoke, which can build up while grilling and frying.

The UltraVent Plus gets rid of the steam emitted with its condensation technology. No connection to the outside or extension of an existing exhaust system is necessary with this air recirculation hood. Installation is simple, and the hood can be retrofitted at any time.



Intended use

This product is only intended for commercial use, such as in restaurant kitchens or catering operations for schools, hospitals, or delis. Any other use runs counter to its intended purpose, and could be dangerous. Any other use runs counter to its intended purpose, and could be dangerous.

Features

- Special filter technology with a replaceable HEPA H13 main filter to reduce smoke
- Intelligent power control with automatic, continuously variable adjustment of the extraction power to the quantity of steam emitted
- Automatically boosts extraction rate when cooking cabinet door is opened
- Reduces lingering steam and vapours. These are extracted and condensed in the hood.
- Wastewater discharged by the device - no additional discharge line needed
- Easy to install and retrofit
- Issue of service notifications on the display
- Easy to clean baffle plate, dishwasher safe

Technical specifications

Connection:	200-240 V - 1 NAC
Frequency:	50/60 Hz
Connected load:	140-160 W
Current consumption (A):	0,7 A
Extraction capacity:	705 m ³ /h
Operating noise level:	50-65 dB(A)

Dimensions and weights

Width (W):	854 mm
Height (H):	403 mm
Depth (D):	886 mm
Weight:	63 kg

Material

Rust-free stainless steel (CNS 1.4301/AISI 304)

Datasheets

UltraVent Plus - Type 6-1/1, 10-1/1



Note

- To install an UltraVent, UltraVent Plus or exhaust hood on a SelfCookingCenter (from 04/2004) or CombiMaster Plus, a corresponding adapter kit is required
- The condensation effect of the UltraVent condensation hood can significantly reduce the amount of supply and exhaust air required for iCombi appliances. Specific information can be found in the RATIONAL planner's manual. Local standards and regulations for ventilation and air conditioning systems must be observed.
- Only permitted for installation on electrical units
- We recommend maintaining an overhead clearance of at least 450 mm for all cooking systems and Combi-Duos using an UltraVent or an UltraVent Plus
- In individual cases involving Model 10-1/1 or smaller tabletop cooking systems, this clearance can be reduced to a minimum of 250 mm following expert evaluation of local framework conditions
- Not to be used with VarioSmoker
- For iCombi Pro and iCombi Classic models 6-1/1 and 6-2/1, we recommend the installation on a raised stand II or III UltraVent version

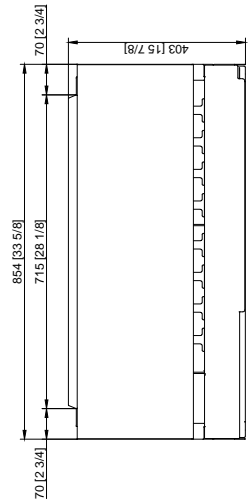
Approvals



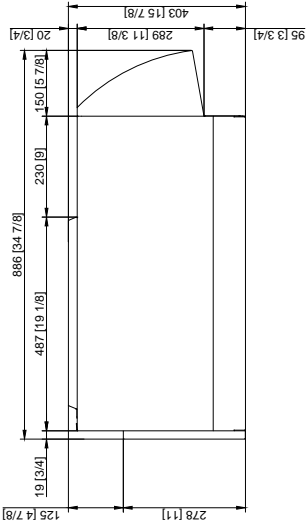
Datasheets
UltraVent Plus - Type 6-1/1, 10-1/1



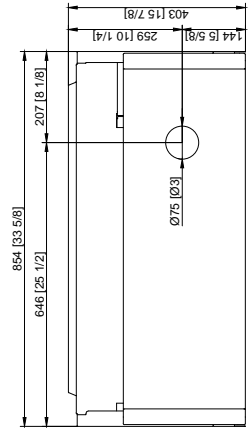
Vorderansicht
Front view
Vue de face



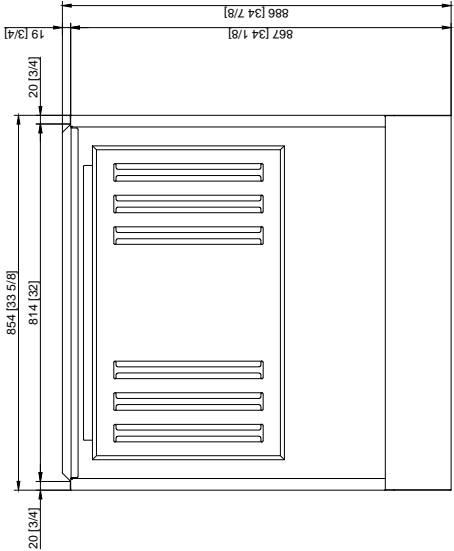
Seitenansicht
Side view
Vue de côté



Rückansicht
Back view
Vue arrière



Draufsicht
Top view
Vue de dessus



Information/Information/Information		Anschlussplan/Connection diagram/Plan de connexion	
Zeichnungsdruck unterliegt nicht dem Änderungsdienst!		UltraVent Plus (CP-CC 6-11 and 10-11)	
Printed drawing is not automatically updated!		(master view)	
La mise à jour n'est pas assurée sur les plans papier!			
RATIONAL AG 2019		30.09.2019	
Revision/Reviser/Revision		RATIONAL AG 2019	
Index		1: 1	
Name/Name/Name		Abmessungen/Dimensions/Dimensions (mm/inch)	
1		Nr./No./Beschreibung/Description	
2		1	
3		2	
4		3	
5		4	
6		5	
7		6	
8		7	