



KitchenAid

Electric Kettle 5KEK1222

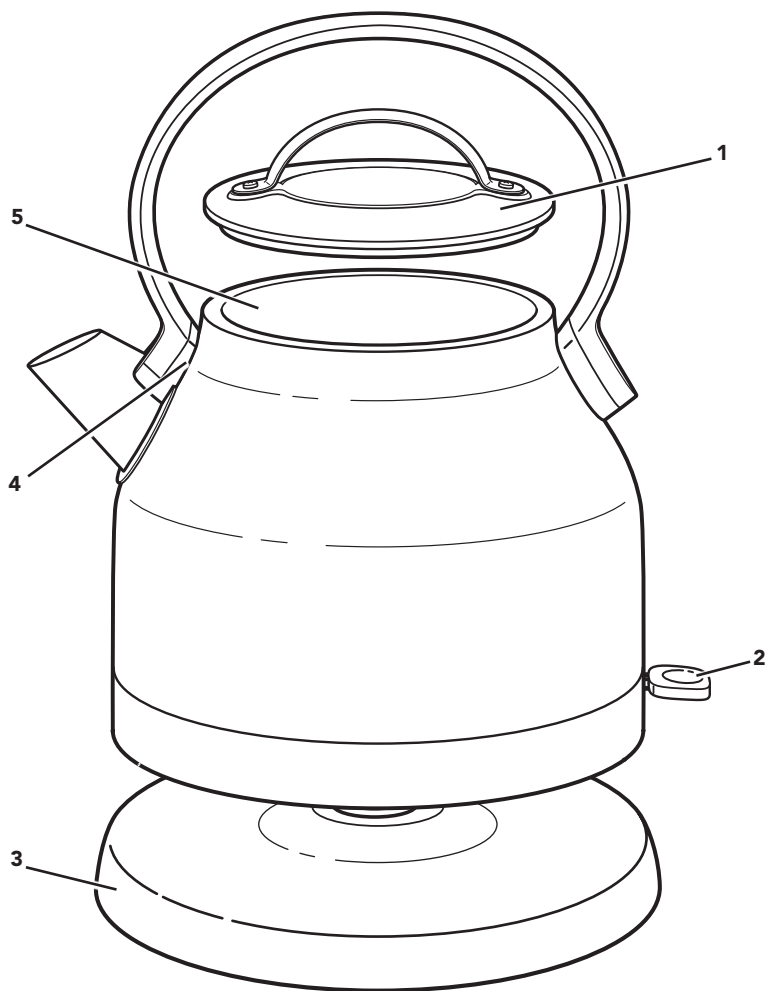


EN	Use and Care manual	2	NO	Håndbok for bruk og vedlikehold	95
DE	Gebrauchs- und Pflegeanleitung	13	FI	Käyttö- ja huolto-opas	105
FR	Manuel d'utilisation et d'entretien	23	DA	Vejledning til anvendelse og vedligehold	115
IT	Manuale d'uso e manutenzione	35	IS	Notenda & Meðhöndlunar handbók	125
NL	Gebruiks- en onderhoudshandleiding	45	RU	Руководство по эксплуатации и уходу	135
ES	Manual de uso y cuidado	55	PL	Instrukcja obsługi i konserwacji	145
PT	Manual de utilização e manutenção	65	CS	Návod k použití a údržbě	155
EL	Εγχειρίδιο Χρήσης και Φροντίδας	75	TR	Kullanım ve Bakım kılavuzu	165
SV	Handbok för skötsel och användning	85	AR	دليل الاستخدام والعناية	1





PARTS AND FEATURES



- | | | | |
|---|----------------------------------|---|---------------------|
| 1 | Lid | 4 | Filter (not shown) |
| 2 | ON/OFF Switch with LED Indicator | 5 | Water Fill Location |
| 3 | Base with Power Cord | | |





PRODUCT SAFETY

Your safety and the safety of others are very important.

We have provided many important safety messages in this manual and on your appliance. Always read and obey all safety messages.



This is the safety alert symbol.

This symbol alerts you to potential hazards that can kill or hurt you and others.

All safety messages will follow the safety alert symbol and either the word “DANGER” or “WARNING.” These words mean:

! DANGER

You can be killed or seriously injured if you don't immediately follow instructions.

! WARNING

You can be killed or seriously injured if you don't follow instructions.

All safety messages will tell you what the potential hazard is, tell you how to reduce the chance of injury, and tell you what can happen if the instructions are not followed.

IMPORTANT SAFEGUARDS

When using electrical appliances, basic safety precautions should always be followed, including the following:

1. Read all instructions. Misuse of appliance may result in personal injury.
2. Do not touch hot surfaces. Use handles or knobs.
3. To protect against fire, electric shock and injury to persons do not immerse cord, plugs or appliance in water or other liquid. Avoid spillage on the connector.
4. Close supervision is necessary when any appliance is used by or near children.
5. European Union Only: This appliance can be used by children aged from 8 years and above if they have been given supervision or instruction concerning use of the appliance in a safe way and if they understand the hazards involved. Cleaning and user maintenance shall not be made by children unless they are older than 8 years and supervised. Keep the appliance and its cord out of reach of children aged less than 8 years.
6. European Union Only: Appliances can be used by persons with reduced physical, sensory or mental capabilities or lack of experience and knowledge if they have been given supervision or instruction concerning use of the appliance in a safe way and understands the hazards involved.
7. This appliance is not intended for use by persons (including children) with reduced physical, sensory or mental capabilities, or lack of experience and knowledge, unless they have been given supervision or instruction concerning use of the appliance by a person responsible for their safety.
8. Children should be supervised to ensure that they do not play with the appliance. Children shall not play with the appliance.
9. Unplug the appliance from outlet when not in use and before cleaning. Allow to cool before putting on or taking off parts, and before cleaning the appliance.



PRODUCT SAFETY

10. Do not operate any appliance with a damaged cord or plug or after the appliance malfunctions, or is dropped or damaged in any manner. Contact the manufacturer at their customer service telephone number for information on examination, repair, or adjustment.
11. The use of accessory attachments not recommended by the appliance manufacturer may result in fire, electric shock or injury to persons.
12. Do not use the appliance outdoors.
13. Do not let the cord hang over the edge of table or counter, or touch hot surfaces.
14. Do not place on or near a hot gas or electric burner, or in a heated oven.
15. The Electric Kettle should only be used to heat water.
16. Do not use the Electric Kettle without Lid properly closed.
17. Do not use the Electric Kettle with loose or weakened handle.
18. Do not use the appliance for other than intended use.
19. If the supply cord is damaged, it must be replaced by the manufacturer, it's authorized service agent or similarly qualified persons in order to avoid a hazard.
20. The heating element surface is subject to residual heat after use. Do not touch hot surface. Use handles.
21. Do not clean the Electric Kettle with abrasive cleaners, steel wool or other abrasive materials.
22. Do not overfill kettle. If the kettle is overfilled, boiling water may be ejected.
23. CAUTION: Do not operate the kettle on an inclined plane. Do not operate the kettle unless the element is fully immersed. Do not move while the kettle is switched on.
24. Scalding may occur if the Lid is removed during the brewing cycle.
25. To disconnect, turn any control to "OFF", then remove plug from wall outlet.
26. Refer to the "Care and Cleaning" section for instructions on cleaning the surfaces in contact with food.
27. This appliance is intended to be used in household and similar applications such as:
 - staff kitchen areas in shops, offices or other working environments;
 - farmhouses;
 - by clients in hotels, motels and other residential type environments;
 - bed and breakfast type environments.
28. This product is designed for household use only. Not designed for commercial use.


SAVE THESE INSTRUCTIONS





PRODUCT SAFETY

ELECTRICAL REQUIREMENTS

**WARNING**



Electrical Shock Hazard

Plug into an earthed outlet.

Do not remove earth prong.

Do not use an adapter.

Do not use an extension cord.

Failure to follow these instructions can result in death, fire, or electrical shock.

Voltage: 220-240 V

Frequency: 50-60 Hz


Wattage: 1850 W for model 5KEK1222E
(Kettle with European plug)
2200 W for model 5KEK1222B
(Kettle with British plug)

NOTE: The Electric Kettle has an earthed plug. To reduce the risk of electrical shock, this plug will fit in an outlet only one way. If the plug does not fit in the outlet, contact a qualified electrician. Do not modify the plug in any way.

Do not use an extension cord. If the power supply cord is too short, have a qualified electrician or service technician install an outlet near the appliance.

ELECTRICAL EQUIPMENT WASTE DISPOSAL

Disposal of packing material


The packing material is recyclable and is marked with the recycle symbol . The various parts of the packing must therefore be disposed of responsibly and in full compliance with local authority regulations governing waste disposal.

Scrapping the product

- This appliance is marked in compliance with European Directive 2012/19/EU, Waste Electrical and Electronic Equipment (WEEE).

- By ensuring this product is disposed of correctly, you will help prevent potential negative consequences for the environment and human health, which could otherwise be caused by inappropriate waste handling of this product.



- The symbol  on the product or on the accompanying documentation indicates that it should not be treated as domestic waste but must be taken to an appropriate collection centre for the recycling of electrical and electronic equipment.

Disposal must be carried out in accordance with local environmental regulations for waste disposal.

For more detailed information about treatment, recovery and recycling of this product, please contact your local city office, your household waste disposal service or the shop where you purchased the product.

DECLARATION OF CONFORMITY

This appliance has been designed, constructed and distributed in compliance with the safety requirements of EC Directives: 2014/35/EU, 2014/30/EU, 2009/125/EC and 2011/65/EU (RoHS Directive).



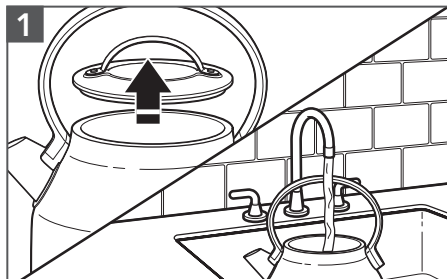


PRODUCT OPERATION

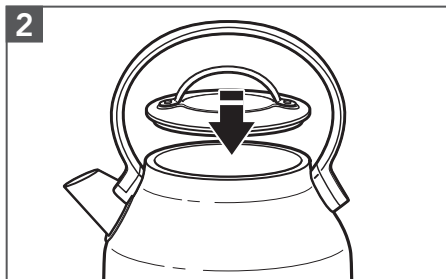
Before first use, fill the Electric Kettle to the maximum level, then boil and discard the water.

NOTE: The Electric Kettle is designed for water only. Do not put any other liquids or substances in the Electric Kettle.

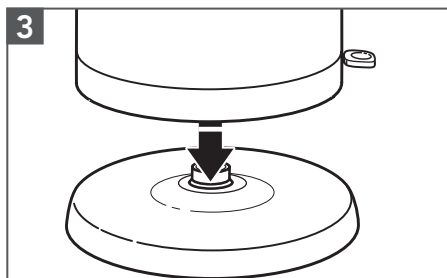
HEATING WATER



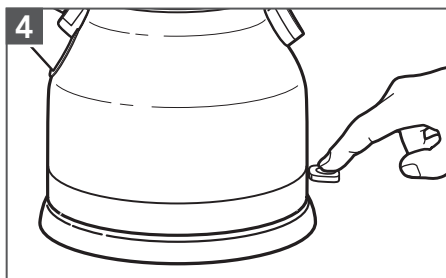
Remove the Lid from the kettle. Fill the Electric Kettle with water.



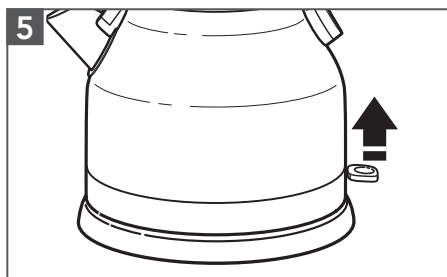
Replace the Lid.



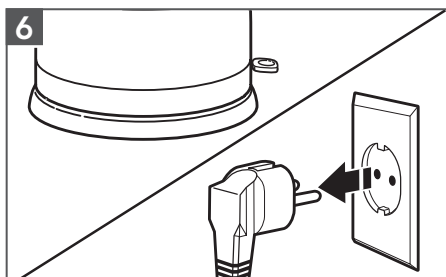
Place the Electric Kettle on the Base.



Turn the Electric Kettle ON by pressing the ON/OFF switch down. The LED indicator will light. Kettle will automatically turn OFF when water has finished boiling.



You may also turn it OFF by raising the switch to the OFF position.



Unplug cord when Electric Kettle is not in use.

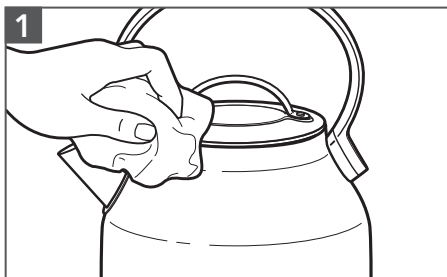




CARE AND CLEANING

CLEANING THE EXTERIOR

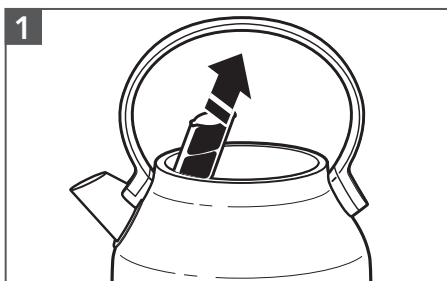
IMPORTANT: Before cleaning always disconnect the Electric Kettle from electrical outlet. Make sure the Electric Kettle has cooled completely.



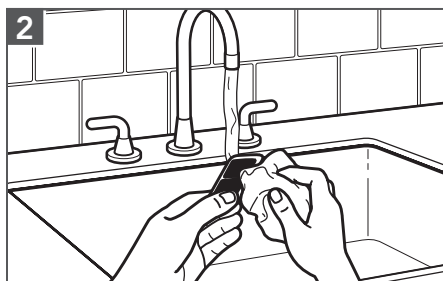
The exterior of the Electric Kettle may be cleaned with a damp cloth. Dry and polish the Electric Kettle with a soft cloth. Abrasives and scouring agents of any kind are not recommended.

CLEANING THE FILTER

The Electric Kettle features a removable mesh filter that traps scale deposits for cleaner water. The filter will need to be cleaned periodically-more often if you have hard water.



To access Filter: Open the Lid; the Filter is located behind spout inside Electric Kettle. Grasp the top of the Filter to remove.



Clean under hot water with a soft brush or cloth to remove deposits, and replace Filter by sliding the Filter into the slot behind the spout.

NOTE: If calcium deposits remain on the Filter, let it stand overnight in a solution of water and white vinegar. Rinse the Filter thoroughly and replace in the Electric Kettle.

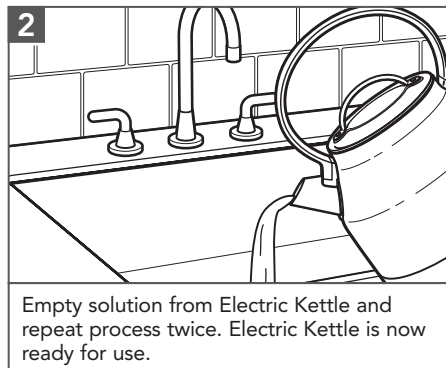
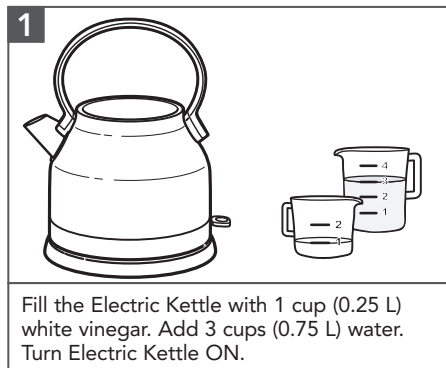




CARE AND CLEANING

REMOVING MINERAL DEPOSITS FROM THE INTERIOR

To get the best performance from your Electric Kettle, decalcification will be necessary. Calcium deposits may form on the interior metal parts of the Electric Kettle. The cleaning interval will depend on the hardness of the water you put in the Electric Kettle.





TERMS OF KITCHENAID GUARANTEE ("GUARANTEE")

Covering U.K. - Ireland - South Africa - UAE

KitchenAid Europa, Inc., Nijverheidslaan 3, Box 5, 1853 Strombeek-Bever, Belgium ("Guarantor") grants the end-customer, who is a consumer, a Guarantee pursuant to the following terms.

FOR U.K.:

The Guarantee applies in addition to and does not limit or affect the statutory warranty rights of the end-customer against the seller of the product. In summary, the Consumer Rights Act 2015 says products must be as described, fit for purpose and of satisfactory quality. During the expected lifespan of your product your legal rights entitle you to the following:

- Up to 30 days: if your product is faulty, then you can get an immediate refund.
- Up to six months: if your product can't be repaired or replaced, then you're entitled to a full refund, in most cases.
- Up to six years: if your product does not last a reasonable length of time you may be entitled to some money back.

These rights are subject to certain exceptions. For detailed information please visit the Citizens Advice website www.adviceguide.org.uk or call 03454 04 05 06.

FOR IRELAND:

The Guarantee applies in addition to and does not limit or affect the statutory warranty rights of the end-customer against the seller of the product under the European Communities (Certain Aspects of the Sale of Consumer Goods and Associated Guarantees Regulations 2003 (S.I. No. 11/2003)) and other enactments governing the sale of consumer goods.

FOR SOUTH AFRICA:

The Guarantee applies in addition to and does not limit or affect the statutory warranty rights of the end-customer against the seller of the product. In summary, the Consumer Protection Act, 2008 says that products must be: (i) reasonably suitable for the purpose for which they are intended; (ii) in good working order, of good quality and free of any defects; (iii) useable and durable for a reasonable period of time, having regard to the use to which they would normally be put and to all the surrounding circumstances; and (iv) in compliance with any applicable standards or any other public regulations.

During the expected lifespan of your product and where the products are not purchased online, your legal rights will entitle you to the following:

- You will be entitled to a full refund, if you did not have the opportunity to examine the product before delivery and if you rejected delivery of the product on the basis that the type and quality of the product was not as reasonably expected or did not reasonably conform to the material specifications.
- Within 5 business days after delivery: you may rescind your purchase and request a refund, if your purchase resulted from direct marketing.
- Within 10 business days after delivery: you will be entitled to a full refund, if it is found that the product was unsuitable for a particular purpose specifically communicated to you by the Guarantor.
- Within 15 business days after delivery: you will be entitled to a refund if: (i) the product was not delivered to you; or (ii) if you returned the product to the Guarantor.
- Within 6 months after delivery: you will be entitled to a refund or a replacement product, if the product is defective or fails to operate in terms of its specifications.





TERMS OF KITCHENAID GUARANTEE ("GUARANTEE")

Where you have purchased a product online your legal rights will be governed by the Electronic Communications and Transactions Act, 2002 and you will be entitled to the following:

- Within 7 days after conclusion of the transaction or after delivery: you may cancel your purchase without reason and without penalty.
- Within 30 days of the date of cancellation of the transaction: you will be entitled to receive a refund, if you have already made payment.
- You will only be liable for the direct costs of returning the product to the Guarantor.

FOR UAE:

The Guarantee applies in addition to and does not limit or affect the statutory warranty rights of the end-customer against the seller of the product.

1) SCOPE AND TERMS OF THE GUARANTEE

a) The Guarantor grants the Guarantee for the products mentioned under Section 1.b) which a consumer has purchased from a seller or a company of the KitchenAid-Group within the following countries: U.K., Ireland, or South Africa, or the United Arab Emirates (UAE).

b) The Guarantee period depends on the purchased product and is as follows:

5KEK1222 Two years full guarantee from date of purchase.

c) The Guarantee period commences on the date of purchase, i.e. the date on which a consumer purchased the product from a dealer or a company of the KitchenAid-Group.

d) The Guarantee covers the defect-free nature of the product.

e) The Guarantor shall provide the consumer with the following services under this Guarantee, at the choice of the Guarantor, if a defect occurs during the Guarantee period:

- Repair of the defective product or product part, or
- Replacement of the defective product or product part. If a product is no longer available, the Guarantor is entitled to exchange the product for a product of equal or higher value.

f) If the consumer wishes to make a claim under the Guarantee, the consumer has to contact the country specific KitchenAid service centres or the Guarantor directly at KitchenAid Europa, Inc. Nijverheidslaan 3, Box 5, 1853 Strombeek-Bever, Belgium;

Email-Address U.K.: CONSUMERCARE.UK@kitchenaid.eu

Email-Address IRELAND: CONSUMERCARE.IE@kitchenaid.eu

Toll Free Number U.K. & IRELAND: **00 800 381 040 26**

FOR SOUTH-AFRICA:

Our local KitchenAid Distributor:

KitchenAid Africa
PO Box 52102
V&A Waterfront
Cape Town
8002





TERMS OF KITCHENAID GUARANTEE ("GUARANTEE")

Contact our distributor:

Telephone: +27 21 555 0700

You can contact our Customer Service Centre for Small Domestic Appliances from 8.30 am to 1.00pm and from 1.30 pm to 5.00 pm or write to us at the following address: hello@kitchenaidafrica.com

FOR UAE:

AL GHANDI ELECTRONICS.

POST BOX NO. 9098,

DUBAI, UNITED ARAB EMIRATES

Toll free number: +971 4 2570007

g) The costs of repair, including spare parts, and any postage costs (if applicable) for the delivery of a defect-free product or product part shall be borne by the Guarantor. The Guarantor shall also bear the postage costs for returning the defective product or product part if the Guarantor or the country specific KitchenAid customer service centre requested the return of the defective product or product part. However, the consumer shall bear the costs of appropriate packaging for the return of the defective product or product part.

h) To be able to make a claim under the Guarantee, the consumer must present the receipt or invoice of the purchase of the product.

2) LIMITATIONS OF THE GUARANTEE

a) The Guarantee applies only to products used for private purposes and not for professional or commercial purposes.

b) The Guarantee does not apply in the case of normal wear and tear, improper or abusive use, failure to follow the instructions for use, use of the product at the wrong electrical voltage, installation and operation in violation of the applicable electrical regulations, and use of force (e.g. blows).

c) The Guarantee does not apply if the product has been modified or converted, e.g. conversions from 120 V products to 220-240 V products.

d) The provision of Guarantee services does not extend the Guarantee period, nor does it initiate the commencement of a new Guarantee period. The Guarantee period for installed spare parts ends with the Guarantee period for the entire product.

e) FOR SOUTH-AFRICA & UAE ONLY:

Further or other claims, in particular claims for damages, are excluded unless liability is mandatory by law.

After expiry of the Guarantee period or for products for which the Guarantee does not apply, the KitchenAid customer service centres are still available to the end-customer for questions and information.

Further information is also available on our website:

- For U.K. & Ireland www.kitchenaid.eu
- For South-Africa: www.kitchenaidafrica.com
- For UAE: www.KitchenAid-MEA.com

PRODUCT REGISTRATION

Register your new KitchenAid appliance now: <http://www.kitchenaid.eu/register>

©2020 All rights reserved.

