

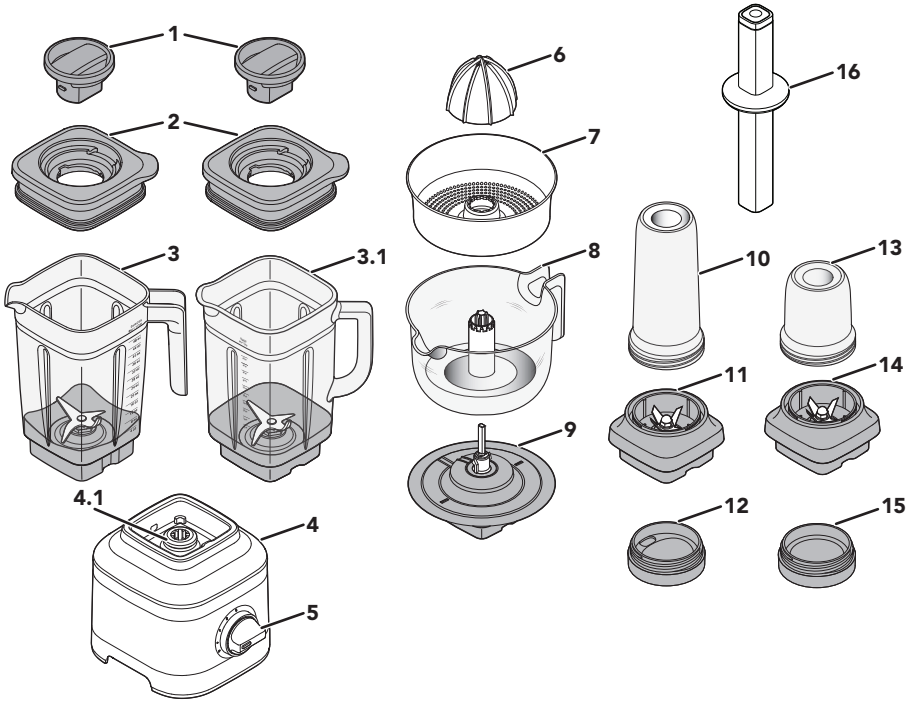
KitchenAid

STAND BLENDER
5KSB1320
PRODUCT GUIDE



W11573856A

PARTS AND FEATURES








1. Lid Centre Cap
2. Lid with Vent Well
3. Jar (1.4 L capacity)
- 3.1 Glass Jar* (1.4 L capacity)
4. Base
- 4.1 Interlock
5. Control Dial
6. Reamer*
7. Pulp Strainer/Basket*

8. Juice Container* (1 L capacity)
9. Gear Assembly*
10. Personal Jar* (0.5 L capacity)
11. Blade Assembly of Personal Jar*
12. Personal Jar Easy-Drink Lid*
13. Small Batch Jar* (0.2 L capacity)
14. Blade Assembly of Small Batch Jar*
15. Small Batch Jar Lid*
16. Tamper*

Contents may vary

*Accessories only included with certain models.

						
	Accessory model number	N/A	N/A	N/A	5KSB1CPA	KSB4048TPR
	Part numbers (see above)	1 - 2 - 3	1 - 2	10 - 11 - 12	6 - 7 - 8 - 9	16
Included in Main Model	5KSB1320	●	●	-	-	-
	5KSB1325	●	●	-	-	-
	5KSB1330	●	●	●	-	-
	5KSB1350	●	●	-	●	-

PRODUCT SAFETY

Your safety and the safety of others are very important.

We have provided many important safety messages in this manual and on your appliance. Always read and obey all safety messages.



This is the safety alert symbol.

This symbol alerts you to potential hazards that can kill or hurt you and others.

All safety messages will follow the safety alert symbol and either the word "DANGER" or "WARNING." These words mean:

⚠ DANGER

You can be killed or seriously injured if you don't immediately follow instructions.

⚠ WARNING

You can be killed or seriously injured if you don't follow instructions.

All safety messages will tell you what the potential hazard is, tell you how to reduce the chance of injury, and tell you what can happen if the instructions are not followed.

IMPORTANT SAFEGUARDS

When using electrical appliances, basic safety precautions should always be followed, including the following:

- 1.** Read all instructions. Misuse of appliance may result in personal injury.
- 2.** To protect against risk of electrical shock do not put the Stand Blender Base in water or other liquid.
- 3.** European Union only: Appliances can be used by persons with reduced physical, sensory or mental capabilities or lack of experience and knowledge if they have been given supervision or instruction concerning use of the appliance in a safe way and understand the hazards involved. Children shall not play with the appliance.
- 4.** European Union only: This appliance shall not be used by children. Keep the appliance and its cord out of reach of children.
- 5.** This appliance is not intended for use by persons (including children) with reduced physical, sensory or mental capabilities, or lack of experience and knowledge, unless they have been given supervision or instruction concerning use of the appliance by a person responsible for their safety.
- 6.** Children should be supervised to ensure that they do not play with the appliance.
- 7.** Turn the appliance OFF, then unplug from the outlet when not in use, before assembling or disassembling parts and before cleaning. To unplug, grasp the plug and pull from the outlet. Never pull from the power cord.
- 8.** Avoid contacting moving parts.
- 9.** Do not operate any appliance with a damaged cord or plug, or after the appliance malfunctions, or is dropped or damaged in any manner. Return appliance to the nearest Authorised Service Facility for examination, repair, or electrical or mechanical adjustment.
- 10.** Do not use outdoors.
- 11.** Do not let cord hang over edge of table or counter.
- 12.** Keep hands and utensils out of container while blending to reduce the risk of severe injury to persons or damage to the Blender. A scraper may be used but must be used only when the Blender is not running.

13. Never leave the appliance unattended while it is in operation.
14. Blades are sharp. Care should be taken when handling the sharp cutting blades, emptying the Jar and during cleaning.
15. Be careful if hot liquid is poured into the Blender as it can be ejected out of the appliance due to sudden steaming.
16. If the supply cord is damaged, it must be replaced by the manufacturer, its service agent or similarly qualified persons in order to avoid a hazard.
17. Allow the appliance to cool completely before putting on or taking off parts, and before cleaning the appliance.
18. Refer to the “Care and Cleaning” section for instructions on cleaning the surfaces in contact with food.
19. Always operate the Blender with cover in place.
20. When blending hot liquids or ingredients, Lid Centre Cap should remain in place over the Lid opening. Always start on lowest speed and slowly ramp to desired speed when blending hot liquids or ingredients.
21. Do not blend hot liquids and ingredients in the Personal Jar or Small Batch Jar.
22. To reduce the risk of injury, never place Blade Assembly on the Base without Personal Jar or Small Batch Jar properly attached.
23. The use of **attachments**, including canning Jars, not recommended or sold by the manufacturer may cause a risk of injury to persons.
24. This appliance is intended to be used in household and similar applications such as:
 - staff kitchen areas in shops, offices and other working environments;
 - farmhouses;
 - by clients in hotels, motels and other residential type environments;
 - bed and breakfast type environments.

SAVE THESE INSTRUCTIONS

For complete details on product information, instructions and videos, including Guarantee information, visit www.KitchenAid.co.uk or www.KitchenAid.eu. This may save you the cost of a service call. To receive a free printed copy of the information online, call **00 800 381 040 26**.

MOTOR HORSEPOWER

Motor horsepower for the Blender motor was measured using a dynamometer, a machine that laboratories routinely use to measure the mechanical power of motors. Our 1.5 peak horsepower (HP) motor reference reflects the horsepower output of the motor itself and not the Blender's horsepower output in the Blender Jar. As with any Blender, the power output in the Jar is not the same as the horsepower of the motor itself.

ELECTRICAL REQUIREMENTS

⚠ WARNING



Electrical Shock Hazard

Plug into an earthed outlet.

Do not remove earth prong.

Do not use an adapter.

Do not use an extension cord.

Failure to follow these instructions can result in death, fire, or electrical shock.

Voltage: 220-240 VAC

Frequency: 50-60 Hz

Wattage: 650 Watts

NOTE: If the plug does not fit in the outlet, contact a qualified electrician. Do not modify the plug in any way. Do not use an adapter.

Do not use an extension cord. If the power supply cord is too short, have a qualified electrician or service technician to install an outlet near the appliance.

The cord should be arranged so that it will not drape over the countertop or tabletop where it can be pulled on by children or tripped over unintentionally.

GETTING STARTED

The Blender features 3 speeds and Pulse function, allowing you to customise your blend. Recipes can differ significantly and might work best on speed that are not obvious. We encourage you to find the best speed match for your favourite recipes.

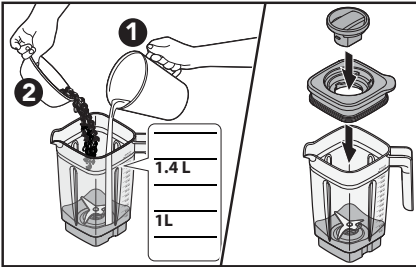
ACCESSORIES	CAPACITY	SPEED	SUGGESTED ITEMS TO BLEND
Blender Jar	1.4 L	Speed 1, 2, 3, and Pulse	Smoothies, Icy drinks, Shakes / Malts, Dips, Spreads and more.
Glass Blender Jar	1.4 L		Individual Smoothie, Icy drinks, Shakes / Malts and lower volume recipes.
Personal Jar	0.5 L		Small volume recipes - Purées, Sauces, Baby food, Dressings, Marinades, Pesto and more.
Small Batch Jar	0.2 L		
Citrus Press	1 L	Speed 1	Citrus juice, Grapefruit juice and more.

PRODUCT USAGE

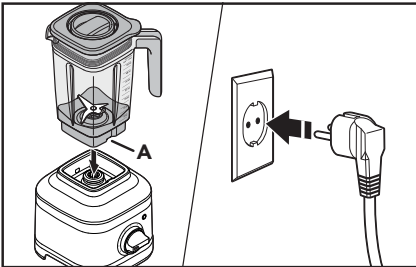
Before first use, clean all parts and accessories (see "Care and Cleaning" section). Be sure the countertop beneath the Blender and surrounding areas are dry and clean.

IMPORTANT: When moving your Blender, always support/lift from the Blender base. The base will become disengaged from Jar if, carried by Blender Jar or Blender Jar handle only.

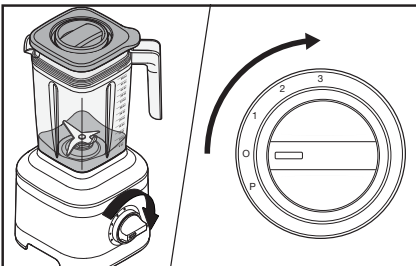
1. Add ingredients into Blender Jar OR Glass Blender Jar (max. 1.4 L). Secure the Lid and Lid Centre Cap.



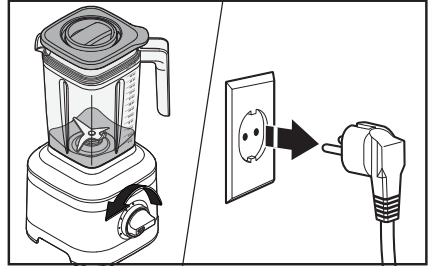
2. Place the Blender Jar on the Base by aligning with the Slot (A) to fit inside the Jar pad, so that the handle of the Jar will be towards the Control Dial. Plug the Blender into an earthed outlet.



3. Turn the Control Dial from (O) to desired speed for constant operation.



4. When finished, turn the Blender off by returning the Control Dial to (O). Unplug the Blender before removing the Blender Jar.

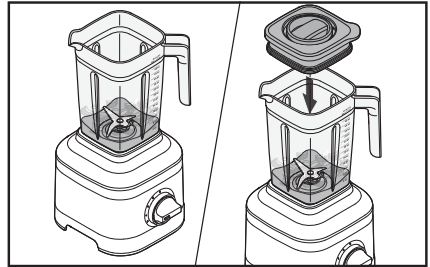


IMPORTANT: Allow the Blender to fully stop before removing the Lid, Jar, or pouring out your blended ingredients.

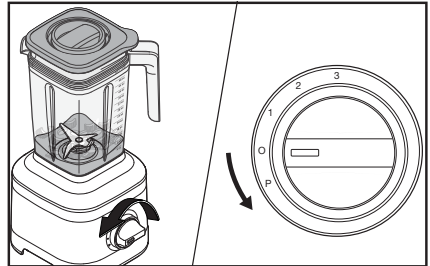
PULSE FUNCTION USAGE

Your Blender offers a "Pulse (P)" function with a Soft Start to avoid ingredient splatter. This function will continue until you release the Control Dial, returning to (O).

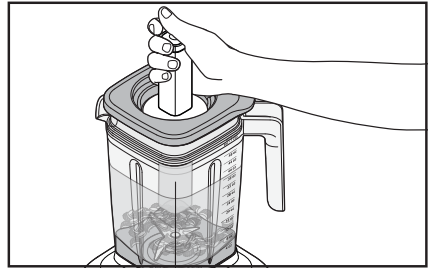
1. Place ingredients into the Blender Jar. Firmly secure the Lid with Lid Centre Cap on Blender Jar.



2. Turn and hold the Control Dial from (O) to (P) as per desired interval of time. When finished, release the Control Dial to stop the Blender.



- 3. Tamper*:** Remove the Lid Centre Cap only. Stir or press contents down towards the blade. Then, place the Lid Centre Cap back before resuming blending.



USING THE PERSONAL JAR

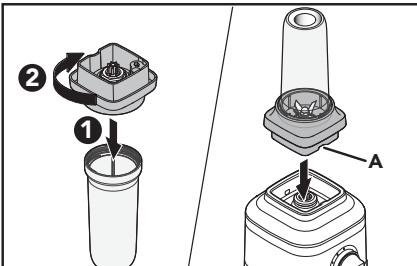
The Personal Jar is perfect in size for single servings or smaller recipes and handy to carry with you on the go. Before first use, clean all parts and accessories (see "Care and Cleaning" section).

IMPORTANT: Do not blend hot liquids and ingredients in the Personal Jar.

1. Add ingredients (max. 0.5 L). Add ice or frozen items, then leafy greens, then soft foods and liquids at last.

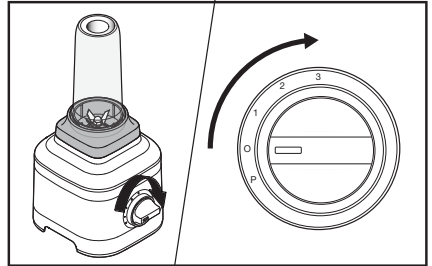


2. Secure the Blade Assembly on the Personal Jar and rotate it clockwise until it is tight. Place it on the Blender Base.

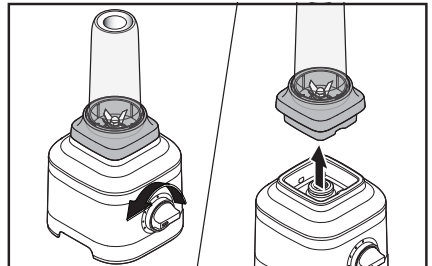


A. Slot

3. Turn the Control Dial from (O) to desired speed for constant operation.



4. When finished, turn the Blender off by returning Control Dial to (O). Always remove the Personal Jar with the Blade Assembly from the Base.



*Accessories only included with certain models.

USING THE SMALL BATCH JAR

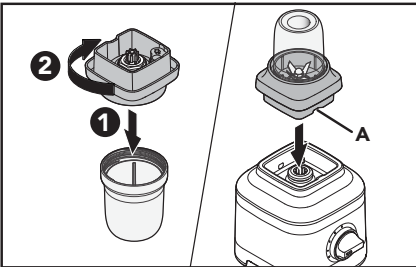
The Small Batch Jar is perfect for smaller recipes like sauces, dressings, marinades and more. Before first use, clean all parts and accessories (see "Care and Cleaning" section).

IMPORTANT: Do not blend hot liquids and ingredients in the Small Batch Jar.

1. Add ingredients into the Small Batch Jar (max. 0.2 L).

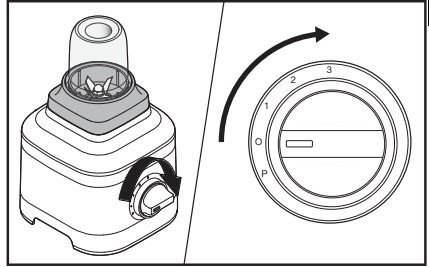


2. Secure the Blade Assembly on Small Batch Jar and rotate it clockwise until it is tight. Place it on the Blender Base.

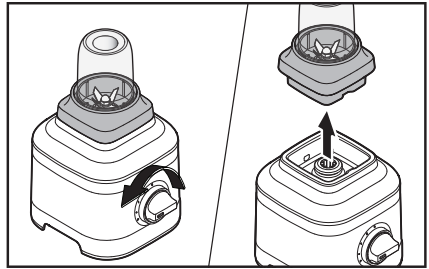


A. Slot

3. Turn the Control Dial from (O) to desired speed for constant operation.



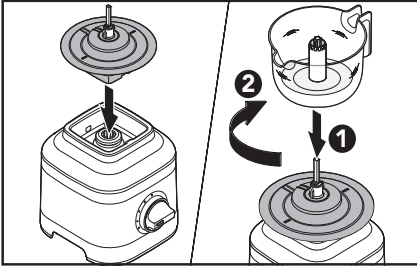
4. When finished, turn the Blender off by returning Control Dial to (O). Always remove the Small Batch Jar with Blade Assembly from the Base.



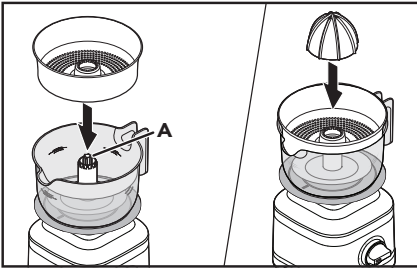
USING THE CITRUS PRESS

Before first use, clean all parts and accessories (see “Care and Cleaning” section).

1. Place the Gear Assembly on the Base. Then, place the Juice Container on the Gear Assembly and twist clockwise to lock in place.

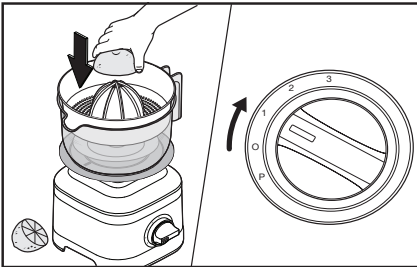


2. Place the Pulp Basket and then the Reamer into the Juice Container by aligning them with the Drive Shaft (A).

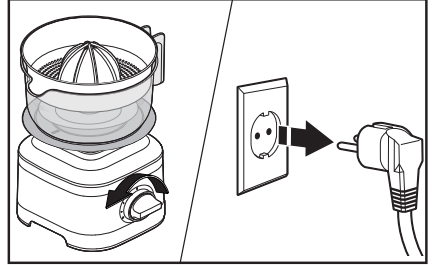


A. Drive Shaft

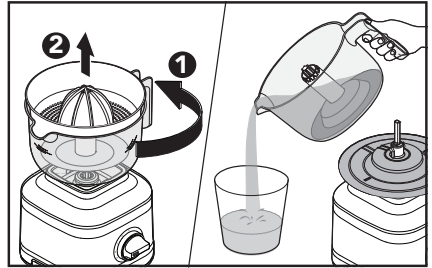
3. Hold down the halved citrus fruit on the Reamer. Turn the Control Dial from (O) to speed (1) to start juicing.



4. When finished juicing, turn the Blender off by returning Control Dial to (O). Unplug the Blender.



5. Twist the Juice Container counterclockwise and lift it by using handle. Pour and enjoy!

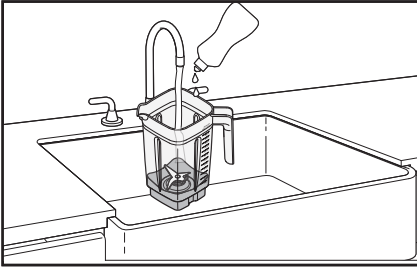


CARE AND CLEANING

IMPORTANT: Allow the appliance to cool completely before putting on or taking off parts, and before cleaning the appliance.

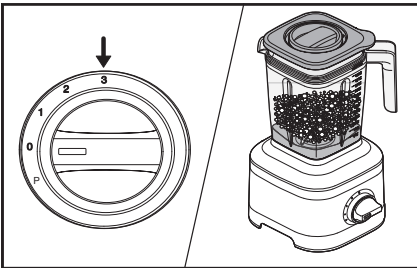
1. Empty the Jar. Fill half of the Jar with warm water and add 1 or 2 drops of dish-washing liquid.

Place the Jar on the Base. Secure the Lid and Lid Centre Cap.



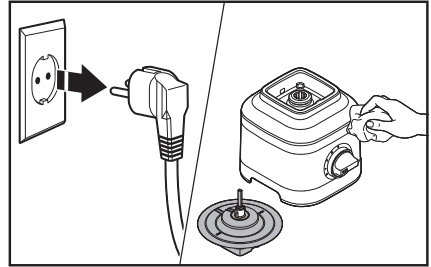
2. Run the Blender for 15-20 seconds on speed 3.

Remove the Jar, empty contents and rinse with warm water and dry thoroughly.



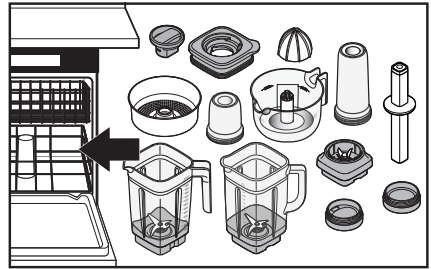
NOTE: To avoid damaging the Blender, do not immerse the Blender Base or cord in water. Do not use abrasive cleansers or scouring pads to avoid scratching the Blender.

3. Unplug the Blender before cleaning. Wipe clean the Base, Power Cord and the Gear Assembly of the Citrus Press with a warm, damp cloth and dry with a soft cloth.



4. **Dishwasher-safe, top rack only:** Personal Jar, Small Batch Jar, Lids, Blade Assembly, Reamer, Tamper, Juice Container, Pulp Basket and Lid Centre Cap.

Blender Jar and Glass Blender Jar can also be washed in the bottom rack.



TROUBLESHOOTING GUIDE

PROBLEM	SOLUTION
If Blender fails to start:	<p>Check to see if the Blender is securely plugged into an earthed electrical outlet.</p> <p>If you have a circuit breaker box, make sure the circuit is closed. Try unplugging the Blender, then plug it back into an earthed electrical outlet.</p>

PROBLEM	SOLUTION
If Blender stops while blending:	The Blender becomes overloaded or jammed. It will automatically shut off to prevent damage to the motor. Unplug the power cord. Remove the Blender Jar from the Base and use a spatula to rearrange ingredients in the Blender Jar.
	The Blender is overloaded, divide contents into smaller batches. For certain recipes, adding liquid to the Blender Jar may also reduce the load on the Blender.
If Blender stops while blending with Personal Jar or Small Batch Jar:	Unplug the power cord. Remove the Personal Jar or Small Batch Jar from the Base with the Blade Assembly. Shake it a little bit. Place it back on the Base, and then plug and turn the Blender back on to continue regular use.
If the problem cannot be corrected:	See the “Terms of KitchenAid Guarantee (“Guarantee”)” sections. Contact an Authorised Service Centre for assistance. Do not return the Blender to the retailer – retailers do not provide service.

ELECTRICAL EQUIPMENT WASTE DISPOSAL

DISPOSAL OF PACKING MATERIAL

The packing material is recyclable and is marked with the recycle symbol ♻️. The various parts of the packing must therefore be disposed of responsibly and in full compliance with local authority regulations governing waste disposal.

RECYCLING THE PRODUCT

- This appliance is marked in compliance with law in the EU and UK covering, Waste Electrical and Electronic Equipment (WEEE).
- By ensuring this product is disposed of correctly, you will help prevent potential negative consequences for the environment and human health, which could otherwise be caused by inappropriate waste handling of this product.
- The symbol ♻️ on the product or on the accompanying documentation indicates that it should not be treated as domestic waste but must be taken to an appropriate collection centre for the recycling of electrical and electronic equipment.

For more detailed information about treatment, recovery and recycling of this product, please contact your local city office, your household waste disposal service or the shop where you purchased the product.

DECLARATION OF CONFORMITY

FOR UNITED KINGDOM

This appliance has been designed, constructed and distributed in compliance with the safety requirements of UK Legislation: Electrical Equipment (Safety) Regulations 2016, Electromagnetic Compatibility Regulations 2016. The Ecodesign for Energy-Related Products and Energy Information (Amendment) (EU Exit) Regulations 2019. The Restriction of the Use of Certain Hazardous Substances in Electrical and Electronic Equipment Regulations 2012.

FOR EUROPEAN UNION

This appliance has been designed, constructed, and distributed in compliance with the safety requirements of EC Directives: Low Voltage Directive 2014/35/EU, Electromagnetic Compatibility Directive 2014/30/EU, Ecodesign Directive 2009/125/EC, RoHS Directive 2011/65/EU and following amendments.

TERMS OF KITCHENAID GUARANTEE ("GUARANTEE")

Covering U.K. - Ireland - South Africa - UAE

KitchenAid Europa, Inc., Nijverheidslaan 3, Box 5, 1853 Strombeek-Bever, Belgium ("Guarantor") grants the end-customer, who is a consumer, a Guarantee pursuant to the following terms.

FOR U.K.:

The Guarantee applies in addition to and does not limit or affect the statutory warranty rights of the end-customer against the seller of the product. In summary, the Consumer Rights Act 2015 says products must be as described, fit for purpose and of satisfactory quality. During the expected lifespan of your product your legal rights entitle you to the following:

- Up to 30 days: if your product is faulty, then you can get an immediate refund.
- Up to six months: if your product can't be repaired or replaced, then you're entitled to a full refund, in most cases.
- Up to six years: if your product does not last a reasonable length of time you may be entitled to some money back.

These rights are subject to certain exceptions. For detailed information please visit the Citizens Advice website www.adviceguide.org.uk or call **03454 04 05 06**.

FOR IRELAND:

The Guarantee applies in addition to and does not limit or affect the statutory warranty rights of the end-customer against the seller of the product under the European Communities (Certain Aspects of the Sale of Consumer Goods and Associated Guarantees Regulations 2003 (S.I. No. 11/2003)) and other enactments governing the sale of consumer goods.

FOR SOUTH AFRICA:

The Guarantee applies in addition to and does not limit or affect the statutory warranty rights of the end-customer against the seller of the product. In summary, the Consumer Protection Act, 2008 says that products must be: (i) reasonably suitable for the purpose for which they are intended; (ii) in good working order, of good quality and free of any defects; (iii) useable and durable for a reasonable period of time, having regard to the use to which they would normally be put and to all the surrounding circumstances; and (iv) in compliance with any applicable standards or any other public regulations.

During the expected lifespan of your product and where the products are not purchased online, your legal rights will entitle you to the following:

- You will be entitled to a full refund, if you did not have the opportunity to examine the product before delivery and if you rejected delivery of the product on the basis that the type and quality of the product was not as reasonably expected or did not reasonably conform to the material specifications.
- Within 5 business days after delivery: you may rescind your purchase and request a refund, if your purchase resulted from direct marketing.
- Within 10 business days after delivery: you will be entitled to a full refund, if it is found that the product was unsuitable for a particular purpose specifically communicated to you by the Guarantor.
- Within 15 business days after delivery: you will be entitled to a refund if: (i) the product was not delivered to you; or (ii) if you returned the product to the Guarantor.
- Within 6 months after delivery: you will be entitled to a refund or a replacement product, if the product is defective or fails to operate in terms of its specifications.

Where you have purchased a product online your legal rights will be governed by the Electronic Communications and Transactions Act, 2002 and you will be entitled to the following:

- Within 7 days after conclusion of the transaction or after delivery: you may cancel your purchase without reason and without penalty.
- Within 30 days of the date of cancellation of the transaction: you will be entitled to receive a refund, if you have already made payment.
- You will only be liable for the direct costs of returning the product to the Guarantor.

FOR UAE:

The Guarantee applies in addition to and does not limit or affect the statutory warranty rights of the end-customer against the seller of the product.

1. SCOPE AND TERMS OF THE GUARANTEE

- a) The Guarantor grants the Guarantee for the products mentioned under Section 1.b) which a consumer has purchased from a seller or a company of the KitchenAid-Group within the following countries: U.K., Ireland, or South Africa, or the United Arab Emirates (UAE).

b) The Guarantee period depends on the purchased product and is as follows:

Two Year full guarantee from date of purchase.

- c) The Guarantee period commences on the date of purchase, i.e. the date on which a consumer purchased the product from a dealer or a company of the KitchenAid-Group.
- d) The Guarantee covers the defect-free nature of the product.
- e) The Guarantor shall provide the consumer with the following services under this Guarantee, at the choice of the Guarantor, if a defect occurs during the Guarantee period:
 - Repair of the defective product or product part, or
 - Replacement of the defective product or product part. If a product is no longer available, the Guarantor is entitled to exchange the product for a product of equal or higher value.
- f) If the consumer wishes to make a claim under the Guarantee, the consumer has to contact the country specific KitchenAid service centres or the Guarantor directly at KitchenAid Europa, Inc. Nijverheidslaan 3, Box 5, 1853 Strombeek-Bever, Belgium;

Email-Address U.K.: CONSUMERCARE.UK@kitchenaid.eu

Email-Address IRELAND: CONSUMERCARE.IE@kitchenaid.eu

Toll Free Number U.K. & IRELAND: **00 800 381 040 26**

FOR SOUTH-AFRICA:

Our local KitchenAid Distributor:

KitchenAid Africa
PO Box 52102
V&A Waterfront
Cape Town
8002

Contact our distributor:

Telephone: +27 21 555 0700

You can contact our Customer Service Centre for Small Domestic Appliances from 8.30 am to 1.00 pm and from 1.30 pm to 5.00 pm or write to us at the following address: hello@kitchenaidafrica.com

FOR UAE:

AL GHANDI ELECTRONICS.

POST BOX NO. 9098,
DUBAI, UNITED ARAB EMIRATES
Toll free number: +971 4 2570007

- g) The costs of repair, including spare parts, and any postage costs (if applicable) for the delivery of a defect-free product or product part shall be borne by the Guarantor. The Guarantor shall also bear the postage costs for returning the defective product or product part if the Guarantor or the country specific KitchenAid customer service centre requested the return of the defective product or product part. However, the consumer shall bear the costs of appropriate packaging for the return of the defective product or product part.
- h) To be able to make a claim under the Guarantee, the consumer must present the receipt or invoice of the purchase of the product.

2. LIMITATIONS OF THE GUARANTEE

- a) The Guarantee applies only to products used for private purposes and not for professional or commercial purposes.
- b) The Guarantee does not apply in the case of normal wear and tear, improper or abusive use, failure to follow the instructions for use, use of the product at the wrong electrical voltage, installation and operation in violation of the applicable electrical regulations, and use of force (e.g. blows).
- c) The Guarantee does not apply if the product has been modified or converted, e.g. conversions from 120 V products to 220-240 V products.
- d) The provision of Guarantee services does not extend the Guarantee period, nor does it initiate the commencement of a new Guarantee period. The Guarantee period for installed spare parts ends with the Guarantee period for the entire product.
- e) **FOR SOUTH-AFRICA & UAE ONLY:**
Further or other claims, in particular claims for damages, are excluded unless liability is mandatory by law.

After expiry of the Guarantee period or for products for which the Guarantee does not apply, the KitchenAid customer service centres are still available to the end-customer for questions and information.

Further information is also available on our website:

- For U.K. & Ireland www.kitchenaid.eu
- For South-Africa: www.kitchenaidafrica.com
- For UAE: www.KitchenAid-MEA.com

PRODUCT REGISTRATION

Register your new KitchenAid appliance now: <http://www.kitchenaid.eu/register>

KitchenAid

©2022 All rights reserved.