



INSTRUCTION REF:
ISSUE No. 1
DATE: March 2012
Page 1 of 12

TELEPHONE: SERVICE (44) 01332 875665
FAX: SERVICE (44) 01332 875536



PLANETARY MIXERS

MODEL No. RO-M10L

MODEL No. RO-M20L

MODEL No. RO-M30L

- INSTALLATION INSTRUCTIONS
- SAFETY INSTRUCTIONS
- USER INSTRUCTIONS



TELEPHONE: SERVICE (44) 01332 875665
FAX: SERVICE (44) 01332 875536

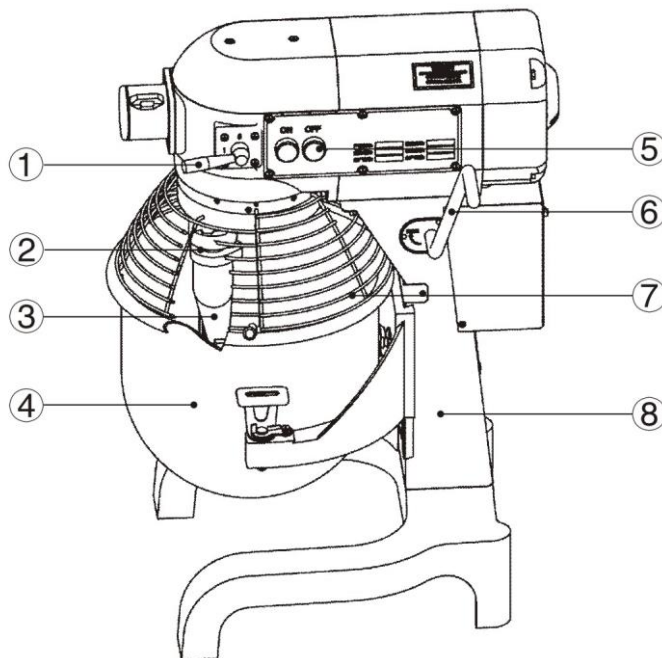
IMPORTANT:

Read the following instructions carefully and keep in a safe place for future reference. All work required to install the appliance should be carried out in compliance with all local standards and regulations and must be carried out by qualified personnel only.

Technical parameters

Name	Barrel Volume (L)	Power (KW)	Weight (Kg)	Speed of stirring shaft (r/min)			Overall Dimensions(mm)
				1stSpeed	2ndspeed	3rdspeed	
	10	0.5	75	108	195	355	485*410*635
	20	1.1	90	108	195	355	600*600*780
	30	1.5	180	91	166	282	700*620*1200

Main External Parts of Mixer



1. Hand operated gear change lever
2. Stirring shaft
3. Mixer
4. Stainless barrel
5. Power switch
6. Tilt lever
7. Safety guard
8. Support



TELEPHONE: SERVICE (44) 01332 875665
FAX: SERVICE (44) 01332 875536

Operating Instructions

- Standard power supply.
- Installation of Mixer: Put the stirring shaft (2) in Mixer (3) and rotate it in a clockwise direction.
- Starting procedure: Pull the gear change lever (1) to position 1 before starting, then turn on the power switch (5) and set the speed required. When the mixer is in normal operation, pull the hand lever (6) to the highest point and lift the safety guard (7) to the highest position.
- Speed Change: if you want to change the speed, please turn off the power switch (5) first, and then pull the gear change hand lever (1) to the position required.
- Shutting down: when the operation is complete, turn off the power switch (5) first then pull the gear change hand lever (1) to position 1, and pull back the hand lever (6) to the lowest point and finally disconnect power supply.

Accessories and Functions

- **Spherical mixer:** Used for stirring of liquid materials, such as cream and eggs. Recommended speed: mid or high speed.
- **Plate mixer:** Used for stirring of paste, powder, stuffing and cake dough. Recommended speed: Start with low speed, progressing to mid speed.
- **Hook mixer:** Used for stirring of more sticky materials, such as dough. Recommended speed: low speed.
-

Notes

- Never put your hand into the stirring barrel during operation.
- Don't operate the mixer beyond the time limit.
- The mixer should be mounted on a stable and clean surface, positioned away from overheated or wet places and away from equipment which has strong electromagnet or can produce strong electromagnet.
- Always keep the machine clean. Disconnect power supply before maintenance. Clean with a soft damp cloth. Do not use liquid or spray detergent.



TELEPHONE: SERVICE (44) 01332 875665
FAX: SERVICE (44) 01332 875536

Maintenance

- Clean the bowl and stirrer daily and after use to maintain hygiene standards.
- Clean the mixer with a damp soft cloth. Do not use liquid or corrosive spray detergent to clean the mixer.
- The transmission gear box is greased in factory. Check the greasing at 6 monthly intervals. To add or refill grease, open the top cover, then fill grease from aperture or replace the grease directly.

TROUBLE SHOOTING

Problems	Causes	Solutions
Tool shaft does not rotate after starting the machine	Loose electric wiring	Check electric wiring tighten those loose connections
Oil leakage	The seal rings are worn out	Replace seal rings
Motor temperature rises or reduced output speed	Voltage too low	Check the power supply
	Over-loaded	Reduce load
	The speed of mixing is too high or wrong stirrer is in use	Select a suitable speed and stirrer
The bowl contents are unevenly distributed	The stirrer or bowl is misshapen	Repair or replace the stirrer or bowl
Abnormal noise and high temperature from gearbox	Insufficient lubrication	Add or replace the grease



TELEPHONE: SERVICE (44) 01332 875665
FAX: SERVICE (44) 01332 875536

PARTS OF 10 L MIXERS

SER.NO.	PART.NO	PART NAME	SER.NO	PART.NO	PART NAME
1	40306000	Wire whip	42	40301200	Gear
2	40305900	Hook	43	40307400	Taper gear
3	50406002	Spring	44	50501010	Motor
4	50405020	Pin shaft	45	40301400	Combination of gear
5	40303500	Shifting yoke	46	50405019	Bushing
6	40305800	Flat Beater	47	40301500	Clutch
7	40301900	Main shaft	48	40302600	Inner gear
8	50304005	Nut	49	40302500	Gear box
9	40301800	Lining ring	50	40304200	Support
10	50301006	Bearing 6204	51	40304400	Base
11	40303300	Speed handle	52	50306023	Retainer-spring
12	40303100	Handle shaft	53	50304018	Nut
13	40303800	Lining ring	54	50308006	Spring washer 10
14	50310006	Oil seal	55	40300600	Gear shaft
15	50405065	Locking bolt	56	50313012	Key 4x12
16	40303200	Block handle	57	50312002	Circlips for shaft 12
17	50405016	Block handle cover	58	40300700	Gear
18	50405015	Plug	59	40300800	Lining ring
19	40303000	Cam-gear shifter	60	40300900	Gear
20	50601005	Attachment hub	61	40301000	Ring

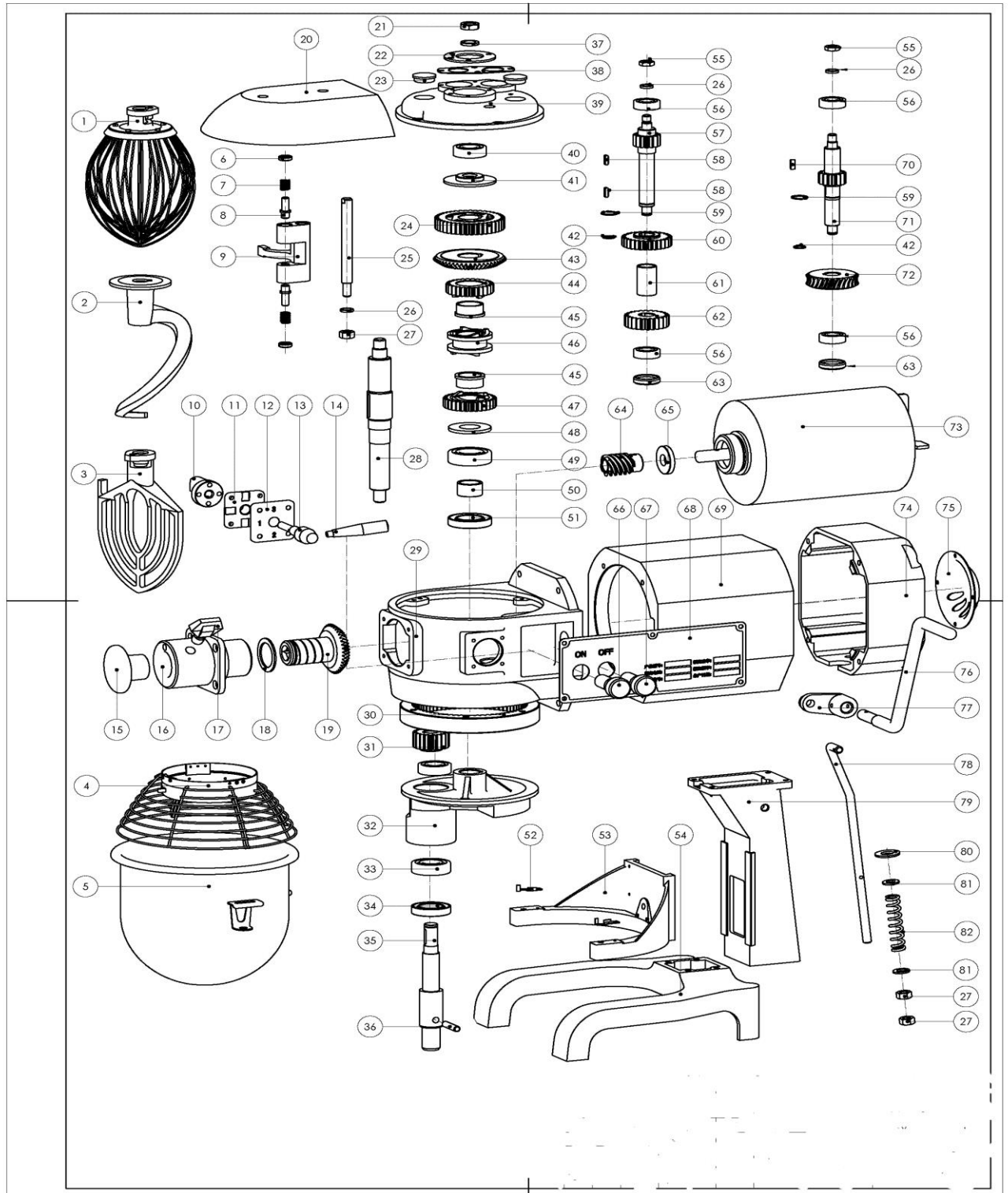


TELEPHONE: SERVICE (44) 01332 875665
FAX: SERVICE (44) 01332 875536

21	40307200	Taper gear wheel	62	50301001	Bearing 6001
22	40302400	Circlips for shaft	63	40300400	Shaft worm gear
23	40302700	Planet gear	64	50312006	Circlips for shaft
24	50301004	Bearing 6202	65	40300500	Worm gear
25	40302 900	Operating shelf	66	50312 006	Bearing 6001
26	40306 400	Safety guard	67	40300 500	Cover
27	40302 800	Shaft	68	50301 001	Back guard
28	50301 005	Bearing 6203	69	40303 600	Worm gear
29	50310 003	Oil seal 20x40x7	70	40300 100	Back cover
30	50401 003	Bowl	71	40300 200	Motor box
31	50603 045	Cover	72	40305 501	Crank lever
32	50405 032	Plug	73	40305 600	Handle
33	50304 020	Nut	74	40305 200	Connecting rod
34	50405 021	Control nut	75	40303 900	Stud
35	40303 400	Declutch shaft	76	50406 001	Spring
36	50308 005	Spring washer 8	77	50307 006	Clamp plate 10
37	40301 700	Gear	78	50304 006	Nut M10
38	40301 200	Spring washer 14	79	50405 074	Press board
39	40307 400	Support	80	50402 109	Brand
40	50501 010	6003	81	50506 026	Start switch
41	40301 400	Spindle cover	82	50506 029	Stop switch



TELEPHONE: SERVICE (44) 01332 875665
FAX: SERVICE (44) 01332 875536





TELEPHONE: SERVICE (44) 01332 875665
FAX: SERVICE (44) 01332 875536

PARTS OF 20 L MIXER

SER.NO.	PART.NO	PART NAME	SER.NO	PART.NO	PART NAME
1	40506300	Wire whip	42	50312002	Circlips for shaft 12
2	40506500	Spiral dough hook	43	40507200	Taper gear wheel
3	40506200	Flat Beater	44	40501700	Gear
4	40506700	Safety guard	45	50405041	Bushing
5	50401006	Bowl assembly	46	40501800	Sleeve
6	50405064	Plunger-shifter yoke	47	40502000	Gear
7	50406021	Spring	48	40502100	Ring
8	50405029	Pin shaft	49	50301007	Bearing 6205
9	40503600	Shifting yoke	50	40502200	Bushing
10	40502900	Cam-gear shifter	51	50310010	Oil seal 30X52X10
11	40503100	Plate-shifter index	52	50405074	Press board
12	50405016	Handle-shifter cover	53	50601026	Support
13	40503300	Handle-shifter	54	50601027	Case
14	40303300	Speed handle	55	50304018	Nut
15	50405015	Plug	56	50301003	Bearing
16	40507100	Hub	57	40501100	Gear wheel
17	50405065	Handle	58	50313013	Key 4*14
18	50405026	Ring	59	50312006	Circlips for shaft 18
19	40506600	Taper gear wheel	60	40501000	Gear
20	50403009	Top cover	61	40500600	Bushing



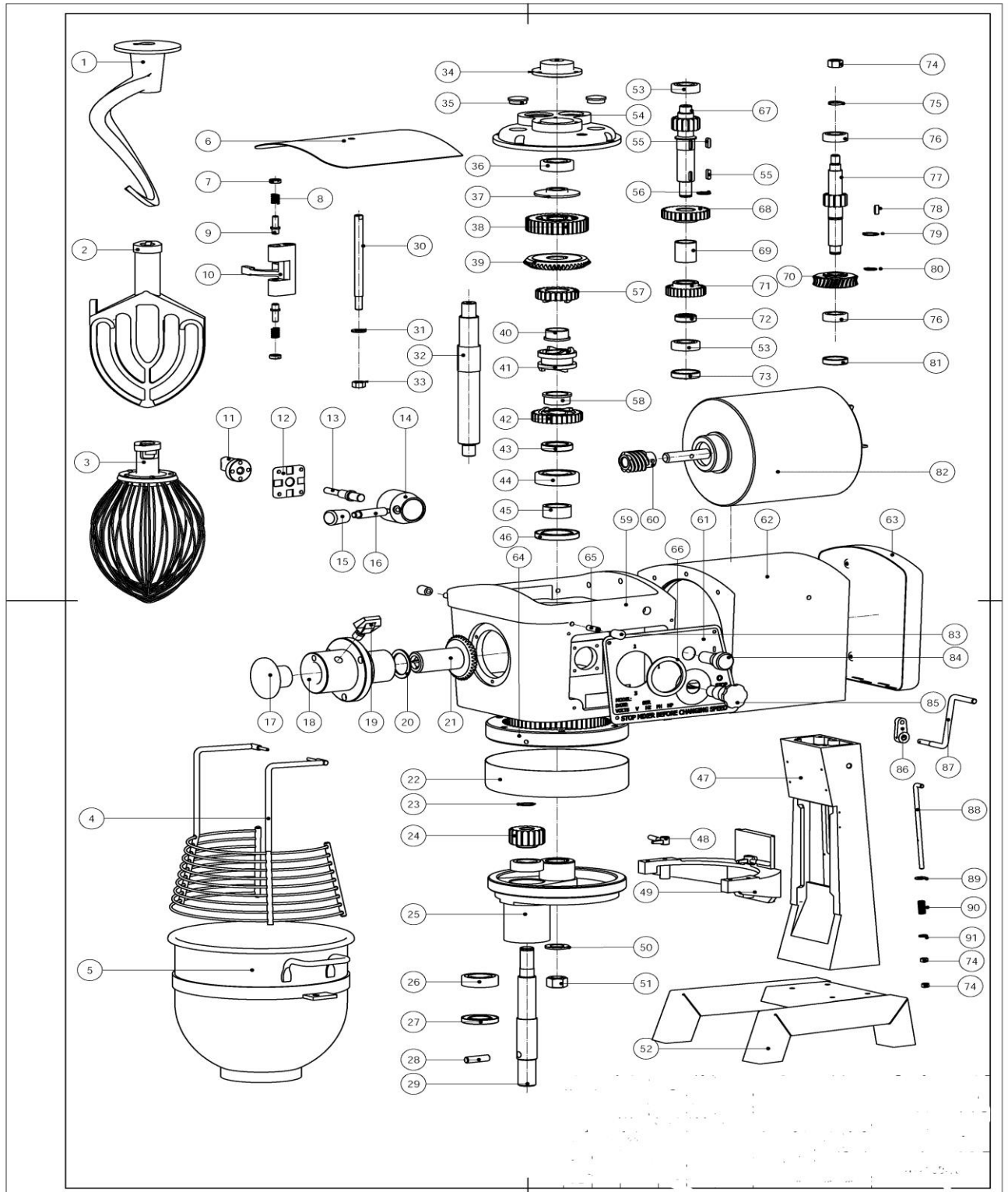
TELEPHONE: SERVICE (44) 01332 875665
FAX: SERVICE (44) 01332 875536

21	50304020	Nut	62	40500500	Gear
22	50405052	Pressing plate	63	40503800	Plug cover
23	50405032	Plug cover	64	50405025	Worm gear
24	40501500	Gear	65	50310002	Oil seal
25	40503500	Declutch shaft	66	50506026	Green button
26	50308006	Spring washer 10	67	50506029	Red button
27	50304006	Nut M10	68	50402024	Brand
28	40501400	Main shaft	69	40500300	Motor box
29	40502300	Gear box	70	50313015	Key 5*14
30	40502400	Internal gear	71	40500900	Gear
31	40502600	Gear	72	40500800	Worm wheel
32	40502700	Operating shalf	73	50501016	Motor
33	50301006	Bearing	74	40500200	Back housing
34	50310008	Oil seal 28X47X10	75	40500100	Back Cover
35	40502800	Working shaft	76	40505600	Handle
36	50306030	Retainer-pin 8x35	77	40505400	Crank lever
37	50308008	Spring washer 14	78	40505200	Connecting rod
38	50405051	Pressing plate	79	40504100	Stud
39	40500700	Transmission shaft support	80	50307008	Clamp plate
40	50301005	Bearing 6203	81	50307006	Clamp plate
41	40501300	Spacer	82	50406005	Spring



TELEPHONE:
FAX:

SERVICE (44) 01332 875665
SERVICE (44) 01332 875536





TELEPHONE: SERVICE (44) 01332 875665
FAX: SERVICE (44) 01332 875536

PARTS OF 30 L MIXER

SER.NO.	PART.NO	PART NAME	SER.NO	PART.NO	PART NAME
1	40705900	Hook	47	40704000	Body housing
2	40705800	Beater	48	40704200	Bowl hold kits
3	40706000	Wire Whip	49	40705100	Support
4	40708200	Safety guard	50	50307009	Clamp plate 18
5	50401008	Bowl	51	50304012	Nut M8*1.5
6	40707300	Top cover	52	50405038	Base
7	50405064	Screw	53	50301005	Bearing 6203
8	50406021	Spring	54	40700500	Transmission shaft support
9	50405029	Shaft	55	50313016	Key 5*16
10	40703400	Yoke	56	50312005	Circlips for shaft 17
11	40502900	Cam-gear	57	40701700	Gear
12	40503100	Plate-shifter index	58	50405042	Bushing
13	40700200	Handle-shifter	59	40701400	Gear box
14	40700300	Handle set	60	50405025	Worm gear
15	50405044	Turn set M6	61	50402037	Brand
16	40700100	Speed handle	62	40700400	Motor
17	50405015	Plug attachment hub	63	50405037	Back housing
18	40701900	Attachment hub	64	40702400	Internal gear
19	50405065	Spring	65	50305075	Tighten yoke M8x25
20	50405026	Circlips	66	50405049	Crank lever
21	40701800	Gear	67	40700900	Handle
22	50405033	Hood ring	68	40700800	Gear
23	50312007	Circlips for shaft 19	69	40703200	Bushing
24	40702600	Planet gear	70	40700700	Worm Gear
25	40702700	Operating shelf	71	40702900	Gear



TELEPHONE: SERVICE (44) 01332 875665
FAX: SERVICE (44) 01332 875536

26	50301007	Bearing 6205	72	40703100	Washer
27	50310009	Oil seal	73	40703000	Plug cover 1
28	50306036	Pin 10*38	74	50304007	Nut M12
29	40702800	Working shaft	75	50308007	Spring washer 12
30	40703600	Declutch shaft	76	50301004	Bearing 6202
31	50307006	Plate 10	77	40700600	Gear wheel
32	40701300	Main shaft	78	50313016	Key 5x15
33	50304006	Nut M10	79	50312008	Circlips for shaft 20
34	40701100	Top batter valve cap	80	50312003	Circlips for shaft 15
35	50405032	Flat valve cap	81	40703300	Plug cover 2
36	50301006	Bearing 6204	82	50501031	Motor
37	40701200	Main shaft plug cover	83	50405050	Rubber set
38	40701500	Spacer	84	50506026	Green button
39	40701000	Gear	85	50506030	Red button
40	50405041	Bushing	86	40705500	Crank lever
41	40702000	Sleeve	87	40705700	Handle-shifter
42	40702100	Gear	88	40705300	Connecting rod
43	40702200	Clamp plate	89	50307008	Clamp plate 14
44	50301008	Bearing 6206	90	50406022	Spring
45	40702300	Bushing	91	50307007	Clamp plate 12
46	50310015	Oil seal 40*62*8			