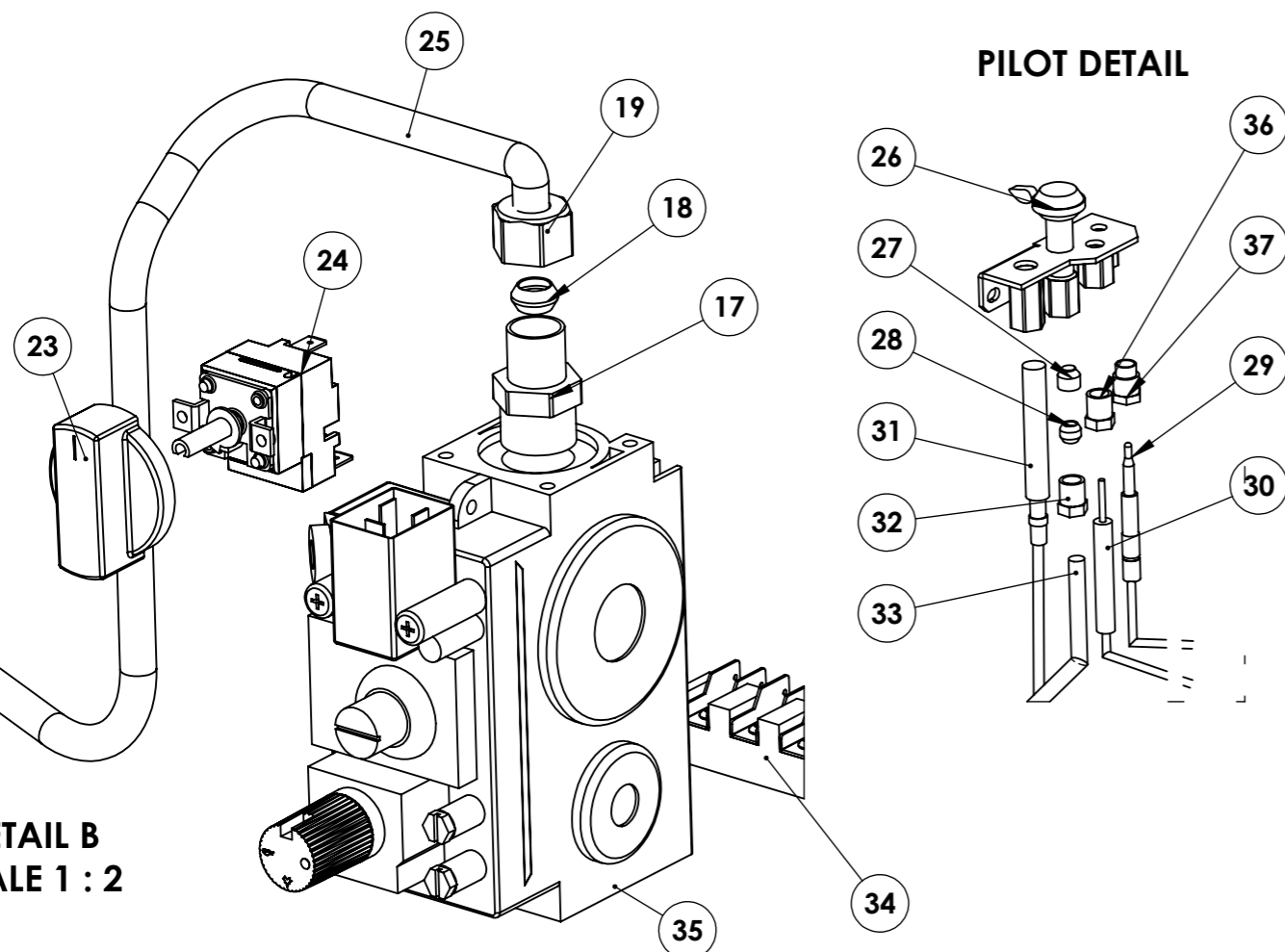


DETAIL C
SCALE 1 : 3.5



DETAIL B
SCALE 1 : 2

PILOT DETAIL

NO	ITEM NO	ITEM CODE	PCS
1	RIGHT SIDE COVER	116 18 964 102	1
2	CONTROL PANEL	116 18 964 103	1
3	THERMEMETER 500°C	396 103 33 423	1
4	CHROME LEG	208 17 100 147	4
5	BURNER FRONT COVER	116 18 964 104	1
6	BURNER REAR COVER	116 27 964 105	1
7	DOORS REAR PLATE	116 18 964 107	2
8	DOOR FRONT PLATE LEFT	116 18 964 106	2
9	SIDE COVER	116 18 964 101	1
10	GROOVED STONE	200 363 33 758	4
11	DOOR HANDLE MIL	124 679 64 101	4
12	BAKELITE HOLDER	180 28 231 100	4
13	LIGHTER SILICONE WIRE	101 15 934 103	1
14	LIGHTER	261 17 100 101	1
15	LIGHTER COVER	210 21 933 101	1
16	ATMOSPHERIC BURNER	423 10 964 101	1
17	VALF RAKOR BODY NUT	106 16 964 101	2
18	Ø13 RING	141 16 964 110	2
19	M16 NUT	130 10 204 101	2
20	1,60 BURNER INJEKTOR	108 16 746 931	3
21	M13x1 INJEKTOR HOLDER	108 16 349 677	3
22	BURNER AIR ADJUSTMENT PLATE	107 23 964 101	1
23	BAKELITE THERMOSTAT BOTTON	111 28 333 100	1
24	THERMOSTAT 85-450° Ø10 COPPER BURNER PIPE	109 10 433 450	1
25	PILOT	120 41 476 102	1
26	PILOT	424 16 964 101	1
27	Ø0,41 PILOT INJEKTOR	108 16 964 104	1
28	Ø6,20 RING	141 16 964 106	1
29	M9x1 THERMOKUPL NUT	137 41 964 102	1
30	M4 ROUND PLUG	432 10 204 101	1
31	PILOT HEAT PROB	137 41 964 101	1
32	PILOT INJEKTOR HOLDER	108 16 964 102	2
33	Ø6 COOPER PILOT PIPE	120 41 282 101	1
34	3 CONNECTED KLEMENS	257 65 193 103	1
35	GAS VALVE	159 22 964 101	1
36	PILOT SPARK NUT	130 10 964 101	2
37	PILOT THERMOKUPL NUT	130 10 964 102	2