

**3 YEAR  
WARRANTY**  
PARTS &  
LABOUR

Create  
perfection  
with peace

**→ ADVANCE**  
SERIES



**GRAM**

As the premium market leader in ice makers, we have now set our goal even broader and want to become the premium market leader for commercial ice and refrigeration products. And as the only international brand in this category, this creates a lot of opportunities.

We are driven to be the international most qualitative benchmark brand for the whole category. To achieve this goal together, we want to refocus and align all our potential, resources, and ambition. This means that we integrate our brands and create one strong unified unprecedented Hoshizaki portfolio in the EMEA market. We are incorporating all the Gram knowledge and expertise into the Hoshizaki premium cooling portfolio. By combining the best of Danish engineering and Japanese precision and quality control we are now able to offer the best-in-class solution for the entire category of cooling.

## Best of both worlds.

Bringing the best of both worlds together immediately sets Hoshizaki up as the most qualitative, most prestigious, innovative, and proven global player on the specialized cooling scene. That guarantees all clients to be serviced with the best engineered, durable, reliable, and efficient system available today. A superior system that cools and freezes smarter, safer, and even more sustainable. Because we care for ease, quality, and carefree. Offering professionals premium performance and peace of mind for now and in the future.

## Together we will rise to the challenge.

In our brand new state-of-the-art production facilities in multiple countries, we are developing all-in-one premium systems, integrating features and uniform product series. With these developments, we are integrating and streamlining

## Let's grow together!

We are building upon a solid foundation of over a century of experience. A premium brand on the international market with a great reputation in which we will keep investing.

AT A GLANCE

# The Advance

## Solid foundation

With a reputation for delivering smart refrigeration solutions, Hoshizaki can lean on its solid engineering and design heritage to develop cabinets that help you become a better chef and kitchen operator.



## Temperature stability

The intelligent air distribution system allows high performance, ensuring temperature stability despite frequent door openings and during defrosting.



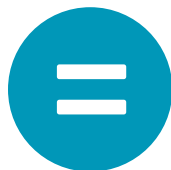
## Designed to last

The Interior and exterior are made of anti-corrosion stainless steel, the best material for humid locations. ADVANCE cabinets are designed to withstand the demanding conditions of large kitchen operations.



## Quick maintenance

The mono-block design with an extractable condenser lowers maintenance costs, eases service, and ensures stable performance.



## Uniform design

The exterior of all ADVANCE cabinets features a uniform design that seamlessly and aesthetically fits into your Hoshizaki refrigeration concept.



## Easy cleaning & waste reduction

Thanks to the rounded corners and smooth surfaces, frequented cleaning routines become a quick and simple task. The practical anti-tilting shelves prevent spillage. The cabinet has a rounded base and comes with removable gaskets for easy cleaning.

# Advance key features quick guide.

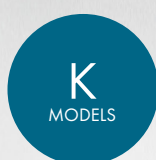


- Ideal for commercial kitchens  
(Front of House/ Back of House)
- Suitable for use in ambient  
temperatures of up to +40°C (tropical)
- Heavy-duty cabinets
- High performance, ensuring  
temperature stability despite  
frequent door openings
- Meets 2/1 deep  
Gastronorm standard

- 1 > Low noise levels
- 2 > Full-height ergonomic handle for easy cleaning
- 3 > Seamless structure for easy cleaning inside the cabinet
- 4 > 40-42 kg/m<sup>3</sup> density environment-friendly HFC-Free Polyurethane insulation for low energy consumption (60 mm) and minimal temperature increase during defrosting
- 5 > Self-closing door at an angle of less than 90 degrees
- 6 > 304 or 430 quality stainless steel for durability and food safety
- 7 > Mono-block design for maximum internal capacity and easy maintenance
- 8 > Low maintenance condenser
- 9 > Automatic fan cutout switch



- < 10 Built-in LED light
- < 11 Wide magnetic removable gasket with triple insulation area provides an effective seal, reduces escaping cold air
- < 12 Most efficient air distribution inside with a specially designed air channel.
- < 13 Ventilated cooling design
- < 14 Protecting Class (IP2X)
- < 15 Reversible door allows the appliances to be adapted to any individual installation site
- < 16 According to your preference: Legs or Castors available
- < 17 Door Lock



Refrigerator  
+0°C/+10°C



Freezer  
+0°C/+10°C

# Advanced cabinets for reliable refrigeration

## **ABOUT ADVANCE**

The Hoshizaki ADVANCE is a series of durable refrigeration and freezer cabinets, exceeding the requirements of demanding commercial kitchen environments.

## **QUALITY COOLING YOU CAN RELY ON**

Having kept food safety, easy cleaning, and standardized application possibilities at the core of the design concept, the ADVANCE series is the perfect fit for diverse kitchen environments, from catering to large-scale projects, such as hotels and Quick Service Restaurants.

ADVANCE cabinets strike with extended functionalities for hygiene and food safety, simplifying kitchen control and management procedures for your peace of mind.



## **FOOD-SAFE & DURABLE MATERIALS**

Interior and exterior are made of stainless steel, the best material for humid locations. ADVANCE cabinets are designed to withstand the demanding conditions of large kitchen operations.

Hoshizaki's ADVANCE series is designed to simplify kitchen routines, including storage, prepping, and cleaning.

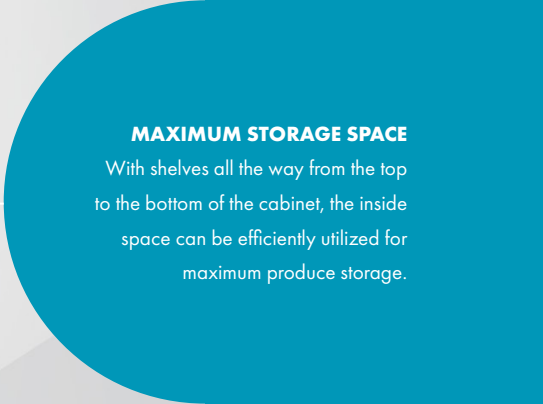
ADVANCE cabinets maintain stable temperatures, even during defrosting. This is crucial for optimal food safety and enhanced shelf-life.





**KEEP THE COOL INSIDE**

Wide magnetic and removable gasket with triple insulation area provides an effective seal, and reduces escaping cold air.



**MAXIMUM STORAGE SPACE**

With shelves all the way from the top to the bottom of the cabinet, the inside space can be efficiently utilized for maximum produce storage.

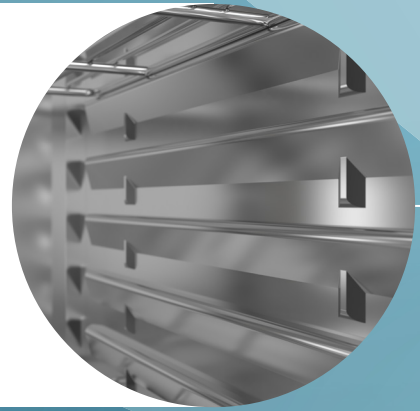


**ERGONOMIC  
FULL-LENGTH HANDLE**

Easy to clean, minimising the risk of residue accumulation.

**HYGIENE AND FOOD SAFETY**

Thanks to the rounded corners and seamless surfaces, frequented cleaning routines become a quick and simple task. The practical anti-tilting shelves prevent spillage. The cabinet has a rounded base and comes with removable gaskets for easy wiping.



# Food safety and ease of operations.

THE ADVANCE series is dedicated to simplifying the day-to-day work routines of kitchen staff all around the world. The cabinets strike with low running costs, thanks to eco-friendly refrigerant R290, as well as sturdy materials.

The interior and exterior are made of easy-to-clean stainless steel, which is among the best choices when it comes to materials for hygienic and food-safe cooking environments.



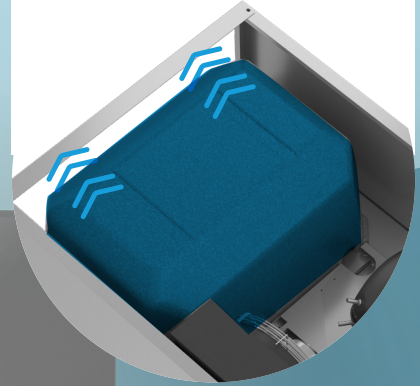
**UNIFORM KITCHEN DESIGN**

The exterior of all ADVANCE cabinets features a uniform design that fits seamlessly into your Hoshizaki kitchen concept.



### MONO-BLOCK TECHNOLOGY

The ADVANCE refrigeration system uses a mono-block construction. This brings two important advantages. As the evaporator is positioned on top of the cabinet, valuable space inside the cabinet can be used for storage. Additionally, it is removable for easier maintenance and repair.



### TEMPERATURE STABILITY

The intelligent air distribution system allows high performance, ensuring temperature stability despite frequent door openings and during defrosting.



SPECIFICATIONS

**3 YEAR  
WARRANTY**  
PARTS &  
LABOUR

**AT A GLANCE**

# The Advance



→ADVANCE

# 70



2/1 GN



### ADVANCE K 70-4 L DR

### ADVANCE F 70-4 L DR

|                                   | 131701010           | 133701010           |
|-----------------------------------|---------------------|---------------------|
| Item number                       | 131701010           | 133701010           |
| Temperature range                 | +0°C/+10°C          | -25°C/-12°C         |
| Volume, gross (l)                 | 600                 | 600                 |
| Net usable volume (l)             | 415                 | 420                 |
| Outside dimensions W x D x H (mm) | 654 x 830 x 2000    | 654 x 830 x 2000    |
| Weight (kg)                       | 123                 | 123                 |
| Weight, packed (kg)               | 133                 | 133                 |
| Refrigeration capacity at -10°C   | 425 W (-30° / +45°) | -                   |
| Refrigeration capacity at -25°C   | -                   | 606 W (-30° / +45°) |
| Connection                        | 230V / NPE 50 Hz    | 230V / NPE 50 Hz    |
| Connection load (Watt)            | 650                 | 650                 |
| Energy efficiency class           | C                   | D                   |
| Energy consumption (kWh/24h)      | 1.5                 | 5.949               |
| Sound level db (A)                | 54                  | 54                  |
| Climate class                     | 5                   | 5                   |
| GWP                               | 3                   | 3                   |
| Refrigerant                       | R290                | R290                |
| Number of shelves                 | 4                   | 4                   |
| Maximum number of shelves         | 22                  | 22                  |

### ACCESSORIES

|           |  |
|-----------|--|
| 760660009 | Shelf grey with back guard for GN 2/1 cabinets excl. rail  |
| 760660013 | Shelf stainless steel with back guard for GN 2/1 cabinets excl. rail   |
| 760660442 | Shelf grey for GN 2/1 cabinets excl. rail (bottom)   |
| 760660437 | Shelf stainless steel with back guard for GN 2/1 cabinets excl. rail (bottom)                                |
| 760660444 | Set of shelves (3 top+1 bottom) stainless steel with back guard for GN 2/1 cabinets excl. rail (single door) |
| 760660118 | Set of 4 stainless steel legs 130-180 mm   |
| 760660022 | Set of 4 castors for cabinets  |
| 760660430 | Master key   |

### HIGHLIGHTS

- Removable gaskets
- Monoblock
- Rounded edges inside
- Airflow guide
- Low sound level
- Right hand hinged reversible door
- Door lock
- Self-closing door
- 4 grey shelves
- LED lighting
- Legs, H = 130-180mm
- Interior/ Exterior: AISI 430 stainless steel



→ADVANCE

# 140



2/1 GN



|                                   | ADVANCE K 140-4 L   | ADVANCE F 140-4 L   |
|-----------------------------------|---------------------|---------------------|
| Item number                       | <b>131141070</b>    | <b>133141070</b>    |
| Temperature range                 | +0°C/+10°C          | -25°C/-12°C         |
| Volume, gross (l)                 | 1200                | 1200                |
| Net usable volume (l)             | 797                 | 797                 |
| Outside dimensions W x D x H (mm) | 1344 x 830 x 2000   | 1344 x 830 x 2000   |
| Weight (kg)                       | 177                 | 177                 |
| Weight, packed (kg)               | 192                 | 192                 |
| Refrigeration capacity at -10°C   | 632 W (-30° / +45°) | -                   |
| Refrigeration capacity at -25°C   | -                   | 673 W (-30° / +45°) |
| Connection                        | 230V / NPE 50 Hz    | 230V / NPE 50 Hz    |
| Connection load (Watt)            | 270                 | 700                 |
| Energy efficiency class           | C                   | D                   |
| Energy consumption (kWh/24h)      | 2.54                | 10.6                |
| Sound level db(A)                 | 53                  | 58                  |
| Climate class                     | 5                   | 5                   |
| GWP                               | 3                   | 3                   |
| Refrigerant                       | R290                | R290                |
| Number of shelves                 | 8                   | 8                   |
| Maximum number of shelves         | 22 x 2              | 22 x 2              |

#### ACCESSORIES

|           |  |
|-----------|--|
| 760660009 | Shelf grey with back guard for GN 2/1 cabinets excl. rail  |
| 760660013 | Shelf stainless steel with back guard for GN 2/1 cabinets excl. rail   |
| 760660442 | Shelf grey for GN 2/1 cabinets excl. rail (bottom)   |
| 760660437 | Shelf stainless steel with back guard for GN 2/1 cabinets excl. rail (bottom)                                |
| 760660445 | Set of shelves (6 top+2 bottom) stainless steel with back guard for GN 2/1 cabinets excl. rail (double door) |
| 760660243 | Double door cabinet rail-left GN 2/1 U-shape   |
| 760660244 | Double door cabinet rail-right GN 2/1 U-shape  |
| 760660118 | Set of 4 stainless steel legs 130-180 mm   |
| 760660022 | Set of 4 castors for cabinets  |
| 760660430 | Master key   |

#### HIGHLIGHTS

- Removable gaskets
- Monoblock
- Round edges inside
- Airflow guide
- Low sound level
- 1 right hand and 1 left hand hinged door
- Door lock
- Self-closing doors
- 8 grey shelves
- LED lighting
- Legs, H = 130-180mm
- Complete wall rails, Shelf support.
- Interior/ Exterior: AISI 430 stainless steel



Hoshizaki Europe B.V.  
Headquarters Export EMENA  
Burgemeester Stramanweg 101  
1101 AA, Amsterdam  
the Netherlands  
sales@hoshizaki.nl  
+31 (0)20 691 84 99  
[www.hoshizaki-europe.com](http://www.hoshizaki-europe.com)