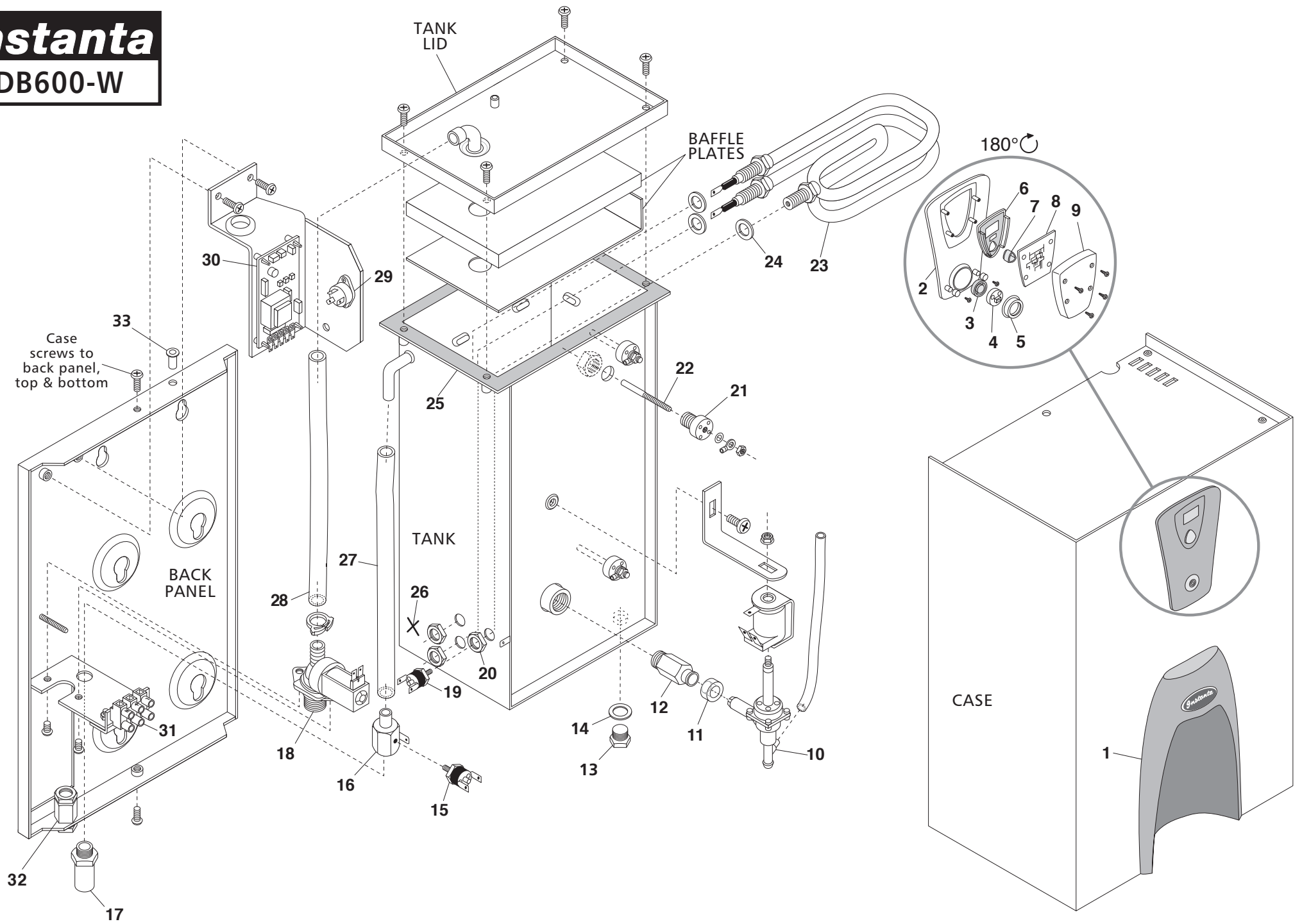


Instanta

DB600-W

D.104



DB600-W Exploded Drawing Key		
Dwg No.	Description	Part No.
1	Plastic Cup Recess Moulding	DBPLA1
2	Plastic Front Strip Moulding	DBPLA2
3	Rubber Push Button	D309/N
4	Push Button PCB	XEF403
5	Push Button PCB Retaining Ring	DBPLA3
6	Display Window	XEN613
7	Rubber On/Off button	XEN613
8	Display PCB	XEF404
9	Display Back Box	EC370/PS
10	Hot Water Outlet Solenoid	SOL24
11	Hot Water Solenoid Silicone Washer	SOL19/W
12	Brass Hot Water Solenoid Tank Adaptor	XTP1019/PB/N
13	Brass Drain Plug	WBA247/C
14	Drain Plug Washer	WBA501
15	Over-boil Thermal Cut-out	XETR7
16	Over-boil Cut-out Brass Mount	SRF25
17	Overflow Adaptor	SRF15
18	Cold Water Solenoid	SOL12
19	Boil-dry Thermal Cut-out	XETR5
20	Element Nut	T513
21	PTFE Probe Holder	E307A
22	Stainless Steel Probe	PRB1/C
23	Heating Element	XEN175
24	Heating Element Washers	XEN100/W
25	Tank Gasket	WENPB6
26	Thermistor Position on tank	XE853
27	Silicone Overflow Tube	SR2
28	Silicone Inlet Tube (Grey)	ACC309/S
29	Triac	XE851
30	Control PCB	XEF402/A
31	Terminal Block	E1254
32	Cable Gland	E316
33	Air Vent Adaptor	SRF13/V/N