

E161i INDUCTION RANGE (single phase)



SIMILAR MODELS & ACCESSORIES

E163i induction range

- Oven shelf
- Castors

KEY FEATURES

- Affordable induction model
- 6 x 1.5kW cooking zones with 3kW boost function
- Digital display shows zone heat setting
- In-built pan detection - no wasted energy
- Low heat emission
- Instant heat & precise temperature control
- 6mm toughened glass hob plate from which spillages simply wipe clean
- 2/1 gn compatible 4kW fan-assisted oven
- Oven temperature range of 100 - 250°C
- Glass panelled doors and two internal oven lights allow easy monitoring of cooking progress
- Five shelf positions, two shelves supplied
- Induction zones have 10,000 hours lifespan
- Vitreous enamelled finish makes it easy to clean oven chamber
- 2 x 32A supplies to suit kitchens with limited power

INSTALLATION NOTES

Adequate ventilation must be provided to supply sufficient fresh air and to allow easy removal of any such products that may present a risk to health. Please consult current legislation for details that relate to specific locations.

Install unit on a level, fireproof surface in a well-lit position. If floor is made of a combustible material, local fire requirements must be checked to ensure compliance.

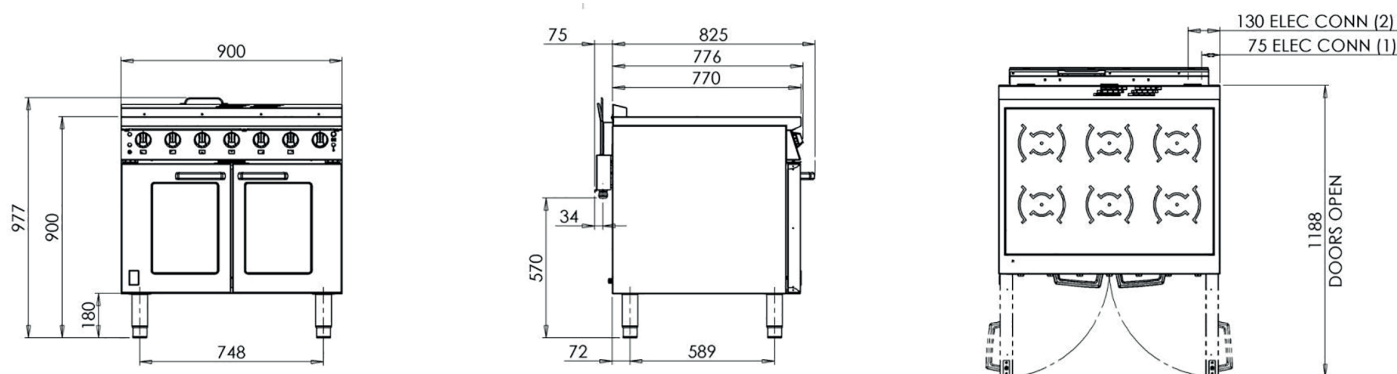
A clearance of 150mm should be observed between appliance and any combustible wall.





E161i INDUCTION RANGE

MODEL DIMENSIONS



SPECIFICATIONS

Electrical Rating (kW)	13
Electrical Supply Voltage	230V 1N~
Required Electrical Supply	2 x 32A
Electrical Current Split (amps)	Feed 1 - L: 30.4A Feed 2 - L:26.1A
Heat Zone Rating (kW)	1.5
Oven Element Rating (kW)	4
Oven Dimensions (w x d x h - mm)	700 x 535 x 430
Oven Shelf (w x d - mm)	700 x 535
Gastronorm Compatibility	2/1
Weight (kg)	116
Packed Weight (kg)	137

Falcon Foodservice Equipment, Wallace View, Hillfoots Road, Stirling, FK9 5PY, Scotland

t: +44 (0) 1786 455 200 info@falconfoodservice.com

www.falconfoodservice.com

ONE01-1219