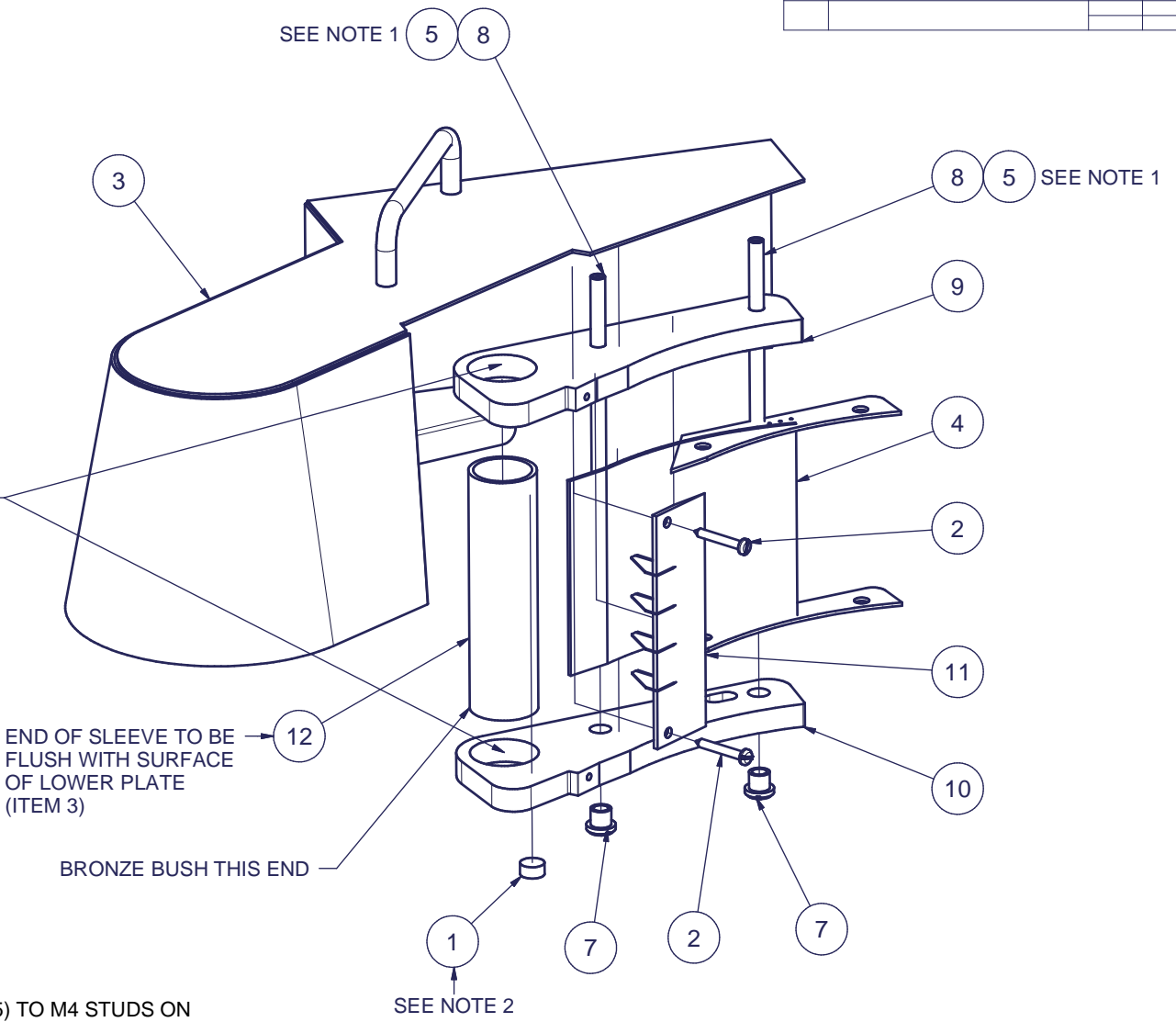
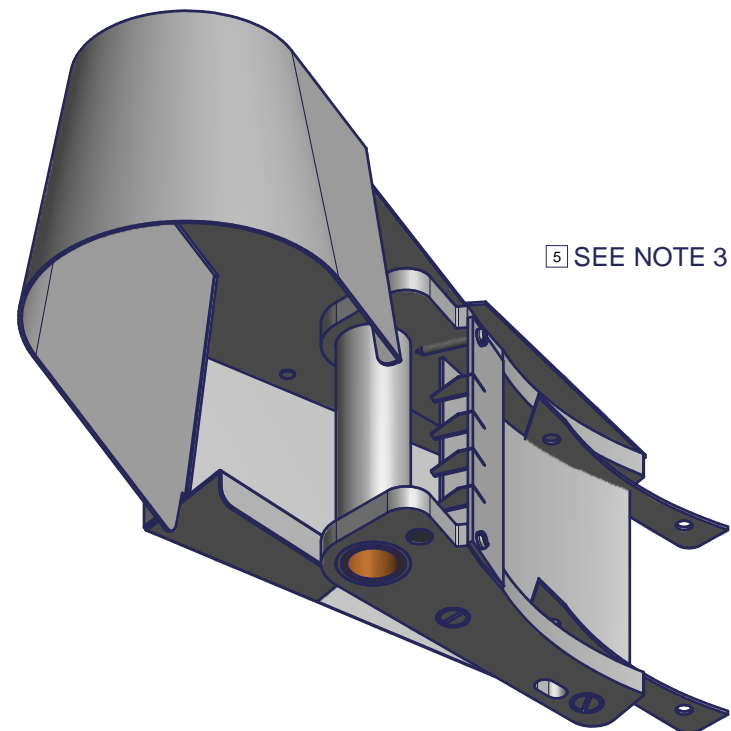


REMOVE ALL BURRS AND SHARP EDGES

ISS.	DESCRIPTION	DRAWN	CHK'D	APPRO
		DATE	DATE	DATE
4	REDRAWN ECN 7507	RH	RH	CJ
5	ECN 8050	JPJ	AJB	SJW
		13/07/2010	15/07/2010	15/07/2010
		17/09/2014	26/09/2014	26/09/2014

PARTS LIST			
ITEM	PART NUMBER	QTY	DESCRIPTION
1	A31/005	1	MAGNET 10 X 5L
2	D22/060	2	NO 6 X 1IN SELF TAPPING SCREW
3	E61/032	1	KNIFE BLOCK CARRIER
4	E61/038	1	14MM RUN IN BLOCK ASSY
5	K09/029	A/R	LOCTITE 270 STUDLOCK
6	K09/104	1	CYANOACRYLATE ADHESIVE
7	L61/007	2	SLOTTED FIXING NUTS
8	L61/016	2	CLAMPING STUD
9	M61/001 M1	1	UPPER PLATE MACHINED
10	M61/002 M1	1	LOWER PLATE MACHINED
11	S61/128	1	17MM KNIFE PACK
12	S61/180	1	KNIFE BLOCK SLEEVE-PC2-CSC1



NOTES:

1. APPLY A DROP OF LOCTITE 270 (ITEM 5) TO M4 STUDS ON CARRIER (ITEM 3) TO SECURE CLAMPING STUDS (ITEM 8)
2. PRESS MAGNET (ITEM 1) INTO LOCATING HOLE IN LOWER PLATE MOULDING (ITEM 10)
3. APPLY K09/104 (ITEM 6) TO UPPER (ITEM 9) AND LOWER PLATE (ITEM 10)

APPROVED	CJ
	15/07/2010
CHECKED	RH
	15/07/2010
DRAWN	RH
	13/07/2010

TOLERANCES UNLESS OTHERWISE STATED	TITLE
DECIMALS ± 0.25	14x17mm KNIFE BLOCK ASSEMBLY PC2
ANGLES ± 0°30'	MATERIAL
	SEE PARTS LIST
DIMENSIONS IN mm	FINISH
SCALE 0.5	CLEAN

imc
Imperial Machine Company Ltd

THE INFORMATION CONTAINED HEREIN MUST NOT BE COPIED NOR DISCLOSED IN WHOLE OR PART TO ANY THIRD PARTY WITHOUT THE WRITTEN PERMISSION OF IMC.

DRAWING NUMBER	SHEET
S61/115	1 OF 1
	A3