

# E163i INDUCTION RANGE



## SIMILAR MODELS & ACCESSORIES

E161i induction range

- Oven shelf
- Castors

## KEY FEATURES

- Affordable induction model
- 6 x 1.85kW cooking zones with 3kW boost function
- Digital display shows zone heat setting
- In-built pan detection - no wasted energy
- Low heat emission
- Instant heat & precise temperature control
- 6mm toughened glass hob plate from which spillages simply wipe clean
- 2/1 gn compatible 6.4kW fan-assisted oven
- Oven temperature range of 100 - 250°C
- Glass panelled doors and two internal oven lights allow easy monitoring of cooking progress
- Five shelf positions, two shelves supplied
- Induction zones have 10,000 hours lifespan
- Vitreous enamelled finish makes it easy to clean oven chamber

## INSTALLATION NOTES

*Adequate ventilation must be provided to supply sufficient fresh air and to allow easy removal of any such products that may present a risk to health. Please consult current legislation for details that relate to specific locations.*

*Install unit on a level, fireproof surface in a well-lit position. If floor is made of a combustible material, local fire requirements must be checked to ensure compliance.*

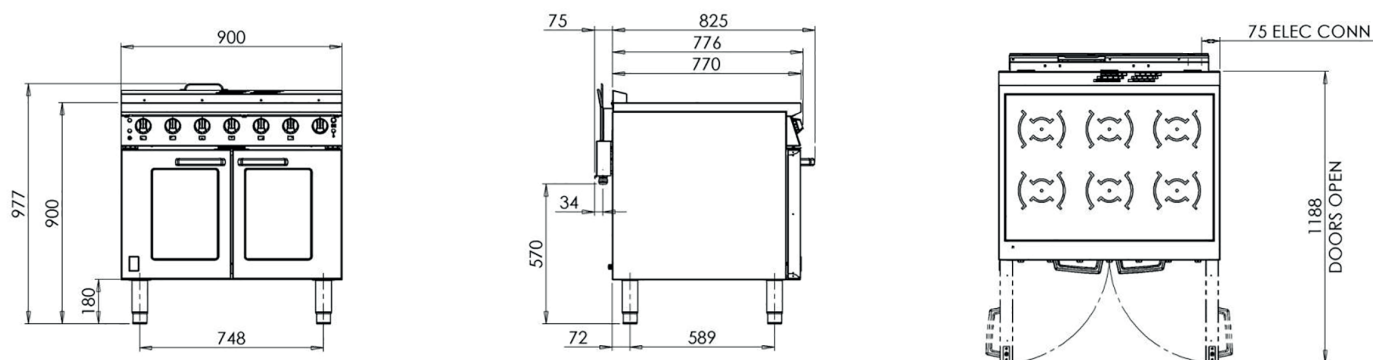
*A clearance of 150mm should be observed between appliance and any combustible wall.*





# E163i INDUCTION RANGE

## MODEL DIMENSIONS



## SPECIFICATIONS

Electrical Rating (kW)	16
Electrical Supply Voltage	400V 3N~
Required Electrical Supply	32A
Electrical Current Split (amps)	L1:30A L2: 30A L3: 16.1A
Heat Zone Rating (kW)	1.85
Oven Element Rating (kW)	6.4
Oven Dimensions (w x d x h - mm)	700 x 535 x 430
Oven Shelf (w x d - mm)	700 x 535
Gastronorm Compatibility	2/1
Weight (kg)	116
Packed Weight (kg)	137

Falcon Foodservice Equipment, Wallace View, Hillfoots Road, Stirling, FK9 5PY, Scotland

t: +44 (0) 1786 455 200 info@falconfoodservice.com

[www.falconfoodservice.com](http://www.falconfoodservice.com)

ONE02-1219