

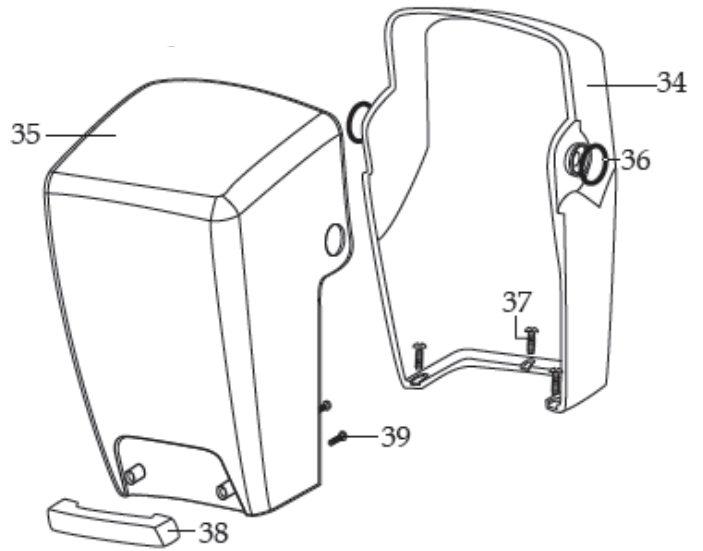
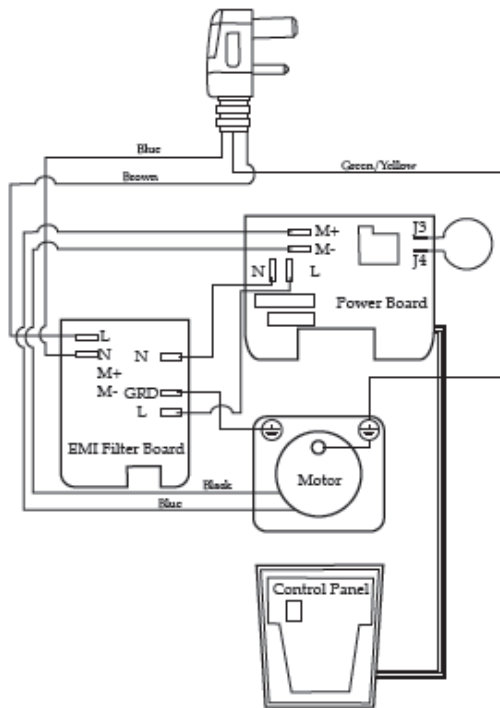


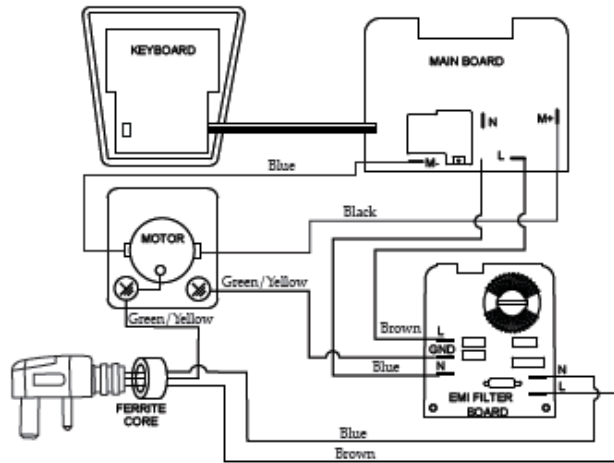
Machine	Explode	Code	Description
Waring Xtreme Hi-Power Blender	1		Jar Lid Cover
Waring Xtreme Hi-Power Blender	2		Jar Lid
Waring Xtreme Hi-Power Blender	3		Jar ONLY (64 oz. stackable Raptor)
Waring Xtreme Hi-Power Blender	3		Jar with Blending Assembly
Waring Xtreme Hi-Power Blender	4		Blade Assembly
Waring Xtreme Hi-Power Blender	5		Bearing Holder O Ring
Waring Xtreme Hi-Power Blender	6		Nut Gasket
Waring Xtreme Hi-Power Blender	7		Bearing Holder Nut
Waring Xtreme Hi-Power Blender	8	AC930	Drive Clutch
Waring Xtreme Hi-Power Blender	9		Jar Pad
Waring Xtreme Hi-Power Blender	10	AD759	Sound Enclosure Jar Pad
Waring Xtreme Hi-Power Blender	11	AC931	Motor
Waring Xtreme Hi-Power Blender	12		Dampening Plate Gasket
Waring Xtreme Hi-Power Blender	13		MX Housings, Ferrite Core & Cord
Waring Xtreme Hi-Power Blender	13		Black Top Housing (older units)
Waring Xtreme Hi-Power Blender	14		Motor Foam (2 required)
Waring Xtreme Hi-Power Blender	15		Dampening Plate Bushing (4 required)
Waring Xtreme Hi-Power Blender	16		Dampening Plate Sleeve (4 required)
Waring Xtreme Hi-Power Blender	17		Washer (2 required)
Waring Xtreme Hi-Power Blender	18		Screw (4 required)
Waring Xtreme Hi-Power Blender	19	WA355	Soft Start Control Panel
Waring Xtreme Hi-Power Blender	20		Housing Foam Rear Baffle
Waring Xtreme Hi-Power Blender	21		Housing Foam Front Baffle
Waring Xtreme Hi-Power Blender	22		MX Housings, Ferrite Core & Cord
Waring Xtreme Hi-Power Blender	22		Motor Housing (older units)
Waring Xtreme Hi-Power Blender	23		Bottom Housing Foam Baffle
Waring Xtreme Hi-Power Blender	24		Washer (3 required)
Waring Xtreme Hi-Power Blender	25		Foam Baffle
Waring Xtreme Hi-Power Blender	26		Cable Tie (3 required)
Waring Xtreme Hi-Power Blender	27		MX Housings, Ferrite Core & Cord
Waring Xtreme Hi-Power Blender	27	AC934	Cord Set (older units)
Waring Xtreme Hi-Power Blender	28		Strain Relief
Waring Xtreme Hi-Power Blender	29		MX Housings, Ferrite Core & Cord
Waring Xtreme Hi-Power Blender	29		Black Bottom Housing (older units)
Waring Xtreme Hi-Power Blender	30		Screw (4 required)
Waring Xtreme Hi-Power Blender	31		Corner Post (4 required)
Waring Xtreme Hi-Power Blender	32		Screw (4 required)
Waring Xtreme Hi-Power Blender	34	WA329	64 oz. Inner Enclosure
Waring Xtreme Hi-Power Blender	35		64 oz. Outer Enclosure
Waring Xtreme Hi-Power Blender	36		O Ring (2 required)
Waring Xtreme Hi-Power Blender	37	AC937	Screw (3 required)
Waring Xtreme Hi-Power Blender	38		Sound Enclosure Handle
Waring Xtreme Hi-Power Blender	39		Screw (2 required)
Waring Xtreme Hi-Power Blender	033484	033484	Brush Spring (2 required)
Waring Xtreme Hi-Power Blender	503351		MX coupling Wrench optional
Waring Xtreme Hi-Power Blender	030889	AE166	Blending Assy kit
Waring Xtreme Hi-Power Blender	032761		MX jar Wrench
Waring Xtreme Hi-Power Blender	502962		SE1000 – Sound Enclosure
Waring Xtreme Hi-Power Blender	Not shown	AC929	Polycarbonate Jar with Blending Ass’y - 48oz



SE1000 - 502962 (64 oz.)



Wiring Diagram
(older units)



Wiring Diagram