



C O M M E R C I A L

Tested.Proven.

40/60-CUP RICE COOKER

Operation Manual –
Page 2

CUISEUR POUR LE RIZ DE 40/60 TASSES

Manuel d'utilisation –
Page 7

ARROCERA PARA 40/60 TAZAS

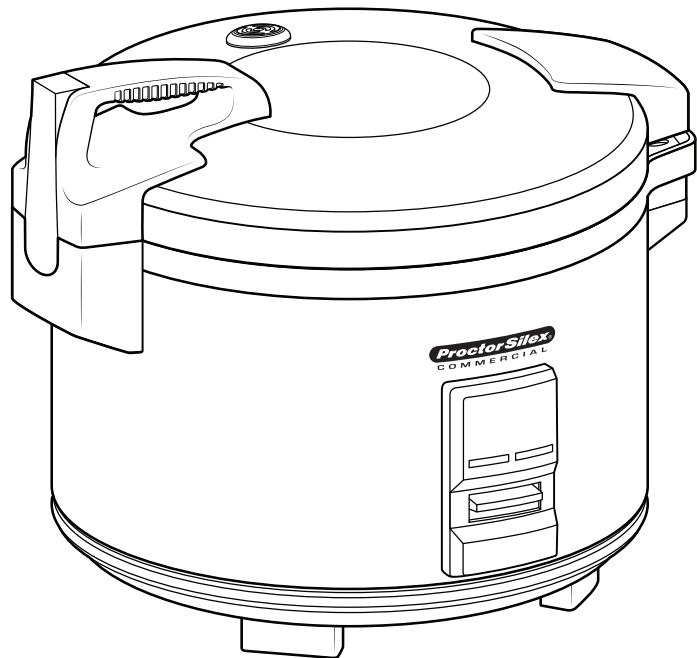
Manual de Operación –
Pagina 13

READ BEFORE USE.

LIRE AVANT D'UTILISER.

LEA ANTES DE USAR.

Le invitamos a leer cuidadosamente este
instructivo antes de usar su aparato.



**37540 (TYPE GR04),
37560R (TYPE GR05) Series**

840241201

7/14

For more Good Thinking® visit www.commercial.hamiltonbeach.com

Rice Cooker Safety

IMPORTANT: This operation manual should be reviewed with all equipment operators as part of your operator training program.

Your safety and the safety of others is very important.

We have provided many important safety messages in this manual and on your appliance. Always read and obey all safety messages.



This is the safety alert symbol.

This symbol alerts you to hazards that can kill or hurt you and others.

All safety messages will be preceded by the safety alert symbol and the word "WARNING."

This word means:

⚠ WARNING

You can be killed or seriously injured if you don't follow instructions.

All safety messages will identify the hazard, tell you how to reduce the chance of injury, and tell you what can happen if the instructions are not followed.

⚠ WARNING



Electrical Shock Hazard

Plug into a grounded outlet.

Do not remove ground.

Do not use an adapter.

Failure to follow these instructions can result in death, fire, or electrical shock.

⚠ WARNING



Burn Hazard

Never use lid handle to carry cooker when contents are hot.

Failure to follow these instructions can result in burns or serious injury.

For Commercial Use Only

Rice Cooker Safety

IMPORTANT SAFETY INSTRUCTIONS

WARNING – When using electrical appliances, basic safety precautions should always be followed to reduce the risk of fire, electric shock, and/or injury to persons, including the following:

1. Read all instructions.
2. This appliance is not intended for use by persons (including children) with reduced physical, sensory, or mental capabilities, or lack of experience and knowledge, unless they are closely supervised and instructed concerning use of the appliance by a person responsible for their safety.
3. Close supervision is necessary when any appliance is used by or near children. Children should be supervised to ensure that they do not play with the appliance.
4. Do not touch hot surfaces. Use handles or knobs. Use pot holders when removing hot containers.
5. To protect against a risk of electrical shock do not immerse cord, plug, or base in water or other liquid.
6. Unplug from outlet when not in use. Unplug before putting on or taking off parts and allow to cool before cleaning.
7. Do not operate any appliance with a damaged cord or plug or after the appliance malfunctions, has been dropped or damaged in any manner. Call our toll-free customer service number for information on examination, repair, or adjustment.
8. The use of accessory attachments not recommended by the appliance manufacturer may cause injuries.
9. Do not use outdoors.
10. Do not let cord hang over edge of table or counter, or touch hot surfaces.
11. Do not place on or near a hot gas or electric burner, or in a heated oven.
12. Extreme caution must be used when moving an appliance containing hot food, water, or other hot liquids. Do not use lid handle to carry cooker when contents are hot.
13. To disconnect, make sure the cook switch is pushed up to the “up” position; then remove plug from wall outlet.
14. Do not use appliance for other than intended use.
15. Lift and open cover carefully to avoid scalding, and allow water to drip into the cooker.
16. **WARNING!** Risk of electric shock. Cook only in removable container.
17. Do not place the unit directly under cabinets when operating as this product produces large amounts of steam. Avoid reaching over the product when operating.

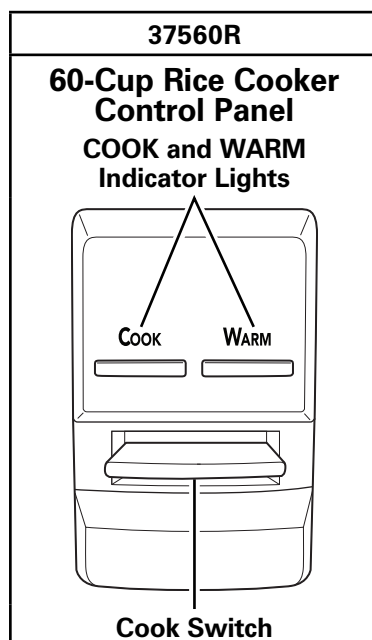
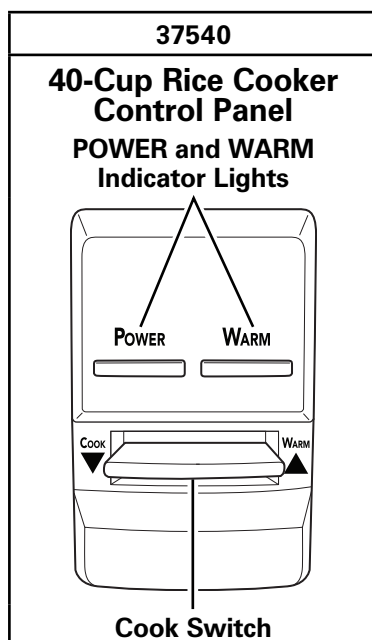
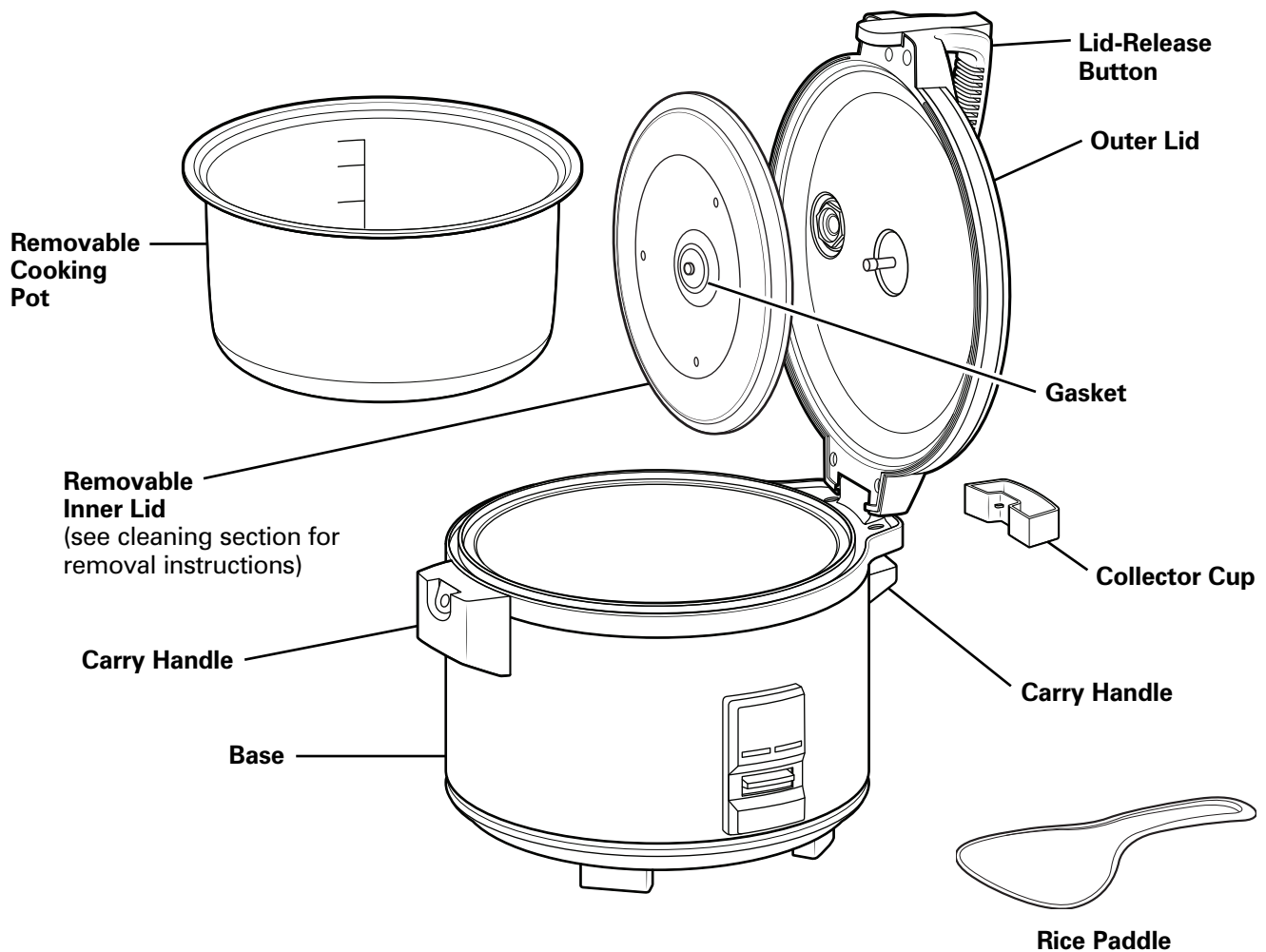
– SAVE THESE INSTRUCTIONS –

OTHER CONSUMER SAFETY INFORMATION

WARNING! Shock Hazard: This product is provided with a grounded (3-prong) plug to reduce the risk of electric shock. The plug fits only one way into a grounded outlet. Do not defeat the safety purpose of the plug by modifying the plug in any way or by using an adapter. If the plug does not fit into the outlet, have an electrician replace the outlet.

The length of the cord used on this appliance was selected to reduce the hazards of becoming tangled in or tripping over a longer cord. If a longer cord is necessary, an approved extension cord may be used. The electrical rating of the extension cord must be equal to or greater than the rating of the appliance. The extension cord must be a grounding-type, 3-wire cord. Care must be taken to arrange the extension cord so that it will not drape over the countertop or tabletop where it can be pulled on by children or accidentally tripped over.

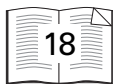
Parts and Features



Technical Services

For assistance or replacement parts, call our
Technical Services number:
866-285-1087 or ++910-693-4277

8 a.m. – 5 p.m. EST Monday – Friday
www.commercial.hamiltonbeach.com



NOTE: Clean rice cooker after each use to prevent the accumulation of dirt and debris. Sanitize daily.

Sanitizing

1. Immerse cooking pot, removable lid, rice paddle, and measuring cup in sanitizing solution for 2 minutes.
2. Allow to air dry.
3. Wipe down all areas of inner lid with a clean paper towel and sanitizing solution.
4. Rinse with clean water before using.

Recommended sanitizing solution:

The sanitizing solution should consist of 1 Tablespoon (15 ml) of bleach per 1 gallon (3.8 liters) of clean, cool water (60°F/16°C) mixed according to the instructions on the bleach.

⚠ WARNING

Electrical Shock Hazard

Cook only in removable cooking pot.

Never place water or food directly into base.

Failure to follow these instructions can result in death, fire, or electrical shock.

⚠ WARNING

Burn Hazard

Never use lid handle to carry cooker when contents are hot.

Failure to follow these instructions can result in burns or serious injury.

37540 SERIES 40-CUP	37560R SERIES 60-CUP	 STEP 1 UNCOOKED WHITE RICE	 STEP 2 FILL WATER TO LINE ON COOKING POT		YIELD (Standard 8-oz Dry Measure Cup)	 APPROXIMATE COOK TIME 40-CUP	 APPROXIMATE COOK TIME 60-CUP
			40-CUP	60-CUP			
X			5	NA	10 Cups	20–25 Minutes	NA
X	X		10	10	20 Cups	25–30 Minutes	25–30 Minutes
X	X		15	15	30 Cups	30–35 Minutes	25–30 Minutes
X	X		20	20	40 Cups	35–40 Minutes	30–35 Minutes
	X		NA	25	50 Cups	NA	40–45 Minutes
	X		NA	30	60 Cups	NA	45–50 Minutes

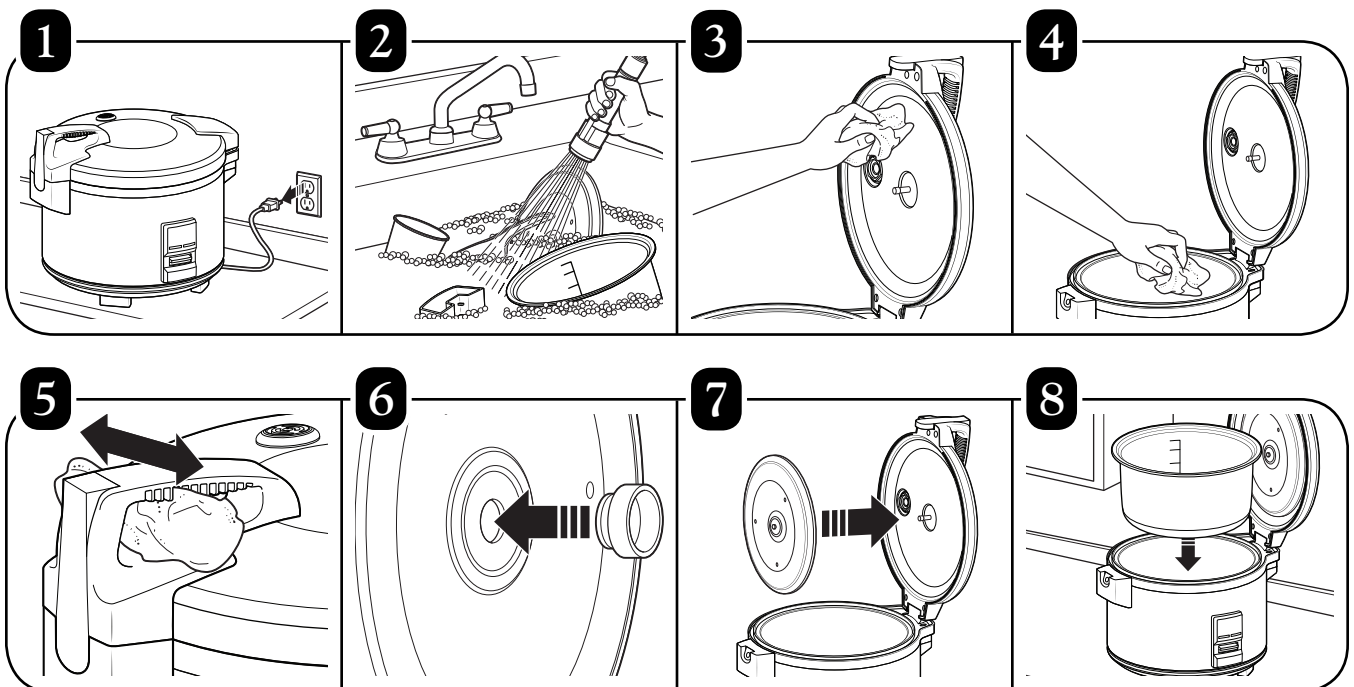
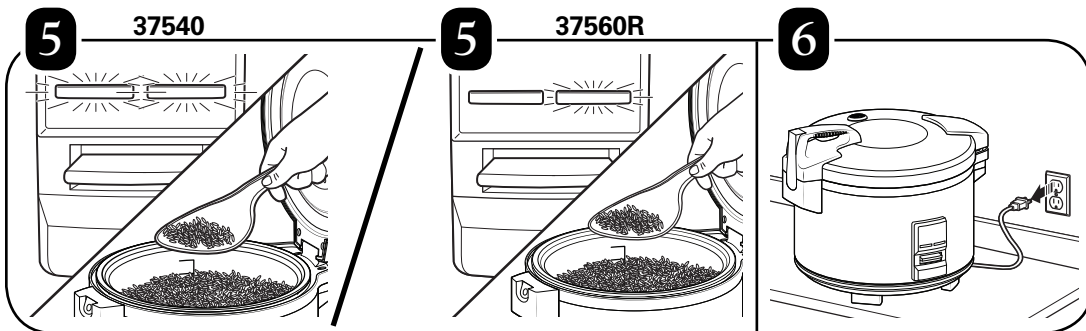
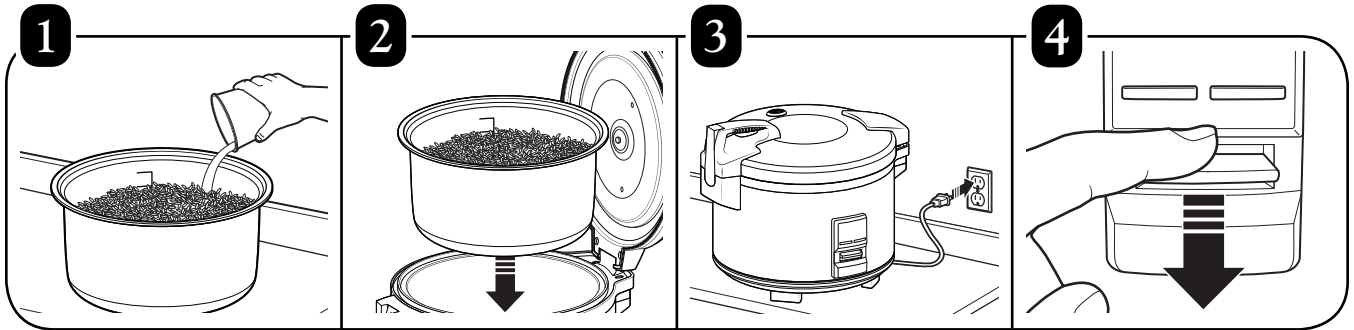
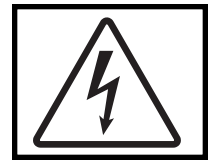
TIPS:

- Cook times and water levels will vary with other varieties of rice.
- The most important detail when cooking rice is the ratio of rice to water. Please refer to rice package directions.
- To prevent overflow and/or overheating, do not exceed the maximum fill line when both rice and water are added to cooking pot.
- When cooking oatmeal, grits, or macaroni, do not fill more than halfway since contents will expand and could boil over.
- Brown rice takes more water to cook and cooking time is longer.

Troubleshooting Guide

Problem . . .	Solution . . .
Cooker doesn't turn on.	• Cooker is not plugged in. Make sure rice cooker is plugged into a properly operating electrical outlet.
Rice is not cooked.	<ul style="list-style-type: none"> • Not enough water/cooking liquid. See Rice Cooking Chart for more information. • Carefully place cooking pot straight down in base. Make sure cooking pot is securely seated by rotating the pot left and right. NOTE: If cooking pot is bent or warped, it will not seat properly in base and, therefore, will not cook rice correctly. To replace cooking pot, call the toll-free customer assistance number listed on page 4 of this guide.
Rice is mushy.	• Too much liquid added to cooking pot. Reduce liquid.

Notes



Modelos:

37540

37560R

Tipos:

GR04

GR05

Características Eléctricas:

120 V~ 60 Hz 1250 W

120 V~ 60 Hz 1550 W

Los modelos incluidos en el instructivo de Uso y Cuidado pueden ir seguidos o no por un sufijo correspondiente a una o varias letras del alfabeto y sus combinaciones, separadas o no por un espacio, coma, diagonal, o guión.

Como ejemplos los sufijos pueden ser: "Y" y/o "MX" y/o "MXY" y/o "Z".



4421 Waterfront Drive
Glen Allen, VA 23060