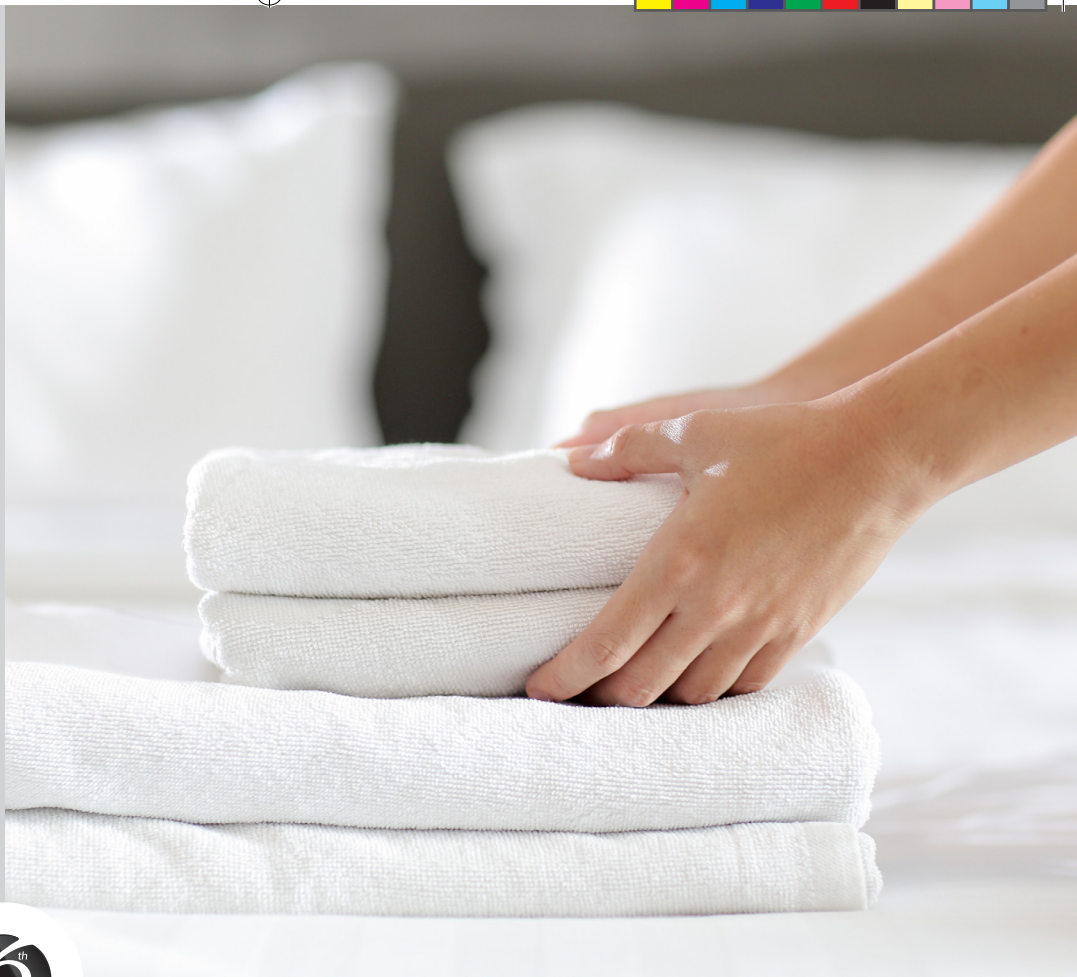





Professional laundry

Explore the
Premium Collection



Whirlpool
PROFESSIONAL
APPLIANCES





Professional Washers and Dryers

designed for long-lasting,
heavy-duty use

The Whirlpool professional range of laundry appliances addresses the needs of small and large laundry facilities.

The range consists of washing machines and tumble dryers, with either medium and large load capacity. They are designed for maximum reliability and durability, ensuring they can withstand the toughest environments.



Premium washer

*The best performance
with low consumption.*

6TH SENSE Technology

Resources saving

When it comes to daily laundry, saving energy matters. Whirlpool Professional products knows exactly how to do it, thanks to **6TH SENSE Technology** that uses sensors, a flow meter and pressure switch, to determine the exact load weight and adjust energy accordingly. In this way, the Premium washer offers an outstanding and efficient cleaning performance with great savings: up to 45% of energy*, at every wash.



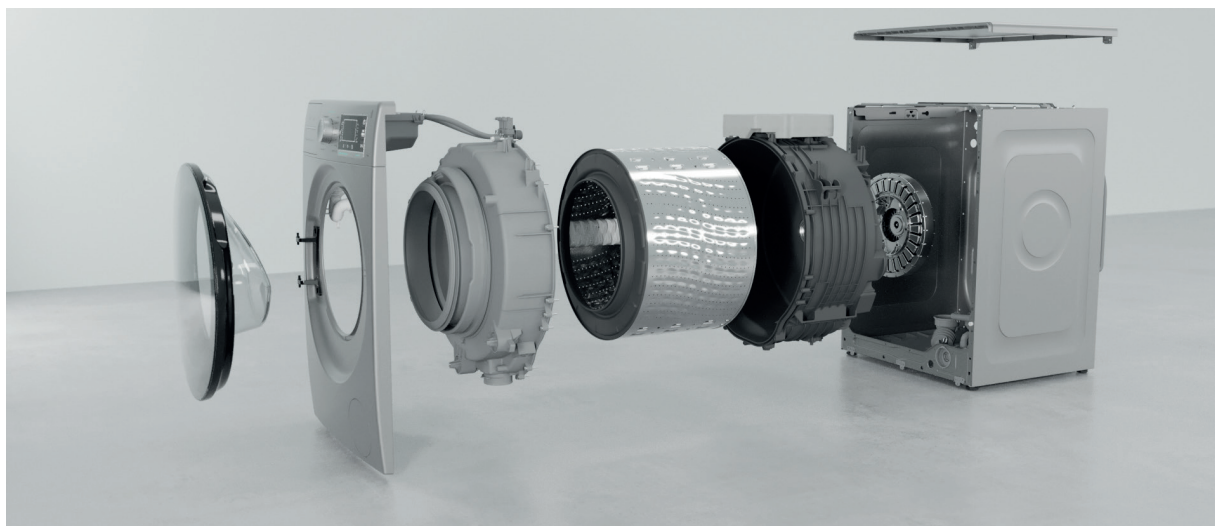
*Tested on Full Load 45 min, Cotton, Mixed and ECO 40-60 cycles with vs without 6TH Sense.





ZenMotor

Enjoy the silence



ZERO VIBRATION, ABSOLUTE SILENCE (A class noise)

The Premium washer features innovative **ZEN Motor**, which is directly attached to the drum without the traditional belt, delivering outstanding cleaning results while minimizing noise and vibrations. Thanks to the direct rotation, the set of movements determined by the load and selected program are more precise, meaning optimized energy efficiency and improved steadiness.





SteamHygiene

The best hygiene & garment treatment



Forget bacteria. Pure, perfect cleaning become effortless. When Steam Hygiene is activated, laundry get sanitized by a hot steam flow at the end of the cycle. Air at 70°C/80°C fill the drum for 30 minutes, neutralizing up to 99,9% of Bacteria with no chemicals, in a powerful and natural way.

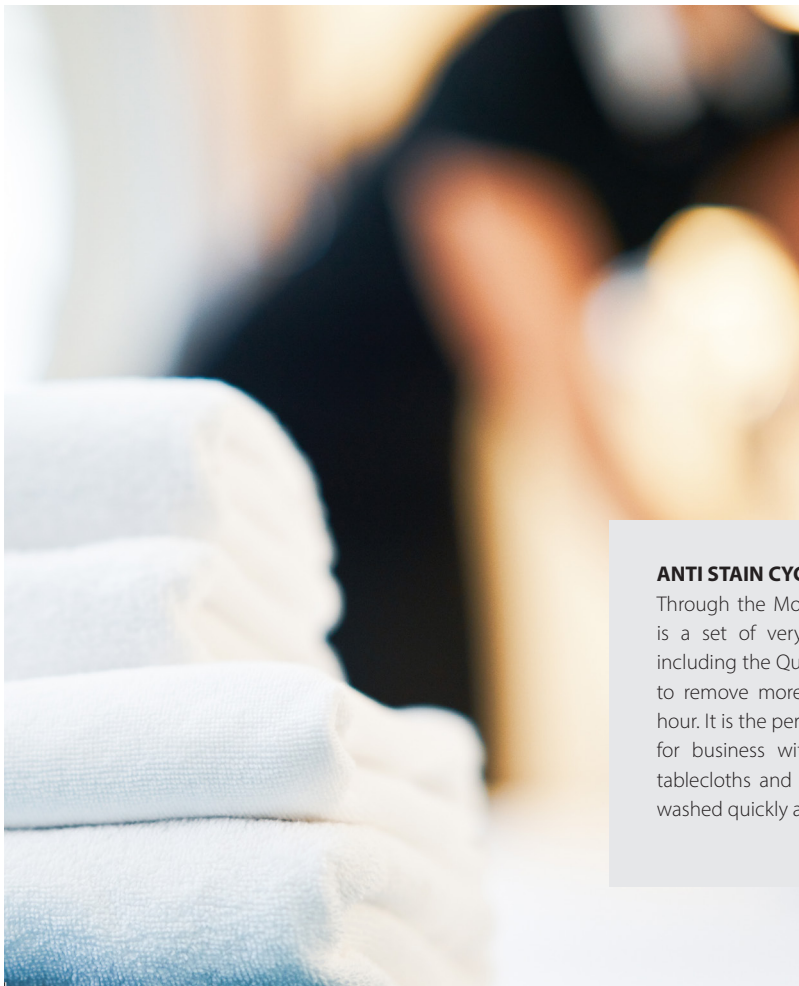
A deep sanitizing action that guarantee ultimate hygiene for the laundry. It's the optimal option for small business, such as care homes, sports and fitness club, hotels & B&B, where cleanliness and hygiene are vital to prevent contamination and the spreading of germs.



ANTI ALLERGY CYCLE

A special program that eliminate all the detergent traces and 99,99% of pollens, house dust mite, pet hair, all causes of allergies.

Ideal for environment such as care homes and nursery schools that must be always clean and safe because children are susceptible to all types of illness.



FreshCare+

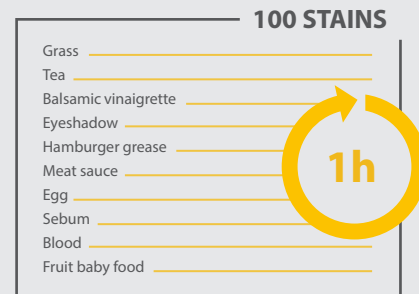
A new dimension of freshness



With the Premium washer, unloading the washer the very moment the cycle is over is no longer essential to avoid bad odours and creases: Fresh Care+ takes care of both. Once the cycle is over, a steam flow is released inside the drum, gently massaging the load with several slow bidirectional oscillations. These combines actions **keep clothes fresh** inside the washer for **up to 6 hours after the end of the cycle**, preventing the proliferation of the main odor sources.

ANTI STAIN CYCLE

Through the More Cycle selection there is a set of very specific useful cycles, including the Quick Anti Stain Cycle, able to remove more 100 stains in just one hour. It is the perfect washing programme for business with a rapid turnover of tablecloths and towels that need to be washed quickly and effectively.

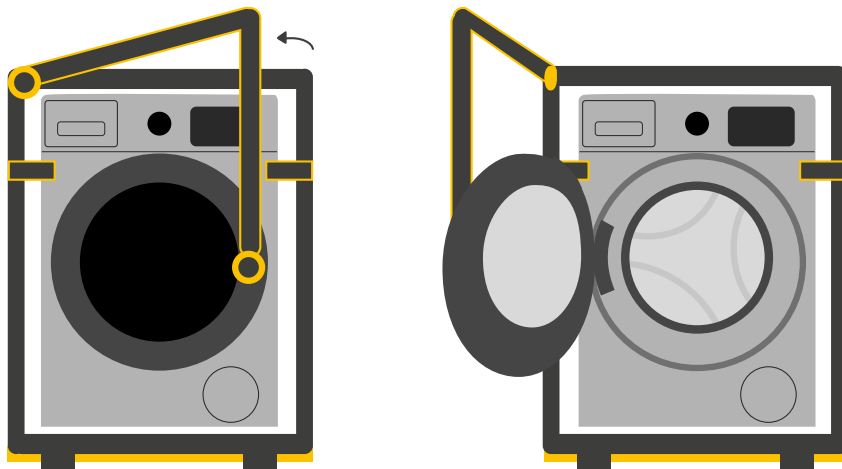


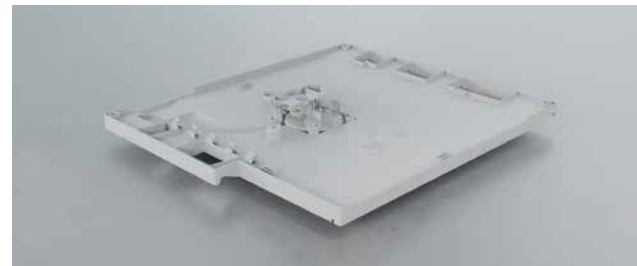
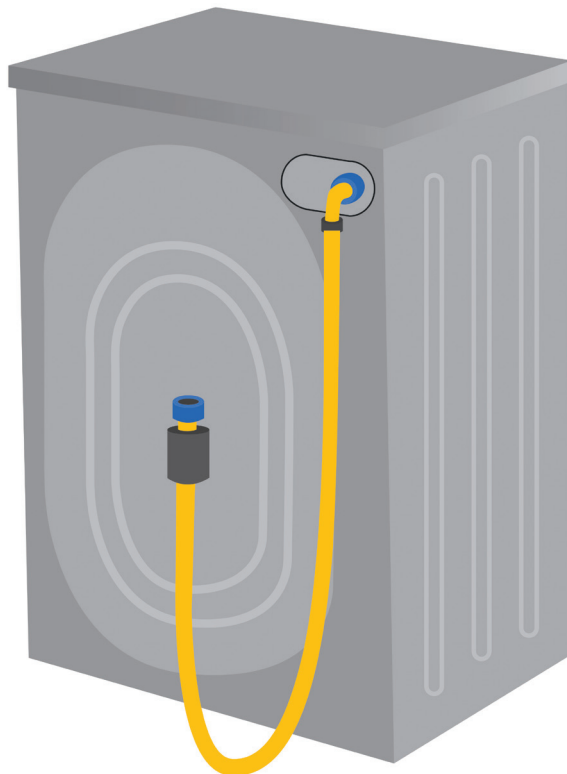
Robustness & safety

EXTRA LONG LIFETIME

STUDIED TO LAST MUCH LONGER THAN A STANDARD WASHER

Built to bear all the electrical and mechanical safety tests required by the Machinery Directive 2006/42/EN. Thanks to the sturdiness of its components, it's engineered to perform up to 5.000 cycles without any problem. The Life Cycle Test has been done with the Rinse & Spin cycle, the most stressful for the machine.





FULL AQUASTOP PROTECTION DEVICE

Equipped with the most effective anti-flooding system made of a double inlet house and a tray on the base of the machine which collects the water in case of breakage while a sensor blocks immediately the incoming water.

Extreme safety, in case of breakage there is no fear of flooding and the machine automatically stops functioning.

Premium washers



6th SENSE Technology

The intuitive sensors adapt resources according to the size and type of load, guaranteeing optimal performance while saving energy, water and time.



Zen Motor Technology

The quietest motor on the market.



Steam Refresh

A flow of steam, that lasts just 20 minutes, removes unpleasant smells and relaxes fibers.



Steam Hygiene

This treatment removes up to 99.9% of the most common bacteria.



FreshCare+

It delicately steams and gently tumbles your laundry for up to 6 hours once the washing cycle is over.



Anti Allergy Cycle

It eliminates all the detergent traces and 99,99% of pollens, house dust mite, pet hair, all causes of allergies.



Anti Stain Quick Cycle

Remove more than 100 kinds of stains at 40° without the burden of pretreatment.



AWH 912/PRO UK

Codice EAN: **8003437641510**
Dim. (A x L x P): 850x600x640 mm

- 1200rpm
- LCD display
- Chrome finishing
- Large Porthole
- Stainless Steel Drum
- Beltless Direct Drive Motor
- A Noise Class
- Child Lock
- 25 Programs (some special like Wool, Shirt, Bed&Bath, Duvet, Rapid, Pets stuff)
- Delay Timer
- Residual time indication
- Anti microbic bellow
- Full Aquastop Protection system
- Recyclability 87%
- UK Plug



MAIN FEATURES	
Product description	AWH 912/PRO UK
12NC Code	859991660650
EAN Code	8003437641510
Load Capacity (kg)	9 kg
Maximum Spin Speed (rpm)	1200 rpm
Type of Control Panel	LCD
Type of Timer	Electronic
Panel Language	Symbol/English
Main Colour of Product	White
Plug Type	UK
Drum Volume (L)	64
Type of Motor	Direct Drive
Noise Insulation	Zen Insulation
Type of Water Protection System	Full Aquastop + 1 Eltek
Heating Type	Electric
Number of Programmes	24
Drum Material	Stainless Steel
WEIGHT & DIMENSIONS	
Net Weight (kg)	80
Gross Weight (kg)	81.5
Height of the Product (mm)	850
Width of the Product (mm)	600
Depth of the Product (mm)	640
Height of the Packed Product (mm)	878
Width of the Packed Product (mm)	677
Depth of the Packed Product (mm)	699
TECHNICAL DATA	
Voltage (V)	220-240V
Frequency (Hz)	50 Hz
Connection Rating (W)	1700
Water Consumption Eco Programme per cycle (Lt)	46
Remainig moisture %	53
Noise Level Spinning (dB(A) re 1 pW)	71 dB(A)
Noise Level Washing (dB(A) re 1 pW)	48 dB(A)
Noise Class	A
Energy Efficiency Class	B
Spin Drying Efficiency Class	B





Professional dryers

Experience the next level of precise drying.

The new Supreme Care Professional Dryers combine the energy saving efficiency of the heat pump technology with the long-lasting durability for the commercial usage.



3Dry Technology

Bulky items evenly dried



The 3Dry Technology allows a **unique three dimensional air distribution**, reaching every inch of the drum. The hot air enters both from the holes in the back of the drum and the holes on the lifters, ensuring a more powerful heat distribution. From today, uniform drying of bulky items such as bed linen is guaranteed with no more wet zones.

An eco-friendly solution

The heat pump reaches the energy efficiency a++



Thanks to the Sense Inverter Motor and the heat pump technology, the new Professional Supreme Care Dryers assure the **max energy efficiency without compromising the drying results**. To dry a full load with cotton cupboard dry, you can **save up to 60% kWh than a condenser standard**.





FreshCare+

Freshness and softness for up 6 hours

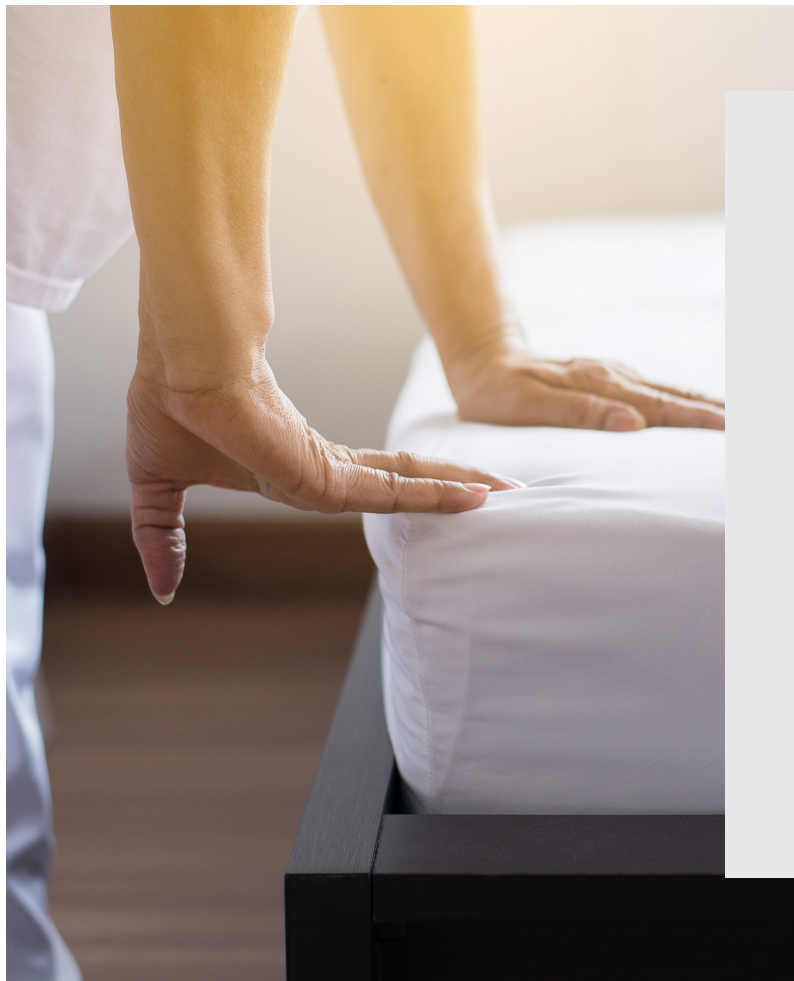


Fresh Care+ is the solution to keep the garments fresh and soft inside the drum **for up to 6 hours after the cycle ends**, avoiding the creation of bad smells and preventing from any folds, thanks to the ideal temperature condition kept inside of the drum for long, together with the delicate tumbling action. This technology allows consumers to unload the dryer whenever they need.



THE BEAUTY OF THE WOOL ALWAYS PRESERVED AT BEST

A delicate drying cycle that **respects the beauty of the finest woolen garments**, maintaining them soft and smooth as new. It gently dries garments labeled "hand wash". Thanks to the **Sense Inverter Motor**, that enables the satellization phase at the end of the cycle, the clothes cling to the side of the drum, so their fibres are protected from chafing and felting. The cycle is endorsed by the Woolmark Company and gained the prestigious **Woolmark Blue certification**.

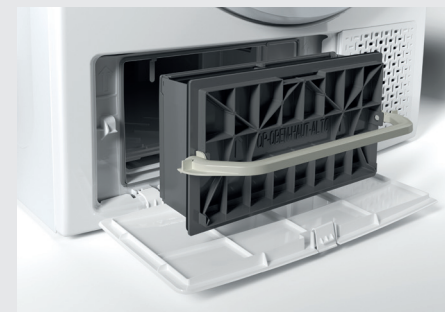


Easy-Cleaning filter

Cleaning the filter has never been so easy



A little filter collects the fluff in the condensation area, making the cleaning operation easier than ever. It takes just 3 little steps: open the filter, pull the ergonomic handle to extract it and clean it. **The dryer will work for longer at its best.**



Premium dryers



6th SENSE Technology

The intuitive sensors adapt resources according to the size and type of load, guaranteeing optimal performance while saving energy, and time.



6th SENSE 3Dry Technology

Soft air for powerful and delicatedrying.



Soft Move

Customised drum movement for a tailored care of your garments.



FreshCare+

Keep your garments fresh up to 6 hours after the cycle is over.



Woolmark Blue Certification

The beauty of wool always preserved.



Easy Cleaning Filter

Easily remove and clean the filter in only three simple steps.



AWZ 9HP/PRO UK

Codice EAN: **8003437609794**
Dim. (AxLxP): 849x595x656 mm

- 9 kg
- Heat pump
- Stainless Steel Drum
- Insulation package
- Wide Door opening
- Inverter Motor
- Digit user interface
- 18 Cycles
- 8 Options



AWZ 8HP/PRO UK

Codice EAN: **8003437609787**
Dim. (AxLxP): 849x595x656 mm

- 8 kg
- Heat pump
- Stainless Steel Drum
- Insulation package
- Wide Door opening
- Inverter Motor
- Digit user interface
- 18 Cycles
- 8 Options

MAIN FEATURES		
Product description	AWZ 9HPS/PRO	AWZ 8HPS/PRO
12NC Code	859991599600	859991599590
EAN Code	8003437609770	8003437609763
Loading Capacity (kg)	9 kg	8 kg
Drying Technology	Heat Pump	Heat Pump
Type of Control Panel	Digit	Digit
Type of Timer	Electronic	Electronic
Panel Language	Symbols	Symbols
Main Colour of Product	Silver	Silver
Plug Type	Schuko	Schuko
Drum Volume (L)	120	120
Type of Motor	Inverter	Inverter
Noise Insulation	Yes	Yes
Bottle	Top	Top
Condensation Efficiency	B	B
Number of Programmes	18	18
WEIGHT & DIMENSIONS		
Net Weight (kg)	44	44
Gross Weight (kg)	46.5	46.5
Height of the Product (mm)	849	849
Width of the Product (mm)	595	595
Depth of the Product (mm)	656	656
Height of the Packed Product (mm)	872	872
Width of the Packed Product (mm)	655	655
Depth of the Packed Product (mm)	693	693
TECHNICAL DATA		
Electrical Connection Rating (W)	850 W	850 W
Voltage (V)	220-240V	220-240V
Frequency (Hz)	50 Hz	50 Hz
Current (A)	10 A	10 A
Door Hinge	Right	Right
Noise Level (dB(A) re 1 pW)	64	64
Drum Material	Stainless Steel	Stainless Steel
Average Drying Time cotton cupboard dry 50% moisture (1400rpm spinning)	211 min	194 min
Average Drying Time synthetics cupboard dry 50% moisture (1000rpm spin speed)	95 min	95 min
Energy Consumption kWh cotton cupboard dry 50% moisture (1400rpm spinning)	2.07 kWh	1.78 kWh
Energy Consumption kWh synthetics cupboard dry 50% moisture (1000rpm spinning)	0.73 kWh	0.73 kWh
Energy Efficiency Class - NEW (2010/30/EU) (1000rpm spinning)	A++	A++









Whirlpool
PROFESSIONAL
APPLIANCES