



Merchandiser Solutions

*Cafeterias • Convenience Stores
Supermarkets & Delis • Restaurants & Cafés
Clubs & Bars • Catering • Concessions*



GRSDS/H-41D pg. 2



GRSDS-30D pg. 3



GR2SDS-48D with standard *Designer Black* inset panels pg. 5



HXMS-36D in standard *Designer Black* with optional red LED accent lighting in support posts pg. 7



GRCMW-1 & GRCMW-1D in optional *Bermuda Sand* simulated stone pg. 10



GRCD-2PD in optional *Designer Hunter Green* with accessory food pans and optional pan rail pg. 11



Glo-Ray® Merchandising Warmers

Designed with both a slanted and horizontal shelf, Glo-Ray® Merchandising Warmers offer the convenience of customer self-serve with the efficiency of preparing product in advance, and holding for peak serving periods.

- Warmer includes a slant and horizontal shelf for merchandising a variety of products like popcorn on the top shelf and nachos, boxed pizza or wrapped food on the bottom
- Standard Indicating Temperature Control (ITC) enhances accuracy and provides digital readout of temperatures
- Thermostatically-controlled hardcoated heated base to extend holding times
- Pre-focused infrared top heat directs heat to the outer edges where heat loss is greatest
- Product divider rods and 102 mm legs included
- Shatter-resistant incandescent lights illuminate the holding areas and emphasize the product



GRSDS/H-36D with slant and horizontal shelves and optional 381 mm clearance for top shelf



GRSDS/H-41D with slant and horizontal shelves

SLANT/HORIZONTAL DISPLAY WARMERS – DUAL SHELVES – TOP AND BASE HEAT

Model	No. of Bulbs, Divider Rods	Dimensions W x D x H	Voltage		Ship Weight
			Single Phase	Watts	
GRSDS/H-36D	4, 14	914 x 616 x 851 mm	240	1810	72 kg
GRSDS/H-41D	6, 16	1041 x 616 x 851 mm	240	2120	81 kg

All Slant/Horizontal Display Warmer Models Feature:
Cord Location: 1829 mm. Control side at right base corner.

OPTIONS (available at time of purchase only)

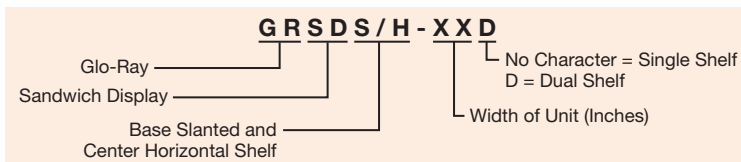
Designer Colors – Non-standard colors are non-returnable – Glossy Gray Standard –

RED	Warm Red
BLACK	Black
GRAY	Gray Granite
WHITE	White Granite
NAVY	Navy Blue
GREEN	Hunter Green
COPPER	Antique Copper
15SPACE	381 mm clearance for top shelf in lieu of standard 305 mm

ACCESSORIES

GRSDS-DIV	Additional Stainless Steel Divider Rods (bottom shelf only)
GRSDH-DIV	Additional Stainless Steel Divider Rods (top shelf only)

COLORS AND FINISHES – PAGE 15



Glo-Ray® Merchandising Warmers

Designed specifically for showcasing wrapped or boxed product, the Hatco Glo-Ray® Merchandising Warmers hold hot food safely at proper serving temperatures. These warmers offer the convenience of self-serve and the efficiency of kitchen-to-server.

- Available in single- or two-tier models
- Horizontal or slant shelves
- Product divider rods sort food displays
- Thermostatically-controlled hardcoated heated base, with a temperature range of 85°-93°C, to extend holding times
- Pre-focused infrared top heat directs heat to the outer edges where heat loss is greatest
- Shatter-resistant incandescent lights illuminate the holding areas and emphasize the product



GRSDH-30 with a single horizontal shelf



GRSDS-24D with dual slanted shelves and optional sign holders (signs not included)

HORIZONTAL DISPLAY WARMERS

Model	No. of Bulbs, Divider Rods	Dimensions (W x D x H) <i>Height includes legs</i>	Voltage Single Phase	Usable Heated Shelf Space W x D	Watts	Ship Weight
Single Shelf						
GRSDH-30	2, 6	762 x 495 x 303 mm	240	730 x 419 mm	1060	25 kg
GRSDH-36	2, 7	914 x 495 x 303 mm	240	882 x 419 mm	1278	30 kg
GRSDH-41	3, 8	1041 x 495 x 379 mm	240	1009 x 419 mm	1469	34 kg
GRSDH-52	4, 10	1321 x 495 x 379 mm	240	1289 x 419 mm	1912	39 kg
GRSDH-60	5, 12	1524 x 495 x 379 mm	240	1492 x 419 mm	2180	60 kg
Dual Shelf						
GRSDH-30D	4, 12	762 x 495 x 643 mm	240	730 x 419 mm	2120	45 kg
GRSDH-36D	4, 14	914 x 495 x 643 mm	240	882 x 419 mm	2556	54 kg
GRSDH-41D	6, 16	1041 x 495 x 643 mm	240	1009 x 419 mm	2928	62 kg
GRSDH-52D*	8, 20	1321 x 495 x 643 mm	240	1289 x 419 mm	3824	78 kg
GRSDH-60D*	10, 24	1524 x 495 x 643 mm	240	1492 x 419 mm	4360	89 kg

* No cap.

All Horizontal Display Warmer Models Feature:

Cord Location: 1829 mm. Left rear corner toward server side.

SLANT DISPLAY WARMERS

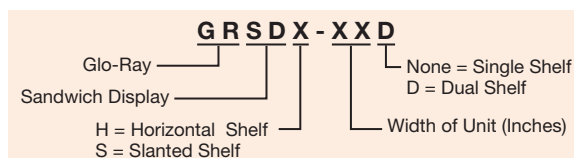
Model	No. of Bulbs, Divider Rods	Dimensions (W x D x H) <i>Height includes legs</i>	Voltage Single Phase	Usable Heated Shelf Space W x D	Watts	Ship Weight
Single Shelf						
GRSDS-24	2, 5	610 x 616 x 469 mm	240	572 x 533 mm	749	36 kg
GRSDS-30	2, 6	762 x 616 x 469 mm	240	724 x 533 mm	870	36 kg
GRSDS-36	2, 7	914 x 616 x 545 mm	240	876 x 533 mm	1030	42 kg
GRSDS-41	3, 8	1041 x 616 x 545 mm	240	1003 x 533 mm	1195	44 kg
GRSDS-52	4, 10	1321 x 616 x 545 mm	240	1283 x 533 mm	1520	50 kg
GRSDS-60	5, 12	1524 x 616 x 545 mm	240	1486 x 533 mm	1715	76 kg
Dual Shelf						
GRSDS-24D	4, 10	610 x 616 x 820 mm	240	572 x 533 mm	1611	52 kg
GRSDS-30D	4, 12	762 x 616 x 820 mm	240	724 x 533 mm	1690	64 kg
GRSDS-36D	4, 14	914 x 616 x 820 mm	240	876 x 533 mm	1990	73 kg
GRSDS-41D	6, 16	1041 x 616 x 820 mm	240	1003 x 533 mm	2120	82 kg
GRSDS-52D	8, 20	1321 x 616 x 820 mm	240	1283 x 533 mm	2325	98 kg
GRSDS-60D*	10, 24	1524 x 616 x 820 mm	240	1486 x 533 mm	3340	108 kg

* No cap.

All Slant Display Warmer Models Feature:

Cord Location: 1829 mm. Control side at right base corner.

OPTIONS AND ACCESSORIES – PAGE 4





GRSDS-36D with dual slanted shelves

OPTIONS (available at time of purchase only)

ITC-S	Indicating Temperature Control (LED) for single shelf
ITC-D	Indicating Temperature Control (LED) for dual shelf
SSEND	Stainless Steel End Panels in lieu of Glass End Panels
127 mm Sneeze Guard on customer side (GRSDS one side, GRSDH two sides) –	
GRSD24BP	610 mm width models
GRSD30BP	762 mm width models
GRSD36BP	914 mm width models
GRSD41BP	1041 mm width models
GRSD52BP	1321 mm width models
GRSD60BP	1524 mm width models
GRSDFLIPLOCK1	Flip-Up Door Locking Plate (for GRSDS-xx and GRSDS-xxD models -24 to -41)
GRSDFLIPLOCK2	Flip-Up Door Locking Plate (for GRSDS-xx and GRSDS-xxD models -52 to -60)

Display Sign Holder (Signs not included) – Color matches unit color – Top or intermediate shelf (Slant or Horizontal models) –

GRSDS-24SIGN	610 mm width (requires 575 W x 100 H x 2 D mm Sign)
GRSDS-30SIGN	762 mm width (requires 727 W x 100 H x 2 D mm Sign)
GRSDS-36SIGN	914 mm width (requires 879 W x 100 H x 2 D mm Sign)
GRSDS-41SIGN	1041 mm width (requires 1006 W x 100 H x 2 D mm Sign)
GRSDS-52SIGN	1321 mm width (requires 1286 W x 100 H x 2 D mm Sign)
GRSDS-60SIGN	1524 mm width (requires 1489 W x 100 H x 2 D mm Sign)

ACCESSORIES

4"LEGS	102 mm Adjustable Legs (standard on units GRSDH-41 and larger, GRSDS-36 and larger and all duals)
--------	---

Plexi-Glass Flip-Up Doors on one side for GRSDS Models – Not compatible with optional Sneeze Guards or Display Sign Holders in same opening –

SDS24FLIP	610 mm width models
SDS30FLIP	762 mm width models
SDS36FLIP	914 mm width models
SDS41FLIP	1041 mm width models
SDS52FLIP	1321 mm width models – split doors
SDS60FLIP	1524 mm width models – split doors

Plexi-Glass Flip-Up Doors on one side for GRSDH Models – Not compatible with optional Sneeze Guards or Display Sign Holders in same opening –

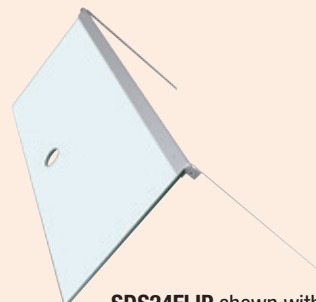
GRSDH24FLIP	610 mm width models
GRSDH30FLIP	762 mm width models
GRSDH36FLIP	914 mm width models
GRSDH41FLIP	1041 mm width models
GRSDH52FLIP	1321 mm width models – split doors
GRSDH60FLIP	1524 mm width models – split doors
GRSDH-DIV	Additional Stainless Steel Divider Rods – Horizontal models
GRSDS-DIV	Additional Stainless Steel Divider Rods – Slant models

OPTIONS (available at time of purchase only)

Designer Colors – Non-standard colors are non-returnable – Glossy Gray Standard –

RED	Warm Red
BLACK	Black
GRAY	Gray Granite
WHITE	White Granite
NAVY	Navy Blue
GREEN	Hunter Green
COPPER	Antique Copper

COLORS AND FINISHES – PAGE 15



SDS24FLIP shown with brackets for retrofit

Glo-Ray® Designer Merchandising Warmers

Boost impulse sales by showcasing your hot foods in the Hatco Glo-Ray® Designer Merchandising Warmers. Designed specifically for displaying wrapped or boxed product, these warmers hold hot food safely at proper serving temperatures.

- Designer look for contemporary décors
- Constructed of aluminum and stainless steel with tempered glass side panels
- Pre-focused infrared top heat directs heat to the outer edges where heat loss is greatest
- Available in single- or two-tier models
- Horizontal or slant shelves
- Product divider rods sort food displays
- Thermostatically-controlled hardcoated heated base extends holding times
- Shatter-resistant incandescent lights illuminate the holding areas and emphasize the product

GR2SDH-30
with optional
Designer color
inset panels



GR2SDS-30D
in optional
Designer Black



DESIGNER HORIZONTAL DISPLAY WARMERS

Model*	No. of Bulbs, Divider Rods	Dimensions (W x D x H) <i>Height includes legs</i>	Voltage Single Phase	Usable Heated Shelf Space W x D	Watts	Ship Weight
Single Shelf						
GR2SDH-24	2, 5	768 x 686 x 459 mm	240	603 x 559 mm	820	40 kg
GR2SDH-30	2, 6	921 x 686 x 459 mm	240	759 x 559 mm	1020	55 kg
GR2SDH-36	2, 7	1073 x 686 x 459 mm	240	911 x 559 mm	1220	59 kg
GR2SDH-42	4, 8	1226 x 686 x 459 mm	240	1064 x 559 mm	1490	63 kg
GR2SDH-48	4, 9	1378 x 686 x 459 mm	240	1216 x 559 mm	1690	73 kg
GR2SDH-54	4, 10	1530 x 686 x 459 mm	240	1368 x 559 mm	1890	78 kg
GR2SDH-60	6, 12	1683 x 686 x 459 mm	240	1521 x 559 mm	2210	85 kg
Dual Shelf						
GR2SDH-24D	4, 10	768 x 686 x 737 mm	240	603 x 559 mm	1640	57 kg
GR2SDH-30D	4, 12	921 x 686 x 737 mm	240	759 x 559 mm	2040	72 kg
GR2SDH-36D	4, 14	1073 x 686 x 737 mm	240	911 x 559 mm	2440	93 kg
GR2SDH-42D	8, 16	1226 x 686 x 737 mm	240	1064 x 559 mm	2980	102 kg
GR2SDH-48D	8, 18	1378 x 686 x 737 mm	240	1216 x 559 mm	3380	115 kg
GR2SDH-54D*	8, 20	1530 x 686 x 737 mm	240	1368 x 559 mm	3780	124 kg
GR2SDH-60D*	12, 24	1683 x 686 x 737 mm	240	1521 x 559 mm	4420	149 kg

All Designer Horizontal Display Warmer Models Feature:
Cord Location: Back center of base on control side.

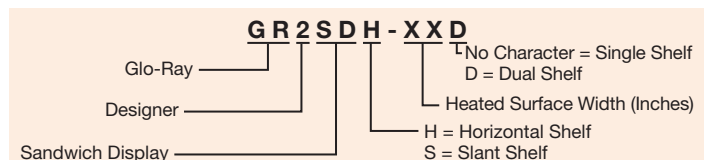
DESIGNER SLANT DISPLAY WARMERS

Model*	No. of Bulbs, Divider Rods	Dimensions (W x D x H) <i>Height includes legs</i>	Voltage Single Phase	Usable Heated Shelf Space W x D	Watts	Ship Weight
Single Shelf						
GR2SDS-24	2, 5	768 x 680 x 579 mm	240	603 x 559 mm	820	47 kg
GR2SDS-30	2, 6	921 x 680 x 579 mm	240	759 x 559 mm	1020	50 kg
GR2SDS-36	2, 7	1073 x 680 x 579 mm	240	911 x 559 mm	1220	62 kg
GR2SDS-42	4, 8	1226 x 680 x 579 mm	240	1064 x 559 mm	1490	70 kg
GR2SDS-48	4, 9	1378 x 680 x 579 mm	240	1216 x 559 mm	1690	74 kg
GR2SDS-54	4, 10	1530 x 680 x 579 mm	240	1368 x 559 mm	1890	83 kg
GR2SDS-60	6, 12	1683 x 680 x 579 mm	240	1521 x 559 mm	2210	92 kg
Dual Shelf						
GR2SDS-24D	4, 10	768 x 680 x 860 mm	240	603 x 559 mm	1640	74 kg
GR2SDS-30D	4, 12	921 x 680 x 860 mm	240	759 x 559 mm	2040	84 kg
GR2SDS-36D	4, 14	1073 x 680 x 860 mm	240	911 x 559 mm	2440	91 kg
GR2SDS-42D	8, 16	1226 x 680 x 860 mm	240	1064 x 559 mm	2980	99 kg
GR2SDS-48D	8, 18	1378 x 680 x 860 mm	240	1216 x 559 mm	3380	116 kg
GR2SDS-54D*	8, 20	1530 x 680 x 860 mm	240	1368 x 559 mm	3780	120 kg
GR2SDS-60D*	12, 24	1683 x 680 x 860 mm	240	1521 x 559 mm	4420	135 kg

* When no color is specified, color inset panels and corner caps will be Black.
* No cap on 240V.

All Designer Slant Display Warmer Models Feature:
Cord Location: Back center of base on control side.

OPTIONS AND ACCESSORIES – PAGE 6





GR2SDS-24D with optional *Designer* color inset panels

OPTIONS (available at time of purchase only)

Designer Corner Caps – Non-standard colors are non-returnable –

BLACK	Black Corner Caps
DKGRAY	Dark Gray Corner Caps

127 mm Sneeze Guard (on customer side only for Slant models) –

GR2SD24BP	768 mm width models
GR2SD30BP	921 mm width models
GR2SD36BP	1073 mm width models
GR2SD42BP	1226 mm width models
GR2SD48BP	1378 mm width models
GR2SD54BP	1530 mm width models
GR2SD60BP	1683 mm width models

Flip-Up Doors on front or back –

2SDS24FLIP	768 mm width models
2SDS30FLIP	921 mm width models
2SDS36FLIP	1073 mm width models
2SDS42FLIP	1226 mm width models
2SDS48FLIP	1378 mm width models – split doors
2SDS54FLIP	1530 mm width models – split doors
2SDS60FLIP	1683 mm width models – split doors

2SDHFRGLS Front Glass in lieu of Channel Dividers and Divider Rods. Cannot have Sneeze Guards or Flip-Up Doors (GR2SDH series only)

SS-ITC	Indicating Temperature Control (LED) for single shelf (adds 48 mm to Horizontal model depth and 45 mm to Slant model depth)
DS-ITC	Indicating Temperature Control (LED) for dual shelf (adds 48 mm to Horizontal model depth and 45 mm to Slant model depth)

ACCESSORIES

2SD-DIV	Additional Stainless Steel Divider Rods
----------------	---

COLORS AND FINISHES – PAGE 15

OPTIONS (available at time of purchase only)

Designer Colors – Non-standard colors are non-returnable – Clear Anodized Aluminum Standard –

RED	Warm Red
BLACK	Black
GRAY	Gray Granite
WHITE	White Granite
NAVY	Navy Blue
GREEN	Hunter Green
COPPER	Antique Copper

Designer Inset Panel Colors – Non-standard colors are non-returnable – Black Standard –

RED	Warm Red
BLACK	Black
GRAY	Gray Granite
WHITE	White Granite
NAVY	Navy Blue
GREEN	Hunter Green
COPPER	Antique Copper



SS-ITC Optional



DS-ITC Optional

Heated LED Merchandisers

The new Heated Merchandiser with LED lighting is sleekly designed to safely hold hot packaged food to attract your grab-and-go customers. Available with slant or horizontal shelves, the Heated LED Merchandising Warmers are offered in both single and dual shelf models.

- Choose from slant or horizontal, single or dual shelf models
- Infrared heat safely holds hot packaged product for hours
- High efficiency LED lighting creates better illumination of food product in the holding area
- Features a thermostatically-controlled hardcoated heated base shelf
- Hinged glass side panels are held in place magnetically and swing out for easy cleaning
- An optional Indicating Temperature Control (ITC) enhances accurate control of temperature



HXMS-36D
in standard
Designer Black

HORIZONTAL HEATED LED MERCHANDISING WARMERS

Model	Divider Rods	Dimensions (W x D x H) <i>Height includes legs</i>	Usable Heated Shelf Space W x D	Voltage	Amps	Watts	Ship Weight*
Single Shelf							
HXMH-24	5	709 x 725 x 555 mm	567 x 552 mm	230	2.9	671	55 kg
HXMH-30	6	861 x 725 x 555 mm	720 x 552 mm	230	3.8	863	60 kg
HXMH-36	7	1013 x 725 x 555 mm	872 x 552 mm	230	4.6	1055	66 kg
HXMH-42	8	1166 x 725 x 555 mm	1025 x 552 mm	230	5.2	1201	73 kg
HXMH-48	9	1318 x 725 x 555 mm	1177 x 552 mm	230	6.1	1392	86 kg
HXMH-54	10	1471 x 725 x 555 mm	1329 x 552 mm	230	6.9	1585	93 kg
HXMH-60	12	1623 x 725 x 555 mm	1482 x 552 mm	230	7.7	1777	104 kg
Dual Shelf							
HXMH-24D	10	709 x 725 x 835 mm	567 x 552 mm	230	5.8	1342	73 kg
HXMH-30D	12	861 x 725 x 835 mm	720 x 552 mm	230	7.5	1726	84 kg
HXMH-36D	14	1013 x 725 x 835 mm	872 x 552 mm	230	9.2	2110	93 kg
HXMH-42D	16	1166 x 725 x 835 mm	1025 x 552 mm	230	10.4	2402	100 kg
HXMH-48D	18	1318 x 725 x 835 mm	1177 x 552 mm	230	12.1	2784	111 kg
HXMH-54D+	20	1471 x 725 x 835 mm	1329 x 552 mm	230	13.8	3170	123 kg
HXMH-60D+	24	1623 x 725 x 835 mm	1482 x 552 mm	230	15.5	3554	136 kg

SLANT HEATED LED MERCHANDISING WARMERS

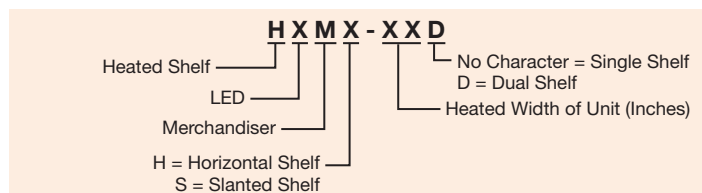
Model	Divider Rods	Dimensions (W x D x H) <i>Height includes legs</i>	Usable Heated Shelf Space W x D	Voltage	Amps	Watts	Ship Weight*
Single Shelf							
HXMS-24	5	709 x 715 x 551 mm	567 x 552 mm	230	2.9	671	51 kg
HXMS-30	6	861 x 715 x 551 mm	720 x 552 mm	230	3.8	863	60 kg
HXMS-36	7	1013 x 715 x 551 mm	872 x 552 mm	230	4.6	1055	68 kg
HXMS-42	8	1166 x 715 x 551 mm	1025 x 552 mm	230	5.2	1201	73 kg
HXMS-48	9	1318 x 715 x 551 mm	1177 x 552 mm	230	6.1	1392	85 kg
HXMS-54	10	1471 x 715 x 551 mm	1329 x 552 mm	230	6.9	1585	93 kg
HXMS-60	12	1623 x 715 x 551 mm	1482 x 552 mm	230	7.7	1777	104 kg
Dual Shelf							
HXMS-24D	10	709 x 715 x 831 mm	567 x 552 mm	230	5.8	1342	73 kg
HXMS-30D	12	861 x 715 x 831 mm	720 x 552 mm	230	7.5	1726	84 kg
HXMS-36D	14	1013 x 715 x 831 mm	872 x 552 mm	230	9.2	2110	94 kg
HXMS-42D	16	1166 x 715 x 831 mm	1025 x 552 mm	230	10.4	2402	105 kg
HXMS-48D	18	1318 x 715 x 831 mm	1177 x 552 mm	230	12.1	2784	111 kg
HXMS-54D+	20	1471 x 715 x 831 mm	1329 x 552 mm	230	13.8	3170	123 kg
HXMS-60D+	24	1623 x 715 x 831 mm	1482 x 552 mm	230	15.5	3554	132 kg

* Shipping weights are approximate.

+ No plug.

All Heated LED Merchandising Warmer Models Feature:
Cord Location: Back center of base, on left side of control box.

OPTIONS AND ACCESSORIES – PAGE 8





HZMS-48D in standard *Designer Black* with optional red LED accent lighting in support posts

OPTIONS (available at time of purchase only)

Designer Colors – Non-standard colors are non-returnable – Black Standard –

RED	Warm Red
BLACK	Black
GRAY	Gray Granite
WHITE	White Granite
NAVY	Navy Blue
GREEN	Hunter Green
COPPER	Antique Copper
HZM-LP	Red LED Accent Lighting in support post
SS-ITC	Indicating Temperature Control (LED) for single shelf
DS-ITC	Indicating Temperature Control (LED) for dual shelf

127 mm Sneeze Guards on customer side (not compatible with Flip-Up Doors in same opening) –

HZM24BP	-24 models
HZM30BP	-30 models
HZM36BP	-36 models
HZM42BP	-42 models
HZM48BP	-48 models
HZM54BP	-54 models
HZM60BP	-60 models

Plexi-Glass Flip-Up Doors on control or customer side (one side only – not compatible with Sneeze Guards in same opening) –

HZM24FLIP	-24 models
HZM30FLIP	-30 models
HZM36FLIP	-36 models
HZM42FLIP	-42 models
HZM48FLIP	-48 models
HZM54FLIP	-54 models
HZM60FLIP	-60 models

ACCESSORIES

HZM-DIV	Additional Stainless Steel Divider Rods
----------------	---

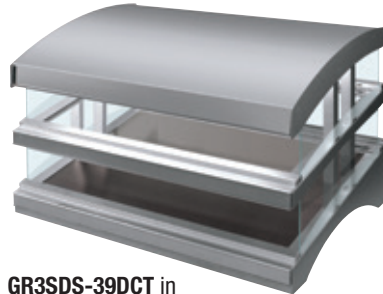
COLORS AND FINISHES – PAGE 15

Glo-Ray® Heated Glass Merchandising Warmers

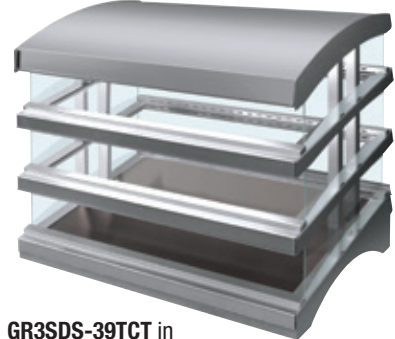
Hatco's Glo-Ray® Heated Glass Merchandising Warmers are perfect for holding hot wrapped or boxed foods on a buffet line or customer serving areas, and feature a curved design that compliments any décor.

- Blanket-style heating elements in the hardcoated base that are thermostatically-controlled
- The transparent shelf utilizes a patented heated glass, which radiates heat down while conducting heat up, allowing you to hold foods longer and safer at optimum serving temperatures

- LED lighting allows for optimal food product display with energy savings
- Also with tempered glass side panels, heated base and box stops/sign holders on each shelf (signs not included)



GR3SDS-39DCT in standard Glossy Gray with standard top sign holder (signs not included)



GR3SDS-39TCT in standard Glossy Gray with standard top sign holder (signs not included)

HEATED GLASS MERCHANDISERS

Model	Dimensions (W x D x H) <i>Height includes legs</i>	Usable Heated Shelf Space W x D	Voltage Single Phase	Watts	Amps	Ship Weight
Dual Shelf GR3SDS-39DCT	995 x 699 x 673 mm	895 x 540 mm	220-230-240	1945-2120-2305	8.8-9.2-9.6	84 kg
Triple Shelf GR3SDS-39TCT*	995 x 699 x 882 mm	895 x 540 mm	220-230-240	2720-2970-3235	12.4-12.9-13.5	109 kg

* No cap.

All Heated Glass Merchandiser Models Feature:

Divider Rods Included: **GR3SDS-39DCT**: 14 rods (7 per shelf).

GR3SDS-39TCT: 21 rods (7 per shelf).

Cord Location: Right rear on server side.

OPTIONS (available at time of purchase only)

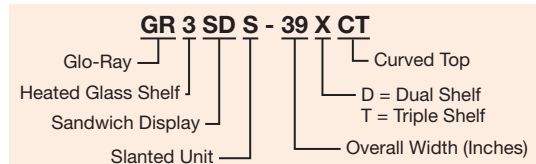
Designer Colors – Non-standard colors are non-returnable – Glossy Gray Standard –

RED	Warm Red
BLACK	Black
GRAY	Gray Granite
WHITE	White Granite
NAVY	Navy Blue
GREEN	Hunter Green
COPPER	Antique Copper

ACCESSORIES

3SD-DIV	Additional Stainless Steel Divider Rods
4"LEGS	102 mm Adjustable Legs

COLORS AND FINISHES – PAGE 15





Glo-Ray® Curved Merchandising Warmers

Looking to add a touch of class to a new point-of-sale area or to change or upgrade an existing area? Hatco's Glo-Ray® Curved Merchandising Warmer offers a unique and attractive solution for impulse sales areas.

- Single shelf and dual shelf units come standard with mirrored glass back panel
- Individual thermostatically-controlled heated base with master rocker switch maintains safe-serving temperatures
- Incandescent lighting allows for optimal food product display

- Humidified dual shelf unit contains a 1.2 liter capacity water reservoir
- Models with simulated stone are Swanstone®



GRCMW-1 in standard Designer Black with food pans (not available)



GRCMW-1DH in standard Designer Black with food pans (not available)

CURVED MERCHANDISING WARMERS

Model	Dimensions W x D x H	Usable Heated Shelf Space W x D		Voltage Single Phase	Watts	Ship Weight
		Top Shelf	Bottom Shelf			
Single Shelf GRCMW-1	562 x 546 x 505 mm	—	501 x 330 mm	240	670	25 kg
Dual Shelf GRCMW-1D	660 x 511 x 683 mm	577 x 314 mm	577 x 396 mm	240	1540	42 kg
Dual Shelf with Humidity GRCMW-1DH*	660 x 511 x 683 mm	577 x 314 mm	577 x 396 mm	240	1660	45 kg

* Humidity on bottom shelf only.

All Curved Merchandising Warmer Models Feature:
 Water Reservoir Capacity (GRCMW-1DH Model Only): 1.2 liters.
 Cord Location: Control side at right base corner.

WATER QUALITY REQUIREMENTS - PAGE 15

OPTIONS (available at time of purchase only)

Designer Colors (unit's painted surface) – Non-standard colors are non-returnable – Black Standard –

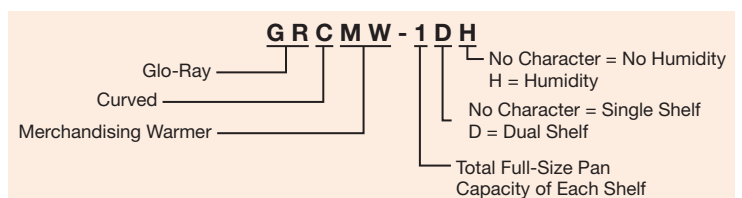
RED	Warm Red
BLACK	Black
GRAY	Gray Granite
WHITE	White Granite
NAVY	Navy Blue
GREEN	Hunter Green
COPPER	Antique Copper

Simulated Stone Colors (unit's painted surface and decorative trim inserts) – Non-standard colors are non-returnable –

GGRAN	Gray Granite
NSKY	Bermuda Sand
BSAND	Night Sky

CMWDBACKFLIP	Top and bottom shelf Flip-Up Doors on server's side in lieu of Mirrored Back Panel (GRCMW-1D, -1DH models only)
CMWDTOPFLIP	Top shelf Flip-Up Door on customer side in lieu of Sneeze Guard (GRCMW-1D, -1DH models only)

COLORS AND FINISHES – PAGE 15



Glo-Ray® Designer Heated Display Cases

Our *Designer* series Glo-Ray® Heated Display Case with curved glass and incandescent lighting will display your offering with flare and elegance. We combine our thermostatically-controlled heated base and infrared overhead heating to blanket your offering at the perfect temperature.

- High visibility merchandiser with curved tempered glass
- Exclusive cool base construction
- Rollerless sliding doors
- Available with or without controlled humidity (bottom shelf only)
- Constructed of aluminum and stainless steel with tempered glass
- Curved glass front tilts forward for easy cleaning
- Pre-focused infrared top heat directs heat to the outer edges where heat loss is greatest
- Shatter-resistant incandescent lights illuminate the food product



GRCD-2PD with optional pan skirt, *Designer* color and flip-up doors, and accessory food pans



GRCDH-1PD with pan skirt, optional flip-up doors and accessory food pans (top baking dish not available)



Humidified reservoir is located in between pans



GRCDH-3PD shown in standard Stainless Steel with accessory food pans

DESIGNER DISPLAY CASES

Model*	Bulbs	Dimensions (W x D x H) Height includes legs	Usable Heated Shelf Space W x D	Voltage Single Phase	Watts	Ship Weight
Single Shelf						
GRCD-1P	2	524 x 660 x 610 mm	460 x 533 mm	240	425	43 kg
GRCD-2P	3	826 x 660 x 610 mm	762 x 533 mm	240	780	55 kg
GRCD-3P	3	1156 x 660 x 610 mm	1092 x 533 mm	240	1005	69 kg
Dual Shelf						
GRCD-1PD	4	524 x 660 x 806 mm	460 x 533 mm	240	905	45 kg
GRCD-2PD	6	826 x 660 x 806 mm	762 x 533 mm	240	1285	77 kg
GRCD-3PD	6	1156 x 660 x 806 mm	1092 x 533 mm	240	1710	95 kg
Single Shelf with Humidity*						
GRCDH-1P	2	524 x 660 x 610 mm	460 x 533 mm	240	697	44 kg
GRCDH-2P	3	826 x 660 x 610 mm	762 x 533 mm	240	1052	56 kg
GRCDH-3P	3	1156 x 660 x 610 mm	1092 x 533 mm	240	1277	71 kg
Dual Shelf with Humidity*						
GRCDH-1PD	4	524 x 660 x 806 mm	460 x 533 mm	240	1177	55 kg
GRCDH-2PD	6	826 x 660 x 806 mm	762 x 533 mm	240	1532	79 kg
GRCDH-3PD	6	1156 x 660 x 806 mm	1092 x 533 mm	240	1982	100 kg

♦ Model number indicates the number of full-size food pans the unit will hold, with same number of half-size pans for units with a top shelf (i.e., 2P = two pans).

* Humidity on bottom shelf only. Includes pan skirt on bottom shelf. Pan skirts accommodate 64 mm pans.

All Designer Display Case Models Feature:

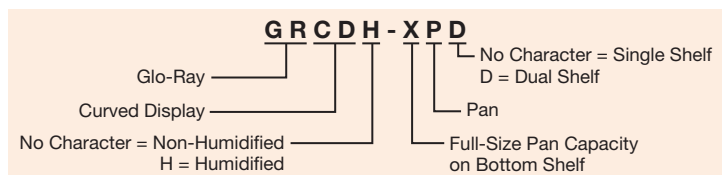
Cord Location: Control side at right base corner.

All Designer Display Case Models with Humidity Feature:

Water Chamber Capacity: 3 liters.

OPTIONS – PAGE 12

WATER QUALITY REQUIREMENTS - PAGE 15





GRCD-2PD with optional Designer color and flip-up doors

OPTIONS (available at time of purchase only)

Designer Colors – Non-standard colors are non-returnable – Stainless Steel Standard –

RED	Warm Red
BLACK	Black
GRAY	Gray Granite
WHITE	White Granite
NAVY	Navy Blue
GREEN	Hunter Green
COPPER	Antique Copper

Self-Closing Flip-Up Doors on both shelves on customer side in lieu of Glass Front (adds 13 mm depth to unit) –

NEW CD1PDFLIP	1-Pan models
CD2PDFLIP	2-Pan models
CD3PDFLIP	3-Pan models

Pan Skirt on bottom shelf (accommodates 64 D mm Pans – standard on Humidified models) –

SKIRT-1P	1-Pan model in lieu of Pan Rail
SKIRT-2P	2-Pan model in lieu of Pan Rail
SKIRT-3P	3-Pan model in lieu of Pan Rail

UPPERSKIRT-2P	Pan Skirt for upper shelf of 2-Pan models in lieu of Pan Stop
UPPERSKIRT-3P	Pan Skirt for upper shelf of 3-Pan models in lieu of Pan Stop

Mirrored Glass Sliding Doors in lieu of Glass Doors (server side only) –

Single Shelf Models –

MIRROR	-1P
MIRROR	-2P
MIRROR	-3P

Dual Shelf Models –

MIRROR	-1PD
MIRROR	-2PD
MIRROR	-3PD

COLORS AND FINISHES – PAGE 15

HEATED DISPLAY CASE MAXIMUM PAN CAPACITIES*

Model	Pan Capacity	Optional Pan Skirt Frames
GRCD-1P	One (1) Full-Size Pan	One (1) SKIRT-1P
GRCD-2P	Two (2) Full-Size Pans	One (1) SKIRT-2P
GRCD-3P	Three (3) Full-Size Pans	One (1) SKIRT-3P
GRCD-1PD – Top Shelf	One (1) Half-Size Pan or One (1) 356 mm Pizza Pan	None
GRCD-1PD – Bottom Shelf	One (1) Full-Size Pan	One (1) SKIRT-1P
GRCD-2PD – Top Shelf	One (1) Full-Size Pan and One (1) Third-Size Pan or Two (2) 356 mm Pizza Pans	One (1) UPPERSKIRT-2P
GRCD-2PD – Bottom Shelf	Two (2) Full-Size Pans	One (1) SKIRT-2P
GRCD-3PD – Top Shelf	Two (2) Full-Size Pans or Three (3) 356 mm Pizza Pans	One (1) UPPERSKIRT-3P
GRCD-3PD – Bottom Shelf	Three (3) Full-Size Pans	One (1)

* All pan capacities shown are for non-humidified models. 64 mm deep pans recommended for bottom shelf of humidified models.

Glo-Ray® Heated Display Cases

Designed for “show and sell” areas in any foodservice operation, the Hatco Glo-Ray® Heated Display Case is perfect for hot food merchandising. The top and bottom heat combine to keep food at peak serving temperature longer.

- Thermostatically-controlled heated base 38°-93°C to extend holding times
- Pre-focused infrared top heat directs heat to the outer edges where heat loss is greatest
- Constructed of aluminum and stainless steel with tempered glass
- Shatter-resistant incandescent lights illuminate the food product
- Exclusive cool base construction minimizes heat transfer, keeping exterior base cool
- Single or dual models, with or without humidity (bottom shelf only)
- Rollerless sliding doors



GRHD-4PD with optional *Designer* color, mirrored glass doors and accessory food pans



GRHDH-2P with standard pan skirt, optional double side opening and accessory food pans

DISPLAY CASES

Model*	Bulbs	Dimensions (W x D x H) <i>Height includes legs</i>	Usable Heated Shelf Space W x D	Voltage Single Phase	Watt	Ship Weight
Single Shelf						
GRHD-2P	4	826 x 660 x 635 mm	712 x 553 mm	240	940	54 kg
GRHD-3P	5	1156 x 660 x 635 mm	1042 x 553 mm	240	1350	65 kg
GRHD-4P	6	1486 x 660 x 635 mm	1372 x 553 mm	240	1785	98 kg
Dual Shelf						
GRHD-2PD	6	826 x 660 x 762 mm	712 x 553 mm	240	1310	68 kg
GRHD-3PD	8	1156 x 660 x 762 mm	1042 x 553 mm	240	1755	86 kg
GRHD-4PD	8	1486 x 660 x 762 mm	1372 x 553 mm	240	2480	104 kg
Single Shelf with Humidity*						
GRHDH-2P	4	826 x 660 x 635 mm	712 x 553 mm	240	1212	57 kg
GRHDH-3P	5	1156 x 660 x 635 mm	1042 x 553 mm	240	1622	74 kg
GRHDH-4P	6	1486 x 660 x 635 mm	1372 x 553 mm	240	2329	98 kg
Dual Shelf with Humidity*						
GRHDH-2PD	6	826 x 660 x 762 mm	712 x 553 mm	240	1582	80 kg
GRHDH-3PD	8	1156 x 660 x 762 mm	1042 x 553 mm	240	2027	85 kg
GRHDH-4PD	8	1486 x 660 x 762 mm	1372 x 553 mm	240	2980	109 kg

* Model number indicates the number of full-size food pans the unit will hold, with same number of half-size pans for units with a top shelf (i.e., 2P = two pans).
* Humidity on bottom shelf only. Includes pan skirt on bottom shelf. Pan skirts accommodate 64 mm pans.

All Display Case Models Feature:

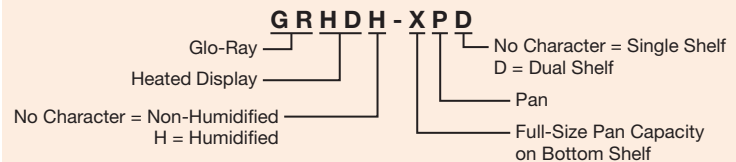
Water Reservoir Capacity: 2-Pan and 3-Pan: 3 liters.

4-Pan: 6 liters.

Cord Location: 1829 mm, control side at right base corner.

OPTIONS – PAGE 14

WATER QUALITY REQUIREMENTS - PAGE 15





GRHD-4PD with optional pan skirts
 Top shelf: two (2) **SKIRT-1P**
 Bottom shelf: one (1) **SKIRT-4P**

OPTIONS (available at time of purchase only)

Designer Colors – Non-standard colors are non-returnable – Stainless Steel Standard –

RED	Warm Red
BLACK	Black
GRAY	Gray Granite
WHITE	White Granite
NAVY	Navy Blue
GREEN	Hunter Green
COPPER	Antique Copper
SKIRT-2P	2-Pan Pan Skirt for 64 D mm Pans on bottom shelf in lieu of Pan Rail (standard on Humidified models)
SKIRT-3P	3-Pan Pan Skirt (one [1] SKIRT-1P and one [1] SKIRT-2P) for 64 D mm Pans on bottom shelf in lieu of Pan Rail (standard on Humidified models)
SKIRT-4P	4-Pan Pan Skirt (two [2] SKIRT-2P) for 64 D mm Pans on bottom shelf in lieu of Pan Rail (standard on Humidified models)
UPPERSKIRT-2P	Pan Skirt for upper shelf of 2-Pan Models in lieu of Pan Stop
UPPERSKIRT-3P	Pan Skirt for upper shelf of 3-Pan Models in lieu of Pan Stop
UPPERSKIRT-4P	Pan Skirt for upper shelf of 4-Pan Models in lieu of Pan Stop
FLIP	Flip-Up Doors on Control Side (in lieu of Glass Sliding Doors)

Sliding Door in lieu of Fixed Glass Customer Panel –

SLIDE-2P	Per opening
SLIDE-3P	Per opening
SLIDE-4P	Per opening

Flip-Up Door in lieu of Fixed Glass Customer Panel –

FLIP-2P	Per opening
FLIP-3P	Per opening
FLIP-4P	Per opening

Mirror Glass Sliding Door in lieu of Rear Sliding Door –

MIRROR-2P	Per opening
MIRROR-3P	Per opening
MIRROR-4P	Per opening

COLORS AND FINISHES – PAGE 15

HEATED DISPLAY CASE MAXIMUM PAN CAPACITIES*

Model	Pan Capacity	Optional Pan Skirt Frames
GRHD-2P	Two (2) Full-Size Pans	One (1) SKIRT-2P
GRHD-3P	Three (3) Full-Size Pans	One (1) SKIRT-3P
GRHD-4P	Four (4) Full-Size Pans	One (1) SKIRT-4P
GRHD-2PD – Top Shelf	Two (2) Half-Size Pans or Two (2) 356 mm Pizza Pans	One (1) UPPERSKIRT-2P
GRHD-2PD – Bottom Shelf	Two (2) Full-Size Pans	One (1) SKIRT-2P
GRHD-3PD – Top Shelf	Three (3) Half-Size Pans or Three (3) 356 mm Pizza Pans	One (1) UPPERSKIRT-3P
GRHD-3PD – Bottom Shelf	Three (3) Full-Size Pans	One (1) SKIRT-3P
GRHD-4PD – Top Shelf	Two (2) Full-Size Pans or Four (4) Half-Size Pans or Four (4) 356 mm Pizza Pans	One (1) UPPERSKIRT-4P
GRHD-4PD – Bottom Shelf	Four (4) Full-Size Pans	One (1) SKIRT-4P

* All pan capacities shown are for non-humidified models. 64 mm deep pans recommended for bottom shelf of humidified models.



GR2SDS-48D in standard *Designer* Black inset panels

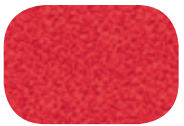
Water Quality Requirements

Water supply in excess of .75 grains of hardness per liter (GPL) must be treated and softened before being used. Water containing over .75 GPL will decrease the efficiency and reduce the operating life of the unit.

NOTE: Product failure caused by liming or sediment buildup is not covered under warranty.

Paint Chip and Stone Sample Colors

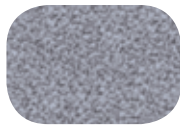
DESIGNER COLORS



Warm Red



Black



Gray
Granite



White
Granite



Navy Blue



Hunter
Green



Antique
Copper

GLOSS FINISHES



Glossy
Gray

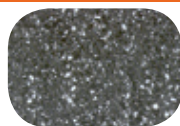
SIMULATED STONE* COLORS



Gray
Granite



Bermuda
Sand



Night Sky

Colors are a representation and may not exactly match our colors. Consult factory for possible color matching options on these colors. Non-standard colors are non-returnable.

To order a Hatco Paint Chip & Stone Sample Colors Sheet, visit www.hatcocorp.com / Order Literature / Sales Literature / Sell Sheets.

* Simulated Stone is Swanstone®



Scan with web-enabled
mobile device to visit
www.hatcocorp.com

Hatco Corporation

St. George's House | Rearsby Business Park
Gaddesby Lane | Rearsby | Leicestershire LE7 4YH
Tel: 01509 260 140 | Fax: 01509 260 151
www.hatcocorp.com | sales@gamblefs.co.uk