

Operating & Cleaning Instructions

Instanta Stainless Steel Commercial Urns

URN

Key Features

- Top quality commercial urn made in Australia for export to world markets.
- Polished stainless steel with welded joints for superior corrosion resistance.
- Thermostat control sensor maintains water temperature at the dialled setting.
- Safety cut-out switch always turns the power off before the urn can boil dry.
- Water gauge, indicator light, non-drip tap, heat-resistant handles and locking lid.
- Steam vents to rear.

Key Specifications

Model Number	MF 10	MF 20	MF 30	MF 40
Capacity (litres)	10	20	30	40
Number of cups	40 - 50	80 -100	130 -150	175 - 200
Heating elements (amps)	10	10	10	10
Supply voltage (volts)	220 -240	220 -240	220 -240	220 -240
Height (mm)	390	457	480	580
Diameter (mm)	253	300	355	355
Handle width (mm)	359	406	460	460
Nett Weight (kg)	3	4	4.5	5
Full Weight (kg)	13	24	34.5	45

NOTE:

Cup size is 167ml

Read These Warnings First

- Read all instructions before attempting to use this appliance.
- Any damaged cord or plug must be replaced only by an Instanta Service Provider or suitably qualified technician.
- This appliance is not intended for use by persons (including Children) with reduced physical, sensory or mental capabilities, or lack of experience or knowledge, unless they have been given supervision or instruction concerning use of the appliance, by a person responsible for their safety.
- Children should be supervised to ensure they do not play with the appliance.
- Never touch heated surfaces. Use handles and knobs provided.
- Exercise extreme caution when moving any urn containing hot water.
- It is recommended to empty the contents of the urn before attempting to lift or move it.
- Never immerse the urn, cord or plug in water or any other liquid.
- Not for outdoor use or in areas where a water jet may be used for cleaning.
- Always unplug urn from power when not in use and before cleaning.
- Never operate an urn with a damaged power cord or plug.
- Do not allow the urn to boil dry.
- Do not use any accessories or attachments not supplied by Instanta.
- Do not allow cord to touch hot surfaces or hang over table or counter.
- Never place the urn on or near a hot burner or in a heated oven.
- Always plug cord into power outlet before turning any urn controls on.
- Always turn urn controls off before removing plug from power outlet.
- Never use the urn for any purpose other than its intended use.
- Never overfill the urn.
- Beware of scalding steam when lifting urn lid.



Operating Instructions

- Place the urn on a level surface (with sufficient strength to carry the weight when full - check table above) and within easy reach of a power outlet.
- Make sure there is enough room above the urn to allow for filling.
- Position the urn tap where it can be reached easily whilst in use.
- Fill the urn with water to the desired level and replace the urn lid and lock in place.
- Take the water to the urn - do not lift or carry an urn filled with water.
- Plug the urn into a power outlet and switch the power on.
- For maximum heating, turn control knob clockwise until it stops.
- The red pilot light will signal that the power is on and the urn is heating.



Operating & Cleaning Instructions

URNS

Instanta Stainless Steel Commercial Urns

When water has boiled, turn knob anti-clockwise until pilot light is off. Urn will then cycle on and off to keep water close to the selected temperature.

To re-boil the water, turn control knob back to maximum position. After adding cold water, turn knob back to maximum position.

When not in use, turn control knob and power outlet switch off.

In the event of a boil dry, safety cut-out switch will activate.

To reset the safety cut-out, allow Urn to cool, disconnect from power source and reset by pressing black button on the urn base.

Cleaning Instructions

To keep the urn clean, empty and refill with fresh water daily.

Clean exterior with stainless steel cleaner and polish with a dry cloth.

To clean interior, fill urn to maximum level, add one packet of Instanta Renegite*, boil for 15 minutes, turn off and empty, rinse with cold water. Repeat if needed.

Clean the interior at least every 12 months.

Do not use a water jet to clean the urn.

*Instanta Renegite can be ordered by telephone from Instanta for delivery by mail or for supply via an Instanta Service Provider. For service, call 01704 501 114.

Warranty Information

Certain warranties may be implied by law into your contract with Instanta. The warranty provided below is additional to these implied warranties and nothing set out below shall limit your statutory rights or rights at law.

Instanta Ltd. warrants that, should any part fail within 12 calendar months of purchase, the product must be returned to the point of sale or Instanta. The products will be repaired or replaced free of charge by Instanta or its Distributor or Service Provider, if found to be defective, except as set out below, provided the appliance is installed and used strictly in accordance with the instructions supplied, and that failure is not due to accident, misuse, abuse, unsuitable water conditions, or to any alteration, modification or repair by any party not expressly nominated by Instanta.

This warranty does not cover damage resulting from non-operation of the appliance, the use of non authorised parts or consequential damage to any other goods, furnishings or property.

The warranty excludes failures caused by hard water and lime scale. We regret that we cannot be held responsible for problems caused by hard water.

Dripping taps. These components are subject to wear and tear but in the event of a tap failing within 12 months, we are pleased to replace tap springs or washers by post. Fitting is very simple and requires no tools.

Instanta does not exclude, restrict or modify any liability that cannot be excluded, restricted or modified or which cannot, except to a limited extent, be excluded, restricted or modified as between the owner or user and Instanta under the laws applicable.

Furthermore, this warranty does not displace any statutory warranty, but, to the extent to which Instanta is entitled to do so, the liability of Instanta under any statutory warranty will be limited at Instanta's option to the replacement of the appliance or supply of equivalent appliance, the payment of the cost of replacing the appliance or acquiring an equivalent appliance, or the payment of the cost of having the appliance repaired or the repair of the appliance.

For more information please go to our website www.instanta.com.

Head Office:

Instanta Ltd.,
Canning Road
Southport
Merseyside
PR9 7SN

Telephone: 01704 501 114
Facsimile: 01704 501 115
sales@instanta.com
www.instanta.com



Instructions for Installing Urn Thermostat Knob

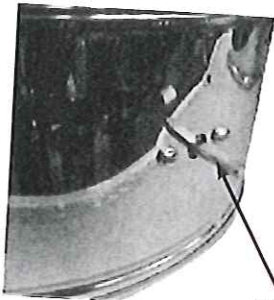


fig.1

Thermostat shaft

Urn thermostat knob front view



fig.2

Urn thermostat knob rear view



fig.3

Thermostat shaft goes in here

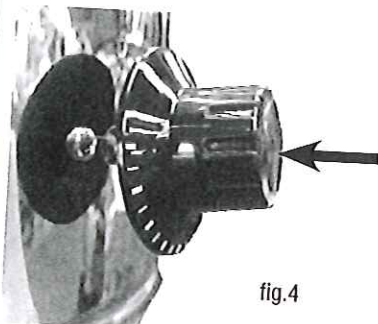


fig.4

To install urn thermostat knob, push the knob onto thermostat shaft as shown in fig.4



fig.5