

Marketing Department
Burco Appliances Ltd
Talbot Road
Mexborough
South Yorkshire
S64 8AJ

Affix
postage
stamp
here

16mm: 50 cups = 320–350g
24 mm: 75 cups = 480–525g
32mm: 100 cups = 650–700g

These are rough guidelines only and should be adjusted to suit the coffee used and strength required.

- 4 Cover the filter basket by the basket cover ②.
 - 5 Slide the basket tray ④ onto the percolator tube and place inside the urn making sure that the foot of the tube is positioned centrally in the well.
 - 6 Slide the filter basket with cover onto the percolator tube then replace the urn lid.
 - 7 Plug the mains cable into the mains supply and press the power switch ⑫ to ON, the lamp in the switch will light up.
 - 8 When the coffee ready neon ⑨ lights up, the brewing process is complete. The coffee will be kept at the correct temperature and coffee can be served. The tap has two positions - one self closing for smaller amounts the other self holding for continuous pouring.
 - 9 When there are only about 3 cups left in the urn, press the power switch to OFF and unplug from the mains supply.
- For best taste do not keep the coffee for longer than 2 hours.

Cleaning

WARNING Disconnect from the mains supply before cleaning and allow the coffee percolator to cool.

IMPORTANT Do not use any abrasive cleaning fluids or materials.

- 1 Wash out the urn. Use clean water and a soft cloth.
- 2 Brush any scale or sediment from inside.
- 3 Rinse thoroughly. The water level indicator can be removed for cleaning by unscrewing the caps top and bottom.

Descaling

In hard water areas scale will form inside the coffee percolator. This will adversely affect the operation of the coffee percolator if allowed to accumulate. Descaling can be simply achieved by using a proprietary descaler. Choose one recommended for stainless steel kettles. It is important to follow the instructions given on the descaling solution carton.

IMPORTANT Failure to descale will invalidate your guarantee.

Specification

Voltage	230V
Wattage	
Brewing	1.5kW
Keep warm	160W
Volume	16 litres
	100 cups

Brewing time approx 65 mins
Temp after brewing 94-97°C
Temp after 1 hour approx 88°C

Guarantee

This coffee percolator is guaranteed for a period of 12 months from the date of purchase against defective materials or faulty workmanship.

This guarantee is given subject to the coffee percolator being used in accordance with the instructions on the supply voltage marked on it and to the usual fair wear and tear

conditions.

The guarantee does not cover consequential damage arising out of any failure acceptable under guarantee, nor does it cover damage resulting from misuse, accident or unauthorised alterations to the coffee percolator.

In any communication with the supplier or manufacturer, it is essential to quote the serial number marked on the coffee percolator.

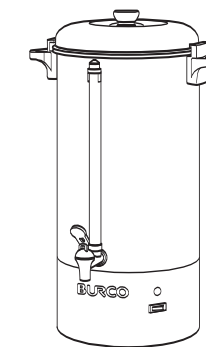
Proof of purchase will be required.

In any communication with the service department, it is essential to quote the model and serial number marked on the base of the coffee percolator.

This guarantee, in no way diminishes the buyer's statutory rights.

Please fill in and return the tear off section to register the guarantee with Burco.

BURCO



Electric coffee percolator



Please read and keep these instructions

Getting the best from your percolator...

- Operate the percolator twice without coffee before general use
- Any water in the coffee percolator is due to testing and is normal
- The coffee percolator must be used on a flat level surface
- Remove any plastic film from the coffee percolator before use

78504 catering coffee percolator

H600mm
W330mm
D350mm
Weight 5.7kg
Capacity 100 cups

Burco Appliances products are intended for commercial use as detailed in these instructions.

Burco Appliances has a policy of continuous improvement in product quality and design. The Company, therefore, reserves the right to change the specification of its models at any time.



Burco Appliances Limited
A MEMBER OF THE GLEN DIMPLEX GROUP
Talbot Road, Mexborough,
South Yorkshire, S64 8AJ
Tel 01282 427241 Fax 01282 831206
Email sales@burcodean.co.uk

BURCO



www.burco.co.uk

CP78504MUK rev 1 1/05

Important safety instructions

The use of any electrical appliance requires the following of basic common sense safety rules.

Primarily there is danger of injury or death and secondly the danger of damage to the appliance. These are indicated in the text by the following two conventions:

WARNING: Danger to the person!

IMPORTANT: Damage to the appliance!

In addition we offer the following essential safety advice.

Location

- Always locate the appliance away from the edge of a worktop.
- Ensure that the appliance is used on a firm, flat surface.
- Do not use outdoors.

Mains lead

- The mains lead should reach from the socket to the appliance without straining the connections.
- Do not let the lead run across an open space e.g. between a low socket and table.
- Do not let the lead run across a cooker or toaster or other hot area which might damage the cable.
- Do not place the appliance where the mains lead could fall into a sink.
- Do not allow cord to touch hot surfaces.

Your safety

- Check the appliance for damage after unpacking. If in doubt, do not use the appliance; telephone Burco using the helpline number for advice.
- **To protect against fire, electric shock and personal injury do not immerse cord, plugs or appliance in water or other liquid.**
- **Do not touch hot surfaces, use handles or knobs.**
- Do not move the urn when it contains hot coffee.
- **Scalding may occur if lid is removed during brewing cycle.** Be sure that the lid is securely in place before brewing and serving coffee.
- Take care if opening the lid for re-filling when the appliance is hot.
- Do not fill above the MAX mark, otherwise hot water may be ejected.
- Remove the plug from the mains supply when the appliance is not in use and allow to cool before cleaning or before putting on or taking off parts.

Children

- Do not allow the appliance to be used by children.
- Make sure that small children cannot reach the coffee maker and that the mains lead does not hang over the edge of the work surface.

Treating scalds

Run cold water over the affected area immediately. Do

not stop to remove clothing, get medical help quickly.

Other safety considerations

- Do not operate any appliance with a damaged cord or plug or after the appliance malfunctions, or has been damaged in any manner, in the event of this occurring telephone Burco using the helpline number for advice.
- Do not use accessories or attachments which are not recommended or sold by Burco Appliances as they can cause hazards.
- Do not use the appliance for any use other than to make coffee.
- Do not place on or near a hot gas or electric burner.
- Do not use abrasive cleaners on your machine as they may scratch the surface. Clean by wiping with a soft damp cloth.

SAVE THESE INSTRUCTIONS

Electrical requirements

Check that the voltage on the rating plate of your appliance corresponds with your house electricity supply which must be A.C. (Alternating Current).

Warning: This appliance must be earthed.

Should the fuse in the 13 amp plug require changing, a 13 amp BS1362 fuse must be fitted.

Fitting a plug

The mains lead of this appliance will already be fitted with a BS1363 13A plug. In the event of replacing a fuse, a 13 amp fuse approved by ASTA or BSI must be used.

If the socket outlets are not suitable for the plug supplied with this appliance, the plug should be removed and the appropriate one fitted. Moulded on plugs should be cut off. **When cut off, this plug is a shock hazard if inserted into a socket outlet and must therefore be disposed of safely.** An appropriate plug should be fitted as follows:

IMPORTANT: The wires in the mains lead are coloured in accordance with the following code:

Green-and-Yellow – Earth
Blue – Neutral
Brown – Live

As the colours in the mains lead may not correspond with the coloured markings identifying the terminals in your plug, proceed as follows:

The wire, which is coloured green-and-yellow, must be connected to the terminal in the plug which is marked with the letter E or the earth symbol \equiv or coloured green or green-and-yellow.

The wire, which is coloured blue, must be connected to the terminal which is marked with the letter N or coloured black or blue.

The wire, which is coloured brown, must be connected to the terminal which is marked with the letter L or coloured red or brown.

Make sure that the connections are tight and that there are no loose strands of

wire and no insulation trapped under the terminals. Tighten the clamp in the plug making sure that it grips the outer covering of the cord. In a 13A (BS 1363) fused plug, fit a 13A fuse. Tighten the plug cover securely.

If you are in any doubt, consult a qualified electrician.

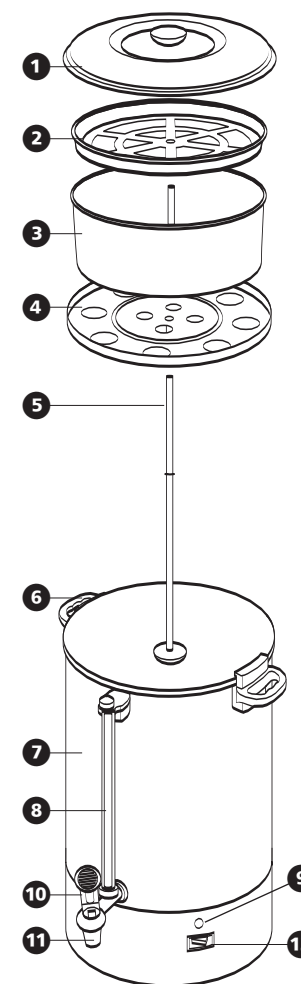
Features

- 1 Lid
- 2 Basket cover
- 3 Filter basket
- 4 Basket tray
- 5 Percolator tube
- 6 Safety locking handle
- 7 Urn body
- 8 Level indicator
- 9 Coffee ready neom
- 10 Tap
- 11 Spout
- 12 Power switch

Before first use

Remove all the packaging and retain it for future use but remember that packaging materials (plastic bags, polystyrene foam, etc.) are a potential source of danger, and must be kept out of the reach of children.

Wash the inside of the coffee percolater, cover and basket assembly with hot soapy water. Rinse thoroughly. IMPORTANT: Do not immerse coffee percolator in water or other liquid.



Using

- 1 Remove the lid by rotating so that the retaining lugs slide out from the handles.
- 2 Pour cool water into the urn to the desired level as seen in the water level indicator (minimum 25 cups).
- 3 Fill the filter basket 3 with medium or percolator ground coffee to the corresponding level marked on the inside of the filter basket:

8mm: 25 cups = 160–175g

Guarantee registration

Appliance model

Serial no.

Date of purchase

Customer name

Address

CUT HERE & DETACH

Please help us to further improve our products by ticking the main reason for purchase

Price Styling/Appearance

Features Previous Burco ownership

Dealer recommendation Service back-up

Other (please state)

Where did you buy your Burco appliance ?

Dealer/Retailer

Would you like more information on Burco products?

Yes No