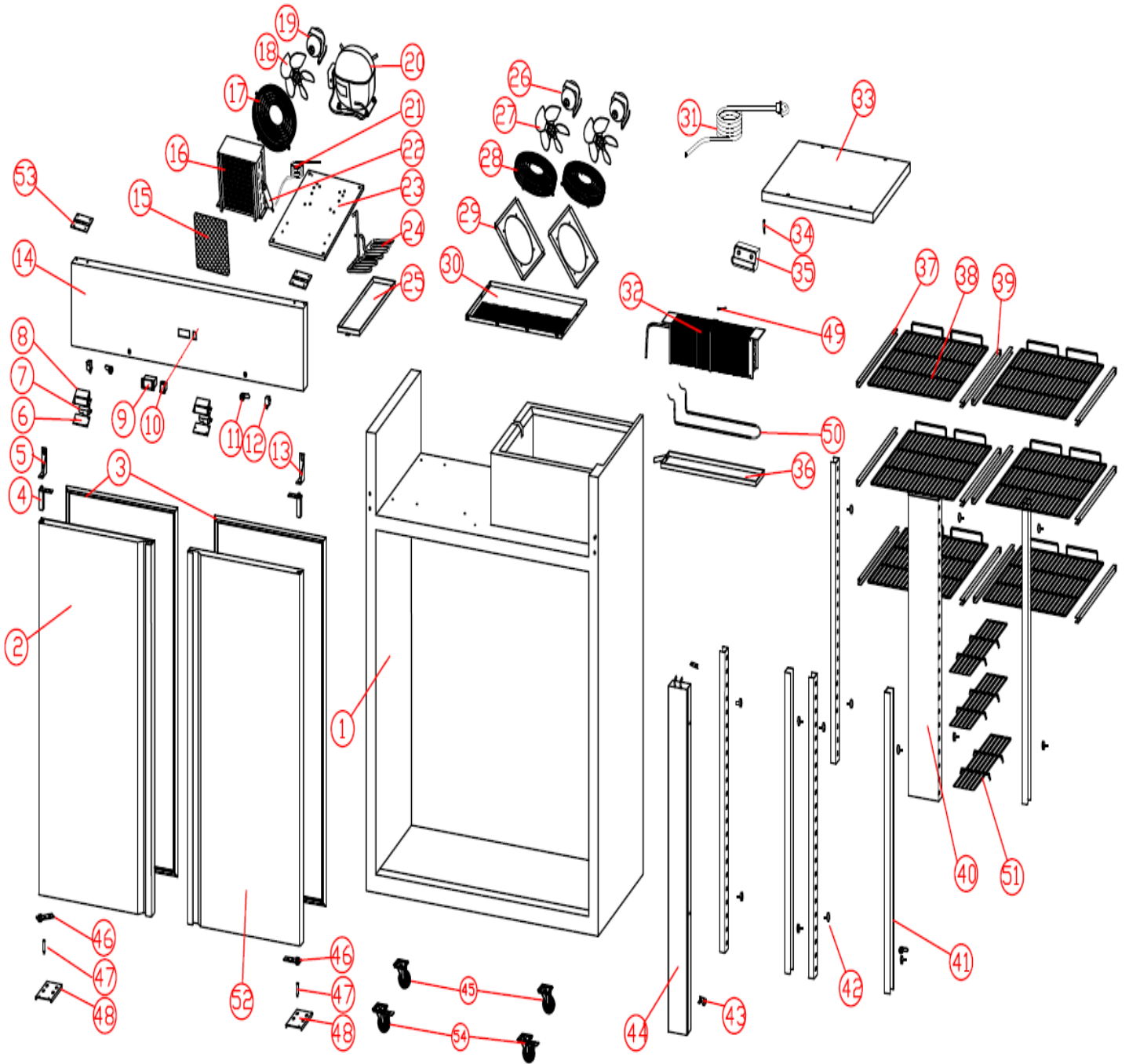


# BF2SS/BR2SS

## Exploded parts diagram

Image shown is a BF2SS \*







| Part Number      | Number | Description                           | Qty |
|------------------|--------|---------------------------------------|-----|
| ***              | 1      | Cabinet                               | 1   |
| X1-DOOR04        | 2      | Door (left) (BF2SS/BR2SS)             | 1   |
| X1-GASKET04      | 3      | Door Gasket (BF2SS/BR2SS)             | 2   |
| X1-HINGE10       | 4      | Spring Hinge (BF2SS/BR2SS)            | 2   |
| B1-HINGE51       | 5      | LH Upper Hinge                        | 1   |
| X1-COVER01       | 6      | Light Cover (BF2SS/BR2SS)             | 2   |
| X1-LED04         | 7      | LED light (BF2SS/BR2SS)               | 2   |
| X1-LIGHTHOLDERBR | 8      | Light Box (BF2SS/BR2SS)               | 2   |
| X1-CONTROLLER05  | 9      | Controller (BF2SS)                    | 1   |
| X1-CONTROLLER04  | 9      | Controller (BR2SS)                    | 1   |
| X1-SWITCH01      | 10     | Power Switch (BF2SS/BR2SS)            | 1   |
| X1-LOCK02        | 11     | Door Lock (BF2SS/BR2SS)               | 2   |
| X1-SWITCH02      | 12     | light/fan switch (BF2SS/BR2SS)        | 2   |
| X1-HINGE11       | 13     | RH Upper Hinge                        | 1   |
| X1-PANEL02       | 14     | Top Panel (BF2SS/BR2SS)               | 1   |
| ***              | 15     | Cond Filter                           | 1   |
| K8-COND05        | 16     | Condenser (BF2SS)                     | 1   |
| K8-COND03        | 16     | Condenser (BR2SS)                     | 1   |
| ***              | 17     | Cond Fan Guard                        | 1   |
| ***              | 18     | Cond Fan Blade                        | 1   |
| K8-FAN04         | 19     | Cond Fan Motor (BF2SS)                | 1   |
| X1-FAN02         | 19     | Cond Fan Motor (BR2SS)                | 1   |
| X1-COMP09        | 20     | Compressor (BF2SS)                    | 1   |
| X1-COMP08        | 20     | Compressor (BR2SS)                    | 1   |
| K8-CAPILLARY01   | 21     | Capillary (BF2SS)                     | 1   |
| K8-CAPILLARY02   | 21     | Capillary (BR2SS)                     | 1   |
| ***              | 22     | Drier                                 | 1   |
| ***              | 23     | Cooling Unit Board (BF2SS/BR2SS)      | 1   |
| ***              | 24     | Vaporising Coil (BF2SS/BR2SS)         | 1   |
| ***              | 25     | Vaporising Tray                       | 1   |
| X1-FAN05         | 26     | Evap fan (BF2SS/BR2SS)                | 2   |
| ***              | 27     | Evap Fan Blade                        | 2   |
| ***              | 28     | Evap Fan Guard                        | 2   |
| ***              | 29     | Motor Board                           | 2   |
| ***              | 30     | Fan Plate                             | 1   |
| ***              | 31     | Power Cord                            | 1   |
| X1-EVAP10        | 32     | Evaporator (BF2SS)                    | 1   |
| X1-EVAP08        | 32     | Evaporator (BR2SS)                    | 1   |
| ***              | 33     | Top Cover                             | 1   |
| K8-PROBE02       | 34     | Sensor (BF2SS/BR2SS)                  | 1   |
| ***              | 35     | sensor clip                           | 1   |
| ***              | 36     | Evap Drip Tray                        | 1   |
| K8-GUIDE01       | 37     | Left Shelf Guide (pair) (BF2SS/BR2SS) | 8   |

|              |    |   |    |
|--------------|----|---|----|
| X1-SHELF06   | 38 | Shelf (BF2SS/BR2SS)                     | 8  |
| K8-GUIDE01   | 39 | Right Shelf Guide (pair) (BF2SS/BR2SS)  | 8  |
| ***          | 40 | Back Ladder Rack (BF2SS/BR2SS)          | 1  |
| ***          | 41 | Ladder Rack (BF2SS/BR2SS)               | 6  |
| ***          | 42 | Ladder Rack Screw (BF2SS/BR2SS)         | 16 |
| ***          | 43 | Centre Mullion Connection (BF2SS/BR2SS) | 2  |
| ***          | 44 | Centre Mullion (BF2SS/BR2SS)            | 1  |
| ***          | 45 | Castor (Unbraked) (BF2SS/BR2SS)         | 2  |
| X1-HINGEBUSH | 46 | Bush (BF2SS/BR2SS)                      | 2  |
| X1-HINGEPIN  | 47 | Hinge Pin (BF2SS/BR2SS)                 | 2  |
| X1-HINGE12   | 48 | RH Bottom Hinge                         | 2  |
| K8-PROBE02   | 49 | Evap Sensor (BF2SS)                     | 1  |
| X1-HEATER02  | 50 | defrost heater (BF2SS)                  | 1  |
| X1-DOOR04    | 52 | Door (Right) (BF2SS/BR2SS)              | 1  |
| ***          | 53 | Panel Connect                           | 2  |
| ***          | 54 | Castor (Braked)                         | 2  |

\*\*\* Please contact Spares for assistance \*\*\*

\*Other model variant available;

Glass Door, BF2SSCR

Glass Door, BR2SSCR