

INSTRUCTION REF: IN119
ISSUE No. 3
DATE 12/05/2014
Page 1 of 13

INSTRUCTIONS

MODELS: NP2H / NP4H / N1870 / N1871 HOB UNITS

SAFETY INSTRUCTIONS

TECHNICAL DATA

INSTALLATION INSTRUCTIONS

OPERATION INSTRUCTIONS

MAINTENANCE INSTRUCTIONS

EXPLODED VIEW / PARTS LIST

FAULT DIAGNOSTICS

WIRING DIAGRAM

WARRANTY INFORMATION

DISPOSAL INFORMATION

Customer Information

MODEL NUMBER: _____
SERIAL NUMBER: _____
PURCHASE DATE: _____
DISTRIBUTOR: _____

INSTRUCTION REF: IN119
ISSUE No. 3
DATE 12/05/2014
Page 2 of 13

SAFETY INSTRUCTIONS

IMPORTANT, PLEASE READ INSTRUCTIONS FULLY BEFORE USE

This appliance has been designed to heat pans and therefore during its use parts of the appliance will become very hot. All personnel must be given sufficient supervision and training in the safe use of this appliance.

ALL APPLIANCES OTHER THAN THOSE FITTED WITH A SEALED MOULDED PLUG MUST BE FITTED BY A QUALIFIED ELECTRICIAN, IN ACCORDANCE WITH CURRENT REGULATIONS.

The unit should be installed in compliance with the **INSTALLATION INSTRUCTIONS** and the **NATIONAL REGULATIONS** in force at the time. Particular attention should be paid to the **Health and Safety at Work Act**.

To prevent shocks, all appliances whether gas or electric, must be earthed.

To avoid scratching the highly polished exterior surface of this equipment whilst in transit, the protective film on the exterior surfaces has **NOT** been removed.

It is **IMPORTANT** that this protective film is peeled off before the equipment is used.

ENSURE THE APPLIANCE IS ISOLATED FROM THE POWER SUPPLY BEFORE INSTALLING, CLEANING OR MAINTAINING THE APPLIANCE

ALL MODELS

This product has been designed, constructed and marketed in compliance with safety requirements of :

EEC Directive “Low voltage” 73/23;
EEC Directive 93/68.

This product is suitable for contact with foodstuffs, and complies with **EEC Directive 89/109**.

The product(s) stated above are designed and built to comply with the following standards:
BS EN 60335-1

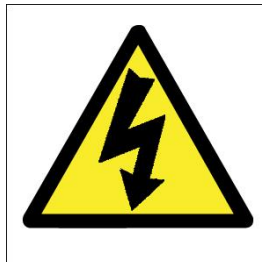
INSTRUCTION REF: IN119
 ISSUE No. 3
 DATE 12/05/2014
 Page 3 of 13

TECHNICAL DATA

	NP2H	NP4H
Nominal Voltage	240 v ~ 50 hz	240 v ~ 50 hz / 415 3Ph + N
Nominal Current	12.5 Amps	30 Amps / 12.5A , 8.8A
Nominal Wattage	3000 W	7000 W
Dimensions (mm)	300 x 600 x 310	600 x 600 x 310
Heat Pad Dimensions	185 Diameter	185 Diameter
Weight (kg)	15	23

	N1870	N1871
Nominal Voltage	240 v ~ 50 hz	240 v ~ 50 hz / 415 3Ph + N
Nominal Current	12.5 Amps	30 Amps / 12.5A , 8.8A
Nominal Wattage	3000 W	7000 W
Dimensions (mm)	300 x 600 x 217	600 x 600 x 217
Heat Pad Dimensions	185 Diameter	185 Diameter
Weight (kg)	14	22

INSTALLATION INSTRUCTIONS



ELECTRICAL INSTALLATION

**ALL APPLIANCES OTHER THAN THOSE FITTED WITH A SEALED MOULDED PLUG
 MUST BE FITTED BY A QUALIFIED ELECTRICIAN, IN ACCORDANCE WITH
 CURRENT REGULATIONS.**

INSTRUCTION REF: IN119

ISSUE No. 3

DATE 12/05/2014

Page 4 of 13

OPERATING INSTRUCTIONS

1. Ensure all controls are in the off position, then turn on the power supply
2. Turn the appropriate energy regulator to the desired setting 3 for boiling and reduce to simmer, the red lamp for that particular hob will illuminate to indicate that there is power to the hob and that the hob is on.

FOR MAXIMUM EFFICIENCY USE GOOD QUALITY PANS OF THE CORRECT SIZE, AS TOTAL COVERAGE OF THE PLATE ENSURES ANY SPILLAGE WILL FLOW EASILY
CLEANING AND MAINTENANCE

ENSURE THE APPLIANCE IS ISOLATED FROM THE POWER SUPPLY BEFORE INSTALLING, CLEANING OR MAINTAINING THE APPLIANCE

Ensure that the appliance has cooled sufficiently.

Cleaning should be carried every day. Clean the external surfaces of the appliance with a damp cloth. Avoid using abrasive materials.

CAUTION: Never clean the appliance with water jets.

Appliance should be annually P.A.T (Portable Appliance Testing) tested for continued electrical safety.

MAINTENANCE INSTRUCTIONS

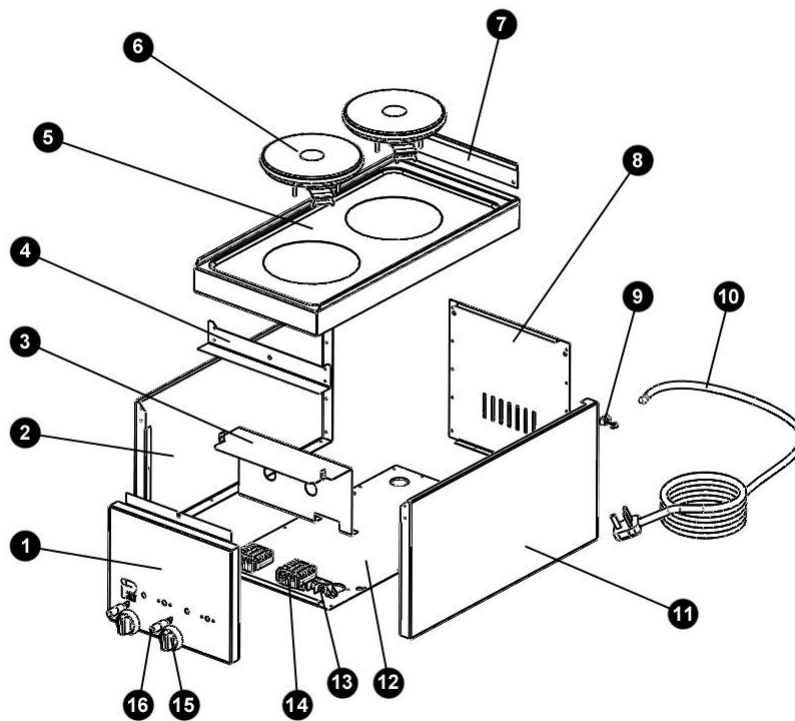
MAINTENANCE AND SERVICE MUST ONLY BE UNDERTAKEN BY A QUALIFIED ELECTRICIAN / ENGINEER

IF THE SUPPLY CORD BECOMES DAMAGED, IT MUST BE REPLACED BY THE MANUFACTURER, ITS SERVICE AGENT OR SIMILARLY QUALIFIED PERSONS IN ORDER TO AVOID A HAZARD

INSTRUCTION REF: IN119
ISSUE No. 3
DATE 12/05/2014
Page 5 of 13

EXPLODED VIEW

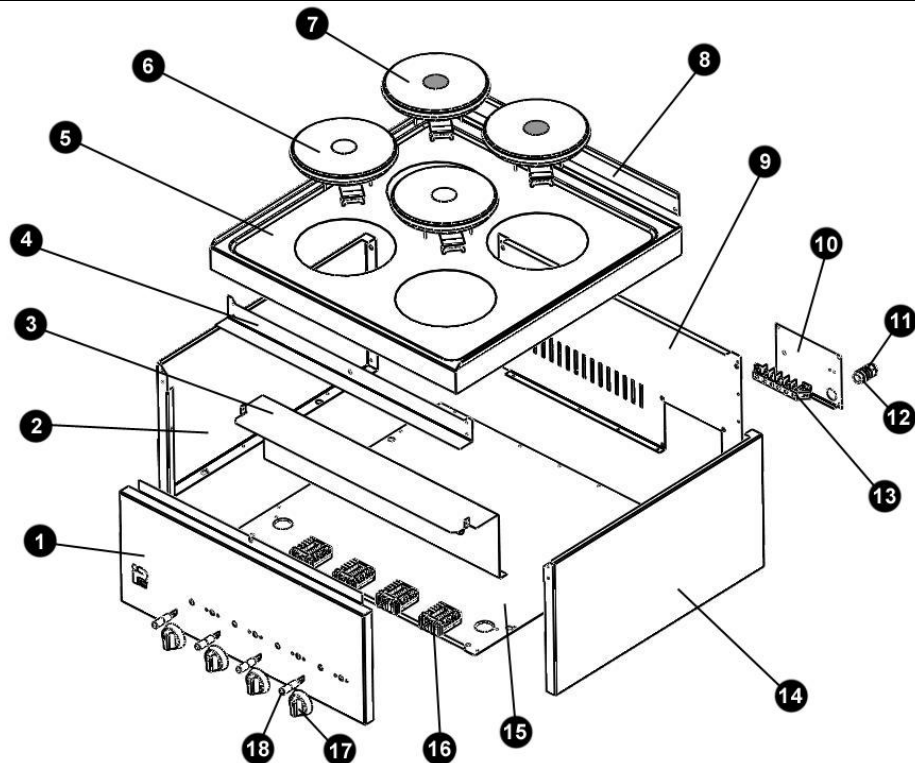
NP2H Exploded View



INSTRUCTION REF: IN119
 ISSUE No. 3
 DATE 12/05/2014
 Page 6 of 13

PARTS LIST

NO.	Description	NP2H Part Codes	N1870 Part Codes
1	*Fascia	NO CODE	NO CODE
2	*LH Side Panel	NO CODE	NO CODE
3	*Wire Guard	NO CODE	NO CODE
4	*Front Support	NO CODE	NO CODE
5	*Top	NO CODE	NO CODE
6	Heat Pad	PLHT18463	PLHT18463
7	*Back Hook	NO CODE	NO CODE
8	*Back Panel	NO CODE	NO CODE
9	Strain Relief Bush	BUSR06003	BUSR06003
10	Mains Cable	MLEAD25	MLEAD25
11	*RH Side Panel	NO CODE	NO CODE
12	*Base	NO CODE	NO CODE
13	Terminal Block	TB3POLETB	TB3POLETB
14	Selector Switch	SWHT27266	SWHT27266
15	Control Knob	KNOBPHEN	KNOBPHEN
16	Red Neon	LNRE2211P	LNRE2211P



NP4H Exploded View

INSTRUCTION REF: IN119

ISSUE No. 3

DATE 12/05/2014

Page 7 of 13

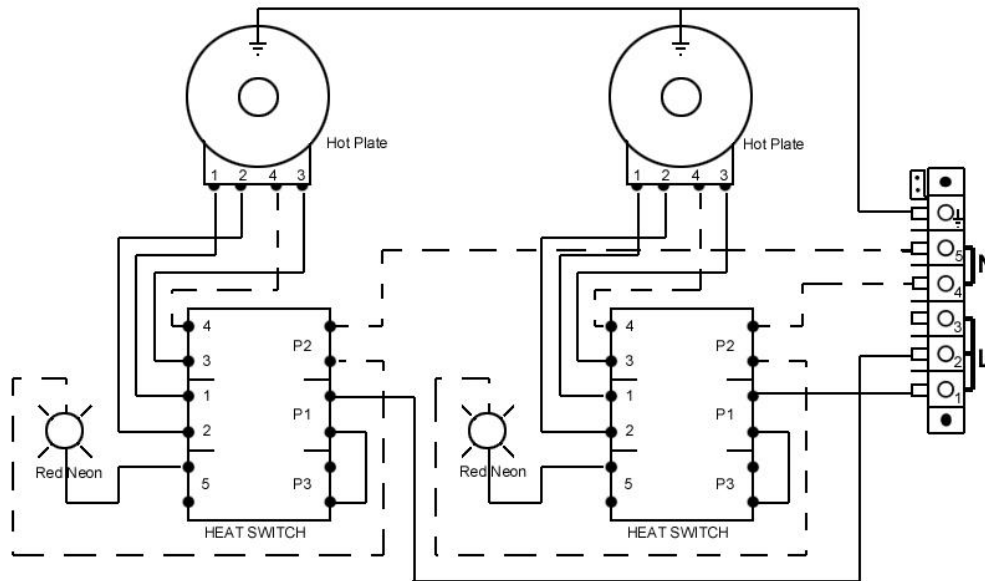
PARTS LIST

NO.	Description	NP4H Part Codes	N1871 Part Codes
1	*Fascia	NO CODE	NO CODE
2	*LH Side Panel	NO CODE	NO CODE
3	*Wire Guard	NO CODE	NO CODE
4	*Front Support	NO CODE	NO CODE
5	*Top	NO CODE	NO CODE
6	Heat Pad 1.5kW	PLHT18463	PLHT18463
7	Heat Pad 2kW (Red Spot in centre)	PLHT02000	PLHT02000
8	*Back Hook	NO CODE	NO CODE
9	*Back Panel	NO CODE	NO CODE
10	*Terminal Plate	NO CODE	NO CODE
11	Gland	GLAND0M16	GLAND0M16
12	Lock Nut	LOCKNTM16	LOCKNTM16
13	Terminal Block	TB6POLETB	TB6POLETB
14	*RH Side Panel	NO CODE	NO CODE
15	*Base	NO CODE	NO CODE
16	Selector Switch	SWHT27266	SWHT27266
17	Control Knob	KNOBPHEN	KNOBPHEN
18	Red Neon	LNRE2211P	LNRE2211P

INSTRUCTION REF: IN119
ISSUE No. 3
DATE 12/05/2014
Page 8 of 13

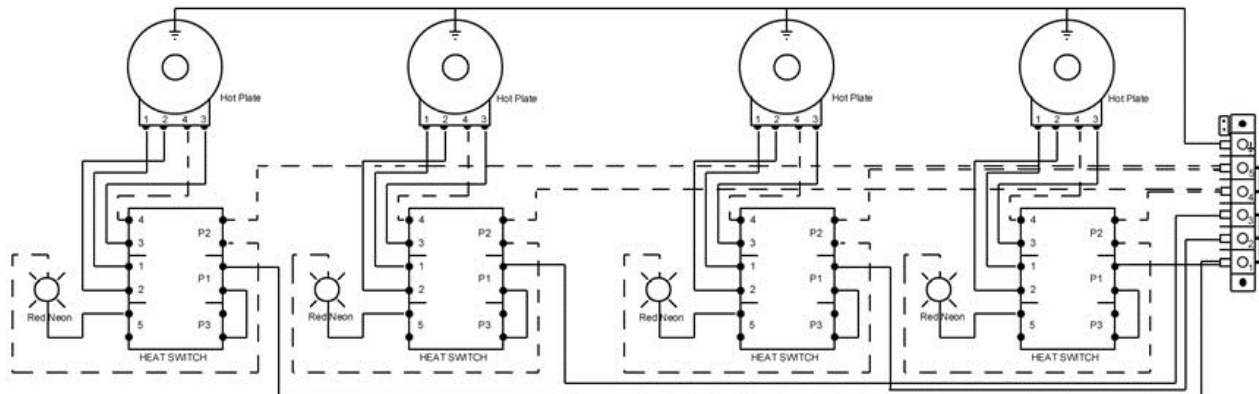
WIRING DIAGRAM

NP2H / N1870 Diagram



INSTRUCTION REF: IN119
ISSUE No. 3
DATE 12/05/2014
Page 9 of 13

NP4H / N1871 Diagram



WARRANTY INFORMATION

WARRANTY POLICY

- The manufacturers warranty is only valid in the UK mainland & Northern Ireland, Western Isles, Inner Hebrides and Islands are parts only warranty.
- All service calls will be carried out between the hours of 8.00am – 5.00pm Monday to Friday only.
- We accept no responsibility for delays in replacing or repairing the equipment due to circumstances beyond our control.
- Your warranty can be immediately invalid if the installation of the equipment has not been installed in accordance with the manufacturers' instruction. (See installation details). Also the miss-use, alteration or unauthorised repairs of the equipment will invalidate the warranty.
- During the warranty period it is at Parrys Group Ltd discretion to repair or replace the equipment.
- Warranty only applies if the equipment has been used in a professional manor following the manufacturers' instructions and maintenance guide lines.
- The warranty covers defects in the material and components failure only we are not liable for trading loss, loss of perishable items, water damage, loss due to injury or fire damage.

INSTRUCTION REF: IN119
ISSUE No. 3
DATE 12/05/2014
Page 10 of 13

WARRANTY REQUEST

- Please ensure you have referred to the manufacturers' instruction before placing a warranty call with your distributor.
- Please ensure you obtain the model number before calling.
- Please ensure you have read the section not covered under warranty to avoid any unnecessary warranty charges.
- If the problem with the machine can not be resolved please contact the company that supplied you the machine.

(SERVICE CALLS CANNOT BE PLACED DIRECT WITH PARRY GROUP LTD)

NOT COVERED UNDER WARRANTY

- Installed incorrectly
- Fault due to poor maintenance.
- Resetting of equipment or circuit breakers.
- Abuse of the equipment
- Blockages eg, drains,
- Lime scale related issues
- Access arranged for service call and engineer refused access or customer not there.
- No faults with the machine.
- Setting up of equipment.
- Faulty electrics – eg, customers plug socket, plug, wiring, junction box fault, wrong fuse.
- Any damages caused by the customer.

All of the above are not covered under our warranty policy. Any costs incurred because of the above will be forwarded to the parties responsible for placing the call.

Failure to pay any warranty charges will result in the customers warranty been put on hold until the bill has been settled.

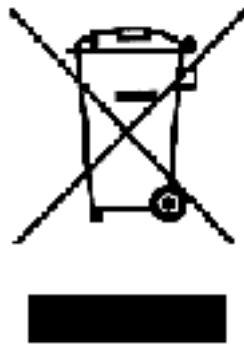
Any issues regarding the raised charges should be put in writing to our warranty department for further investigation.

INSTRUCTION REF: IN119
ISSUE No. 3
DATE 12/05/2014
Page 11 of 13

DISPOSAL INFORMATION

This appliance is marked according to the **European directive 2002/96/EC on Waste Electrical and Electronic Equipment (WEEE)**.

By ensuring this product is disposed of correctly, you will help prevent potential negative consequences for the environment and human health, which could otherwise be caused by inappropriate waste handling of this product.



A symbol on the product, or on the documents accompanying the product, indicates that this appliance may not be treated as household waste. Instead it shall be handed over to the applicable collection point for the recycling of electrical and electronic equipment.

Disposal must be carried out in accordance with local environmental regulations for waste disposal.

For more detailed information about treatment, recovery and recycling of this product, please contact your local city office, your household waste disposal service or the shop where you purchased the product.

INSTRUCTION REF: IN119
ISSUE No. 3
DATE 12/05/2014
Page 12 of 13

Parry Catering recognises our obligations to the **EU DIRECTIVE** covering the waste disposal of electrical and electronic equipment (**WEEE**), Parry Catering are committed to this policy in order to help conserve the environment.

At the end of this unit's life you **MUST** dispose of it in an approved manner. You **MUST** not discard the unit or place it in the refuse bin.

You have several options:

- a) Take the unit to an approved WEEE scheme company, there will be one in your area.
- b) Take the unit to an approved waste disposal site; many sites are managed by your local authority.

Contact the Parry Group Ltd on the Sales number 01332 875544 for further information on disposal.

There will probably be a charge for this service which will depend on the physical location of the unit and size you will be given a collection price for a curb side collection based on commercial rates prevailing at the time.

It should be noted that the unit to be collected should be suitably packed and sealed to prevent dangerous gases and fluids from escaping. The condition of the unit must also be clean to comply with health and safety regulations.

INSTRUCTION REF: IN119
ISSUE No. 3
DATE 12/05/2014
Page 13 of 13