



KitchenAid

7 Speed Cordless Hand Mixer 5KHMB732

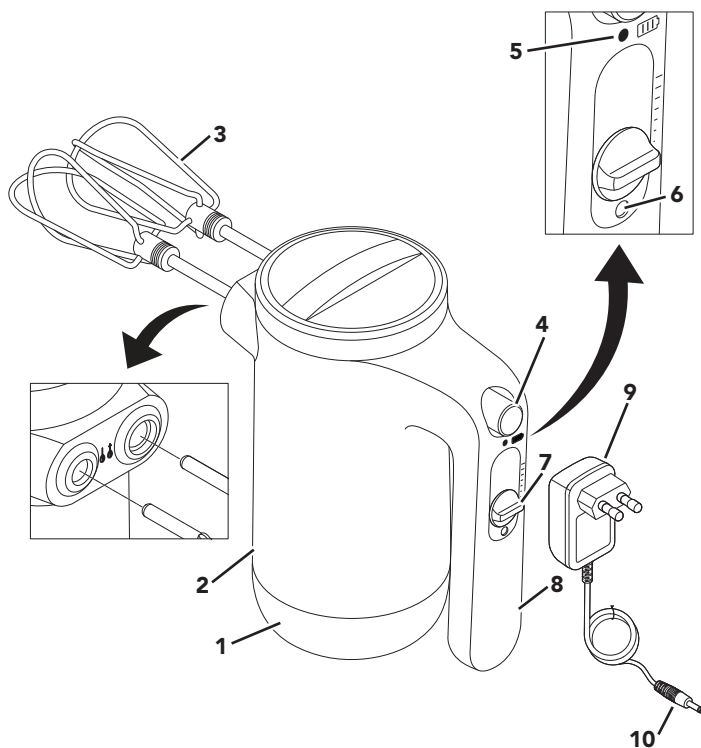


EN	Use & Care manual	2	NO	Håndbok for bruk og vedlikehold	99
DE	Gebrauchs- und Pflegeanleitung	13	FI	Käyttö- ja huolto-opas	109
FR	Manuel d'utilisation et d'entretien	25	DA	Vejledning til anvendelse og vedligehold	119
IT	Manuale d'uso e manutenzione	39	IS	Notenda & Meðhöndlunar handbók	129
NL	Gebruiks- en onderhoudshandleiding	49	RU	Руководство по эксплуатации и уходу	139
ES	Manual de uso y cuidado	59	PL	Instrukcja obsługi i konserwacji	149
PT	Manual de utilização e manutenção	69	CS	Návod k použití a údržbě	159
EL	Εγχειρίδιο Χρήσης και Φροντίδας	79	TR	Kullanım ve Bakım kılavuzu	169
SV	Handbok för skötsel och användning	89	AR	دليل الاستخدام والعناية	1





PARTS AND FEATURES



- | | | | |
|---|--------------------------|----|---------------------|
| 1 | Upright Stance | 6 | Charging Port |
| 2 | Motor Body | 7 | Speed Controller |
| 3 | Beaters | 8 | Handle |
| 4 | Eject Button | 9 | Charger Adapter |
| 5 | Battery Status Indicator | 10 | Charger Adapter Pin |





PRODUCT SAFETY

Your safety and the safety of others are very important.

We have provided many important safety messages in this manual and on your appliance. Always read and obey all safety messages.



This is the safety alert symbol.

This symbol alerts you to potential hazards that can kill or hurt you and others.

All safety messages will follow the safety alert symbol and either the word “DANGER” or “WARNING.” These words mean:

 **DANGER**

You can be killed or seriously injured if you don't immediately follow instructions.

 **WARNING**

You can be killed or seriously injured if you don't follow instructions.

All safety messages will tell you what the potential hazard is, tell you how to reduce the chance of injury, and tell you what can happen if the instructions are not followed.

IMPORTANT SAFEGUARDS

When using electrical appliances, basic safety precautions should always be followed, including the following:

1. Read all instructions. Misuse of appliance may result in personal injury.
2. To protect against risk of electrical shock, do not put the Motor Body of Cordless Hand Mixer, Charger adapter, cord, or electrical plug in water or other liquid.
3. European Union only: Appliances can be used by persons with reduced physical, sensory or mental capabilities or lack of experience and knowledge if they have been given supervision or instruction concerning use of the appliance in a safe way and understand the hazards involved. Children shall not play with the appliance.
4. European Union only: This appliance shall not be used by children. Keep the appliance and its cord out of reach of children. Cleaning and user maintenance shall not be made by children without supervision.
5. This appliance is not intended for use by persons (including children) with reduced physical, sensory, or mental capabilities, or lack of experience and knowledge, unless they are closely supervised and instructed concerning use of the appliance by a person responsible for their safety.
6. Close supervision is necessary when any appliance is used by or near children.
7. Children should be supervised to ensure that they do not play with the appliance.
8. Turn the appliance OFF when not in use, before assembling or disassembling parts and before cleaning. To unplug the charger, grasp the plug and pull from the outlet. Never pull from the power cord.
9. Do not use an extension cord. Plug charger directly into an electric outlet.
10. If the supply cord is damaged, it must be replaced by a special cord or assembly available from the manufacturer or its service agent.



PRODUCT SAFETY

11. **WARNING:** For the purposes of recharging the battery, only use the detachable supply unit provided with this appliance. Do not attempt to use this charger with any other product. Likewise, do not attempt to charge this appliance with any other charger.
12. The appliance contains batteries that are non-replaceable.
13. Do not incinerate this appliance even if it is severely damaged. The batteries can explode in a fire.
14. Avoid contacting moving parts. Keep hands, hair clothing, as well as spatulas and other utensils away from Beaters and accessories during operation to reduce the risk of injury to persons or damage to the Cordless Hand Mixer.
15. Do not operate any appliance or Charger adapter with a damaged cord or plug or after the appliance malfunctions, or is dropped or damaged in any manner. Contact the manufacturer at their customer service telephone number for information on examination, repair, or adjustment.
16. The use of attachments not recommended or sold by KitchenAid may cause fire, electric shock, or injury.
17. Do not use the appliance outdoors.
18. Do not let cord hang over edge of table or counter.
19. Never leave the appliance unattended while it is in operation.
20. Do not let cord contact hot surface, including the stove.
21. Remove Beaters or accessories from the Cordless Hand Mixer before washing.
22. Refer to the "Care and Cleaning" section for instructions on cleaning the surfaces in contact with food.
23. This appliance is intended to be used in household and similar applications such as:
 - staff kitchen areas in shops, offices and other working environments;
 - farm houses;
 - by clients in hotels, motels and other residential type environments;
 - bed and breakfast type environments.

SAVE THESE INSTRUCTIONS





PRODUCT SAFETY

ELECTRICAL REQUIREMENTS

Charger Adapter:

Input: 220-240 V~ 50-60 Hz

Cordless Hand Mixer:

Voltage: 12 Volts

NOTE: If the plug does not fit fully in the outlet, contact a qualified electrician.
Do not modify the plug in any way.

LITHIUM-ION BATTERY OPERATED PRODUCT DISPOSAL


Always dispose the battery operated products according to federal, state, and local regulations. Contact a recycling agency in your area for recycling locations.

ELECTRICAL EQUIPMENT WASTE DISPOSAL

Scrapping the product

This appliance is marked in compliance with European Directive 2012/19/EU, Waste Electrical and Electronic Equipment (WEEE).

- By ensuring this product is disposed of correctly, you will help prevent potential negative consequences for the environment and human health, which could otherwise be caused by inappropriate waste handling of this product.

The symbol  on the product or on the accompanying documentation indicates that it should not be treated as domestic waste but must be taken to an appropriate collection center for the recycling of electrical and electronic equipment.

For more detailed information about treatment, recovery and recycling of this product, please contact your local city office, your household waste disposal service or the shop where you purchased the product.

DECLARATION OF CONFORMITY

This appliance has been designed, constructed and distributed in compliance with the safety requirements of EC Directives: 2014/35/EU, 2014/30/EU, 2009/125/EC and 2011/65/EU (RoHS Directive).



GETTING STARTED

BEFORE FIRST USE

1. Charge the battery until the Battery Status Indicator turns solid green.
2. Clean all the parts. (see "Care and Cleaning" section).
3. Remove all packaging materials, if present.

BATTERY STATUS

Battery Status	% Battery Status	Full Charge*	Quick Charge**
Green	30 % to 100 %	200 cookies	1 cake batter
Yellow	15 % - 30 % (Consider Charging)		
Red	Lower than 15 % (Need to charge soon)		

*Full Charge:

The Cordless Hand Mixer will be fully charged in 2 hours. The Battery Status Indicator pulses when it charges and turns to solid green with a full charge.

The Cordless Hand Mixer will prepare approximately 200 cookies, based on 4 batches of chocolate chip cookies when following the recommended battery maintenance.

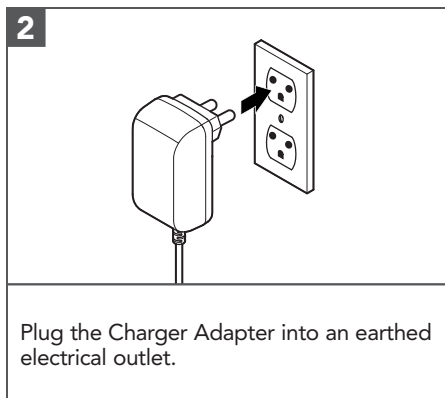
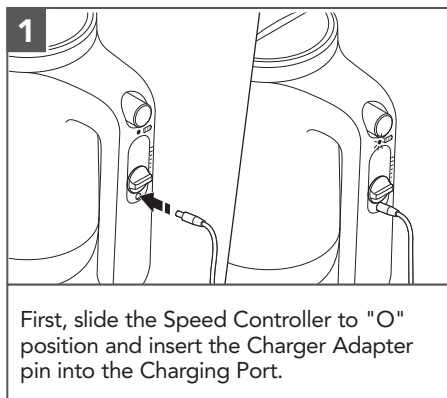
**Quick Charge:

In 10 minutes the Cordless Hand Mixer will quick charge. The Cordless Hand Mixer will stir up a cake batter recipe with one quick charge when following the recommended battery maintenance.

NOTE: Make sure to charge the battery, when the Battery Status Indicator is yellow.

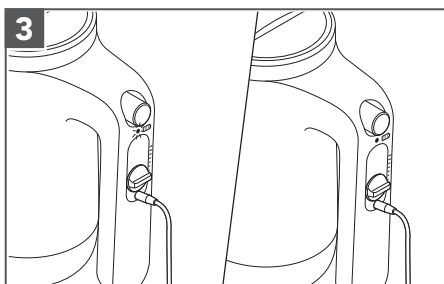
NOTE: It is best to store the Cordless Hand Mixer at room temperature.

BATTERY CHARGING



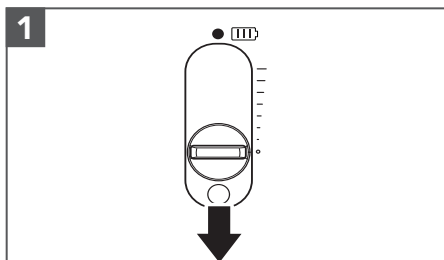


BATTERY CHARGING

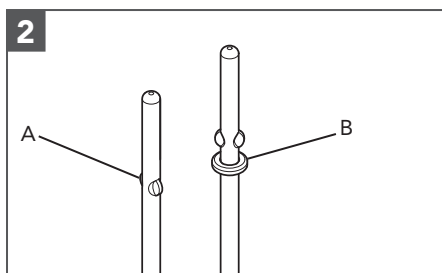


The Battery Status Indicator pulses when it charges. It will be fully charged in 2 hours and the Battery Status Indicator turns solid green.

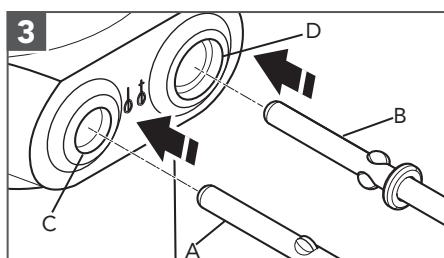
PRODUCT ASSEMBLY



IMPORTANT: Make sure that the Speed Controller is at "0" position before attaching and removing Beaters.



There are two Beaters. One is without a collar (A) and another with a collar (B).



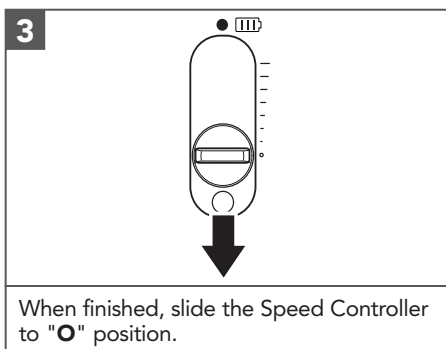
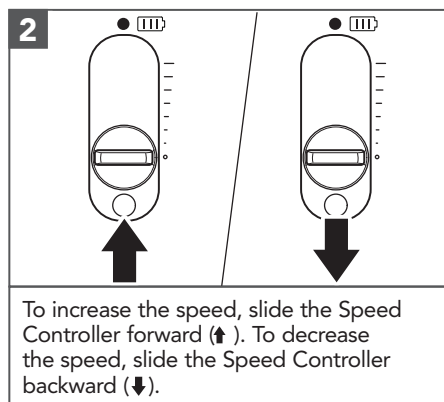
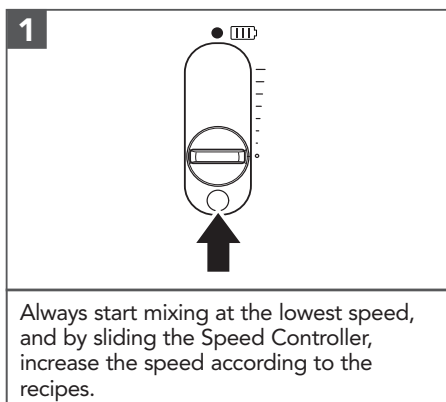
Insert the Beaters without a collar (A) into the smaller opening (C) and Beaters with a collar (B) into the larger opening (D). Align and push to lock into place. Both the Beaters will click in.





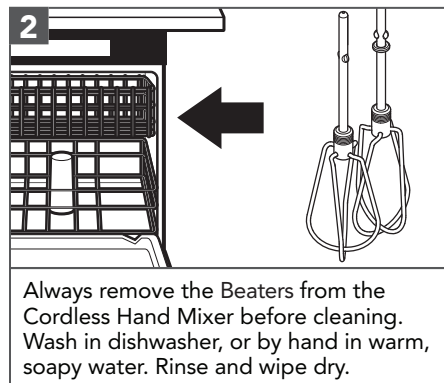
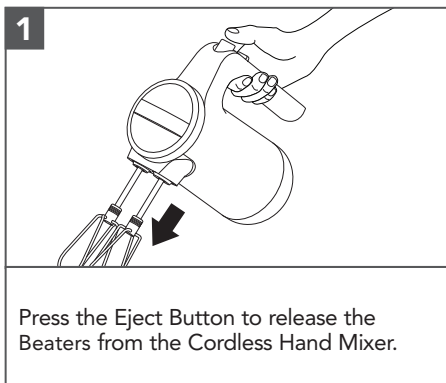
PRODUCT USAGE

NOTE: Make sure the Cordless Hand Mixer is charged before use. Do not operate continuously for more than 1 minute.



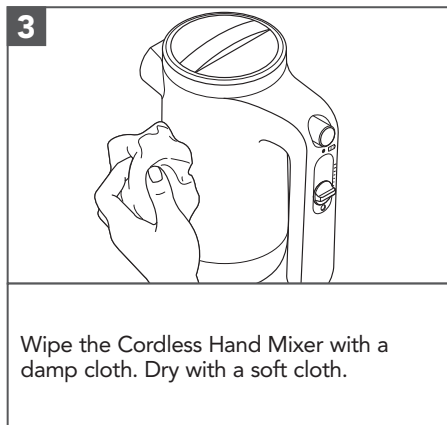
CARE AND CLEANING

IMPORTANT: Make sure the Speed Controller is at "O" before attaching or removing Beaters.





CARE AND CLEANING



NOTE: To avoid damage to the Cordless Hand Mixer, do not immerse in water.

For detailed information about the Cordless Hand Mixer:

Visit www.kitchenaid.eu for additional instructions with videos, inspiring recipes, and tips on how to use and clean your Cordless Hand Mixer.

TROUBLESHOOTING GUIDE

Problem	Solution
If the Cordless Hand Mixer fails to start:	Check if the product is charged. Charge the battery when the Battery Status Indicator is red or when the Battery is completely drained.
If the Cordless Hand Mixer is not getting charged:	If you have a circuit breaker box, make sure that the circuit is closed.
If the problem cannot be corrected:	See the "Terms of KitchenAid Guarantee ("Guarantee")" sections. Do not return the Cordless Hand Mixer to the retailer. Retailers do not provide service.



TERMS OF KITCHENAID GUARANTEE ("GUARANTEE")

Covering U.K. - Ireland - South Africa - UAE

KitchenAid Europa, Inc., Nijverheidslaan 3, Box 5, 1853 Strombeek-Bever, Belgium ("Guarantor") grants the end-customer, who is a consumer, a Guarantee pursuant to the following terms.

FOR U.K.:

The Guarantee applies in addition to and does not limit or affect the statutory warranty rights of the end-customer against the seller of the product. In summary, the Consumer Rights Act 2015 says products must be as described, fit for purpose and of satisfactory quality. During the expected lifespan of your product your legal rights entitle you to the following:

- Up to 30 days: if your product is faulty, then you can get an immediate refund.
- Up to six months: if your product can't be repaired or replaced, then you're entitled to a full refund, in most cases.
- Up to six years: if your product does not last a reasonable length of time you may be entitled to some money back.

These rights are subject to certain exceptions. For detailed information please visit the Citizens Advice website www.adviceguide.org.uk or call 03454 04 05 06.

FOR IRELAND:

The Guarantee applies in addition to and does not limit or affect the statutory warranty rights of the end-customer against the seller of the product under the European Communities (Certain Aspects of the Sale of Consumer Goods and Associated Guarantees Regulations 2003 (S.I. No. 11/2003)) and other enactments governing the sale of consumer goods.

FOR SOUTH AFRICA:

The Guarantee applies in addition to and does not limit or affect the statutory warranty rights of the end-customer against the seller of the product. In summary, the Consumer Protection Act, 2008 says that products must be: (i) reasonably suitable for the purpose for which they are intended; (ii) in good working order, of good quality and free of any defects; (iii) useable and durable for a reasonable period of time, having regard to the use to which they would normally be put and to all the surrounding circumstances; and (iv) in compliance with any applicable standards or any other public regulations.

During the expected lifespan of your product and where the products are not purchased online, your legal rights will entitle you to the following:

- You will be entitled to a full refund, if you did not have the opportunity to examine the product before delivery and if you rejected delivery of the product on the basis that the type and quality of the product was not as reasonably expected or did not reasonably conform to the material specifications.
- Within 5 business days after delivery: you may rescind your purchase and request a refund, if your purchase resulted from direct marketing.
- Within 10 business days after delivery: you will be entitled to a full refund, if it is found that the product was unsuitable for a particular purpose specifically communicated to you by the Guarantor.
- Within 15 business days after delivery: you will be entitled to a refund if: (i) the product was not delivered to you; or (ii) if you returned the product to the Guarantor.
- Within 6 months after delivery: you will be entitled to a refund or a replacement product, if the product is defective or fails to operate in terms of its specifications.





TERMS OF KITCHENAID GUARANTEE ("GUARANTEE")

Where you have purchased a product online your legal rights will be governed by the Electronic Communications and Transactions Act, 2002 and you will be entitled to the following:

- Within 7 days after conclusion of the transaction or after delivery: you may cancel your purchase without reason and without penalty.
- Within 30 days of the date of cancellation of the transaction: you will be entitled to receive a refund, if you have already made payment.
- You will only be liable for the direct costs of returning the product to the Guarantor.

FOR UAE:

The Guarantee applies in addition to and does not limit or affect the statutory warranty rights of the end-customer against the seller of the product.

1) SCOPE AND TERMS OF THE GUARANTEE

a) The Guarantor grants the Guarantee for the products mentioned under Section 1.b) which a consumer has purchased from a seller or a company of the KitchenAid-Group within the following countries: U.K., Ireland, or South Africa, or the United Arab Emirates (UAE).

b) The Guarantee period depends on the purchased product and is as follows:

5KHMB732 Two years full guarantee from date of purchase.

c) The Guarantee period commences on the date of purchase, i.e. the date on which a consumer purchased the product from a dealer or a company of the KitchenAid-Group.

d) The Guarantee covers the defect-free nature of the product.

e) The Guarantor shall provide the consumer with the following services under this Guarantee, at the choice of the Guarantor, if a defect occurs during the Guarantee period:

- Repair of the defective product or product part, or
- Replacement of the defective product or product part. If a product is no longer available, the Guarantor is entitled to exchange the product for a product of equal or higher value.

f) If the consumer wishes to make a claim under the Guarantee, the consumer has to contact the country specific KitchenAid service centres or the Guarantor directly at KitchenAid Europa, Inc. Nijverheidslaan 3, Box 5, 1853 Strombeek-Bever, Belgium;

Email-Address U.K.: CONSUMERCARE.UK@kitchenaid.eu

Email-Address IRELAND: CONSUMERCARE.IE@kitchenaid.eu

Toll Free Number U.K. & IRELAND: **00 800 381 040 26**

FOR SOUTH-AFRICA:

Our local KitchenAid Distributor:

KitchenAid Africa
PO Box 52102
V&A Waterfront
Cape Town
8002





TERMS OF KITCHENAID GUARANTEE ("GUARANTEE")

Contact our distributor:

Telephone: +27 21 555 0700

You can contact our Customer Service Centre for Small Domestic Appliances from 8.30 am to 1.00pm and from 1.30 pm to 5.00 pm or write to us at the following address: hello@kitchenaidafrica.com

FOR UAE:

AL GHANDI ELECTRONICS.

POST BOX NO. 9098,

DUBAI, UNITED ARAB EMIRATES

Toll free number: +971 4 2570007

g) The costs of repair, including spare parts, and any postage costs (if applicable) for the delivery of a defect-free product or product part shall be borne by the Guarantor. The Guarantor shall also bear the postage costs for returning the defective product or product part if the Guarantor or the country specific KitchenAid customer service centre requested the return of the defective product or product part. However, the consumer shall bear the costs of appropriate packaging for the return of the defective product or product part.

h) To be able to make a claim under the Guarantee, the consumer must present the receipt or invoice of the purchase of the product.

2) LIMITATIONS OF THE GUARANTEE

a) The Guarantee applies only to products used for private purposes and not for professional or commercial purposes.

b) The Guarantee does not apply in the case of normal wear and tear, improper or abusive use, failure to follow the instructions for use, use of the product at the wrong electrical voltage, installation and operation in violation of the applicable electrical regulations, and use of force (e.g. blows).

c) The Guarantee does not apply if the product has been modified or converted, e.g. conversions from 120 V products to 220-240 V products.

d) The provision of Guarantee services does not extend the Guarantee period, nor does it initiate the commencement of a new Guarantee period. The Guarantee period for installed spare parts ends with the Guarantee period for the entire product.

e) FOR SOUTH-AFRICA & UAE ONLY:

Further or other claims, in particular claims for damages, are excluded unless liability is mandatory by law.

After expiry of the Guarantee period or for products for which the Guarantee does not apply, the KitchenAid customer service centres are still available to the end-customer for questions and information.

Further information is also available on our website:

- For U.K. & Ireland www.kitchenaid.eu

- For South-Africa: www.kitchenaidafrica.com

- For UAE: www.KitchenAid-MEA.com

PRODUCT REGISTRATION

Register your new KitchenAid appliance now: <http://www.kitchenaid.eu/register>

©2020 All rights reserved.

