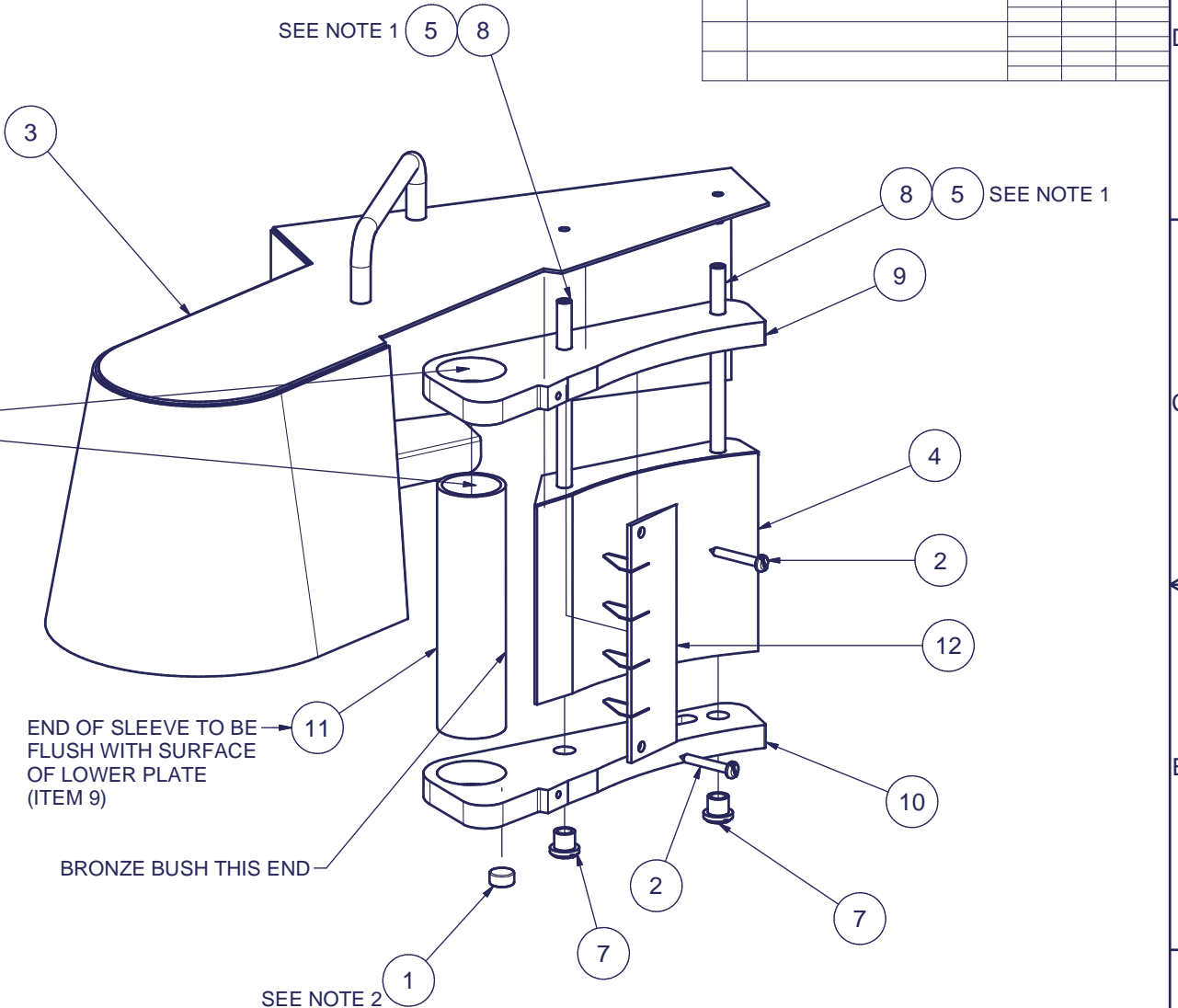
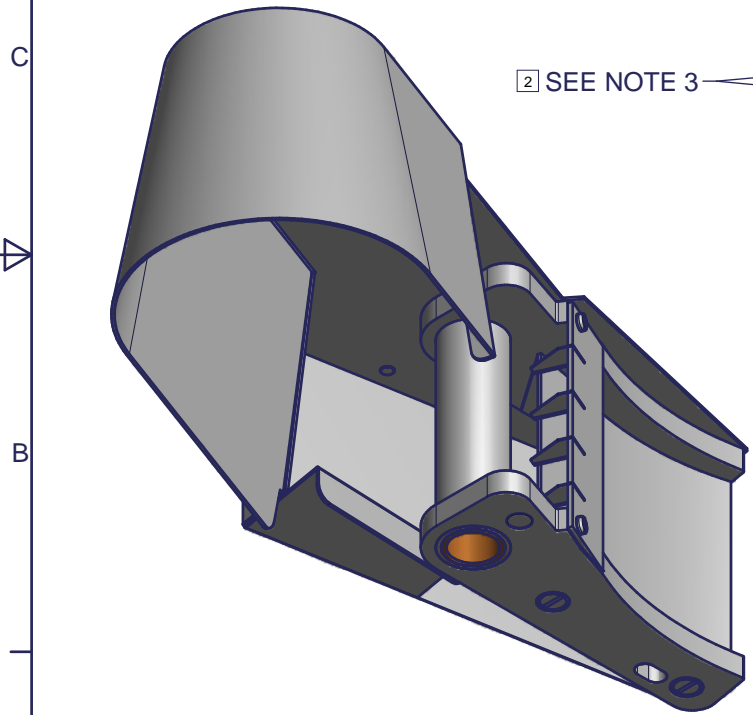


DRAWING NUMBER S61/182		THIRD ANGLE PROJECTION		REMOVE ALL BURRS AND SHARP EDGES			ISS.		DESCRIPTION		DRAWN		CHK'D		APPRO	
							1		PROD ISSUE ECN 7630		RH		CAJ		CAJ	
							2		ECN 8050		18/05/2011		08/06/2011		08/06/2011	
											JPJ		AJB		SJW	
											17/09/2014		26/09/2014		26/09/2014	

PARTS LIST			
ITEM	PART NUMBER	QTY	DESCRIPTION
1	A31/005	1	MAGNET 10 DIA X 5
2	D22/060	2	SCREW NO.6 X 25L SELF TAPPING
3	E61/032	1	KNIFE BLOCK CARRIER
4	E61/168	1	17MM RUN IN BLOCK ASSY
5	K09/029	A/R	LOCTITE 270 STUDLOCK
6	K09/104	1	CYANOACRYLATE ADHESIVE
7	L61/007	2	SLOTTED FIXING NUTS
8	L61/016	2	CLAMPING STUD
9	M61/001 M1	1	UPPER PLATE MACHINED
10	M61/002 M1	1	LOWER PLATE MACHINED
11	S61/180	1	KNIFE BLOCK SLEEVE-PC2-CSC1
12	S61/183	1	21MM KNIFE PACK



NOTES:

1. APPLY A DROP OF LOCTITE 270 (ITEM 5) TO M4 STUDS ON CARRIER (ITEM 3) TO SECURE CLAMPING STUDS (ITEM 7)
2. PRESS MAGNET (ITEM 1) INTO LOCATING HOLE IN LOWER PLATE MOULDING (ITEM 10)
3. APPLY K09/104 (ITEM 6) TO UPPER (ITEM 9) AND LOWER PLATE (ITEM 10) [2]

APPROVED	CAJ
	08/06/2011
CHECKED	CAJ
	08/06/2011
DRAWN	RH
	18/05/2011

TOLERANCES UNLESS OTHERWISE STATED DECIMALS ± 0.25 ANGLES ± 0°30'	TITLE	21mm KNIFE BLOCK ASSEMBLY PC2	
	MATERIAL	SEE PARTS LIST	
DIMENSIONS IN mm	FINISH	CLEAN	
SCALE 0.5	DRAWING NUMBER	S61/182	SHEET 1 OF 1
			A3

imc
Imperial Machine Company Ltd

THE INFORMATION CONTAINED HEREIN MUST NOT BE COPIED NOR DISCLOSED IN WHOLE OR PART TO ANY THIRD PARTY WITHOUT THE WRITTEN PERMISSION OF IMC.