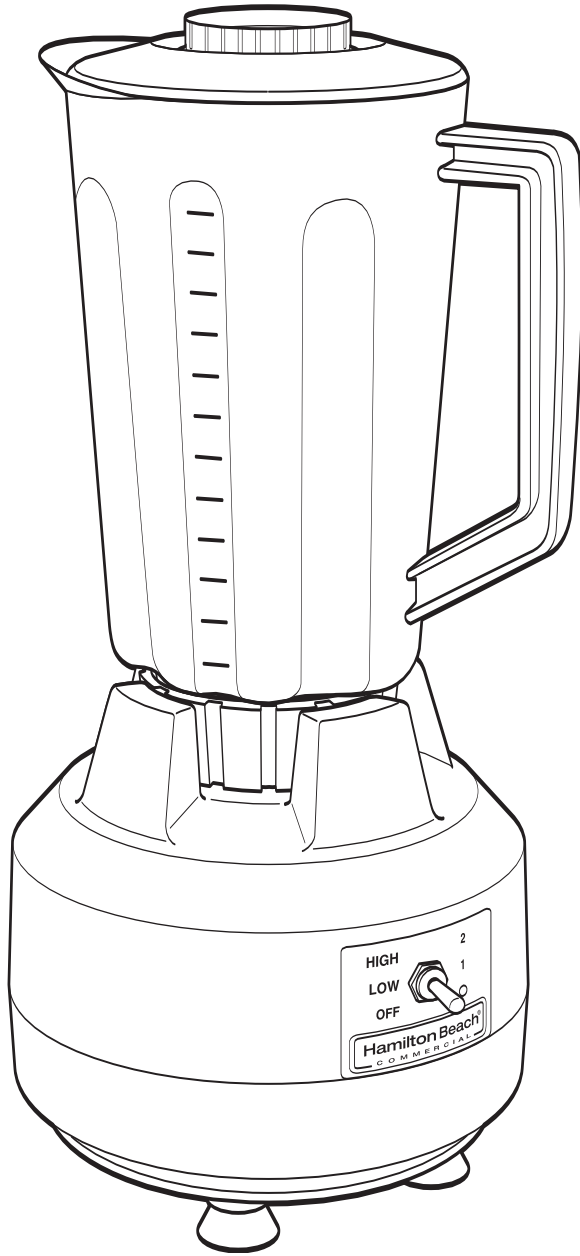


# Hamilton Beach®

COMMERCIAL



## 908™

# Hamilton Beach®

COMMERCIAL

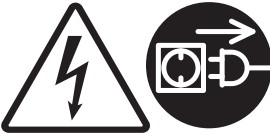
- GB** 908™ Series Bar blender  
Operation Manual (2)
- FR** Mélangeur de bar série 908™  
Manuel d'utilisation (4)
- ES** Mezcladora para bar 908™  
Manual de operación (6)
- PT** Liquidificador Série 908™  
Manual do Utilizador (8)
- IT** Frullatore per bar 908™  
Manuale per il funzionamento (10)
- DE** Standmixer der 908™ Serie  
Bedienungsanleitung (12)
- NL** 908™ Serie Barmixer  
Gebruiksaanwijzing (14)
- DK** 908™ Series Bar-blender  
Betjeningsvejledning (16)
- SE** 908™-serien barblandare  
Bruksanvisning (18)
- NO** Serie 908™ Hurtigmikser  
Brukerhåndbok (20)
- GR** Μπλέντερ για μπαρ Σειρά 908™  
Εγχειρίδιο χειρισμού (22)
- RU** Миксер для бара, серия 908™  
Руководство по эксплуатации (24)
- TU** 908™ Series Bar blender  
Çalıştırma Kılavuzu (26)
- BR** Liquidificador Série 908™  
Manual de Instruções (28)
- CN** 908™ 系列手提搅拌器  
操作手册 (30)
- JP** 908™ バーブレンダー  
操作マニュアル (32)
- KR** 908™ 시리즈 바 블렌더  
사용 설명서 (34)
- SA** الخلاطة التجارية طراز 908  
دليل التشغيل (37)

## IMPORTANT SAFETY INSTRUCTIONS

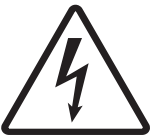
**WARNING** – When using electrical appliances, basic safety precautions should be followed, including the following:

- Read the Operation Manual before using blender. Keep Operation Manual handy.
  - Before first use, wash container assembly in hot, soapy water. Do NOT place in dishwasher.
  - Plug into a grounded outlet.
  - Do not remove ground.
  - Do not use an adapter.
  - Do not use an extension cord.
  - Disconnect power before cleaning or servicing.
  - To reduce risk of personal injury, unplug cord from outlet when not in use, and before putting on or taking off parts.
  - Unplug the blender and inspect the power cord insulation for cracks on a weekly basis. Refer to “Technical Service” for repair or replacement.
  - To protect against electrical shock, do not immerse cord, plug, or blender base in water or any other liquid.
  - Do not spray the base with a high-pressure spray gun.
  - Extreme caution must be used when moving an appliance containing hot oil or other hot liquids.
  - Do not use appliance for other than intended use.
  - Not intended for use by or near children.
  - The use of accessory attachments not recommended by Hamilton Beach may cause injuries.
  - To reduce risk of personal injury and to prevent damage to blender or container and cutter assembly, DO NOT insert utensils into blender container while operating blender.
  - Do not store any kitchen utensils in the container because the blender would be damaged if inadvertently turned on.
  - To prevent possibility of serious personal injury, keep hands out of blender container while operating blender. Always operate blender with container cover in place.
  - Avoid contacting moving parts.
  - Blades are sharp. Handle carefully.
  - If cutter assembly blades are loose, discontinue use immediately and replace cutter assembly. Do not attempt to repair or tighten cutter assembly.
  - Inspect container and cutter assembly daily. Do not use broken, chipped or cracked container. Check cutter for wear, nicks, or broken blades. Do not use broken, loose, or cracked cutting blades. Replace cutter assembly at least every 90 days. Refer to “Technical Service” for repair or replacement.
  - Do not use outdoors.
  - This appliance is intended for short periods of operation, with a rated operating time of 3 minutes.
  - Do not leave blender unattended while it is operating.
  - To prevent damage to blender, container, or cutter assembly, DO NOT move or shake blender while in operation. If blending action stops during operation, turn blender OFF (●), remove container from base, remove container cover, and use a thin rubber spatula to push mixture towards cutters.
  - To prevent burns from hot liquids splashing out of the container, always remove the filler cap of the container cover before blending hot liquids. Keep hands and other exposed skin away from the cover opening to reduce risk of possible injury.
  - Do not operate any appliance with a damaged cord or plug or after the appliance malfunctions, or is dropped or damaged in any manner. Refer to “Technical Service” for instructions on examination, repair, or electrical or mechanical adjustment.
  - Always operate blender with container cover in place.
  - If the supply cord of this appliance is damaged, it must be replaced by the manufacturer or its service agent or a similar qualified person.
- UK ONLY:** If fitted with a non-rewirable U.K. plug, the 13 amp fuse approved by ASTA to be B.S. 1362 must be used. If you need a replacement fuse carrier, it must be replaced with the same colour coded carrier with the same markings. Fuse covers and carriers can be obtained from approved service agents.


– **SAVE THESE INSTRUCTIONS** –




**Electrical Shock Hazard**  
 Disconnect power before cleaning blender base.  
 Failure to follow these instructions can result in death or electrical shock.



**Electrical Shock Hazard**  
 Plug into a grounded outlet.  
 Do not remove ground.  
 Do not use an adapter.  
 Do not use an extension cord.  
 Failure to follow these instructions can result in death, fire, or electrical shock.



**Cut Hazard**  
 Always place cover on container when blending.  
 Do not put hands, spoons, or other utensils in container when blending.  
 Failure to follow these instructions can result in broken bones, cuts, or other injuries.

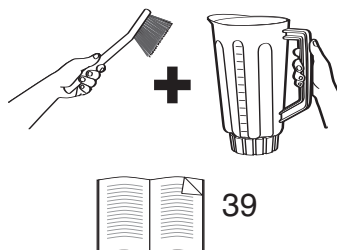
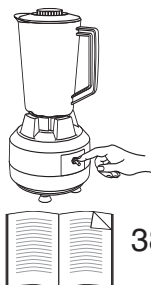


**Burn Hazard**  
 Always use caution when blending hot contents.  
 Failure to follow these instructions can result in burns.

## Sanitizing

Sanitize using 1 tablespoon (15 ml) of household bleach per 1 gallon (3.8 liter) of clean, cool water (60°F/16°C), mixed according to the instructions on the bleach.

1. Fill container with sanitizing solution, replace cover and filler cap and run on LOW (1) speed for 2 minutes. Empty container.
2. Wipe exterior with soft cloth dampened with sanitizing solution.
3. Immerse cover and filler cap in sanitizing solution for 2 minutes.
4. Place empty container on base and run on HIGH (2) speed for 2 seconds to remove any moisture from the cutter assembly.
5. **When ready to use**, rinse with clean water.




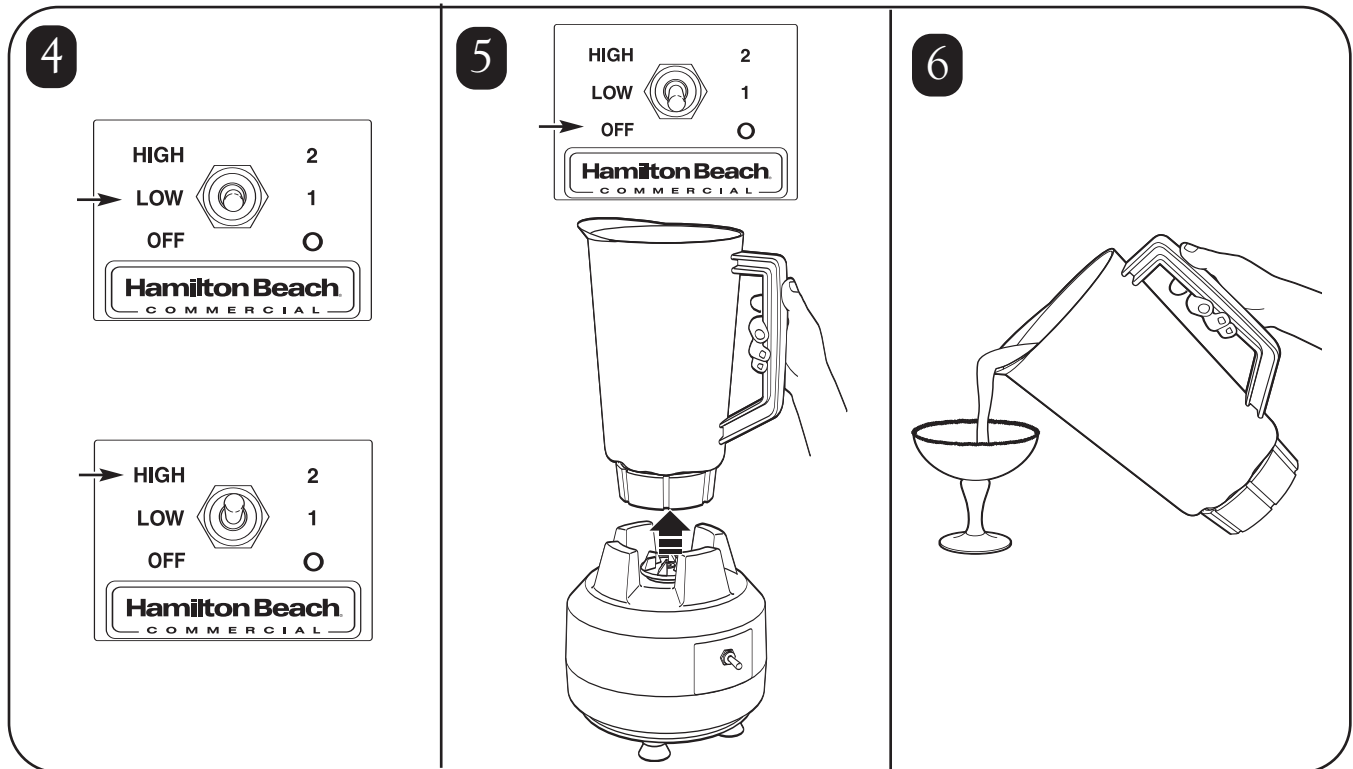
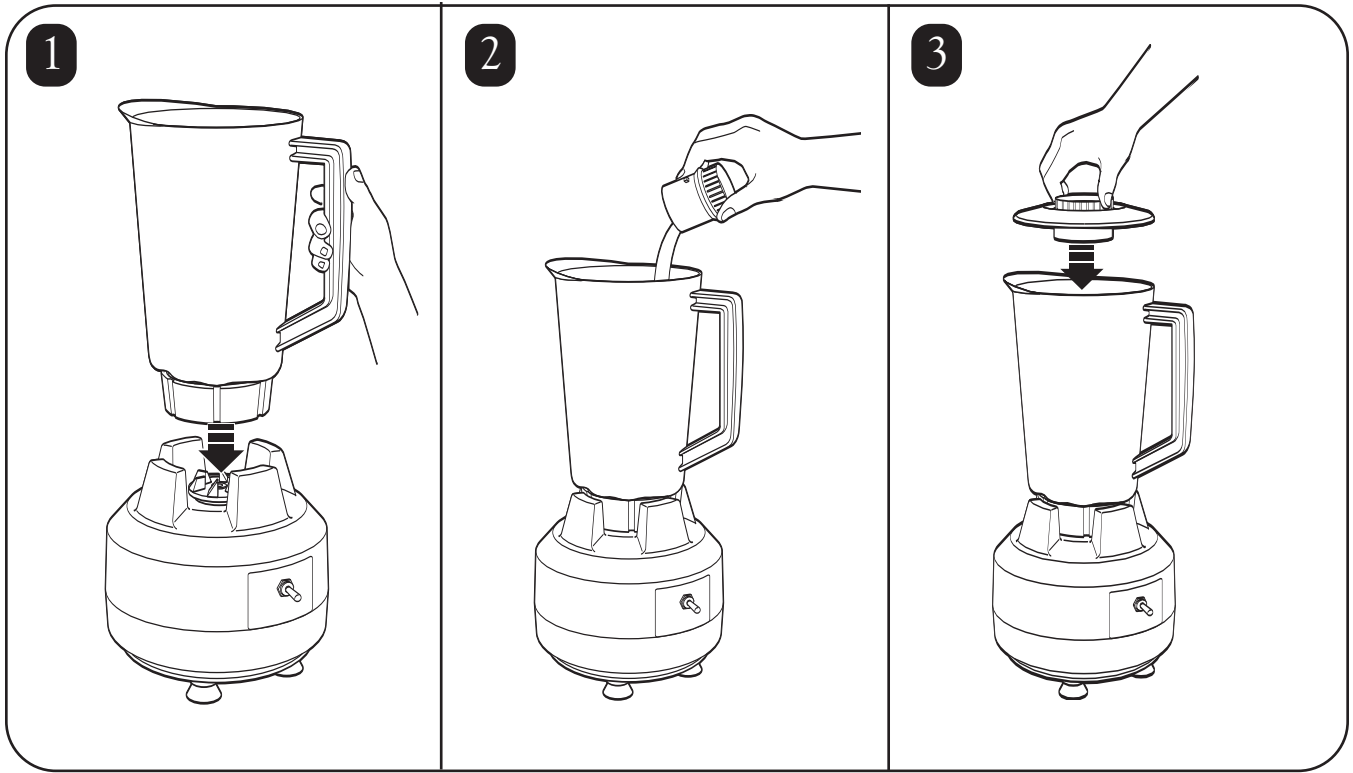
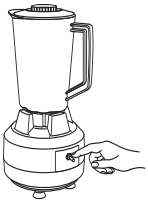
## Technical Service

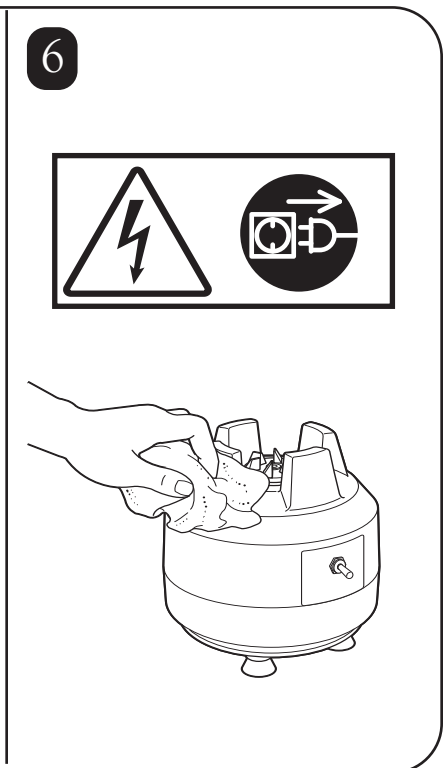
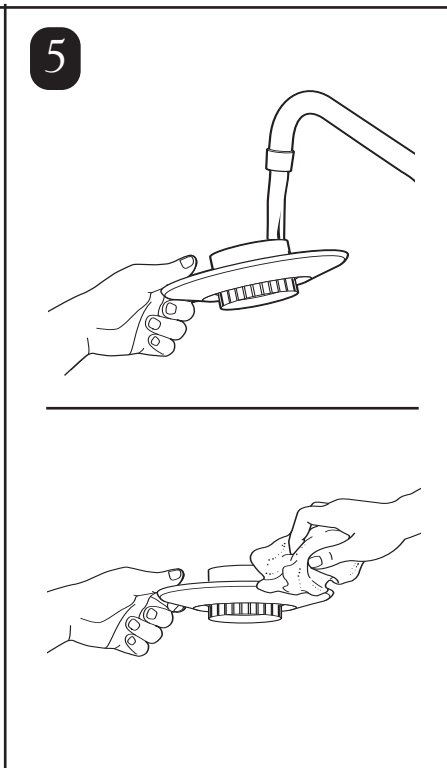
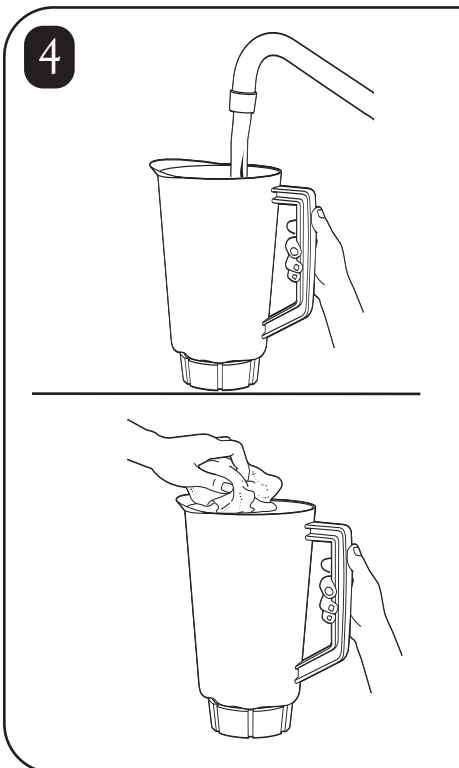
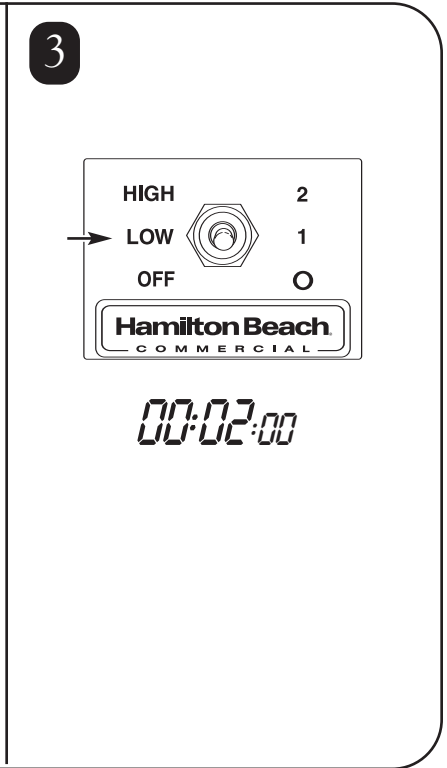
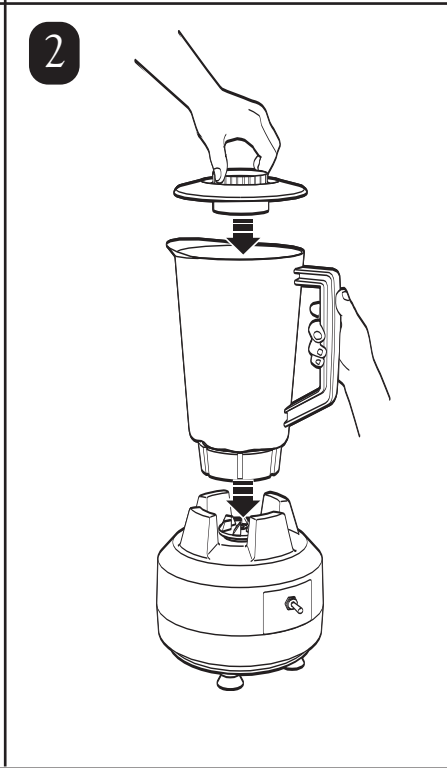
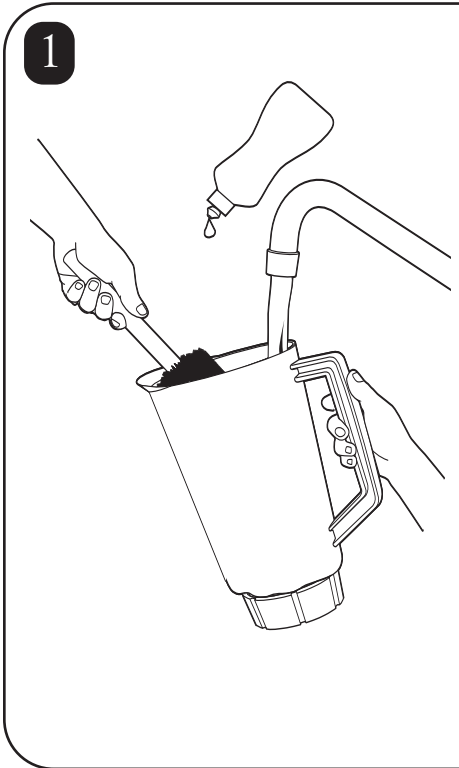
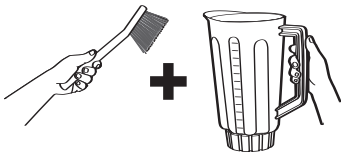
For assistance or replacement parts, call our  
**Technical Service number:**  
 ++910-693-4277  
[www.commercial.hamiltonbeach.com](http://www.commercial.hamiltonbeach.com)

**INSTRUCTIONS FOR PROPER DISPOSAL OF THIS PRODUCT PURSUANT TO THE EUROPEAN UNION'S DIRECTIVE ON ELECTRICAL WASTE**

Please do not dispose of any electrical equipment as ordinary waste. Help conserve natural resources and protect the environment: when you have finished using this product, please dispose of it at your local waste collection or recycling center in the area reserved for electrical equipment. Contact your local authority to find the nearest waste collection center. To remind you to dispose of this product responsibly and separately from ordinary waste, it is marked with the symbol of a crossed-out trash bin.









261 Yadkin Road  
Southern Pines, NC 28387

[www.commercial.hamiltonbeach.com](http://www.commercial.hamiltonbeach.com)

840142200  
9/06