



# Instructions for How to Place your STAYCOLD cabinet

Ensuring that your new **STAYCOLD** cabinet is installed and commissioned correctly is key to making sure that you will get the best performance and reliability from your cabinet over the years to come. Please follow the simple checks and guidelines given below. Failure to do this can invalidate your warranty.

## Step 1

Your cabinet should be sited on a flat, firm surface. Turn the adjustable feet either left or right to adjust their height at each corner to ensure that unit is level and steady



## Step 2

Your cabinet should be plugged directly into a grounded wall socket and **NOT** via an extension cable. Ensure that the cable is fully extracted from the base and is not caught on any items



## Step 3

The front grill of the cabinet must be free of obstruction and well ventilated. As you have purchased a **STAYCOLD** unit, the sides, back and top of the unit do not require ventilation.



## Step 4

Check the drainage pipes are located correctly both at the top of the cabinet, and in the base



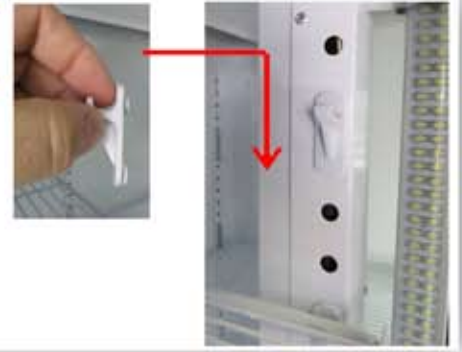
## Step 5

Ensure there is nothing fouling the condenser fan in the base of the cabinet.



## Step 6

Determine the height required for the shelves and then use the shelf hooks provided to arrange the shelves in the fridge (The hook will slot into the holes and then sink into place securely - Take care to ensure that the hooks are at the same level for each shelf to ensure that you don't have a wonky shelf and undue pressure on 1 hook.



## Step 7

When all the shelves have been mounted securely, your unit should now be ready to turn on. Once the unit is turned on you should notice the following:

- \* The Internal and header lights illuminate
- \* The Danfoss controller will display the temperature inside the case
- \* The unit will begin cooling.

Once you see the temperature indicator on the controller moving downwards, it is normally safe to say the fridge is all correct and working and you can begin to load it with stock.

## Step 8

The doors of a unit must be checked to ensure that they are operating correctly - on sliding door models this is especially important as the vibration of the unit during transport may have altered the door wheels.

A quick check that the doors run/open smoothly and ensuring that any bolts are tight on the door mechanism will normally be adequate, but should further assistance be required, please contact your **STAYCOLD** representative for assistance

## Step 9

Should you require any further information or if you have any problems with the above, please refer to the trouble shooting guide and full instruction manual included with the unit, or alternatively contact your **STAYCOLD** representative for assistance.

Staycold International (Pty) Ltd  
PO Box 258, Parys, 9585, FS



Always use Genuine Staycold parts.

Tel: (056) 819 8097  
Fax: (056) 819 8112  
[www.staycold.co.za](http://www.staycold.co.za)