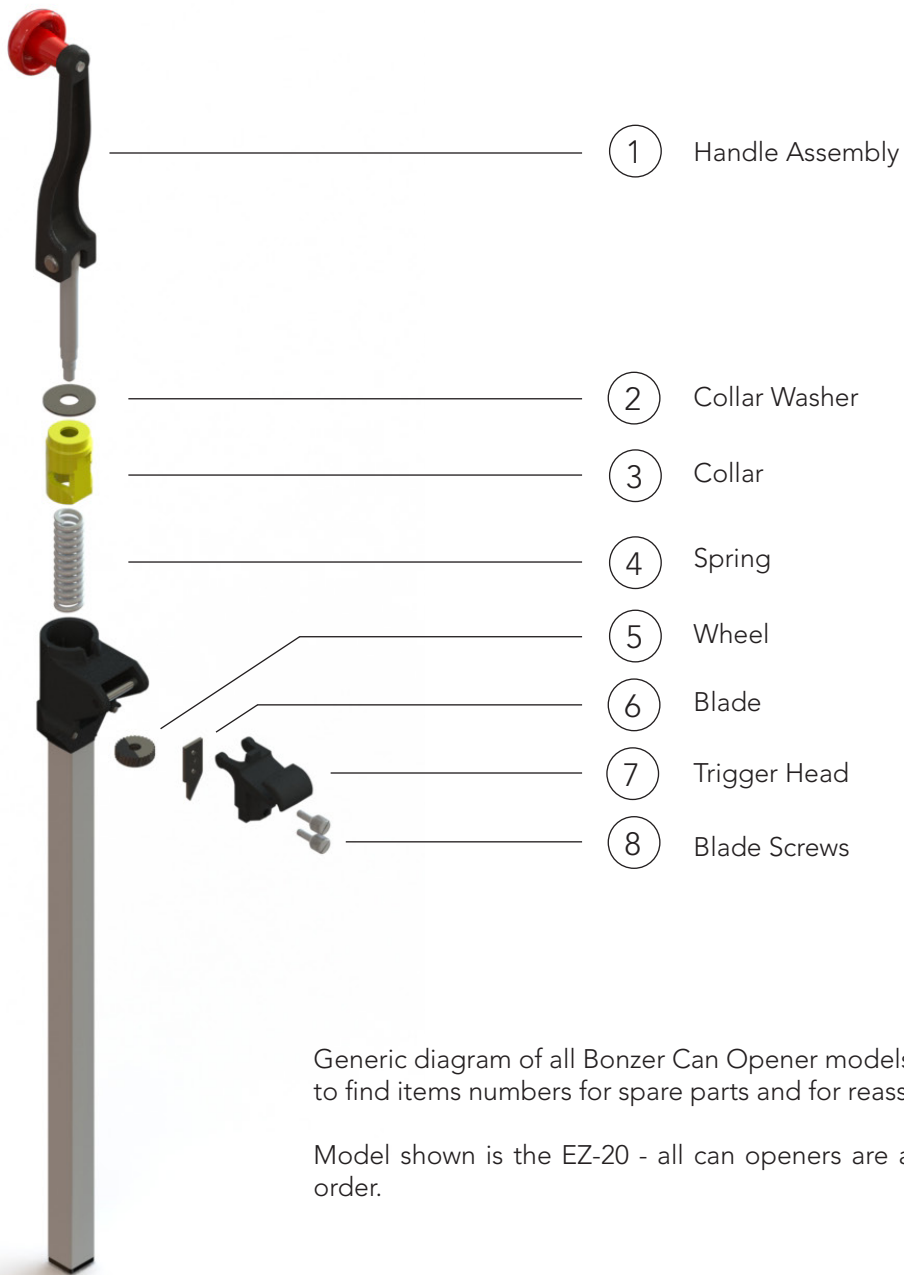


Bonzer Can Opener Assembly



Generic diagram of all Bonzer Can Opener models. Diagram can be used to find items numbers for spare parts and for reassembling can openers.

Model shown is the EZ-20 - all can openers are assembled in the same order.

	Classic R	EZ-20	EZ-40	EZ-60	Titan
1 - Handle Assembly	10267-06	10272-05	10272-05	10272-05	10272-16
2 - Collar Washer	10268-06	10268-05	10268-05	10268-05	10268-05
3 - Collar	10267-04	10268-07	10264-06	10268-01	10268-02
4 - Spring	10267-01	10285-01	10264-07	10285-02	10285-02
5 - Wheel	10070-01	10070-01	10070-02	10070-02	10070-02
6 - Blade	10069-01	10069-02	10069-02	10069-02	10069-02
7 - Trigger Head	10267-11	10286-03	10286-01	10286-04	10286-04
8 - Blade Screws	10281-06	10281-07	10281-07	10281-07	10281-07