

ARCHWAY

HEATED DISPLAY UNIT

**HD1 – HD2 – HD3
HD3-2T
HD5**

INSTALLATION AND USER INSTRUCTIONS

13 Brunswick Industrial Park
Brunswick Way
London
N11 1JL

Tel: +44 (0)20 8365 0760
Fax: +44 (0)20 8365 9670

CONDITIONS OF INSTALLATION: **IMPORTANT**

This manual is part of the product and should be read thoroughly prior to use.

WARNING: THIS APPLIANCE MUST BE EARTHED.

WARNING:

- Units should NOT be mounted directly on a combustible surface.
- All plastic coatings MUST be removed prior to first use.
- Airflow vents must NOT be blocked.
- Any walls, partitions or other kitchen units in close proximity should be non combustible.
- There should be a minimum clearance of 900mm between the top of the unit and any overlying combustible surface.
- All regulations for fire must be complied with.
- Disconnect the mains power supply before removing any panels.

ELECTRICAL SUPPLY:

Electrical ratings are shown on the unit data plate. All appliances with an electrical loading of up to 3kw are supplied with two metres long mains lead type y, and moulded fused 13-amp plug (BS 1363). The wires are coloured with the following codes. In accordance with (BS 7671)

Earth Green/yellow	Neutral Blue	Live Brown
-----------------------	-----------------	---------------

If the supplied plug on the HD1 units is damaged or is removed, a 3-pin replacement plug must be installed in the following procedure:

1. Connect the green and yellow wire to the terminal (in the plug) marked 'E' (EARTH), marked with the earth symbol or coloured green or green & yellow.
2. Connect the blue wire to the terminal marked 'N' (NEUTRAL) or coloured black.
3. Connect the brown wire to the terminal marked 'L' (LIVE) or coloured red.
4. The 3-pin plug must be fitted with a 13 Amp fuse.

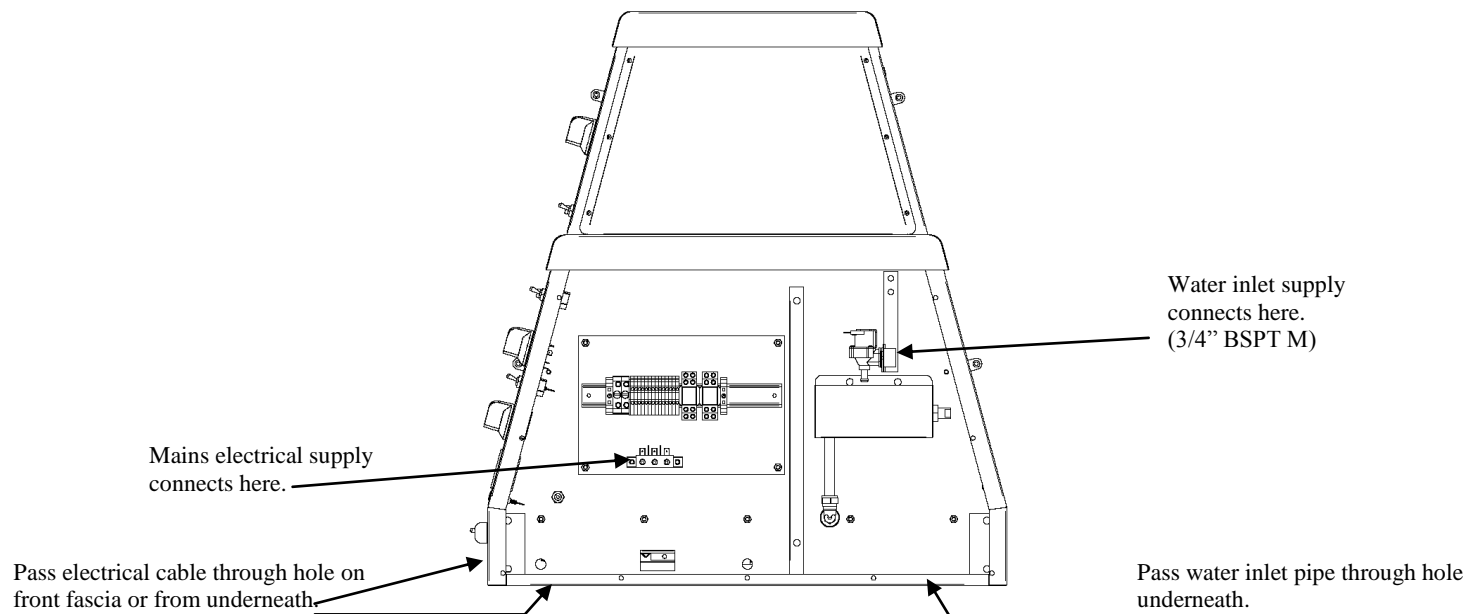
Never use the plug without the fuse cover fitted and never insert a cut off plug into a 13Amp socket.

Alternative plugs must be protected with a fuse of the appropriate rating (see specification). When replacing a fuse always use a BS1362 approved type of the appropriate rating (see specification).

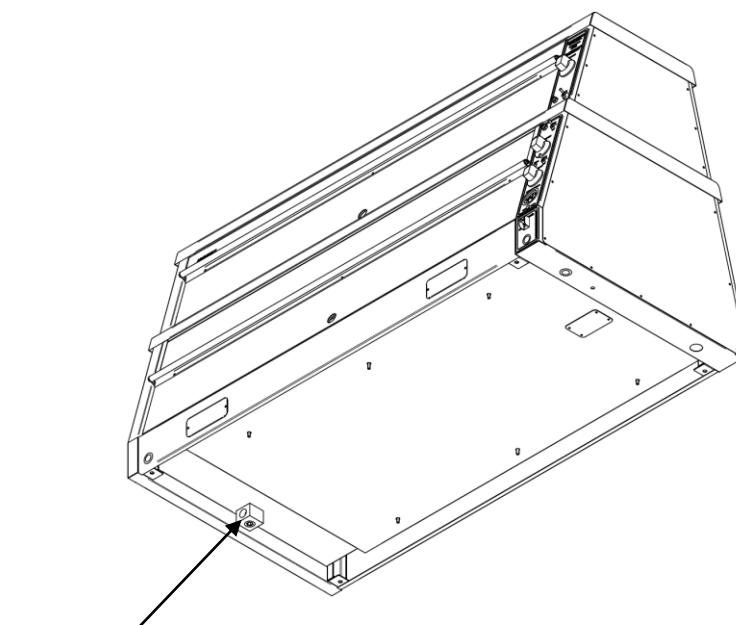
A qualified electrician must install all appliances with an electrical loading of over 3kw. In accordance with Health and Safety at Work Act, BS codes of practice, IEE regulations, building standards, fire precautions act, and local authority and building regulations etc.

INSTALLATION

- Place unit on a suitable, non-combustible, level surface/table.
- Do not connect unit to power supply.
- Remove electrical side cover.



- Connect water supply to Solenoid valve in Unit (3/4" BSPT M).

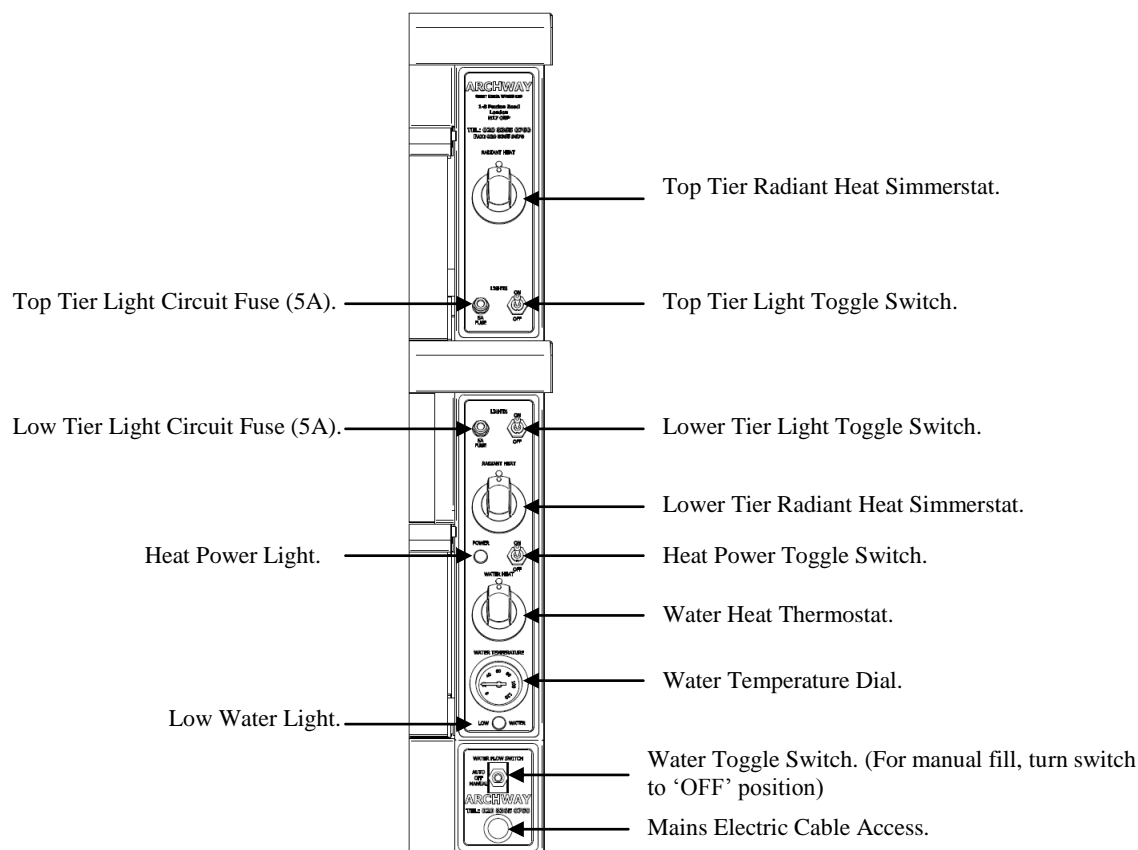


- Connect waste pipe to Drain Block (3/4" BSPT connection).
- Connect electrical supply to Unit (HD2, HD3-2T, HD3 & HD5 Units require hard wiring by a Qualified Electrical Engineer).
- Replace electrical side cover and turn on power and water supply.

USER INSTRUCTIONS

- Turn on main power supply for the Unit.
- Check drain pipe is plugged into drain.
- Turn Power switch On (Red Neon will illuminate).
- Turn light toggle switch(es) on.
- Turn water toggle switch to Automatic to fill water bath (Low Water red neon will cut off once the required water level has been reached). (For manual fill turn switch to 'OFF' position.)
- Place water frame, Pans and Pan Grills into position. Note: Perforated Pans are placed over water bath.
- Turn Water Thermostat control knob to No 6.
- Turn Simmerstat(s) for Radiant Heat control knob to No 6 (adjust to No. 5 when desired temperature has been reached).
- Close all Perspex Doors to allow unit to reach temperature. Note: Keep doors closed during slow periods and for as often as possible.
- Do **NOT** allow the water to dry out. This can cause permanent damage to the unit.

Caution: Appliance can get HOT. Handle with care.



CLEANING INSTRUCTIONS

- Before commencing cleaning process, disconnect unit from electrical supply and allow to cool down.
- Remove all grills, pans and water frames.
- Remove drain pipe to empty water bath.
- Clean unit, grills, pans and water frames with a soap or detergent solution and thoroughly wipe dry after cleaning.
- Do not use a water jet or steam hose, solvents, bleach, caustic cleaners, biological powders or coarse abrasives to clean any part of this unit.
- Ensure water does not touch the electrical components.

SERVICE

REPLACEMENT OF LIGHT BULB

1. Disconnect mains power supply.
2. Remove glass light cover.
3. Unscrew light bulb.
4. Replace with new 25W E14 bulb. Avoid direct contact between bulb and fingers; use a tissue to hold the new bulb while screwing into position.
5. Replace glass light cover.
6. Turn on mains power supply and test.

REPLACEMENT OF WATER HEATER

1. Disconnect mains power supply.
2. Unscrew element cover and side electrical cover.
3. Disconnect element wires from electrical connection.
4. Slide out element from unit.
5. Replace with new matt element and connect wires to electrical connection.
6. Replace covers and test.

REPLACEMENT OF RADIANT HEATER ELEMENT

1. Disconnect mains power supply.
2. Unscrew element cover (located in between row of lights).
3. Disconnect wires from both ends of element.
4. Replace with new element with the same power rating.
5. Replace cover and test.

REPLACEMENT OF INTERNAL FUSE (EXCEPT FOR HD1)

1. Disconnect mains power supply.
2. Remove side electrical cover.
3. Remove faulty fuse from fuse holder (located inside electrical compartment).
Note: See wiring diagram for fuse explanation.
4. Replace with new 10A glass fuse.
5. Replace cover and test.

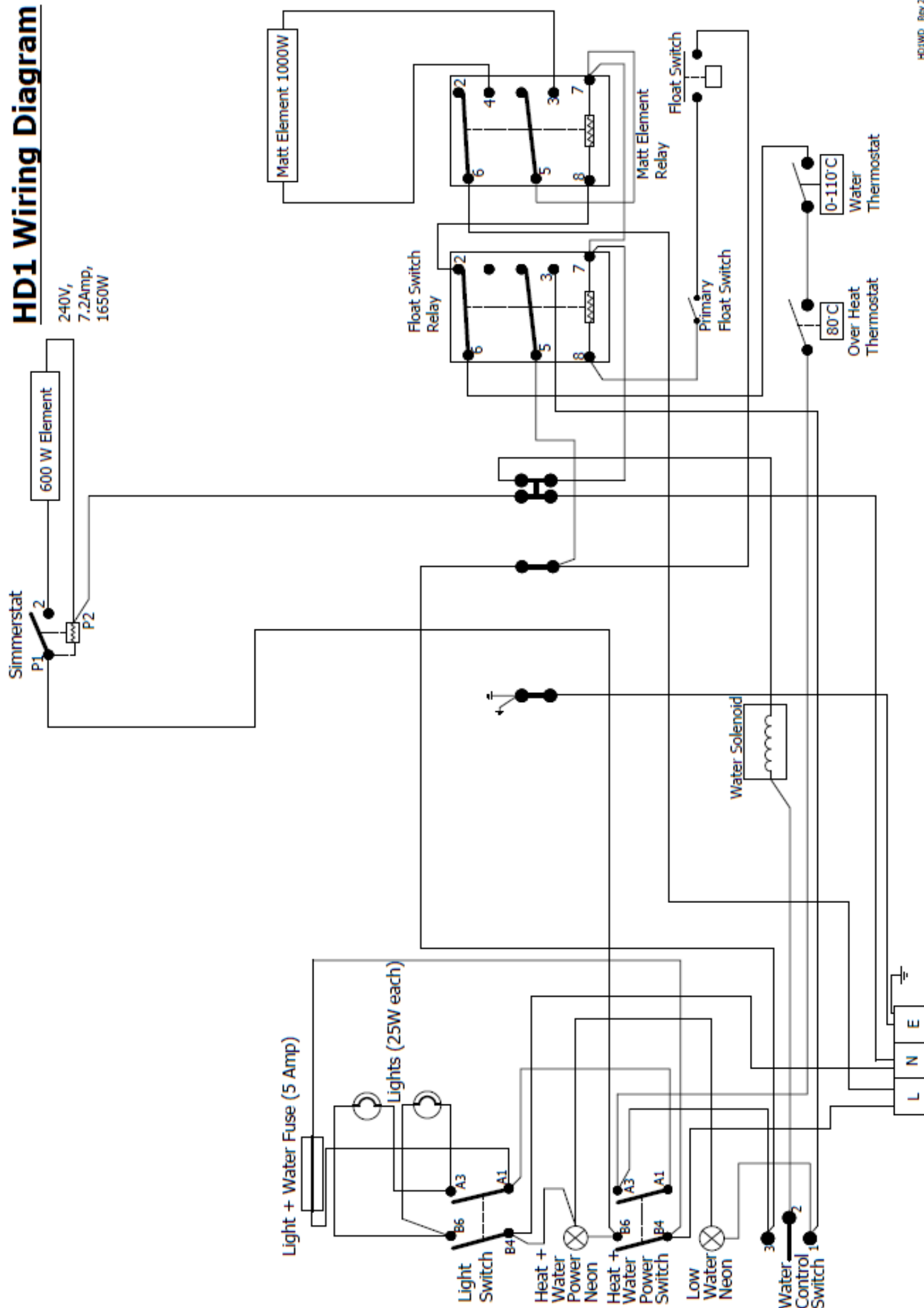
SPECIFICATION

Model	Width	Depth	Height	Weight	Load	Amps	Supply
HD1	606	755	507	40kg	1650W	7.2A	240V
HD2	1064	755	507	64kg	3300W	14.5A	240V
HD3	1520	755	507	85kg	3650W	16A	240V
HD3-2T	1064	755	830	88kg	4000W	17.5A	240V
HD5	1520	755	830	123kg	4200W	18.5A	240V

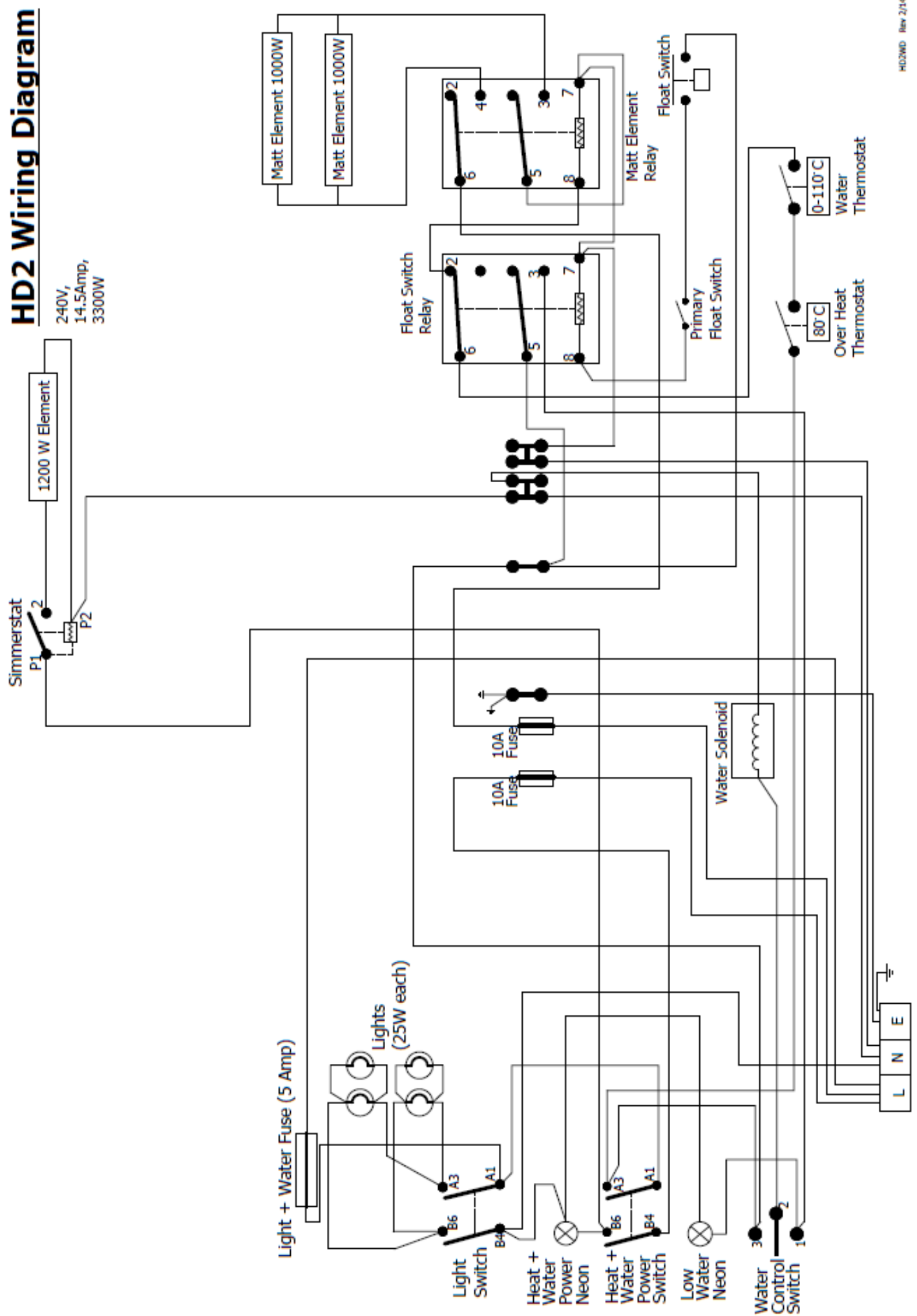
TROUBLESHOOTING

PROBLEM	CAUSE	CORRECTION
Reading does not match actual temperature	<ul style="list-style-type: none"> • Thermometer Probe is not in Aluminium Housing (Part HD028) • Faulty Thermometer 	<ul style="list-style-type: none"> • Insert Probe into housing • Replace Thermometer
Food Product not holding temperature	<ul style="list-style-type: none"> • Doors are kept open • Food held for too long • Water temperature too low • Radiant heat too low • Radiant heat not working • Light bulbs blown out 	<ul style="list-style-type: none"> • Keep doors closed • Do not hold food for too long • Check water elements are working correctly • Turn Simmerstat to higher setting • Check radiant heat elements • Replace any blown bulbs
Doors are Misting	<ul style="list-style-type: none"> • Doors are kept open • Radiant heat too low or not working 	<ul style="list-style-type: none"> • Keep doors closed • Check radiant heat elements
Water will not fill	<ul style="list-style-type: none"> • Faulty Float switch • Faulty water toggle switch • Faulty water Solenoid valve • Faulty Relay • Water supply has been cut off or blocked 	<ul style="list-style-type: none"> • Repair/Replace Float switch • Replace water toggle switch • Replace solenoid valve • Replace Relay • Check the water supply
Lights will not work	<ul style="list-style-type: none"> • Blown Fuse (located on electrical control fascia) • Faulty light toggle switch • Loose or damaged wiring 	<ul style="list-style-type: none"> • Replace blown fuse (5A glass fuse) • Replace toggle switch • Repair/replace wiring
Not all lights work	<ul style="list-style-type: none"> • Faulty Light bulb(s) • Loose or damaged wiring 	<ul style="list-style-type: none"> • Replace light bulb(s) • Repair/replace wiring
Water will not heat	<ul style="list-style-type: none"> • Faulty Relay • Blown Internal Fuse (HD2, HD3-2T, HD3 & HD5) • Faulty Thermostat • Faulty Over heat stat • Faulty Water Matt element • Faulty or Jammed Float switch 	<ul style="list-style-type: none"> • Replace Relay • Replace blown fuse (10A glass fuse) • Replace thermostat • Replace Over heat stat • Replace Matt element • Replace or Unjam Float switch
Water will not reach desired temperature	<ul style="list-style-type: none"> • Low or incorrect voltage • Faulty Water Matt Element • Perforated pans are not over water 	<ul style="list-style-type: none"> • Check wall voltage against data plate • Replace matt element • Place Perforated pans over water
Radiant heat not working	<ul style="list-style-type: none"> • Blown Internal Fuse (HD3-2T, HD3 & HD5) • Faulty Simmerstat • Faulty Toggle switch • Faulty element • Loose or damaged wiring 	<ul style="list-style-type: none"> • Replace blown fuse (10A glass fuse) • Replace Simmerstat • Replace Toggle switch • Replace element • Replace/repair wiring

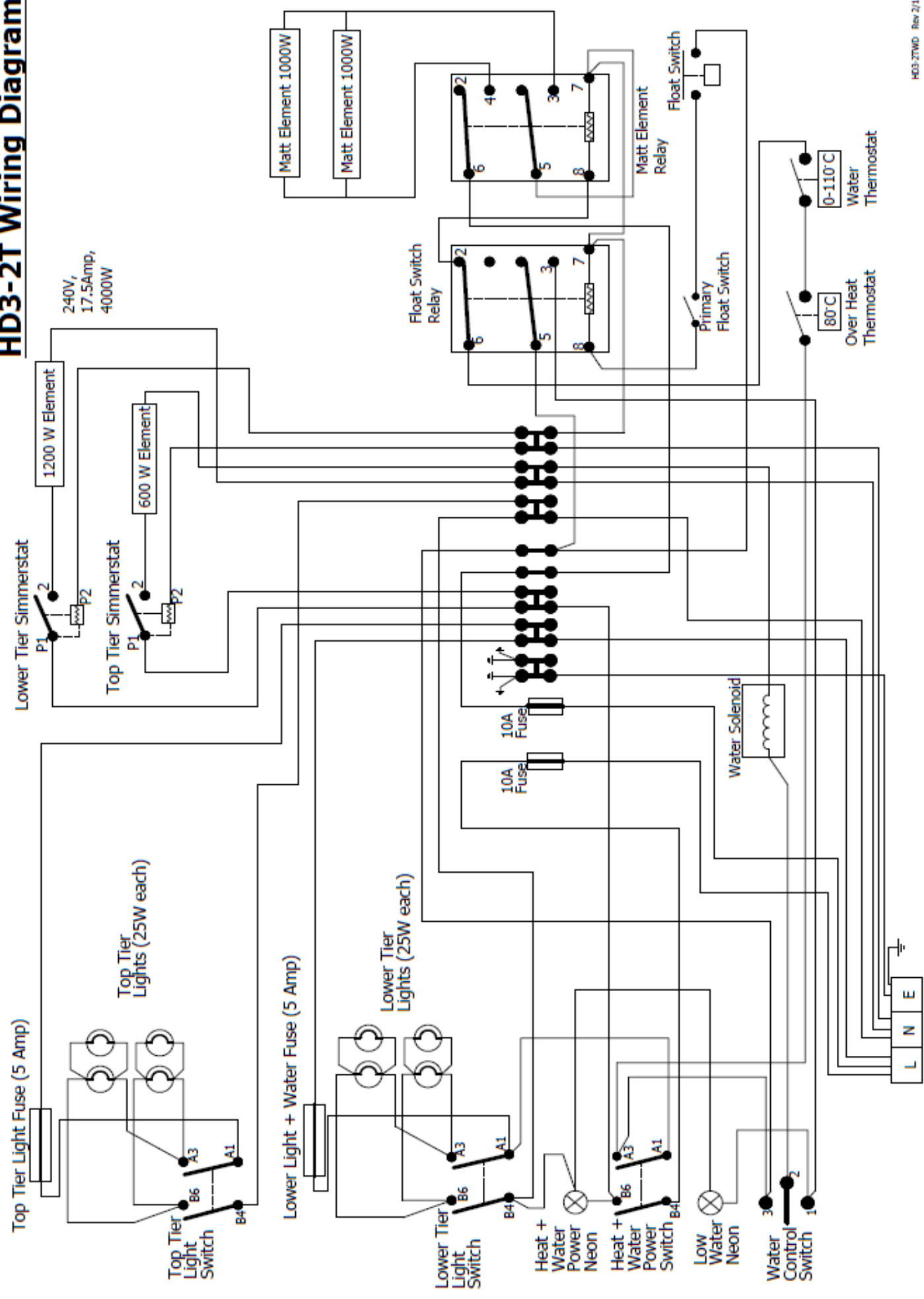
HD1 Wiring Diagram



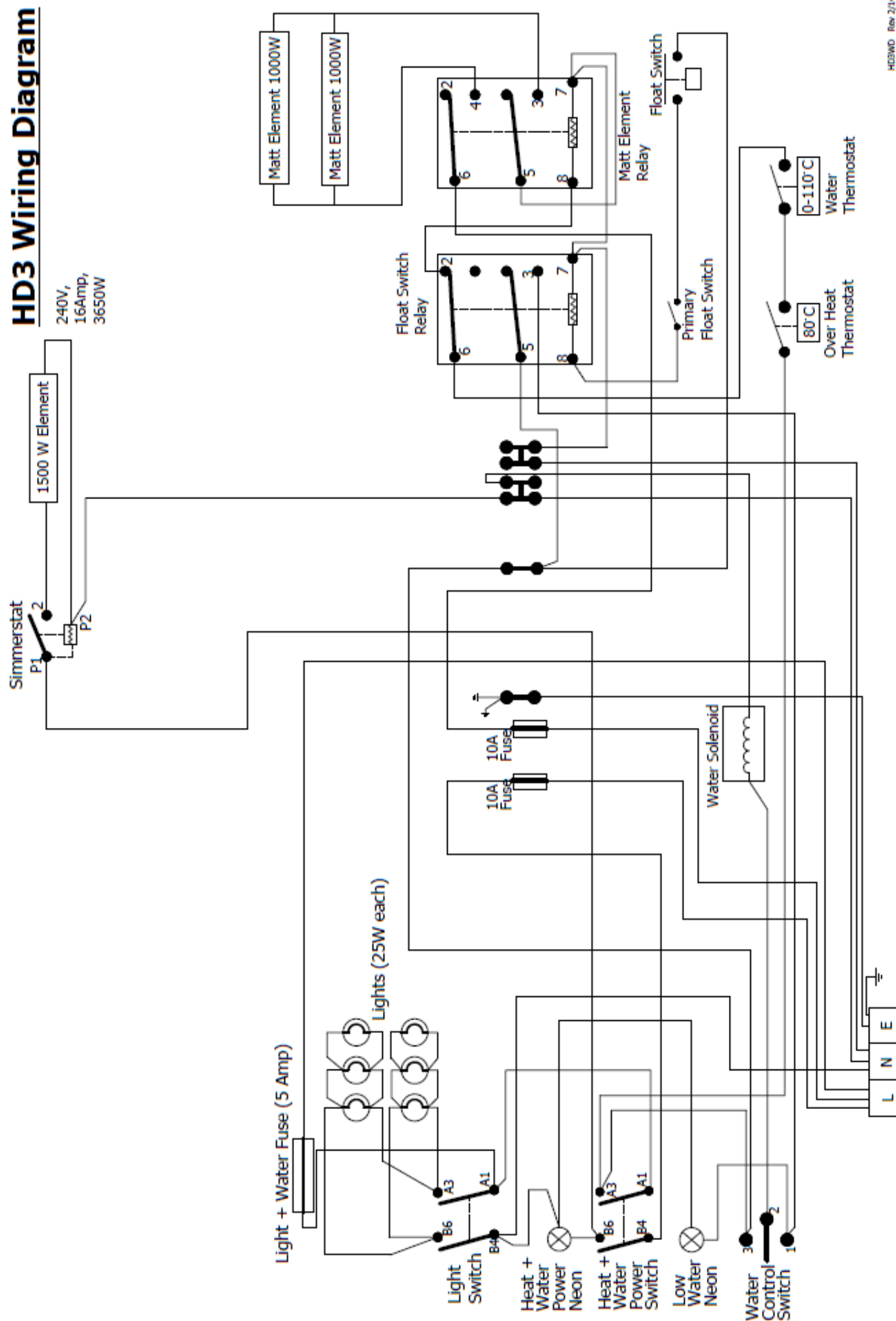
HD2 Wiring Diagram



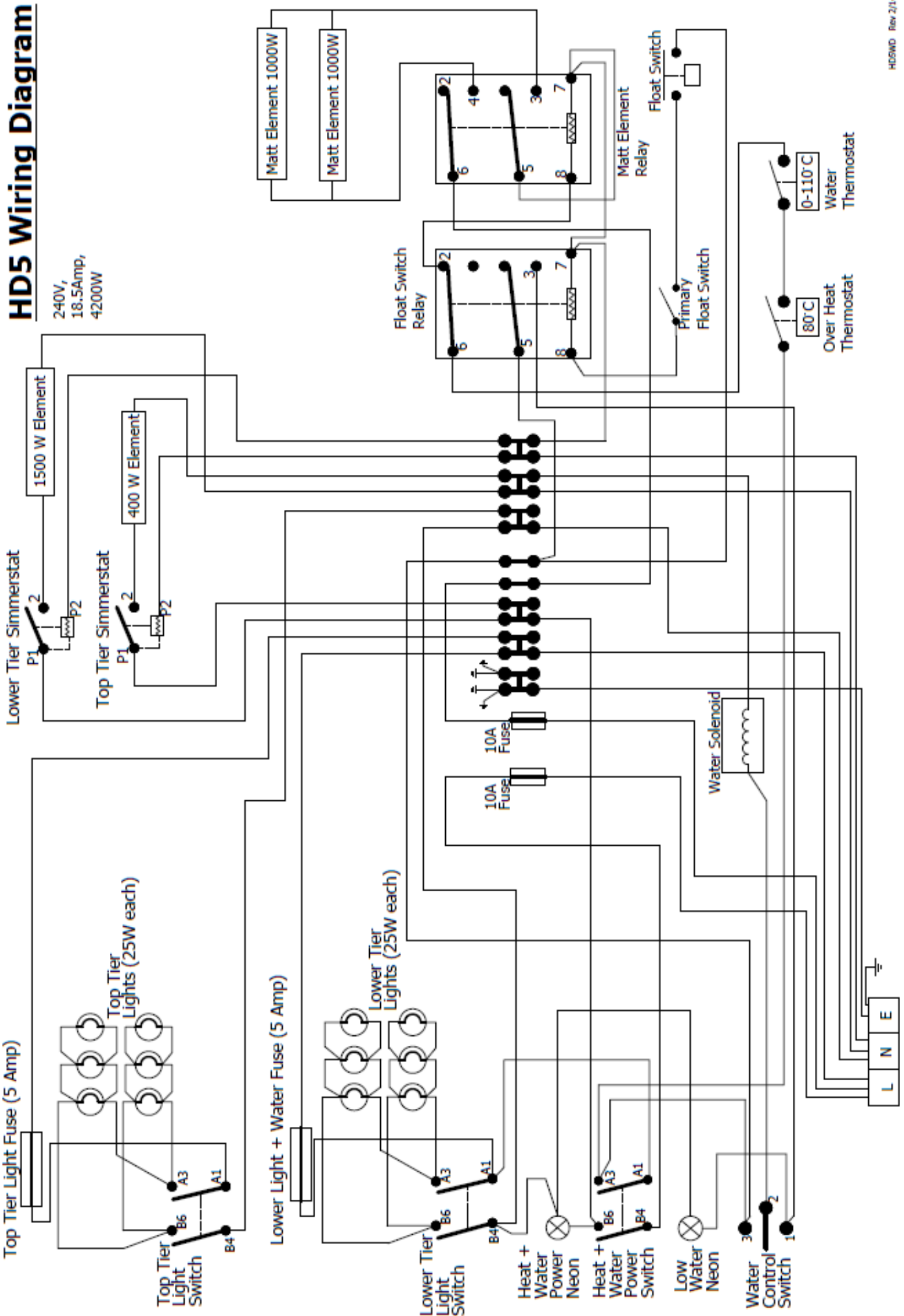
HD3-2T Wiring Diagram

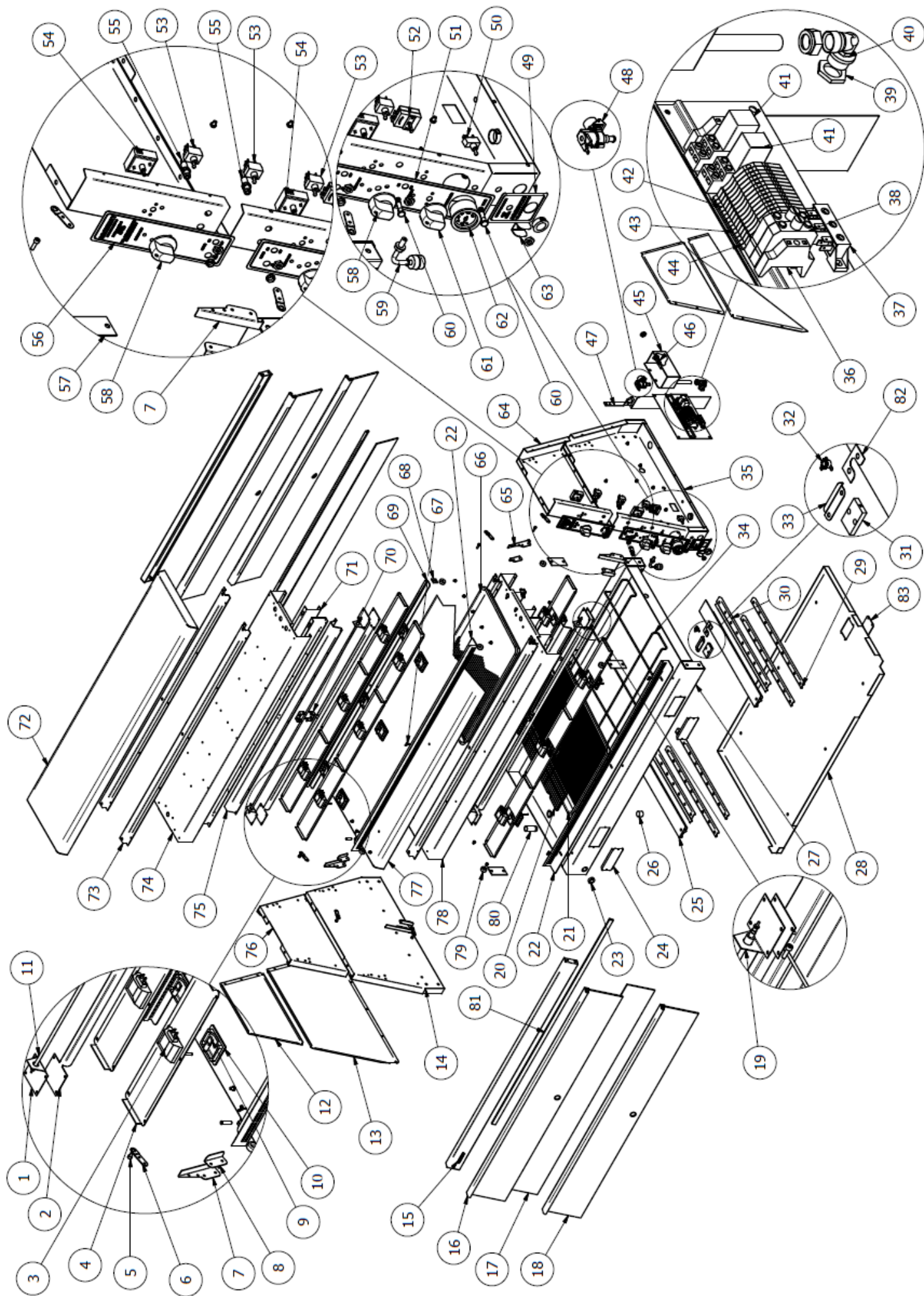


HD3 Wiring Diagram



HD5 Wiring Diagram





PARTS LIST			
ITEM	QTY	PART NUMBER	DESCRIPTION
1	2	HD001	Element Mount Bracket
2	2	HD002	Element Reflector Channel
3	12	HD102E	Light Housing
4	12	HD003	Light Mount Panel
5	8	HD004	Hinge Screw M6 x 20
6	8	HD005	Hinge Bracket
7	2	HD006	Glass Channel Front RHS
8	4	HD007	Glass Channel Back
9	12	HD103E	Light Bulb 25W
10	12	HD98	Light Glass Cover
11	1	HD008 HD0088	HD5 Top Tier Radiant Element 400W (1330mm) HD3-2T Top Tier Radiant Element 600W (880mm)
12	2	HD009	Top Tier Side Cover
13	2	HD010	Side Cover
14	1	HD011	LHS Panel
15	2	HD012	Front Channel
16	4	HD013 HD110 HD150	HD3/HD5 Door Hinge (1387mm) HD3-2T/HD2 Door Hinge (930mm) HD1 Door Hinge (475mm)
17	2	HD014 HD090 HD130	HD3/HD5 Glass Panel (1385 x 150) HD3-2T/HD2 Glass Panel (928 x 150) HD1 Glass Panel (471 x 150)
18	4	HD015 HD100 HD140	HD3/HD5 Perspex Door (1385x 200) HD3-2T/HD2 Perspex Door (930x 200) HD1 Perspex Door (475 x 200)
19	1	HD016 HD115 HD160	HD3/HD5 Radiant Element 1500W (1330mm) HD3-2T/HD2 Radiant Element 1200W (880mm) HD1 Radiant Element 600W U Shape
20	5	HD017	Pan Grill
21	3	HD018	Pan Perforated
22	2	HD019	Pan Angle High
23	3	HD020	Blanking Plug 28mm
24	2	HD021	Element Access Cover
25	2	HD022	Matt Element 1kW
26	1	HD023	Drain Plug 3/4" BSPT
27	1	HD024	Base
28	1	HD025	Base Cover
29	4	HD026	Matt Element Channel
30	4	HD027	Matt Element Mount Channel
31	1	HD028	Temperature Probe Housing
32	1	HD029	Overheat Stat
33	1	HD030	Thermostat Mount Bracket
34	2	HD031	Water Frame
35	1	HD032	RHS Panel
36	1	HD033	Din Rail End Stop
37	1	HD034	Terminal Block For Mains 40A
38	2	HD035	Electric Fused Termnial
39	1	LOCKNUT 1/2"	Locknut 1/2"
40	1	HD17708	Water Tube Adaptor 15x1/2"
41	2	HD037	Relay
42	6	HD038	Electrical Feed Through Terminal Blue
43	6	HD039	Electrical Feed Through Terminal Brown
44	2	HD040	Electrical Earth Terminal
45	1	HD041	Water Tank
46	1	HD042	Float Switch
47	1	HD043	Solenoid Valve Bracket
48	1	HD045	Solenoid Valve
49	1	HD048	Front Badge Bottom
50	1	HD049	Water Toggle Switch
51	1	HD050	Front Badge
52	1	BMT010	Thermostat
53	3	HD051	Light Toggle Switch / Element Power Toggle Switch
54	2	CS150	Simmerstat
55	2	HD052	Fuse Holder
56	1	HD053	Top Tier Front Badge
57	4	HD054	Feet Bracket Plate
58	2	CS140	Control Knob For Simmerstat
59	1	HD055	Water Level Float
60	2	BM004	Neon Light Red
61	1	BM003	Control Knob For Thermostat
62	1	HD056	Temperature Dial
63	1	HD057	Water Toggle Switch Bracket
64	1	HD058	Top Tier RHS Panel
65	2	HD059	Glass Channel Front LHS
66	2	HD060	HD Pan
67	7	HD061	Pan Angle Wing Screw M4 x 16
68	2	HD062	Pan Angle Bracket
69	1	HD063	Top Tier Pan Angle Low Side
70	4	HD064	Element Bracket
71	6	HD065	Light Panel Middle Channel
72	1	HD066	Top Tier Cover
73	4	HD067	Top Cover Channel
74	1	HD068	Top Tier Light Housing
75	2	HD069	Element Mount Panel
76	1	HD070	Top Tier LHS Panel
77	1	HD071	Middle Cover
78	1	HD072	Light Housing
79	8	SL028	Door Stop
80	1	HD073	Drain Pipe
81	2	HD074 HD120 HD180	HD3/HD5 Glass Seal Strip (1355mm) HD3-2T/HD2 Glass Seal Strip (900mm) HD1 Glass Seal Strip (445mm)
82	1	HD075	Overheat Stat Mount Plate
83	1	HD188	Overheat Stat Cover
	1	HD4676	Mains Cable Gland M25 For HD1 (not shown)
	1	13ACABLE	Mains Cable and Plug For HD1 (not shown)