

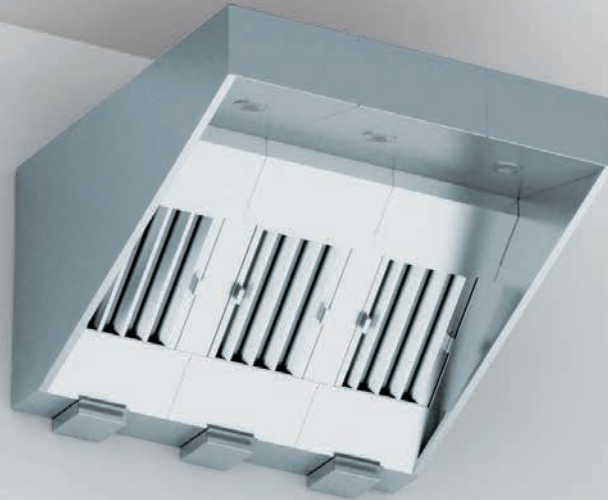
smart
vent[®]

Canopy Extraction Ventilation Systems

SmartVent canopy extraction systems provide an affordable, modular ventilation system for gas and electric cooking equipment in commercial kitchens. Designed in partnership with kitchen ventilation experts Britannia, SmartVent is flexible, effective and easy to install. This makes it perfect for fast food outlets and cafés as well as smaller pubs and restaurants.

Designed in partnership with

Britannia
kitchen ventilation



Simple to remove stainless steel baffle filters for easy cleaning and maintenance



Energy efficient LED lighting comes as standard on each canopy.

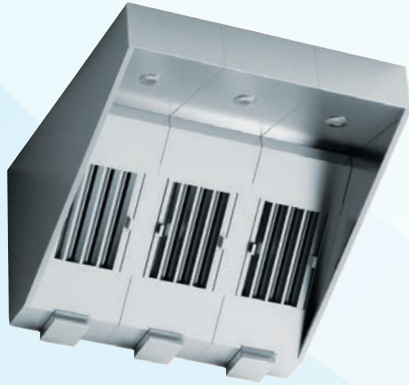
SmartVent

SmartVent canopy extraction systems offer caterers a real alternative to expensive, bespoke kitchen ventilation. Modular in design and robustly constructed, they can be produced quickly to meet challenging installation deadlines and are suitable for use with both gas and electric cooking equipment.

Each canopy is 1200mm deep, with four length options: 1200mm, 1600mm, 2000mm and 2400mm. Canopies can be ordered either singly or in multiples to suit individual requirements.

- Creates a comfortable working environment by extracting kitchen smoke and odour
- Equipped with a variable speed fan incorporating a powerful direct drive motor for reliable performance
- Fan can be positioned to vent either vertically or horizontally to suit your project requirements
- Operates quietly – just 62 decibels – less noisy than a mobile phone
- LED lighting provided as standard – bright and energy efficient
- Simple to install and easy to operate
- Suitable for use with any cooking equipment up to and including 900 series
- Unlike standard ventilation hoods, SmartVent canopies have been designed to work in closer proximity to the cooking equipment, maximising ventilation efficiency

Canopy Extraction Ventilation Systems



SmartVent 1200mm – SV1212

Suitable for use with a cooking suite up to a maximum 1200mm wide.



SmartVent 1600mm – SV1216

Suitable for use with a cooking suite up to a maximum 1600mm wide.



SmartVent 2000mm – SV1220

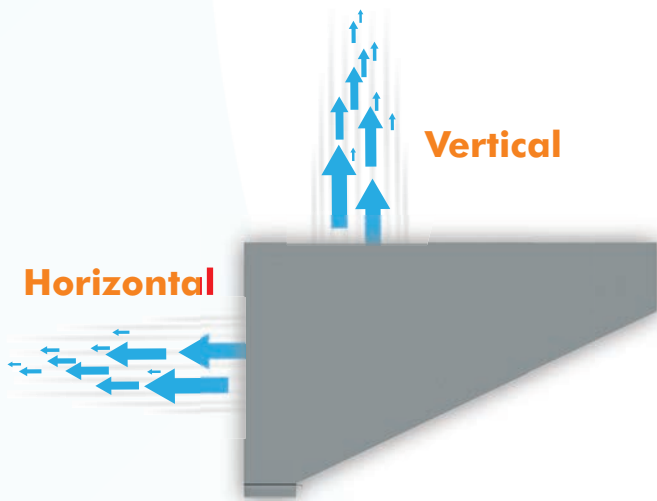
Suitable for use with a cooking suite up to a maximum 2000mm wide.



SmartVent 2400mm – SV1224

Suitable for use with a cooking suite up to a maximum 2400mm wide.

For suites larger than 2400mm, multiple canopies can be specified.



Airflow Options



Fan location options

Model	Dimensions L x W x H (mm)	Fan Position				
		Left (L)	Central (C)	Right (R)	Vertical	Horizontal
SV1212LH	1200 x 1200 x 700	●				●
SV1212LV	1200 x 1200 x 700	●			●	
SV1212CH	1200 x 1200 x 700		●			●
SV1212CV	1200 x 1200 x 700		●		●	
SV1212RH	1200 x 1200 x 700			●		●
SV1212RV	1200 x 1200 x 700			●	●	
SV1216LH	1600 x 1200 x 700	●				●
SV1216LV	1600 x 1200 x 700	●			●	
SV1216CH	1600 x 1200 x 700		●			●
SV1216CV	1600 x 1200 x 700		●		●	
SV1216RH	1600 x 1200 x 700			●		●
SV1216RV	1600 x 1200 x 700			●	●	
SV1220LH	2000 x 1200 x 700	●				●
SV1220LV	2000 x 1200 x 700	●			●	
SV1220CH	2000 x 1200 x 700		●			●
SV1220CV	2000 x 1200 x 700		●		●	
SV1220RH	2000 x 1200 x 700			●		●
SV1220RV	2000 x 1200 x 700			●	●	
SV1224LH	2400 x 1200 x 700	●				●
SV1224LV	2400 x 1200 x 700	●			●	
SV1224CH	2400 x 1200 x 700		●			●
SV1224CV	2400 x 1200 x 700		●		●	
SV1224RH	2400 x 1200 x 700			●		●
SV1224RV	2400 x 1200 x 700			●	●	



Specifications

Model ⁺	Dimensions L x W x H (mm)	Weight (Approx kg)	Electrical Supply	Motor Rating (kW)	Starting Current (Amps) - Fan Motor	Current (Amps) - LED Lighting	Extract Volume
SV1212	1200 x 1200 x 700	64	230V / 1Ph / 50Hz	0.12	5	1	up to 0.34m ³ /s extract volume*
SV1216	1600 x 1200 x 700	77	230V / 1Ph / 50Hz	0.12	5	1	up to 0.45m ³ /s extract volume*
SV1220	2000 x 1200 x 700	91	230V / 1Ph / 50Hz	0.12	5	1	up to 0.58m ³ /s extract volume*
SV1224	2400 x 1200 x 700	105	230V / 1Ph / 50Hz	0.12	5	1	up to 0.64m ³ /s extract volume*

* (Subject to addition of downstream ductwork & fittings by others)

⁺ (See page three for full product codes to indicate fan position)

Spares

Code	Description
FI40	Stainless steel baffle filter
LA340	Downlighter
FA126	Centrifugal fan

Points to note:

Please note that the fan speed controller and the ductwork necessary to connect SmartVent to the outside will not be provided by Lincat but by your installer.

When venting gas cooking equipment, a gas interlock will be required. This is not supplied by Lincat but we can offer advice on where to purchase.





Canopy Extraction Ventilation Systems

Designed in partnership with

Britannia
kitchen ventilation



QUALITY GUARANTEED
You can choose Lincat products with confidence. All products in this leaflet are backed by the reassurance of a comprehensive UK two-year parts and labour warranty.



A member company of  **THE MIDDLEBY CORPORATION**

**Lincat Limited, Whisby Road,
Lincoln LN6 3QZ,
United Kingdom**

UK Sales Tel: 01522 875500 UK Spares Tel: 01522 875510 UK General Tel: 01522 875555
UK Fax: 01522 875530 International Sales Tel: +44 1522 503250 International Fax: +44 1522 875530
Website: www.lincat.co.uk UK Sales e-mail: sales@lincat.co.uk International Sales e-mail: export@lincat.co.uk