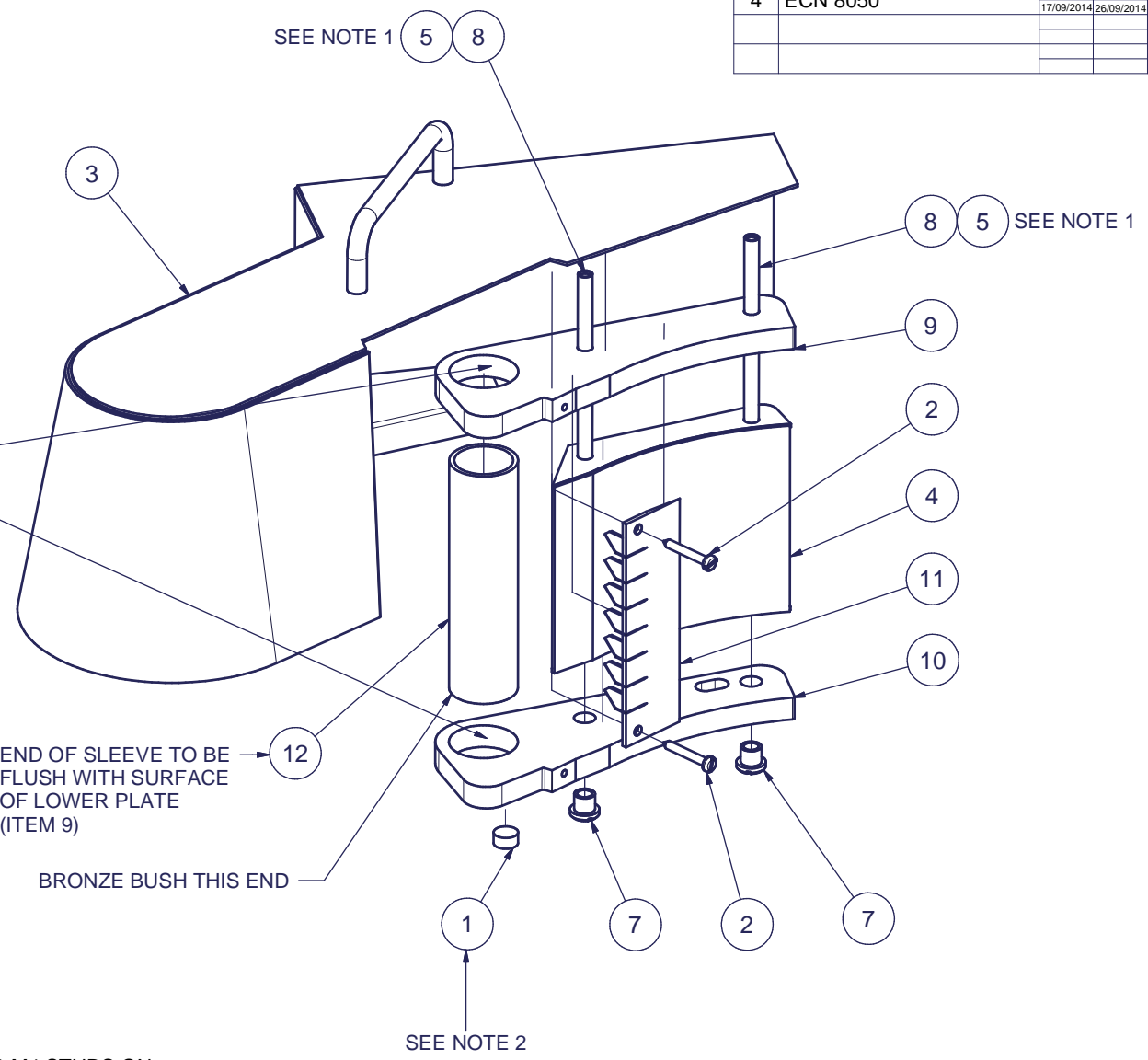
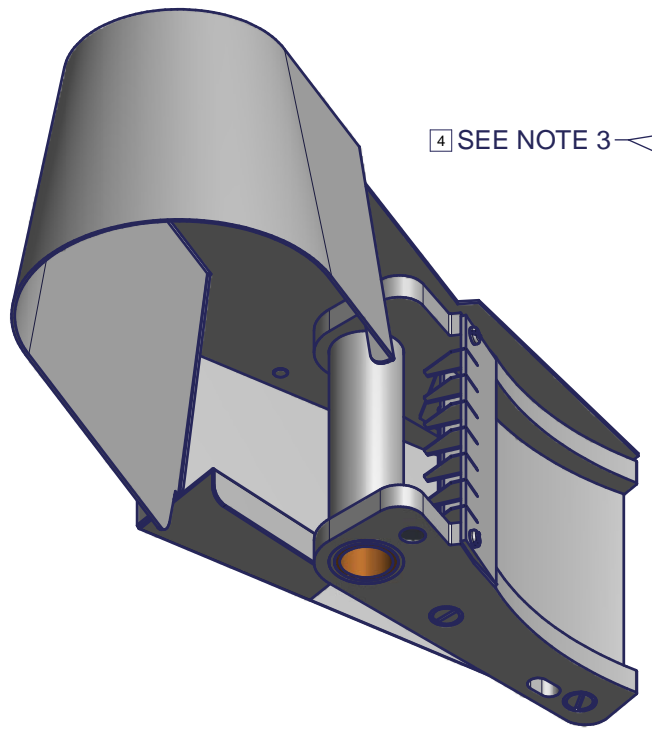


REMOVE ALL BURRS AND SHARP EDGES

ISS.	DESCRIPTION	DRAWN	CHK'D	APPRO
		DATE	DATE	DATE
2	REDRAWN ECN 7451	RH	RH	SJW
3	ECN 7507	RH	RH	CJ
4	ECN 8050	JPJ	AJB	SJW

PARTS LIST			
ITEM	PART NUMBER	QTY	DESCRIPTION
1	A31/005	1	MAGNET 10 X 5L
2	D22/060	2	NO 6 X 1IN SELF TAPPING SCREW
3	E61/032	1	KNIFE BLOCK CARRIER
4	E61/039	1	12MM RUN IN BLOCK ASSY
5	K09/029	A/R	LOCTITE 270 STUDLOCK
6	K09/104	1	CYANOACRYLITE ADHESIVE
7	L61/007	2	SLOTTED FIXING NUTS
8	L61/016	2	CLAMPING STUD
9	M61/001 M1	1	UPPER PLATE MACHINED
10	M61/002 M1	1	LOWER PLATE MACHINED
11	S61/134	1	12MM KNIFE PACK
12	S61/180	1	KNIFE BLOCK SLEEVE-PC2-CSC1




NOTES:

1. APPLY A DROP OF LOCTITE 270 (ITEM 5) TO M4 STUDS ON CARRIER (ITEM 3) TO SECURE CLAMPING STUDS (ITEM 8)
2. PRESS MAGNET (ITEM 1) INTO LOCATING HOLE IN LOWER PLATE MOULDING (ITEM 10)
3. APPLY K09/104 (ITEM 6) TO UPPER (ITEM 9) AND LOWER PLATE (ITEM 10)

APPROVED	SJW
21/10/2009	
CHECKED	RH
20/10/2009	
DRAWN	RH
20/10/2009	

TOLERANCES UNLESS OTHERWISE STATED DECIMALS ± 0.25 ANGLES ± 0°30'	TITLE 12mm KNIFE BLOCK ASSEMBLY-PC2
	MATERIAL SEE PARTS LIST
DIMENSIONS IN mm	
SCALE 0.5	FINISH CLEAN

 Imperial Machine Company Ltd	THE INFORMATION CONTAINED HEREIN MUST NOT BE COPIED NOR DISCLOSED IN WHOLE OR PART TO ANY THIRD PARTY WITHOUT THE WRITTEN PERMISSION OF IMC.	
	DRAWING NUMBER S61/135	SHEET 1 OF 1 A3