

# Bauknecht AWH912-PRO-BAUK

## 6th Sense Washer

ENERGY  
**B**



### Product Highlights

**Power supply:** 13 amp plug

**Washer capacity:** 9kg

**Dimensions:** W600 x D640 x H850mm

**Maximum spin speed:** 1200 RPM

**Programmes:** 24 (including Steam Hygiene, Anti Stain, Steam Refresh, Anti Allergy, Rapid, Wool, and Duvet)

**Energy usage at full load:** 0.567 kWh per cycle\*

**Water usage at full load:** 46 Litres per cycle\*

**Water supply:** Cold water connection only

**Stacking kit:** C00378975 (sold separately)

**Tested operating hours:** 5,000 hours  
(Compliant with Machinery Directive 2006/42/EN)

**Warranty:** 1 Year Parts and Labour



**6th Sense Technology:** 6th Sense Technology utilises sensors, a flow meter, and a pressure switch to accurately determine the load weight and adjust energy usage accordingly. This premium wash ensures exceptional cleaning performance while achieving significant savings - up to 45% on energy for every wash. It's a smart choice for efficiency and effectiveness, delivering outstanding results while reducing operational costs.



**ZEN Technology:** The AWH912 features the innovative ZEN Motor, which is directly attached to the drum without the traditional belt, delivering outstanding cleaning results while minimising noise and vibrations. Thanks to the direct rotation, the set of movements determined by the load and selected programme are more precise, meaning optimised energy efficiency.



Tailored for **light to medium-duty** commercial use, the AWH912-PRO serves as the perfect solution for a wide range of small businesses:

**Hotels, B&B's, Camp Sites, Holiday Parks, Sports & Fitness Clubs, Restaurants, Cafés, Salons, & Student Halls.**

Main Features	
GTIN number	4011577868449
Load capacity	9kg
Drum volume	64 Litres
Maximum spin speed	1200 RPM
Programmes	24
Exterior finish	White
Drum material/type	Stainless Steel
User interface	LCD
Panel language	Symbol / English
Water supply	Cold fill only
Draining system	Drain pump
Plug type	UK 13 amp plug
Water protection system	Full aquastop + 1 Eltek
Tested operating hours	5,000 hours
Stacking kit	C00378975 (Optional)

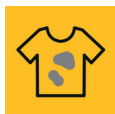
Technical & Performance Features	
Gross & nett weight	81.5kg / 80kg
Product dimensions (mm)	W600 x D640 x H850
Packed dimensions (mm)	W677 x D699 x H878
Wattage	1700W
Voltage/Frequency	220-240V / 50 Hz
Energy usage at full load	0.567 kWh per cycle
Water usage at full load	46 Litres per cycle
Wash duration at full load	3:45 hours per cycle
Residual moisture	53%
Wash & spin noise levels	48 dBA / 71 dBA
Noise class	A
Energy rating	B
Spin drying efficiency class	B
Type of motor	Direct drive
Heating type	Electric



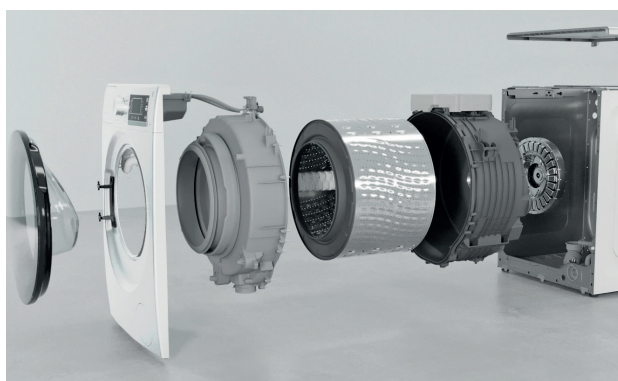
**Steam Hygiene:** Forget bacteria. Pure, perfect cleaning becomes effortless. When Steam Hygiene is activated, laundry is sanitised by a hot steam flow at the end of the cycle. For 30 minutes, air heated to 70°C/80°C fills the drum, neutralising up to 99.9% of bacteria in a powerful and natural way. This process ensures thorough cleaning without the use of any chemicals, providing peace of mind and pristine laundry.



**Fresh Care+:** Once the cycle is over, a steam flow is released inside the drum, gently massaging the load with several slow bidirectional oscillations. These combined actions keep clothes fresh inside the washer for up to 6 hours after the end of the cycle, preventing the proliferation of the main odour sources. This ensures your laundry stays fresh and clean, even if you can't remove it right away, providing added convenience and peace of mind.



**Anti Stain Cycle:** This exclusive professional programme, available through the 'More Cycles' option, is capable of removing more than 100 stains in just one hour. It is the perfect washing programme for businesses with a rapid turnover of tablecloths and towels that need to be washed quickly and effectively. This feature ensures high efficiency and cleanliness, meeting the demands of fast-paced commercial environments.



Download our Marketing pack  
for the **AWH912-PRO-BAUK!**



- Spec Sheet
- User Manual
- Product CSV
- Imagery
- Logos & Icons