



Instruction Manual

Dough Rollers



DR12
DR16

Introduction

Thank you for purchasing a Pantheon Catering Equipment product. In this booklet you will find instructions for safe operation so please read carefully and retain for future reference.

Warnings and Precautions

The following warnings and precautions are important and must be observed:

- Make sure the machine is operated in dry conditions
- Make sure the machine is installed on a flat firm surface.
- Ensure clothing or hair isn't likely to get caught in the machine, thus wear adequate clothing and keep hair tied back
- Be sure to follow the *checks before use* in the operating instructions part of this manual.
- Ensure to clean the machine after every use, to ensure the machine operates efficiently and correctly.
- Ensure to take caution of the rollers whilst the machine is in operation

Technical Data

Specifications:

Model	DR12	DR16
Voltage	230	230
Power (W)	370	370
Dough Weight (g)	50-500	50-500
Pizza Diameter (cm)	10-30	10-40
Weight (Kg)	37	39
Dimensions (mm)	530w x 480d x 560h	530w x 530d x 650h

Specifications are subject to change. Please check the rating label on the back of the machine.



Operating Instructions

Checks before use

- Allow the machine to run for roughly one minute without loading produce, to ensure it is functioning correctly.
- Make sure to machine is on a dry surface.
- Ensure any components which will be in contact with dough are clean, to ensure hygiene standards are maintained.

Shaping the Dough

Round Discs:

- After placing the dough into the machine and letting it run through both rollers, simply turn it 90° rapidly by hand, to send it back through the lower rollers
- After following this method, the dough will be in a disc shape, however to create the perfect disc, it may need finishing by hand.

Other Shapes:

- It is also possible to shape the dough into rectangles, squares, stars etc
- Prior to rolling the dough, cut it to the approximate shape you would like.
- Then follow the same method as creating round discs, stated above.

Regulate Thickness

- Firstly ensure the machine is turned off.
- Then to change the width between the highest rollers, on the right hand side of the roller, first pull out the black knob in order to release the lever.
- Then turn the lever CLOCKWISE to REDUCE thickness, or turn it ANTICLOCKWISE to INCREASE thickness.
- When desired thickness is selected simply push the black knob back in, to secure the lever in position.

Maintenance

Cleaning

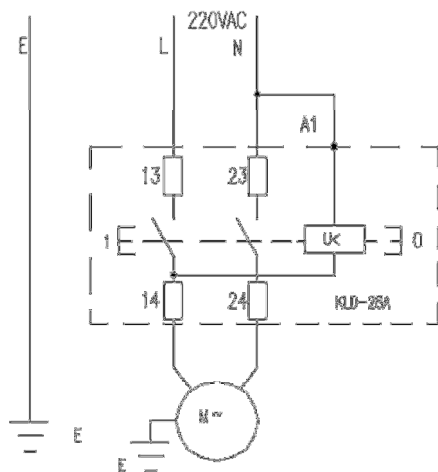
Firstly ensure the machine is switched off and unplugged prior to cleaning. Using a proper brush, first clean the residue of flour and dough from all components of the machine.

Then open the rollers to maximum opening spacing. It is then possible to easily clean each of the components using a damp sponge or cloth.

Troubleshooting

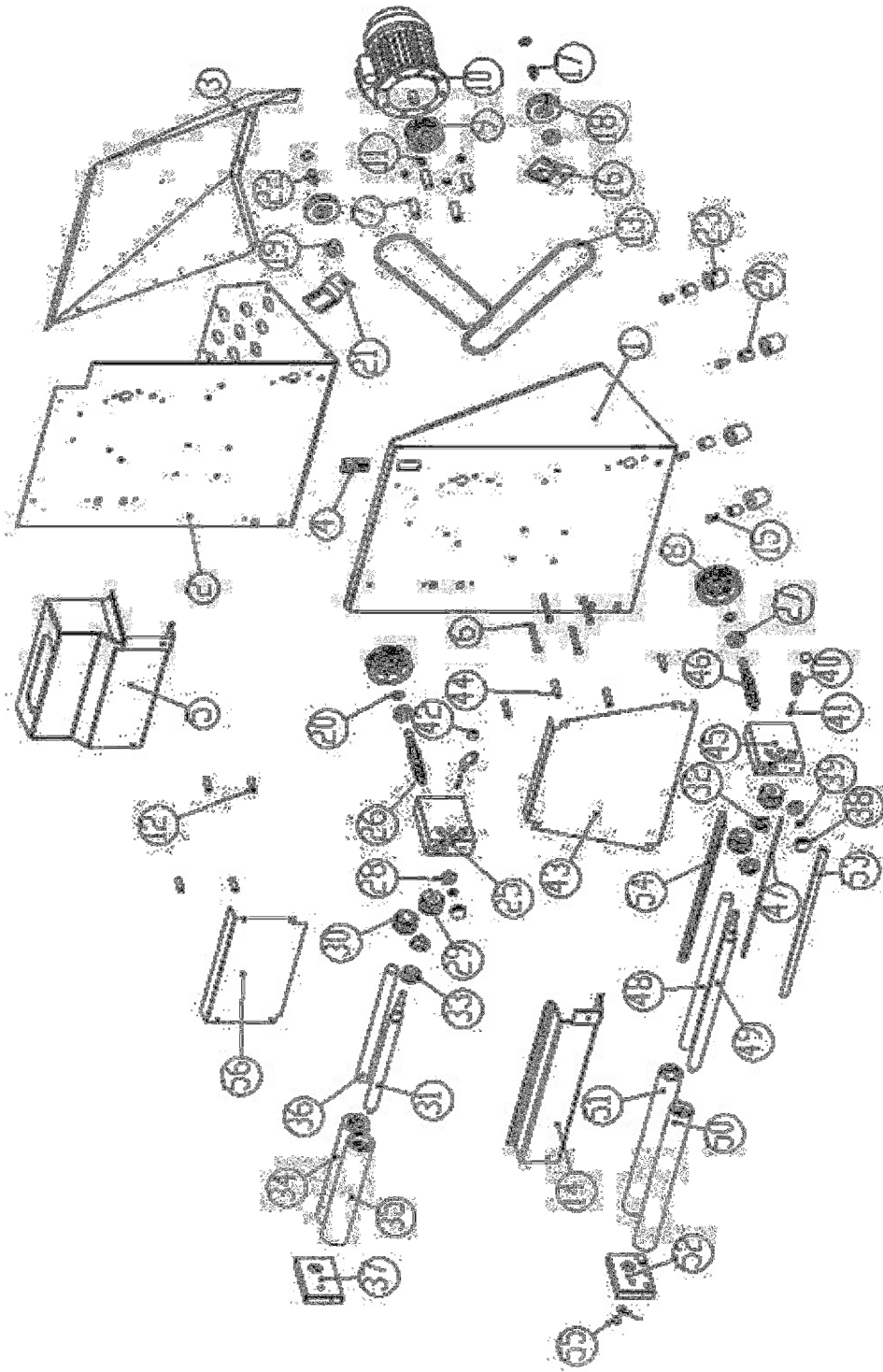
Problem	Possible Cause	Solution
The machine doesn't start	<ul style="list-style-type: none"> • Fuse may have blown • Incorrect input voltage • Plug not correctly seated. 	<ul style="list-style-type: none"> • Check the fuse, change if necessary • Check input voltage • Ensure plug is securely in the plug socket
The machine is conducting electricity, or sometimes shocks the user.	<ul style="list-style-type: none"> • The machine isn't correctly earthed or there are loose wires. 	<ul style="list-style-type: none"> • Check the wires and ensure they aren't in contact with the structure of the machine.
Only a single roller is working correctly	<ul style="list-style-type: none"> • The belt has snapped • The worm wheel has worn 	<ul style="list-style-type: none"> • Replace the belt • Replace the worm wheel

Circuit Diagram



Parts List

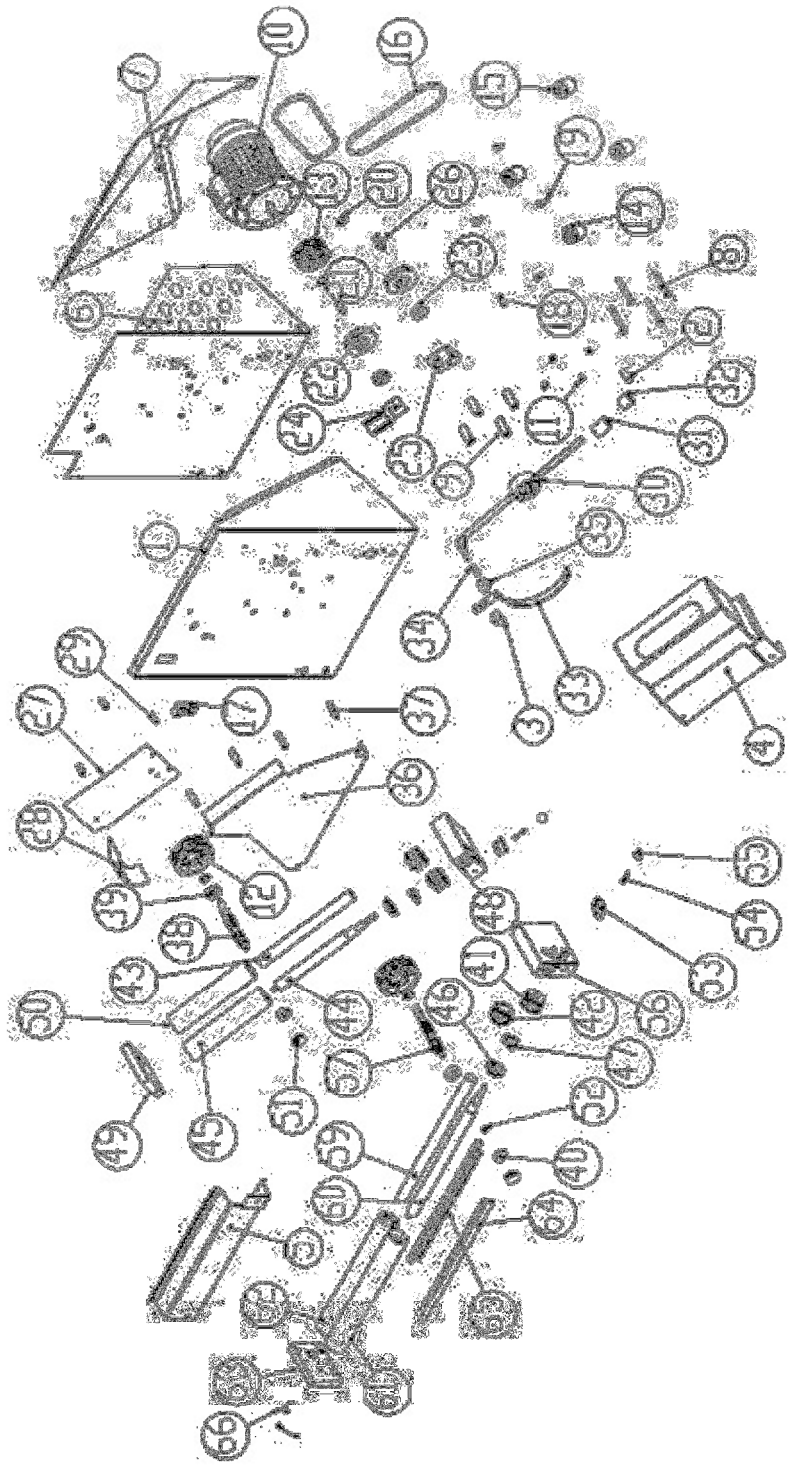
DR12



Item	Description	Code	Qty
1	Body	02-10-038	1
2	Board	02-10-036	1
3	Back cover	02-10-037	1
4	Switch	02-10-047	1
5	Up cover	02-10-033	1
6	Screw	02-10-048	4
7	Supporting Tube	02-10-020	4
8	Belt Wheel-B	02-10-010	2
9	Belt Wheel-A	02-10-011	1
10	Motor	02-10-049	1
11	Nut	02-10-050	4
12	Supporter Bar-B	20-10-019	4
13	belt	02-10-046	2
14	Low cover	02-10-032	1
15	Screw	02-10-051	8
16	Fix block B	02-10-043	1
17	Locating Shaft B	02-10-044	1
18	Tension Wheel	02-10-040	2
19	Bearing	02-10-052	2
20	Ring	02-10-053	4
21	Fix block A	02-10-041	1
22	Locating Shaft A	02-10-042	1
23	Rubber foot	02-10-045	4
24	Rubber bar	02-10-039	4
25	Supporter-B	02-10-026	1
26	Worm-A	02-10-001	1
27	Axletree-A	02-10-054	2
28	Axletree-B	02-10-055	2

Item	Description	Code	Qty
29	Worm Wheel-A	02-10-003	2
30	Worm Wheel-B	02-10-004	2
31	Eccentyic axle-A	02-10-009	1
32	Transit Ring	02-10-022	2
33	Transit Ring	02-10-023	2
34	Roller-B	02-10-016	1
35	Roller-D	02-10-017	1
36	Roller shaft-B	02-10-007	1
37	Supporter-A	02-10-025	1
38	Cover	02-10-024	2
39	Ring	02-10-056	2
40	Ball handle	02-10-030	2
41	bar	02-10-021	2
42	Ball handle	02-10-012	2
43	Lower plate	02-10-035	1
44	Supporter Bar-A	02-10-018	4
45	Supporter-C	02-10-027	1
46	Worm-B	02-10-002	1
47	Supporting Axle	02-10-005	1
48	Roller Shaft-A	02-10-006	1
49	Eccentyic axle-B	02-10-008	1
50	Roller-C	02-10-015	1
51	Roller-A	02-10-029	1
52	Supporter-D	02-10-028	1
53	Scraper-A	02-10-013	1
54	Scraper-B	02-10-014	1
55	Spring	02-10-031	2
56	Upper Plate	02-10-034	1

DR16



Item	Description	Code	Qty
1	Body	02-20-040	1
2	Inner Axle	02-20-048	1
3	Flange	02-20-041	1
4	Up cover	02-20-033	1
5	Lower Cover	02-20-032	1
6	Board	02-20-037	1
7	Back Cover	02-20-039	1
8	Screw	02-20-060	4
9	Supporting tube	02-20-020	4
10	Motor	02-20-061	1
11	Nut	02-20-062	4
12	Belt wheel-B	02-20-010	2
13	Belt wheel-A	02-20-011	1
14	Rubber Foot	02-20-057	4
15	Rubber Bar	02-20-050	4
16	Belt	02-20-058	2
17	Switch	02-20-059	1
18	Lever Supporter	02-20-038	1
19	Screw	02-20-063	8
20	Ring	02-20-064	4
21	Locating Shaft B	02-20-055	1
22	Tension Wheel	02-20-051	2
23	Bearing	02-20-065	2
24	Fix block B	02-20-054	1
25	Fix block A	02-20-052	1
26	Locating Shaft A	02-20-053	1
27	Upper plate	02-20-034	1
28	Upper side plate	02-20-036	1
29	Supporter Bar-A	02-20-018	3
30	Lever	02-20-044	1
31	Flange-A	02-20-042	1
32	Flange-B	02-20-043	1
33	Hook	02-20-045	1

Item	Description	Code	Qty
34	Hook Assembly B	02-20-046	1
35	Hook Assembly C	02-20-047	1
36	Lower plate	02-20-035	1
37	Supporter bar-B	20-20-019	4
38	Worm-A	02-20-001	1
39	Bearing-A	02-20-066	2
40	Bearing-B	02-20-067	2
41	Worm wheel-A	02-20-003	2
42	Worm wheel-B	02-20-004	2
43	Roller-B	02-20-007	1
44	Eccentyic axle-A	02-20-009	1
45	Roller-D	02-20-017	1
46	Transit Ring	02-20-023	2
47	Transit Ring	02-20-022	2
48	Supporter-B	02-20-026	1
49	Supporter-A	02-20-025	1
50	Roller-B	02-20-016	1
51	Cover	02-20-024	2
52	Ring	02-20-068	2
53	Graducation	02-20-030	2
54	Spring	02-20-021	2
55	Ball handle	02-20-012	2
56	Supporter-C	02-20-027	1
57	Worm-B	02-20-002	1
58	Supporting axle	02-20-005	1
59	Roller Shaft-A	02-20-006	1
60	Eccentyic axle-B	02-20-008	1
61	Roller-C	02-20-015	1
62	Roller-A	02-20-029	1
63	Supporter-D	02-20-028	1
64	Scraper-A	02-20-013	1
65	Scraper-B	02-20-014	1
66	Spring	02-20-031	2