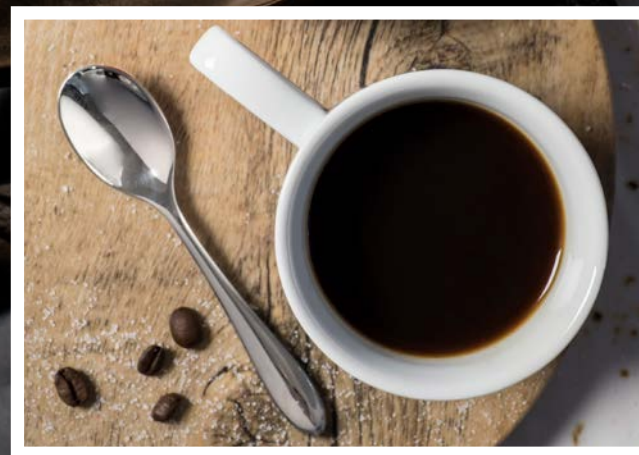
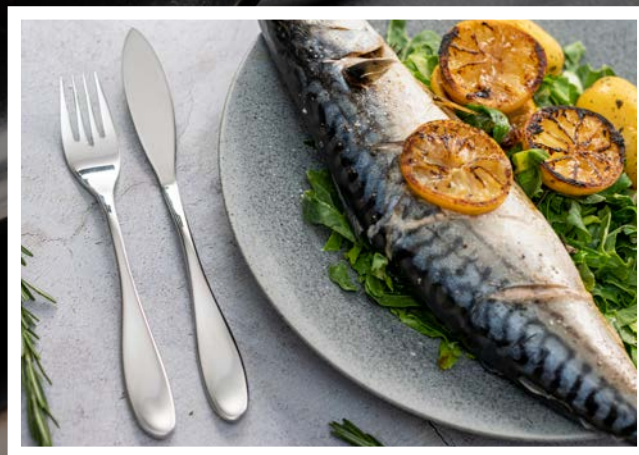


twentyeight

γ δ ε θ ω φ λ ς



Introducing the **twentyeight** collection

Designed for dining

Twentyeight – a collection of beautiful 18/10 stainless steel cutlery ranges designed specifically for the discerning diner.

Born from a desire to create an exclusive range of completely new cutlery shapes, each one has been styled to enhance any dining experience.

Traditional or modern, classic shape or hybrid shape, delicacy or drama - something to suit every style.

Twentyeight has been designed for dining

γ δ ε θ ω φ λ ς

gamma

DESIGN CONCEPT - GAMMA (WAVE)



Inspired by the rounded curve of the mathematic sine wave. The pieces sit beautifully in the hand and bring a real sense of theatre to the table.



01



02



03



07



08



11



12



13



04



05



06



09



10



14



15

- 01 **AB927** Gamma Table Fork
- 02 **AB926** Gamma Table Knife
- 03 **AB928** Gamma Table Spoon
- 04 **AB931** Gamma Dessert Fork
- 05 **AB930** Gamma Dessert Knife
- 06 **AB932** Gamma Dessert Spoon

- 07 **AD676** Gamma Steak Fork
- 08 **AB933** Gamma Steak Knife
- 09 **AB935** Gamma Fish Fork
- 10 **AB934** Gamma Fish Knife

- 11 **AB936** Gamma Soup Spoon
- 12 **AB929** Gamma Tea Spoon
- 13 **AD663** Gamma Coffee Spoon
- 14 **AD677** Gamma Cake Fork
- 15 **AD678** Gamma Butter Knife



gamma



16



17



18



19



20



21



22



23



24



25



26

Utensils

- 16 **AD671** Gamma Serving Fork
- 17 **AD672** Gamma Serving Spoon
- 18 **AD673** Gamma Gravy Ladle
- 19 **AD674** Gamma Cake Server
- 20 **AD675** Gamma Soup Ladle

Stonewash

- 21 **AD667** Gamma Tea Spoon Black
- 22 **AD668** Gamma Tea Spoon Rose
- 23 **AD669** Gamma Coffee Spoon Black
- 24 **AD670** Gamma Coffee Spoon Rose
- 25 **AD722** Gamma Dessert Spoon Black
- 26 **AD723** Gamma Dessert Spoon Rose



delta



DESIGN CONCEPT - DELTA (MINIMALIST)

An exceptionally simple, minimalist design. Smooth rounded lines compliment a minimalist table presentation. Delta is the epitome of 'less is more'.



01



02



03



07



10



11



04



05



06



08



09



12



13

01 **AB950** Delta Table Fork

02 **AB949** Delta Table Knife

03 **AB951** Delta Table Spoon

04 **AB954** Delta Dessert Fork

05 **AB953** Delta Dessert Knife

06 **AB955** Delta Dessert Spoon

07 **AB956** Delta Steak Knife

08 **AB958** Delta Fish Fork

09 **AB957** Delta Fish Knife

10 **AB960** Delta Soup Spoon

11 **AB952** Delta Tea Spoon

12 **AB959** Delta Ice Tea Spoon

13 **AD666** Delta Coffee Spoon



epsilon

ε

DESIGN CONCEPT - EPSILON (COMFORT)

A classic, solid, teardrop shape designed to deliver maximum comfort with the smooth rounded curves of the handles and the narrow neck.



01 02 03



07



10



11



04 05 06



08



09



12



13

- 01 **AB962** Epsilon Table Fork
- 02 **AB961** Epsilon Table Knife
- 03 **AB963** Epsilon Table Spoon
- 04 **AB966** Epsilon Dessert Fork
- 05 **AB965** Epsilon Dessert Knife
- 06 **AB967** Epsilon Dessert Spoon

- 07 **AB968** Epsilon Steak Knife
- 08 **AB970** Epsilon Fish Fork
- 09 **AB969** Epsilon Fish Knife

- 10 **AB972** Epsilon Soup Spoon
- 11 **AB964** Epsilon Tea Spoon
- 12 **AB971** Epsilon Ice Tea Spoon
- 13 **AD664** Epsilon Coffee Spoon



theta



DESIGN CONCEPT - THETA (HYBRID)

A hybrid combination of smooth curves and flat surfaces. A key element of the design is the knife handle - turned through 90° allowing it to curve down to a beautifully slim tapered neck



01



02



03



07



10



11



04



05



06



08



09



12

01 **AB938** Theta Table Fork

02 **AB937** Theta Table Knife

03 **AB939** Theta Table Spoon

04 **AB942** Theta Dessert Fork

05 **AB941** Theta Dessert Knife

06 **AB943** Theta Dessert Spoon

07 **AB945** Theta Steak Knife

08 **AB947** Theta Fish Fork

09 **AB946** Theta Fish Knife

10 **AB944** Theta Soup Spoon

11 **AB940** Theta Tea Spoon

12 **AB948** Theta Ice Tea Spoon



omega



DESIGN CONCEPT - OMEGA (TRADITIONAL)

Designed for the traditional dining experience. Taking inspiration from the 18th Century classic "Bead" pattern but using clean, simple lines to bring a subtle hint of the modern to a traditional table setting.



01



02



03



07



10



11



04



05



06



08



09



12



13

- 01 **AB915** Omega Table Fork
- 02 **AB914** Omega Table Knife
- 03 **AB916** Omega Table Spoon
- 04 **AB919** Omega Dessert Fork
- 05 **AB918** Omega Dessert Knife
- 06 **AB920** Omega Dessert Spoon

- 07 **AB922** Omega Steak Knife
- 08 **AB924** Omega Fish Fork
- 09 **AB923** Omega Fish Knife

- 10 **AB921** Omega Soup Spoon
- 11 **AB917** Omega Tea Spoon
- 12 **AB925** Omega Ice Tea Spoon
- 13 **AD665** Omega Coffee Spoon

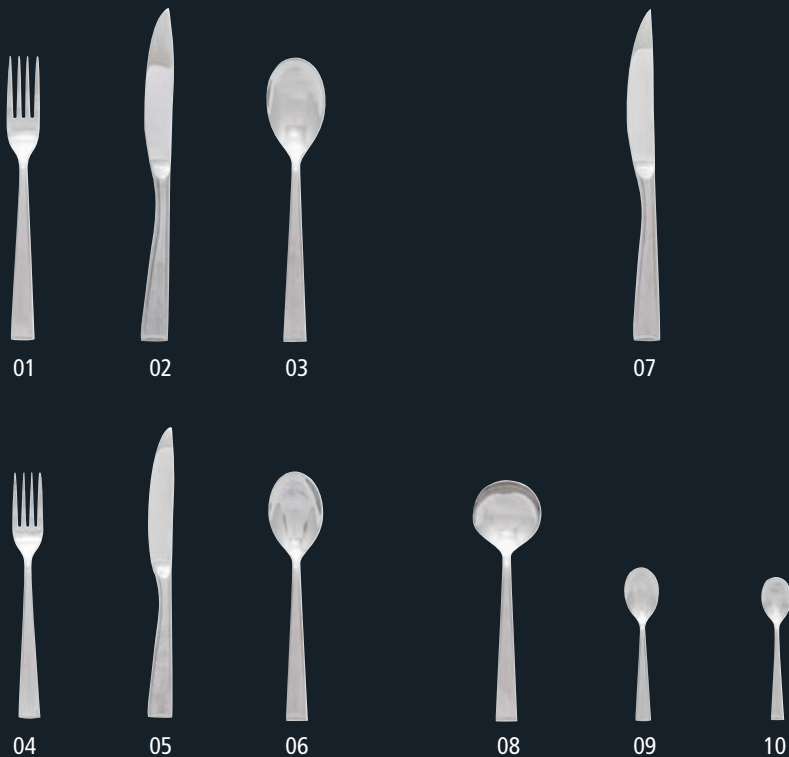


phi



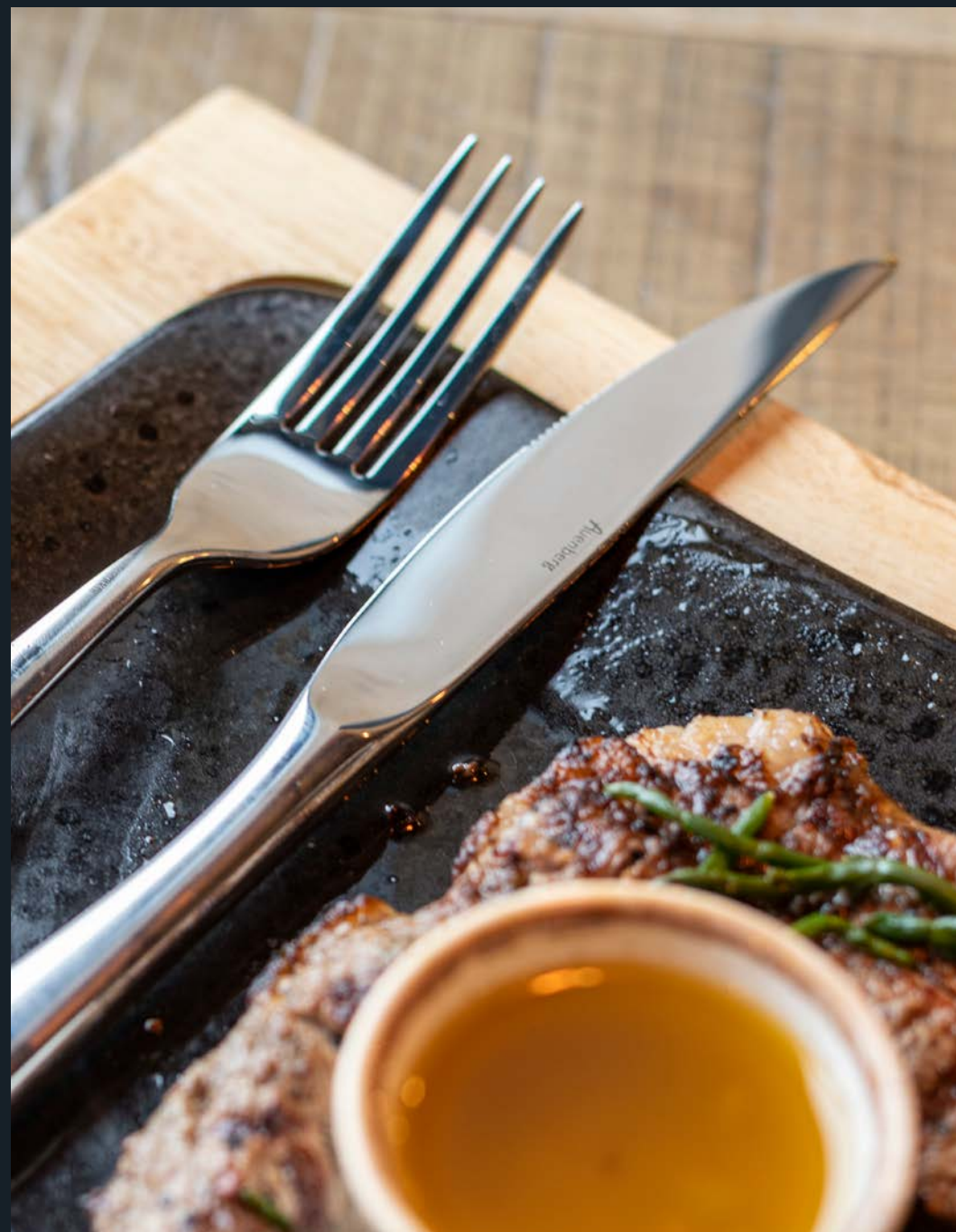
DESIGN CONCEPT - PHI

Dynamic and angular to create a premium and modern aesthetic. Symmetrical tapering from the sloped handle to the slim neck of each individual piece provides a highly stylised collection.



- 01 AE142 Phi Table Fork
- 02 AE141 Phi Table Knife
- 03 AE143 Phi Table Spoon
- 04 AE145 Phi Dessert Fork
- 05 AE144 Phi Dessert Knife
- 06 AE146 Phi Dessert Spoon

- 07 AE150 Phi Steak Knife
- 08 AE147 Phi Soup Spoon
- 09 AE148 Phi Tea Spoon
- 10 AE149 Phi Coffee Spoon



lambda



DESIGN CONCEPT - LAMBDA

Clean, straight lines for a modern, minimalist approach creating a fresh but simple look to the table.



01



02



03



07



04



05



06



08



09



10

- 01 **AE152** Lambda Table Fork
- 02 **AE151** Lambda Table Knife
- 03 **AE153** Lambda Table Spoon
- 04 **AE155** Lambda Dessert Fork
- 05 **AE154** Lambda Dessert Knife
- 06 **AE156** Lambda Dessert Spoon

- 07 **AE160** Lambda Steak Knife
- 08 **AE157** Lambda Soup Spoon
- 09 **AE158** Lambda Tea Spoon
- 10 **AE159** Lambda Coffee Spoon



sigma



DESIGN CONCEPT - SIGMA

A lightweight, smooth, classic shape to offer superb comfort at the table.



01 **AE162** Sigma Table Fork

02 **AE161** Sigma Table Knife

03 **AE163** Sigma Table Spoon

04 **AE165** Sigma Dessert Fork

05 **AE164** Sigma Dessert Knife

06 **AE166** Sigma Dessert Spoon

07 **AE170** Sigma Steak Knife

08 **AE167** Sigma Soup Spoon

09 **AE168** Sigma Tea Spoon

10 **AE169** Sigma Coffee Spoon



twentyeight

Twentyeight is designed and distributed exclusively by Bunzl Lockhart Catering Equipment.

For more information call 03701 678678 or visit lockhart.co.uk

Head Office: Bunzl Lockhart Catering Equipment, Lockhart House, Brunel Road, Theale, Berkshire, RG7 4XE.

Terms & Conditions: All prices are strictly nett and excluding VAT. All specifications and prices detailed are correct at the time of going to press, errors and omissions excepted, but are subject to alteration by us without prior notice. A copy of our full terms & conditions is available on request.