

ECR	Rev.	Comment	Date	By
	A	Production Release	15/12/2017	AB



Classeq Ltd, Classeq House, Beacon Business Park, Beacon Way, Stafford, ST18 0DG, United Kingdom

This drawing and information or descriptive matter set out hereon are the confidential and copyright property of CLASSEQ and must not be disclosed, loaned, copied or used for manufacturing, tendering or any other purpose without permission from Classeq.

General Notes  
Schematic Layout

Description	Drawing No.	Harness Required
P500 Standard WS Wiring Diagram	30013364	30013263, 30013264

Drawn	Date	Approved	Date	Rev.	Sheet
A. BRAZIER	15/12/2017	D. HUTTON	15/12/2017	A	1 of 1

# CLASSEQ

## 30013364

P500 Standard + WS Wiring Diagram

*P500*

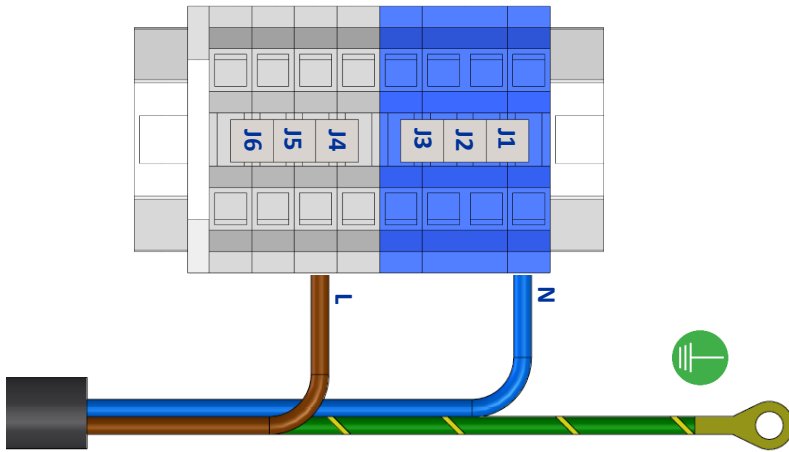
*P500-A*

*P500-A-WS*

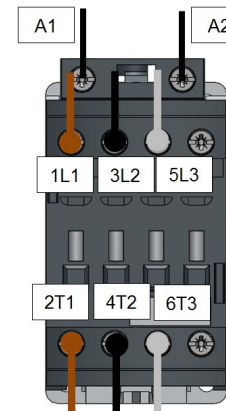
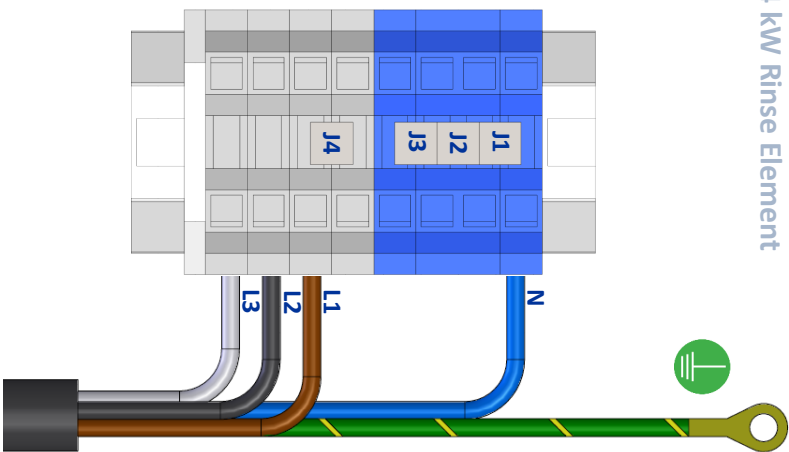
*A - Air Break*

*WS - Water Softener*

**1 Phase + Neutral (30A per Phase)**  
6 kW Rinse Element

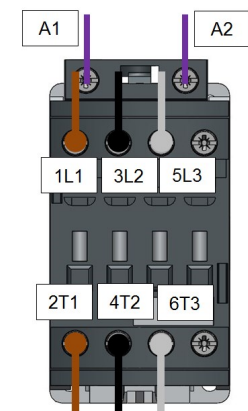


**3 Phase + Neutral (Up to 16A per Phase)**  
6 kW Rinse Element  
8.64 kW Rinse Element



WASH CONTACTOR

COIL	A1 & A2 (Black) – From Control unit Output No 6
INPUT	1L1 (Brown), 3L2 (Black) & 5L3 (Grey) – From Terminal Block
OUTPUT	2T1 (Brown), 4T2 (Black) & 6T3 (Grey) – To WASH ELEMENT



RINSE CONTACTOR

COIL	A1 & A2 (Black) – From Control unit Output No 7
INPUT	1L1 (Brown), 3L2 (Black) & 5L3 (Grey) – From Terminal Block
OUTPUT	2T1 (Brown), 4T2 (Black) & 6T3 (Grey) – To RINSE ELEMENT