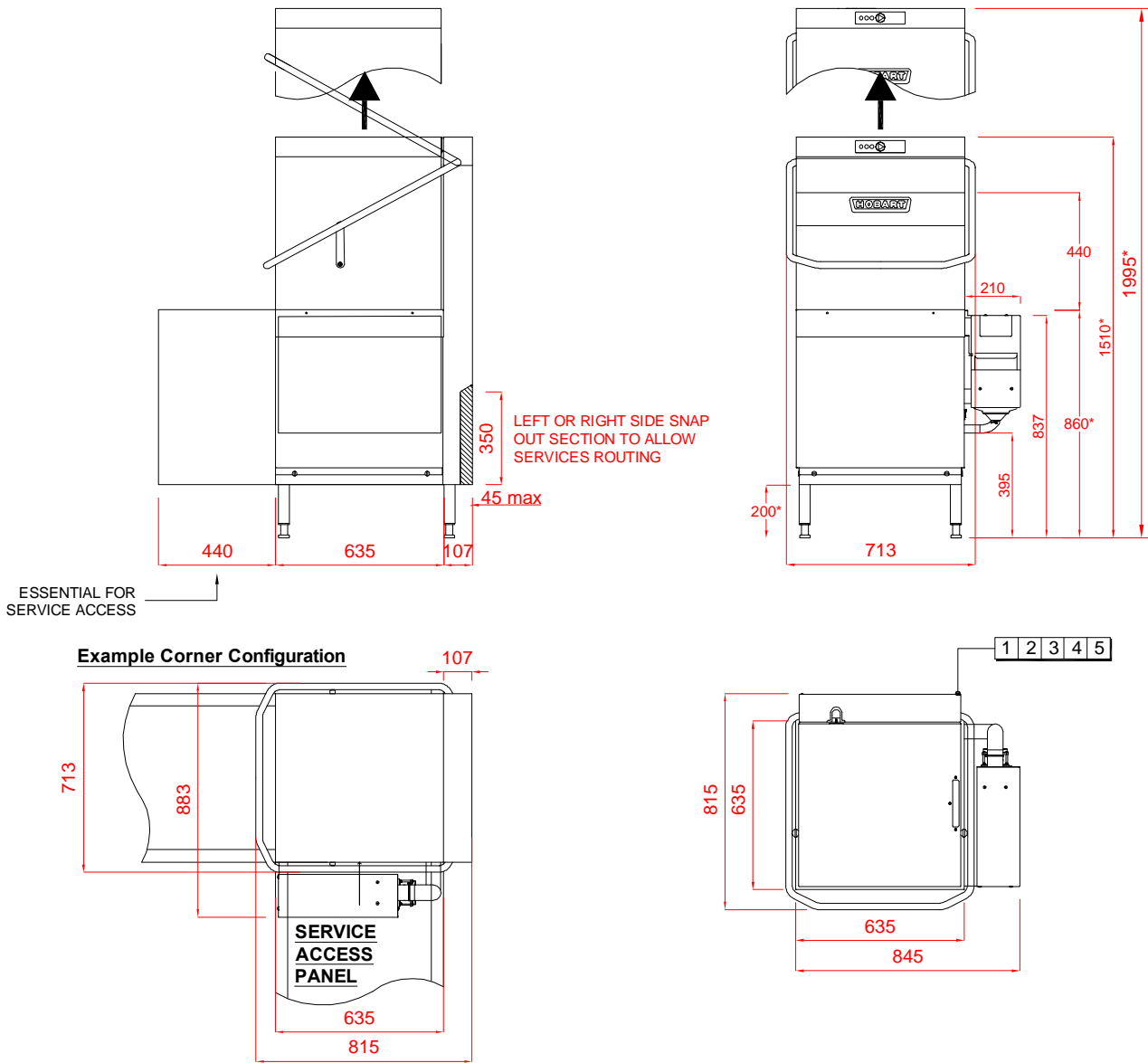


Hood Type Dishwasher with Inbuilt Softener and Automatic Soil Removal

AUPS-10A



<p>1 Water</p> <p>22mm CONNECTION VIA 2 METRE FLEXIBLE HOSE, FEMALE TERMINATION.</p> <p>COLD WATER SUPPLY 10°C @ 0.4 TO 10 BAR MAX.</p> <p>OR</p> <p>HOT WATER SUPPLY 60°C @ 0.4 TO 10 BAR MAX.</p> <p>INITIAL TANK FILL 40 LITRES.</p> <p>RINSE WATER USAGE (ECO) 1.4 LITRES PER CYCLE.</p> <p>RINSE WATER USAGE 2.0 LITRES PER CYCLE. MAX USAGE 150 LITRES PER HOUR.</p> <p>OUR MACHINES ARE SUPPLIED WITH CLASS 'AA' AIR GAP AS STANDARD.</p>	<p>2 Drain</p> <p>DRAIN - 2 METRE FLEXIBLE HOSE TO A 40 m.m. TRAPPED STANDPIPE 500mm A.F.F.L.</p> <p>FLOW RATE 30 LITRES PER MINUTE. DRAIN TIME TYPICALLY 3 MINUTES.</p>	<p>3 Electric Loading</p> <p>17.5kW 400/50/3 + N + E FUSED AT 35AMPS / PHASE.</p> <p>CONFIGURABLE TO:</p> <p>11.3kW 400/50/3 + N + E FUSED AT 25AMPS / PHASE.</p> <p>SUPPLIED WITH 2.5 METRES OF CABLE.</p>
	<p>4 Other Services</p> <p>RINSE AGENT HOSE - 2.0 METRE FLEXIBLE.</p> <p>DETERGENT HOSE - 2.0 METRE FLEXIBLE.</p>	<p>Notes</p> <p>APPROX WEIGHTS: EMPTY: 140kg's WITH WATER: 191kg's</p> <p>HEIGHTS MARKED * REPRESENT ±20mm</p> <p>MIN DISTANCE FROM WALL TO INSIDE OF TABLING BOXED EDGE 154.5mm</p> <p>AUTOMATIC SOIL REMOVAL UNIT CAN BE POSITIONED ON EITHER SIDE.</p>