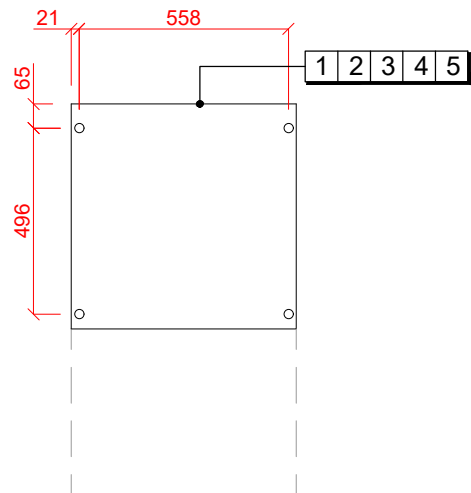
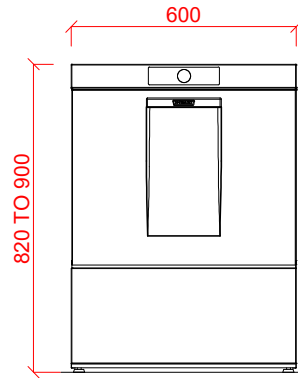
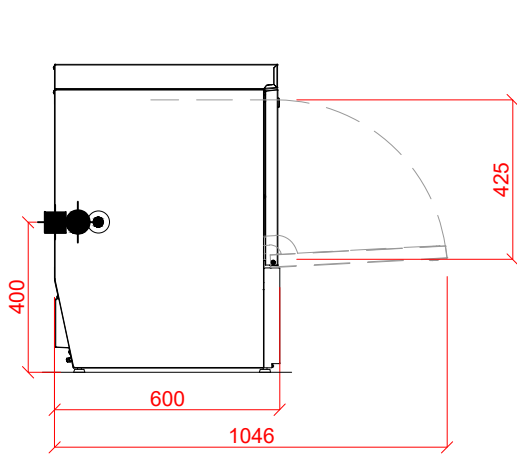


Undercounter Dishwasher

CARE-10A



1 Water
22mm CONNECTION VIA 2 METRE FLEXIBLE HOSE, FEMALE TERMINATION. WATER SUPPLY 10°C TO 60°C (3.75 CLARK MAX) @ 0.6 TO 6.0 BAR MAX. INITIAL TANK FILL 10.6 LITRES. RINSE WATER USAGE 3.5 - 16 LITRES PER CYCLE. OUR MACHINES ARE SUPPLIED WITH CLASS 'AA' AIR GAP AS STANDARD.

2 Drain
DRAIN - 2 METRE FLEXIBLE HOSE TO A 40 mm TRAPPED STANDPIPE 800mm MAX A.F.F.L. FLOW RATE 30 LITRES PER MINUTE.

3 Electric Loading
7.7kW 400/50/3 + N + E FUSED AT 16AMPS / PHASE. MACHINE SUPPLIED WITH 2.0 METRES OF CABLE.

4 5 Other Services
RINSE AGENT HOSE - 2.5 METRE FLEXIBLE. DETERGENT HOSE - 2.5 METRE FLEXIBLE.

Notes
APPROX WEIGHTS: EMPTY: 65kg's WITH WATER: 87kg's